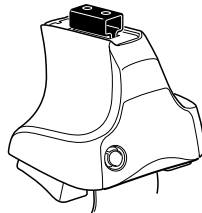


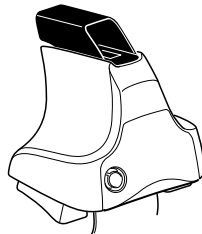
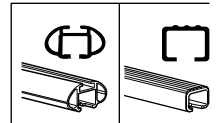
Kit 1520

- DODGE Ram 1500**, 2-dr Single Cab, 09–
- DODGE Ram 1500**, 4-dr Crew Cab, 09–
- DODGE Ram 1500**, 4-dr Double Cab, 09–
- DODGE Ram 2500 / 3500**, 2-dr Standard Cab, *09–
- DODGE Ram 2500 / 3500**, 4-dr Crew Cab, *09–
- DODGE Ram 2500 / 3500**, 4-dr Mega Cab, *09–
- DODGE Ram 2500 / 3500**, 4-dr Quad Cab, *09–

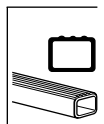
*North America



754 Rapid System
480R Rapid Traverse (North America)



480 Traverse (North America)



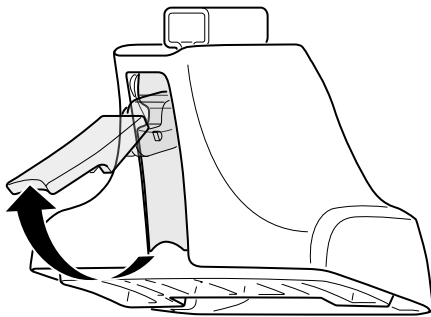
754 Rapid System
 480R Rapid Traverse (North America)

754 Rapid System
 480R Rapid Traverse (North America)

480 Traverse (North America)

(North America)

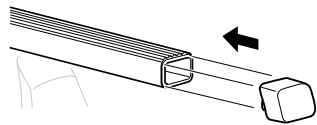
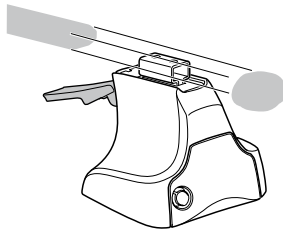
1



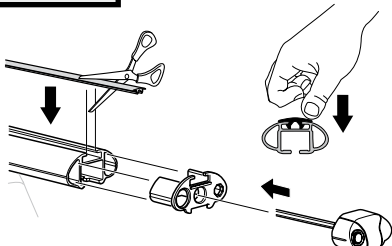
2



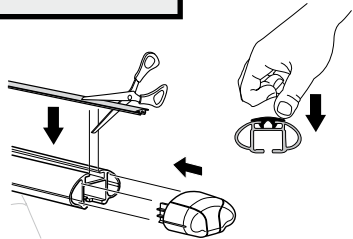
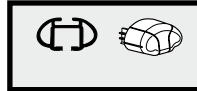
754 Rapid System
480R Rapid Traverse
(North America)



x4



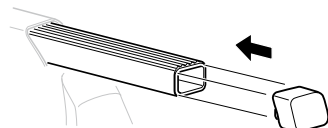
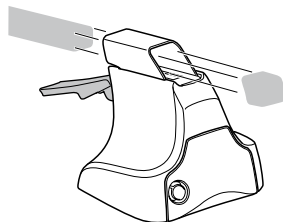
x4



x4



480 Traverse
(North America)

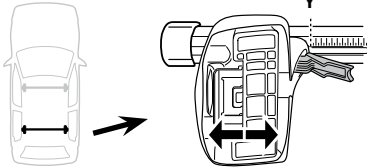
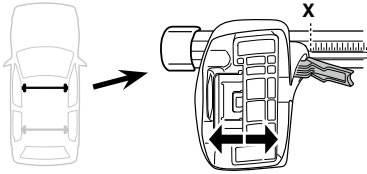


x4

3



754 Rapid System



	X
DODGE Ram 1500, 2-dr Single Cab, 09-	64,5
DODGE Ram 1500, 4-dr Crew Cab, 09-	64,5
DODGE Ram 1500, 4-dr Double Cab, 09-	64,5
DODGE Ram 2500 / 3500, 2-dr Standard Cab, *09-	64,5
DODGE Ram 2500 / 3500, 4-dr Crew Cab, *09-	64,5
DODGE Ram 2500 / 3500, 4-dr Mega Cab, *09-	64,5
DODGE Ram 2500 / 3500, 4-dr Quad Cab, *09-	64,5

	Y
DODGE Ram 1500, 2-dr Single Cab, 09-	64,5
DODGE Ram 1500, 4-dr Crew Cab, 09-	63,5
DODGE Ram 1500, 4-dr Double Cab, 09-	63,5
DODGE Ram 2500 / 3500, 2-dr Standard Cab, *09-	64,5
DODGE Ram 2500 / 3500, 4-dr Crew Cab, *09-	63,5
DODGE Ram 2500 / 3500, 4-dr Mega Cab, *09-	63,5
DODGE Ram 2500 / 3500, 4-dr Quad Cab, *09-	63,5

3



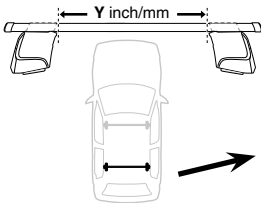
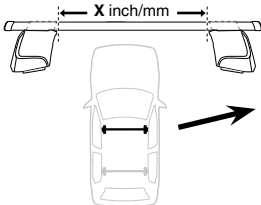
480R Rapid Traverse



480 Traverse



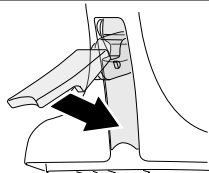
(North America)

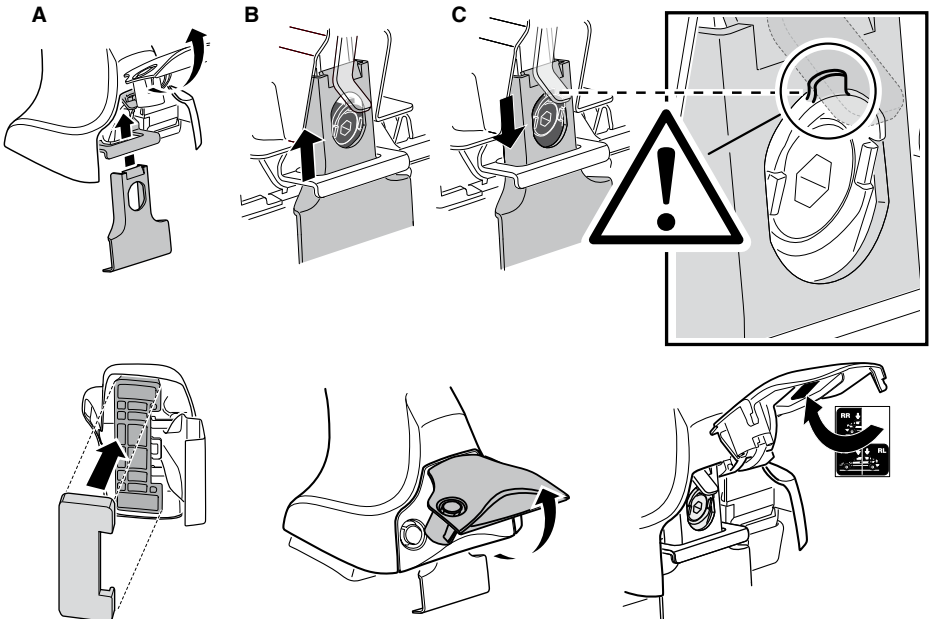
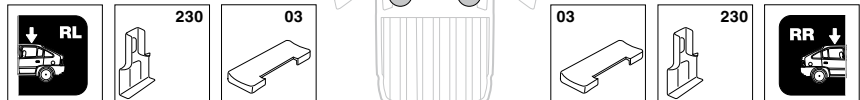


	X inch	X mm
DODGE Ram 1500, 2-dr Single Cab, 09-	51 "	1295 mm
DODGE Ram 1500, 4-dr Crew Cab, 09-	51 "	1295 mm
DODGE Ram 1500, 4-dr Double Cab, 09-	51 "	1295 mm
DODGE Ram 2500 / 3500, 2-dr Standard Cab, *09-	51 "	1295 mm
DODGE Ram 2500 / 3500, 4-dr Crew Cab, *09-	51 "	1295 mm
DODGE Ram 2500 / 3500, 4-dr Mega Cab, *09-	51 "	1295 mm
DODGE Ram 2500 / 3500, 4-dr Quad Cab, *09-	51 "	1295 mm

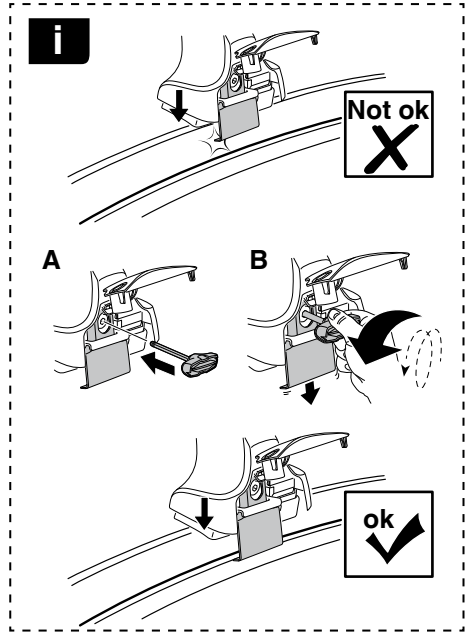
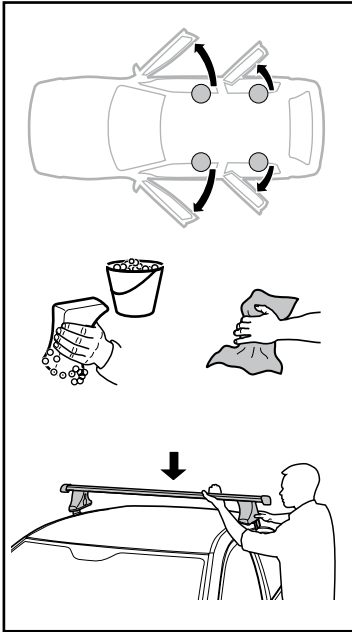
	Y inch	Y mm
DODGE Ram 1500, 2-dr Single Cab, 09-	51 "	1295 mm
DODGE Ram 1500, 4-dr Crew Cab, 09-	50 ⁵ / ₈ "	1285 mm
DODGE Ram 1500, 4-dr Double Cab, 09-	50 ⁵ / ₈ "	1285 mm
DODGE Ram 2500 / 3500, 2-dr Standard Cab, *09-	51 "	1295 mm
DODGE Ram 2500 / 3500, 4-dr Crew Cab, *09-	50 ⁵ / ₈ "	1285 mm
DODGE Ram 2500 / 3500, 4-dr Mega Cab, *09-	50 ⁵ / ₈ "	1285 mm
DODGE Ram 2500 / 3500, 4-dr Quad Cab, *09-	50 ⁵ / ₈ "	1285 mm

4

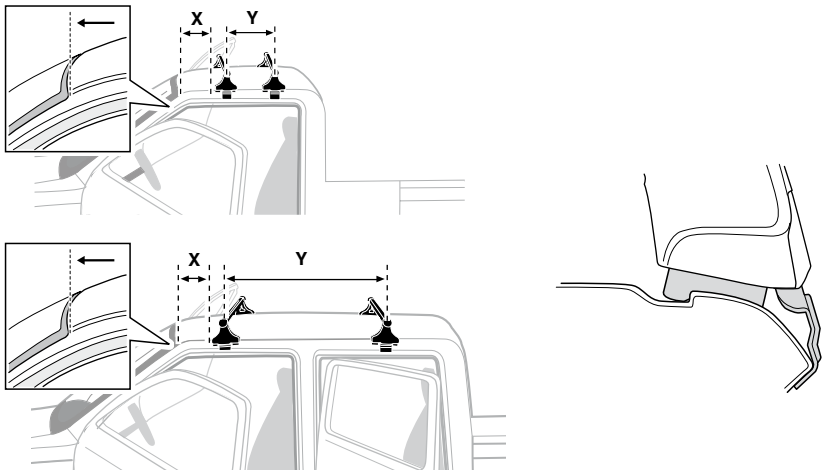


5**DODGE Ram 1500, 2-dr Single Cab, 09–****DODGE Ram 2500 / 3500, 2-dr Standard Cab, *09–****DODGE Ram 1500, 4-dr Crew Cab, 09–****DODGE Ram 1500, 4-dr Double Cab, 09–****DODGE Ram 2500 / 3500, 4-dr Crew Cab, *09–****DODGE Ram 2500 / 3500, 4-dr Mega Cab, *09–****DODGE Ram 2500 / 3500, 4-dr Quad Cab, *09–**

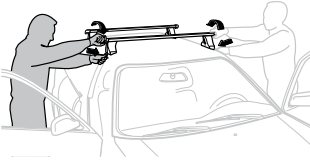
6



	X mm	Y mm	X inch	Y inch
DODGE Ram 1500, 2-dr Single Cab, 09-	110 mm	350 mm	4 1/4"	13 3/4"
DODGE Ram 1500, 4-dr Crew Cab, 09-	110 mm	800 mm	4 1/4"	31 1/2"
DODGE Ram 1500, 4-dr Double Cab, 09-	110 mm	800 mm	4 1/4"	31 1/2"
DODGE Ram 2500 / 3500, 2-dr Standard Cab, *09-	110 mm	350 mm	4 1/4"	13 3/4"
DODGE Ram 2500 / 3500, 4-dr Crew Cab, *09-	110 mm	800 mm	4 1/4"	31 1/2"
DODGE Ram 2500 / 3500, 4-dr Mega Cab, *09-	110 mm	800 mm	4 1/4"	31 1/2"
DODGE Ram 2500 / 3500, 4-dr Quad Cab, *09-	110 mm	800 mm	4 1/4"	31 1/2"



7



GB/US Tighten alternately
D Die Schrauben abwechselnd anziehen
F Serrer alternativement chaque côté
NL Afwisselend aan de linker- en de rechterkant aandraaien
I Alternare il serraggio delle viti
E Apertar alternativamente
PT Aperte alternadamente
S Dra åt växelvis
FIN Kierrä vuorotellen
EST Pinguldage vaheldumisi
LAT Pievelciēt pamišus
LIT Užsukinėkite pakaitomis
PL Śruby dokręcaj naprzemiennie
RU Затягивайте попеременно

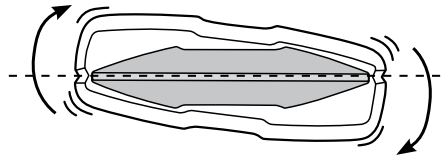
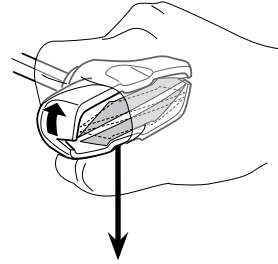
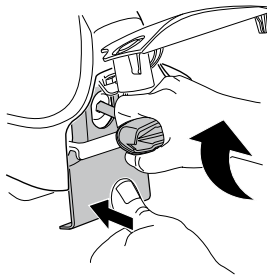
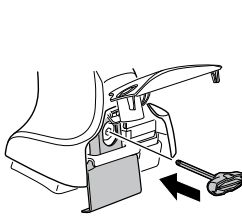
CZ Pokręťta bagażnika dokręcaj dokręcaj naprzemiennie.
SK Doťahujte striedavo
SLO Privijajte izmenično.
HR Naizmenično zategnite
HU Egymástól függetlenül szorítandó
GR Σφιγγεται εναλλάξ
TR Dönüşümlü sıkın

中文 交替拧紧

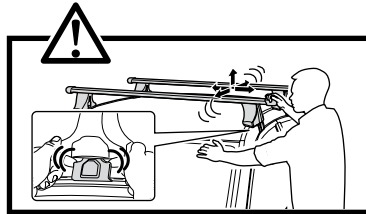
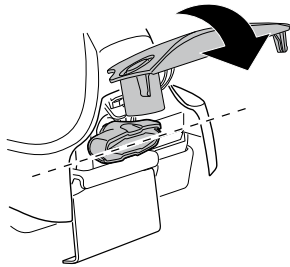
한국어 번갈아 가며 조이십시오.

日本語 交互に締め付けてください。

ไทย ชั้้นในแบบสลับ



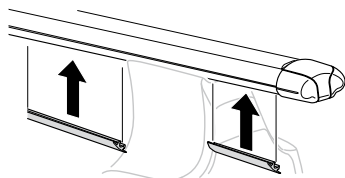
≈ 3 Nm

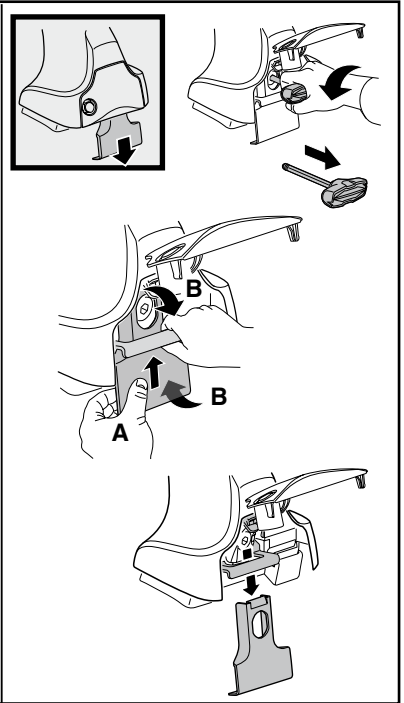
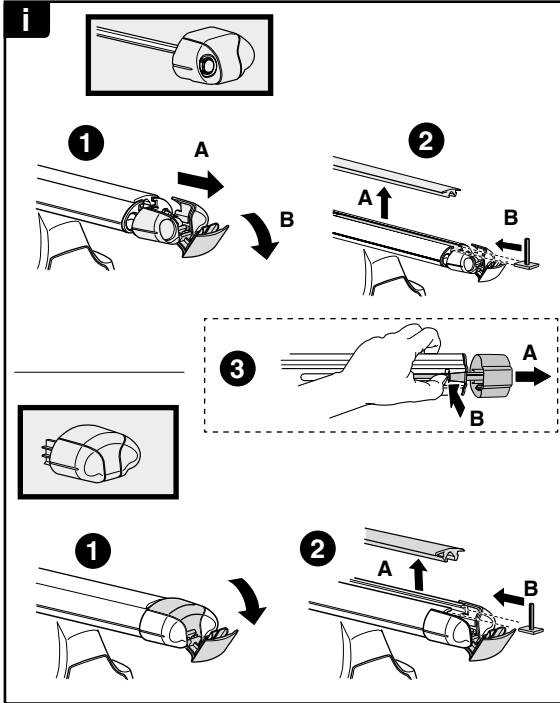


8

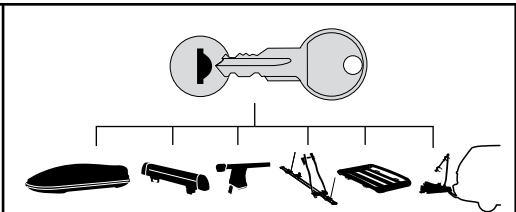


x1
17 mm

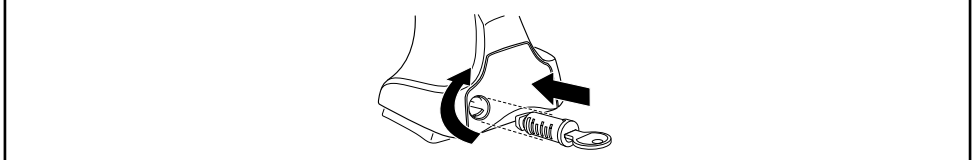




THULE
SWEDEN
**ONE
KEY
SYSTEM**



- 544 (x4)
 - 596 (x6)
 - 588 (x8)
 - 510 (x10)
 - 452 (x12)
- NA
EUR
ASIA



WW ▶ Thule Sweden AB, Box 69, 330 33 Hillerstorp, SWEDEN
NA ▶ Thule Inc., 42 Silvermine Road, Seymour, Connecticut 06483, USA

info@thule.com
customer.service@thule.com

www.thule.com