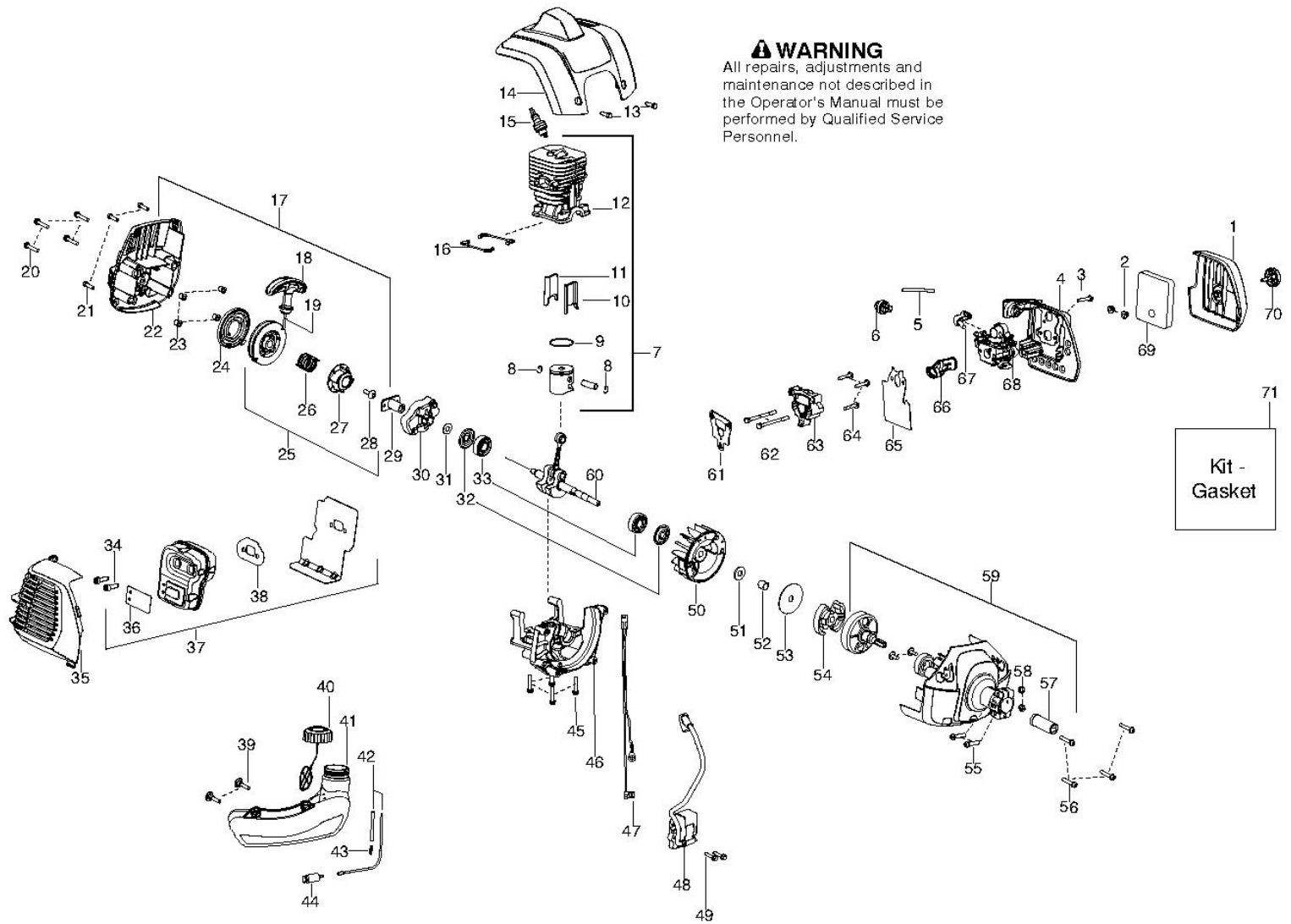


ENGINE

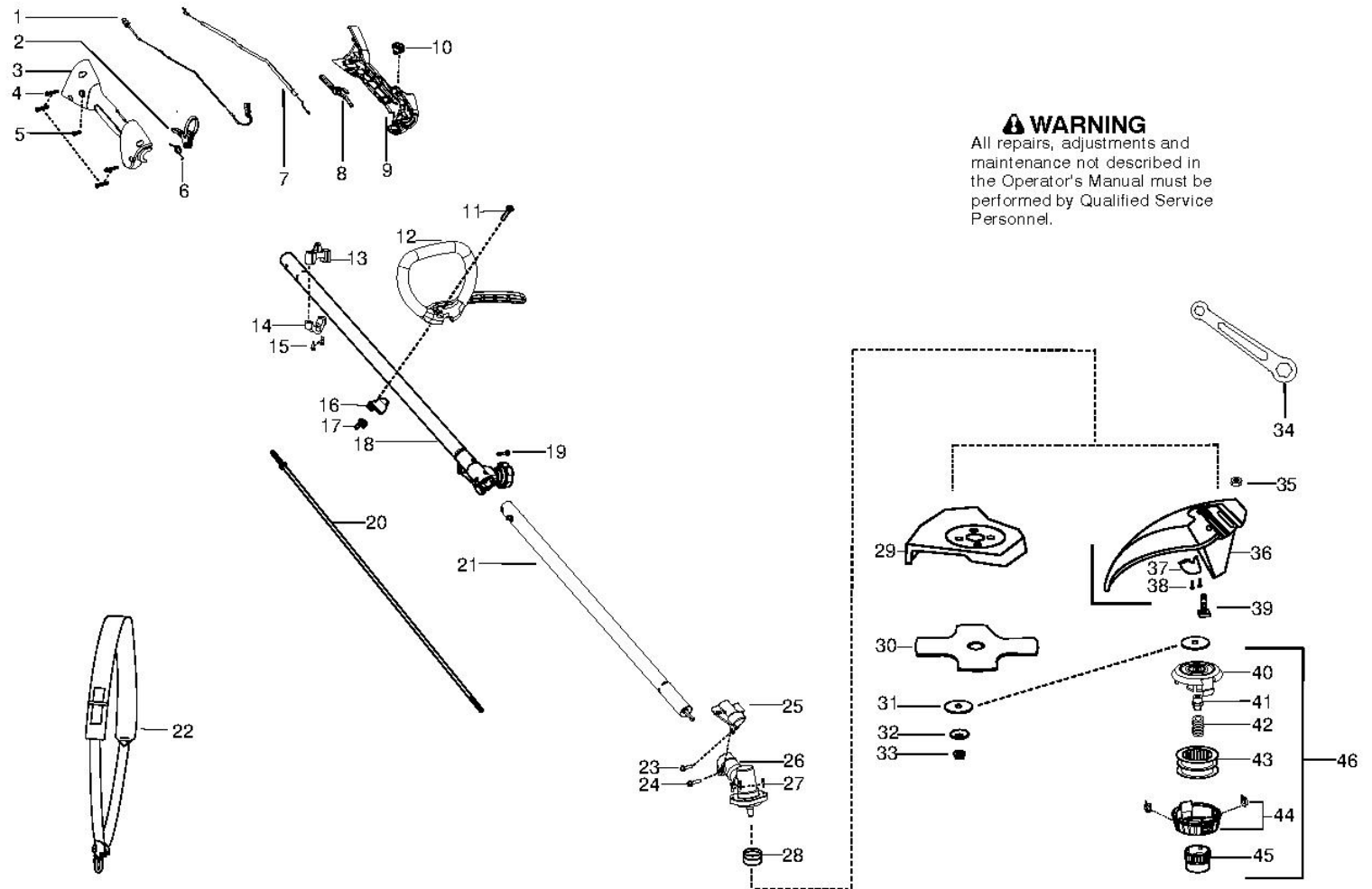


Ref	Part No.	Description	QTY	KIT
1	545 17 70-01	FILTER COVER	1	
2	530 01 61-01	NUT	1	
3	530 01 63-01	SCREW	1	
4	545 17 69-01	BASE	1	
6	530 04 77-21	PRIMER	1	
7	545 00 80-46	CYLINDER ASSY	1	
8	545 19 48-01	RETAINER	1	
9	545 19 46-01	PISTON RING	1	
10	545 19 49-01	INSERT	1	
11	545 19 50-01	INSERT	1	
12	545 18 18-01	CYLINDER	1	
13	530 01 64-49	SCREW	1	
14	545 15 64-01	CYLINDER COVER	1	
15	952 03 02-49	SPARK PLUG	1	
16	545 00 80-44	SEALING	1	

Ref	Part No.	Description	QTY	KIT
17	545 19 07-01	STARTER ASSY	1	
18	545 20 84-01	STARTER HANDLE	1	
19	545 02 99-01	STARTER ROPE	1	
20	530 01 58-97	SCREW	1	
21	530 01 64-49	SCREW	1	
22	545 19 06-01	STARTER HOUSING	1	
23	545 18 53-01	SPACER	1	
24	545 00 80-13	KIT	1	
25	545 00 80-49	STARTER PULLEY ASSY	1	
26	545 18 83-01	SPRING	1	
27	545 18 80-01	PAWL	1	
28	545 11 28-01	SCREW	1	
29	545 18 82-01	SLEEVE COUPLING	1	
30	545 18 87-01	CUP	1	
31	530 01 58-28	WASHER	1	
32	545 00 80-44	SEALING	1	
33	545 01 34-01	BEARING	1	
34	530 05 89-82	BOLT	1	
35	545 15 63-01	MUFFLER COVER	1	
36	545 00 80-70	SPARK ARRESTER	1	
37	545 18 07-01	MUFFLER ASSY	1	
38	545 00 80-44	SEALING	1	
39	530 01 64-45	SCREW FUEL TANK RETAINER	1	
40	545 21 59-01	TANK CAP ASSY	1	
41	545 18 21-02	FUEL TANK ASSY	1	
42	530 06 95-99	HOSE	1	
43	530 02 38-77	NIPPLE	1	
44	530 09 56-46	FILTER	1	
45	530 01 58-97	SCREW	1	
46	545 18 19-01	CRANKCASE	1	
47	545 19 16-01	WIRING ASSY	1	
48	545 18 97-01	IGNITION MODULE	1	
49	530 01 63-57	SCREW	1	
50	545 12 04-01	FLYWHEEL ASSY	1	
51	530 01 64-63	WASHER	1	
52	530 05 78-52	RING	1	
53	530 09 41-89	WASHER	1	
54	545 00 80-38	CLUTCH ASSY	1	
55	530 01 57-74	SCREW	1	
56	530 01 58-97	SCREW	1	
57	545 18 64-01	GUIDE	1	
58	530 01 57-68	NUT	1	
59	545 19 08-01	CLUTCH COVER ASSY	1	
60	545 00 80-47	CRANKSHAFT	1	
61	545 00 80-44	SEALING	1	
62	530 01 64-18	BOLT	1	
63	574 81 62-01	ADAPTER	1	
64	530 01 64-41	SCREW	1	
65	545 00 80-44	SEALING	1	

Ref	Part No.	Description	QTY	KIT
66	545 19 05-01	CONNECTION	1	
67	574 71 97-01	CHOKE LEVER	1	
68	545 00 80-42	CARBURETTOR	1	
69	545 19 59-01	AIR FILTER	1	
70	545 18 88-01	TURNING KNOB	1	
71	545 00 80-44	SEALING	1	

SHAFT & HANDLE



Ref	Part No.	Description	QTY	KIT
1	545 19 18-01	WIRE	1	
2	545 00 80-73	TRIGGER	1	
3	545 18 76-01	HANDLE HALF RIGHT	1	
4	530 01 64-49	SCREW	1	
5	530 01 58-05	SCREW	1	
6	545 19 00-01	SPRING	1	
7	545 19 93-01	WIRE	1	
8	545 18 78-02	THROTTLE LOCKOUT	1	
9	545 18 75-01	HANDLE HALF LEFT	1	
10	545 03 06-01	BRAKER	1	
11	530 01 58-20	SCREW	1	
12	545 21 60-01	J-HANDLE	1	
13	545 11 33-01	WELT HOOK	1	
14	545 05 66-01	STAPLE	1	
15	530 01 59-40	SCREW	1	
16	530 05 91-85	CLAMP	1	
17	530 01 61-52	WING NUT	1	
18	545 00 60-46	KIT DRIVESHAFT UPPER HUSKY	1	

Ref	Part No.	Description	QTY	KIT
19	530 01 63-44	SCREW	1	
20	545 13 20-02	SHAFT FLEXIBLE	1	
21	545 00 80-53	DRIVE SHAFT	1	
22	530 09 20-85	HARNESS	1	
23	530 01 57-75	SCREW	1	
24	530 01 60-14	SCREW	1	
25	545 15 07-01	BRACKET	1	
26	530 09 61-00	GEARBOX,	1	
27	530 01 63-12	SCREW	1	
28	530 09 58-15	CUP	1	
29	530 07 19-47	KIT	1	
30	530 05 58-92	ASSEMBLY	1	
31	530 09 58-16	WASHER	1	
32	530 01 62-40	WASHER	1	
33	530 01 57-93	NUT	1	
34	530 05 64-01	WRENCH	1	
35	530 01 51-97	NUT	1	
36	545 08 10-01	KIT	1	
37	530 05 22-86	BLADE	1	
38	530 01 58-14	SCREW	1	
39	530 01 58-20	SCREW	1	
40	537 41 93-02	HOUSING	1	
41	537 41 98-01	ADAPTER	1	
42	537 33 88-01	SPRING	1	
43	530 09 63-28	Assy spool (incl. line),	1	
44	545 00 33-65	EYELET	1	
45	537 41 96-01	KNOB	1	
46	537 41 92-02	TRIMMER HEAD	1	
	545 19 67-24	MANUAL OPERATORS SCA	1	
	545 19 67-25	MANUAL OPERATORS EUR	1	
	545 19 67-26	MANUAL OPERATORS EUR	1	
	545 19 67-27	MANUAL OPERATORS EUR	1	
	545 19 67-28	MANUAL OPERATORS EUR	1	
	545 19 67-29	MANUAL OPERATORS EUR	1	
	545 19 67-30	MANUAL OPERATORS TUR	1	
	545 07 57-01	DECAL	1	
	530 15 03-13	DECAL	1	
	530 05 63-35	DECAL	1	
	502 03 55-05	TRANSPORT GUARD	1	