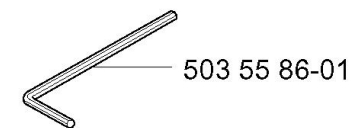
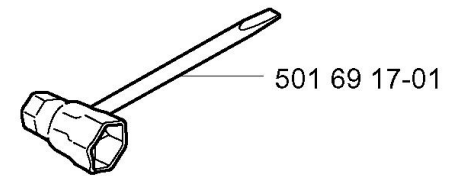
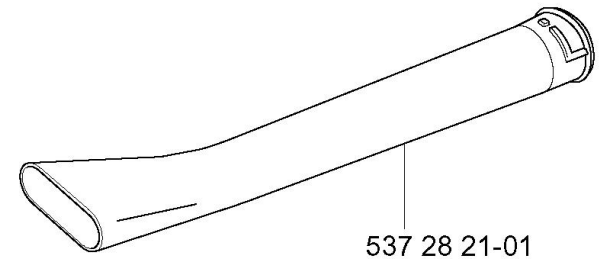
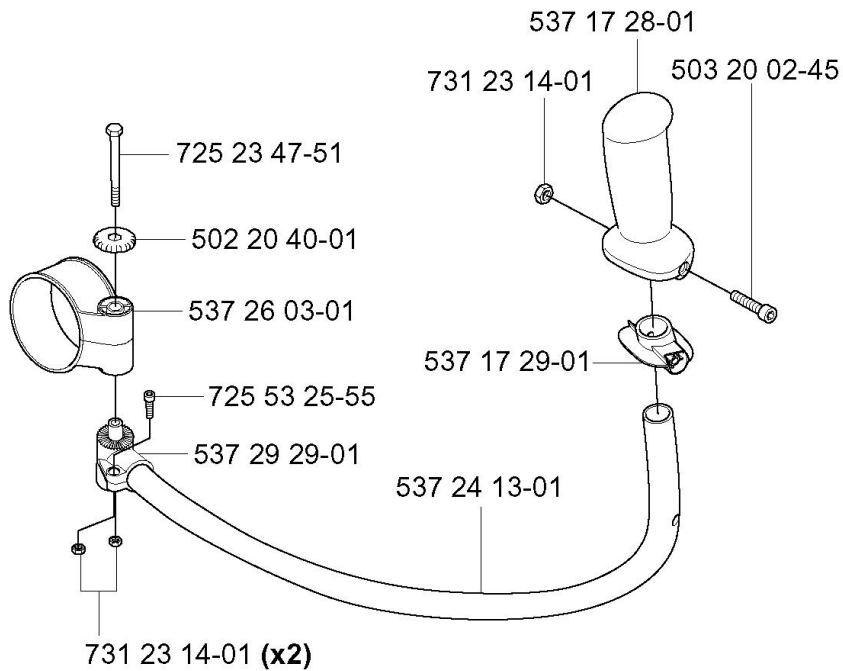


## ACCESSORIES

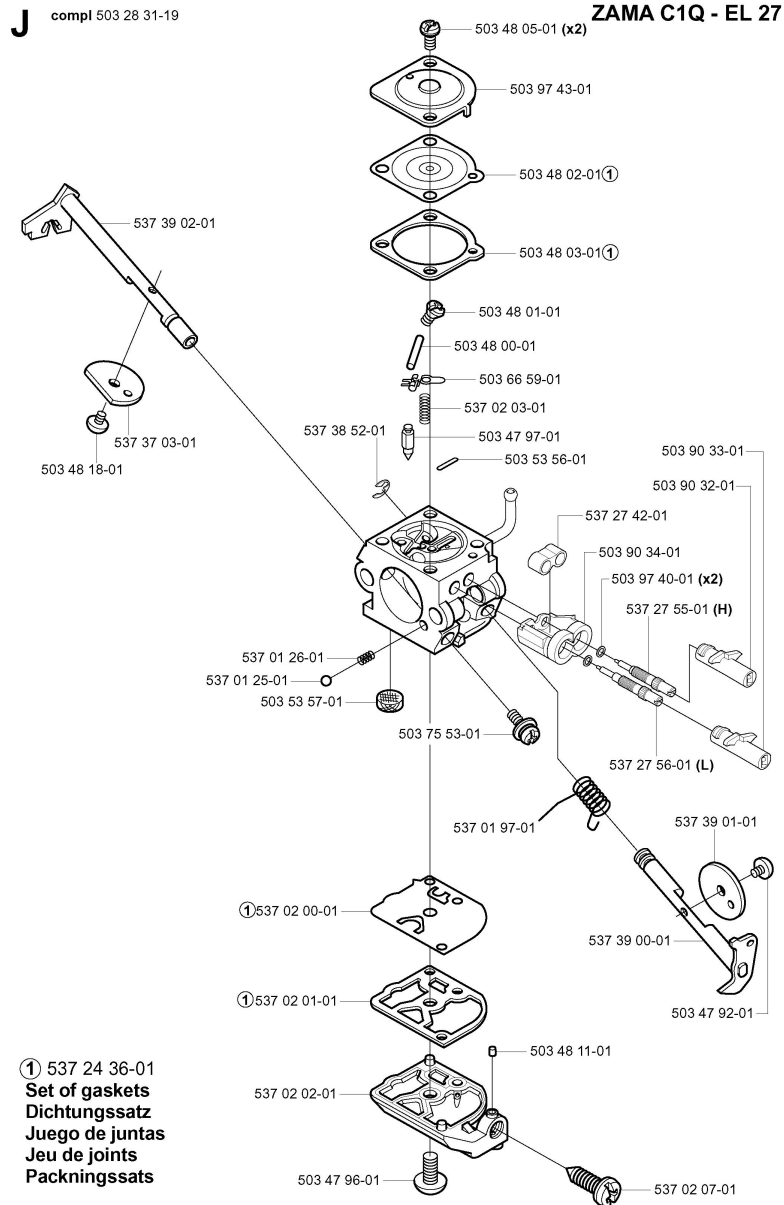
### L Accessories Zubehöre Accessoires Acessorios Tillbehör

compl 537 24 16-01



Part No.	Description	QTY	KIT
501 69 17-01	COMBINATION WRENCH	1	
502 20 40-01	KNOB	1	
503 20 02-45	SCREW IHSCFM	1	
503 55 86-01	SPANNER	1	
537 17 28-01	HANDLE	1	
537 17 29-01	COVER	1	
537 24 13-01	HANDLEBAR	1	
537 24 16-01	HANDLEBAR ASSY	1	
537 26 03-01	BRACKET	1	
537 28 21-01	PIPE	1	
537 29 29-01	BRACKET	1	
725 23 47-51	SCREW	1	
725 53 25-55	SCREW IHSCM	1	
731 23 14-01	NUT	1	
731 23 14-01	NUT	2	

# CARBURETOR DETAILS

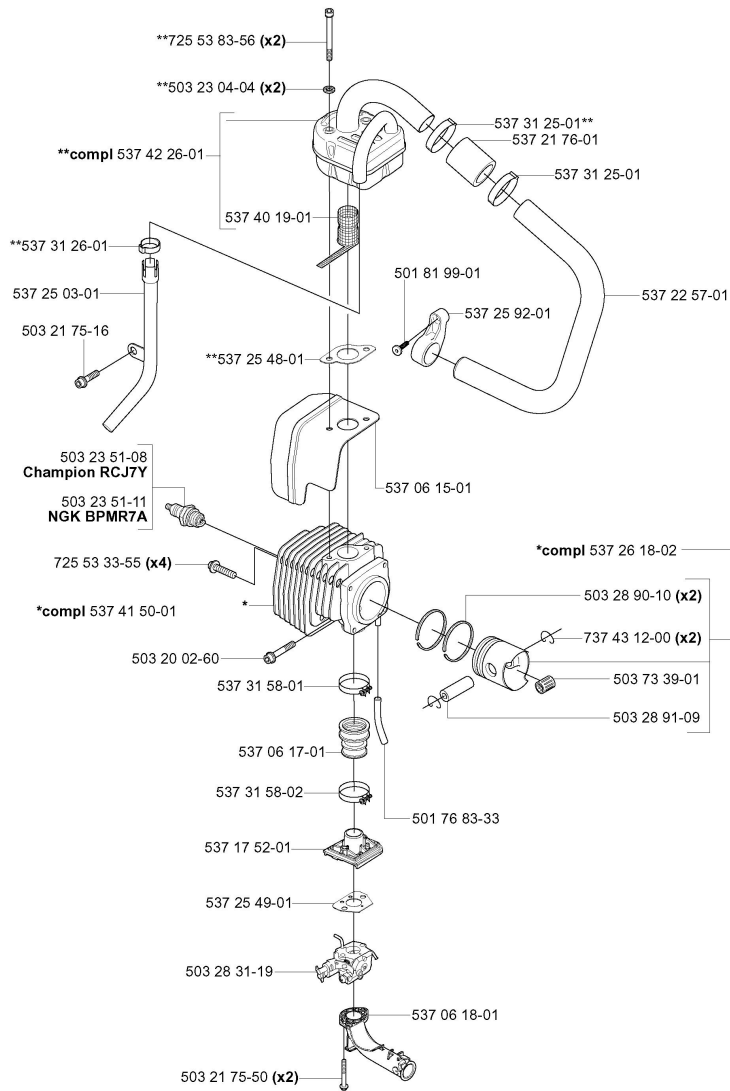


Part No.	Description	QTY	KIT
503 28 31-19	CARBURETTOR	1	
503 47 92-01	SCREW	1	
503 47 96-01	SCREW	1	
503 47 97-01	VALVE	1	
503 48 00-01	PIN RETAINING SCREW	1	
503 48 01-01	SCREW	1	
503 48 02-01	DIAPHRAGM	1	
503 48 03-01	GASKET	1	
503 48 05-01	SCREW	2	
503 48 11-01	PIECE	1	
503 48 18-01	SCREW	1	
503 53 56-01	PLUG WELCH	1	
503 53 57-01	STRAINER	1	
503 66 59-01	LEVER	1	
503 75 53-01	SCREW	1	
503 90 32-01	LIMITER CAP	1	
503 90 33-01	LIMITER CAP	1	
503 90 34-01	RETAINER	1	

Part No.	Description	QTY	KIT
503 97 40-01	WASHER	2	
503 97 43-01	COVER	1	
537 01 25-01	BALL	1	
537 01 26-01	SPRING	1	
537 01 97-01	SPRING	1	
537 02 00-01	DIAPHRAGM PUMP	1	
537 02 01-01	GASKET PUMP	1	
537 02 02-01	COVER	1	
537 02 03-01	SPRING	1	
537 02 07-01	SCREW	1	
537 27 42-01	BOOT	1	
537 27 55-01	SCREW	1	
537 27 56-01	SCREW	1	
537 37 03-01	VALVE	1	
537 38 52-01	CLIP	1	
537 39 00-01	SHAFT ASSY	1	
537 39 01-01	VALVE	1	
537 39 02-01	SHAFT ASSY	1	

CYLINDER, PISTON & MUFFLER

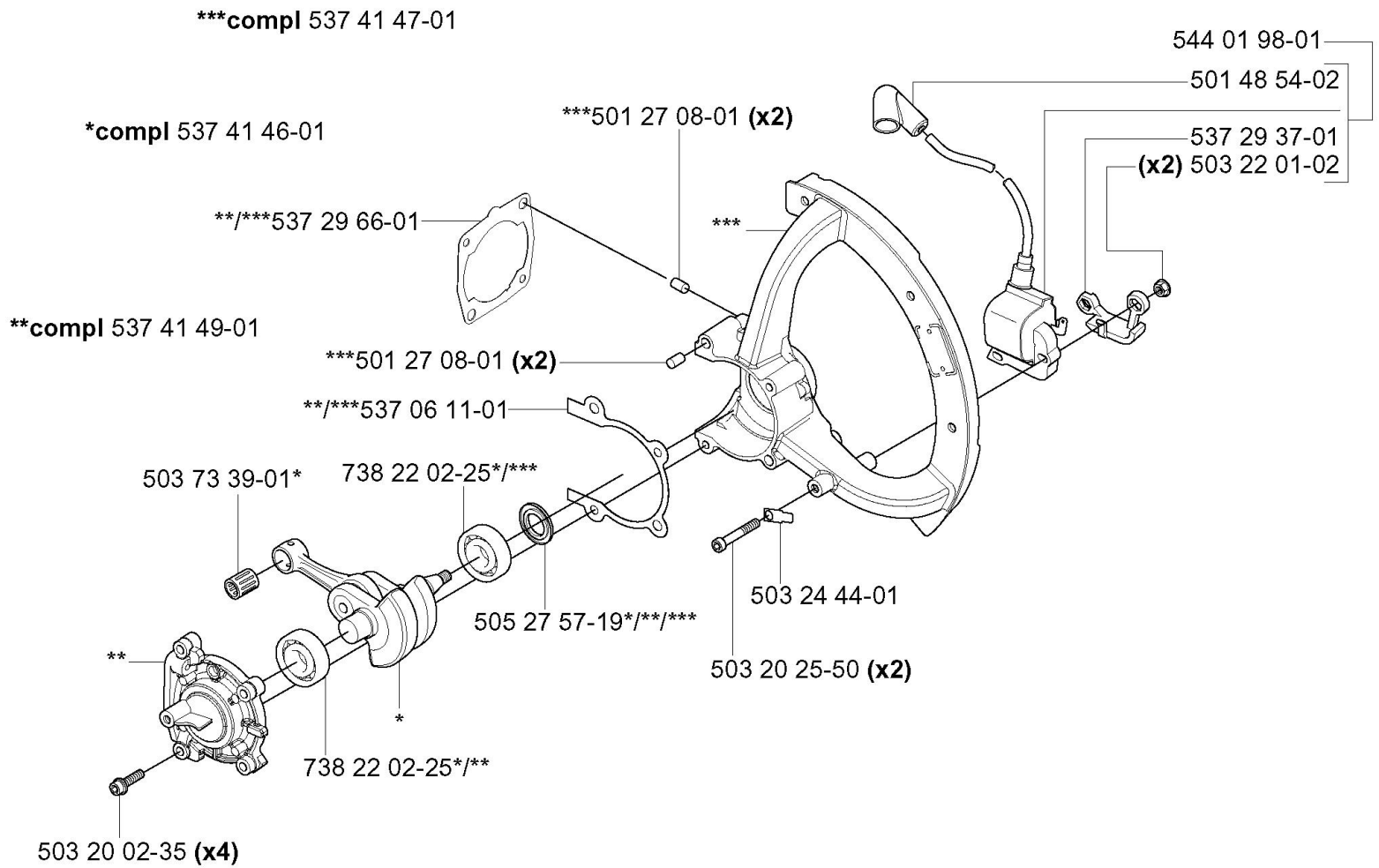
E



Part No.	Description	QTY	KIT
501 76 83-33	FUEL HOSE	1	
501 81 99-01	SCREW	1	
503 20 02-60	SCREW IHSCFM	1	
503 21 75-16	SCREW IHSCFT	1	
503 21 75-50	SCREW IHSCFT	2	
503 23 04-04	WASHER	2	
503 23 51-08	SPARK PLUG	1	
503 23 51-11	SPARK PLUG	1	
503 28 31-19	CARBURETTOR	1	
503 28 90-10	PISTON RING	2	
503 28 91-09	PISTON PIN	1	
503 73 39-01	BEARING	1	
537 06 15-01	HEAT DEFLECTOR	1	
537 06 17-01	INLET PIPE	1	
537 06 18-01	INLET BEND	1	
537 17 52-01	BRACKET	1	
537 21 76-01	HOSE	1	
537 22 57-01	PIPE	1	

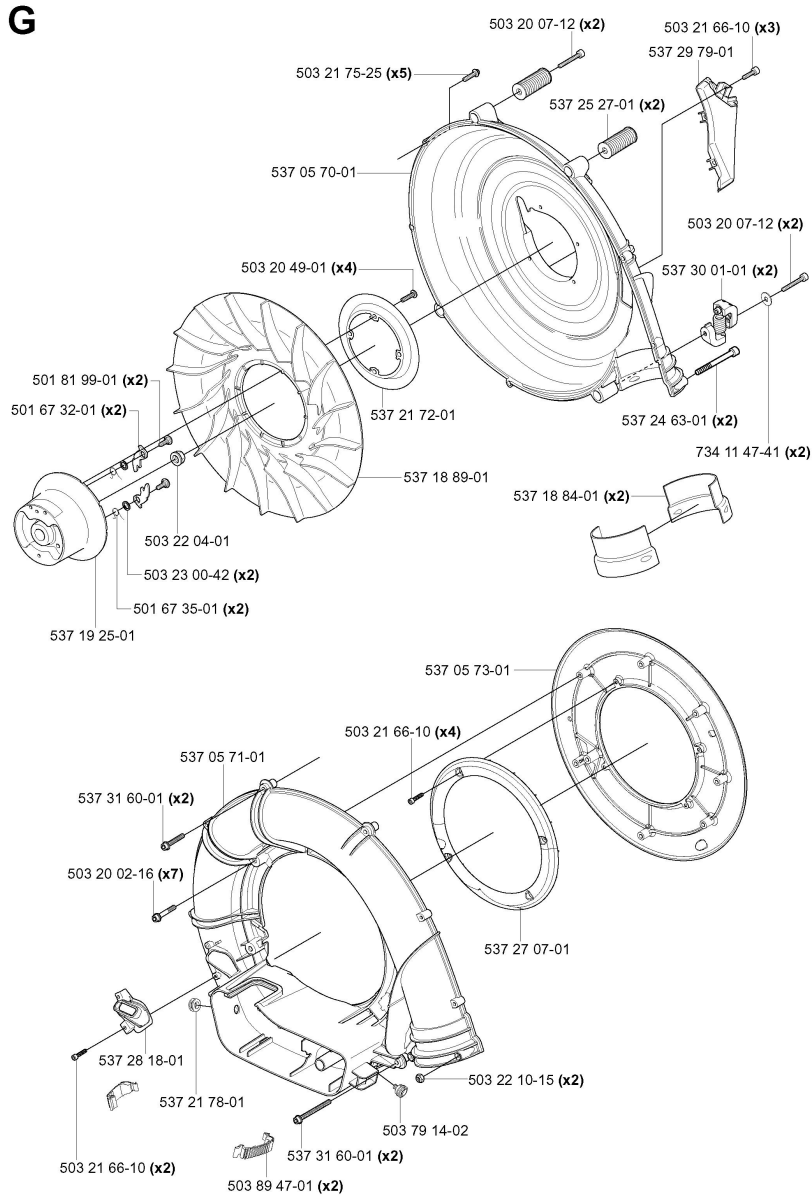
<b>Part No.</b>	<b>Description</b>	<b>QTY</b>	<b>KIT</b>
537 25 03-01	OUTLET PIPE	1	
537 25 48-01	GASKET	1	
537 25 49-01	GASKET	1	
537 25 92-01	BRACKET	1	
537 26 18-02	PISTON	1	
537 31 25-01	HOSE CLAMP	1	
537 31 25-01	HOSE CLAMP	1	
537 31 26-01	HOSE CLAMP	1	
537 31 58-01	HOSE CLAMP	1	
537 31 58-02	HOSE CLAMP	1	
537 40 19-01	SPARK ARRESTOR SCREEN	1	
537 41 50-01	PISTON	1	
537 42 26-01	MUFFLER	1	
725 53 33-55	SCREW IHSCM	4	
725 53 83-56	SCREW	2	
737 43 12-00	CIRCLIP	2	

D



Part No.	Description	QTY	KIT
501 27 08-01	GUIDE BUSHING	2	
501 27 08-01	GUIDE BUSHING	2	
501 48 54-02	SPARK PLUG CAP	1	
503 20 02-35	SCREW IHSCFM	4	
503 20 25-50	SCREW IHSCM	2	
503 22 01-02	NUT FLANGE	2	
503 24 44-01	FLAT PIN	1	
503 73 39-01	BEARING	1	
505 27 57-19	SEALING RING	1	
537 06 11-01	GASKET	1	
537 29 37-01	RETAINER	1	
537 29 66-01	GASKET	1	
537 41 46-01	CRANKSHAFT ASSY	1	
537 41 47-01	CRANKCASE ASSY	1	
537 41 49-01	CAP	1	
544 01 98-01	IGNITION SYSTEM	1	
738 22 02-25	BALL BEARING	1	
738 22 02-25	BALL BEARING	1	

FAN



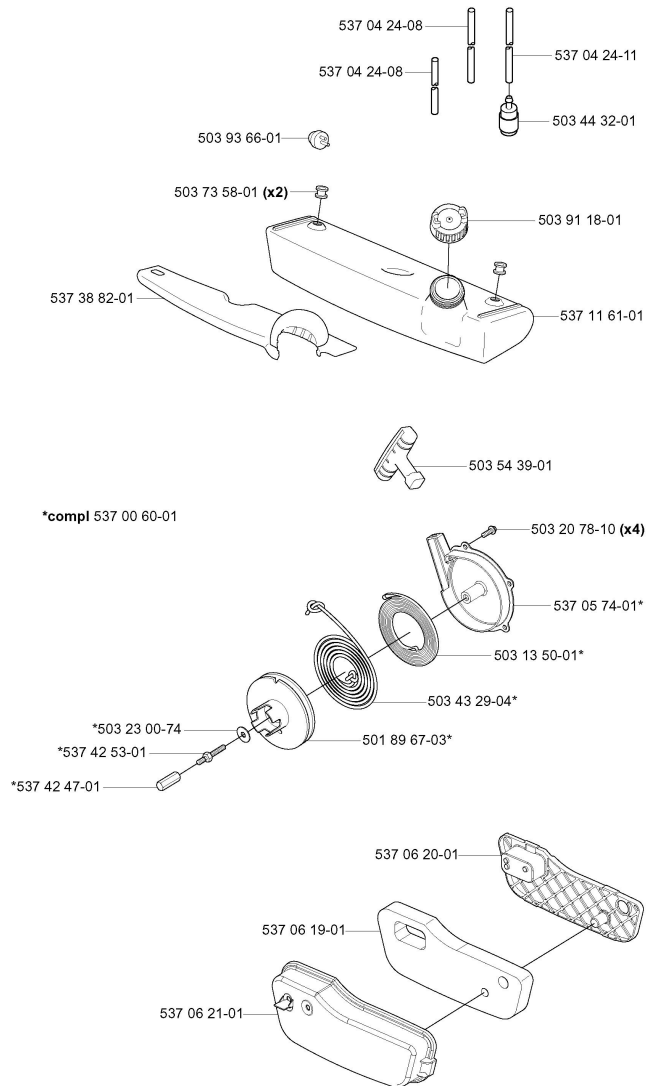
Part No.	Description	QTY	KIT
501 67 32-01	PAWL	2	
501 67 35-01	SPRING	2	
501 81 99-01	SCREW	2	
503 20 02-16	SCREW IHSCFM	7	
503 20 07-12	SCREW IHSCFM	2	
503 20 07-12	SCREW IHSCFM	2	
503 20 49-01	SCREW IHPANM	4	
503 21 66-10	SCREW IHSCT	2	
503 21 66-10	SCREW IHSCT	4	
503 21 66-10	SCREW IHSCT	3	
503 21 75-25	SCREW IHSCFT	5	
503 22 04-01	NUT	1	
503 22 10-15	NUT	2	
503 23 00-42	WASHER STEEL	2	
503 79 14-02	GROMMET	1	
503 89 47-01	SNAP	2	
537 05 70-01	FAN HOUSING	1	
537 05 71-01	FAN HOUSING	1	

<b>Part No.</b>	<b>Description</b>	<b>QTY</b>	<b>KIT</b>
537 05 73-01	GUIDE PLATE	1	
537 18 84-01	WEAR RING	2	
537 18 89-01	IMPELLER	1	
537 19 25-01	HUB	1	
537 21 72-01	ATTACHMENT PLATE	1	
537 21 78-01	GROMMET	1	
537 24 63-01	SCREW	2	
537 25 27-01	ANTIVIBRATION ELEMENT	2	
537 27 07-01	AIR CONDUCTOR	1	
537 28 18-01	AIR NOZZLE	1	
537 29 79-01	AIR CONDUCTOR	1	
537 30 01-01	ANTIVIBRATION ELEMENT	2	
537 31 60-01	SCREW	2	
537 31 60-01	SCREW	2	
734 11 47-41	WASHER STEEL	2	



## FUEL TANK, STARTER & AIR FILTER

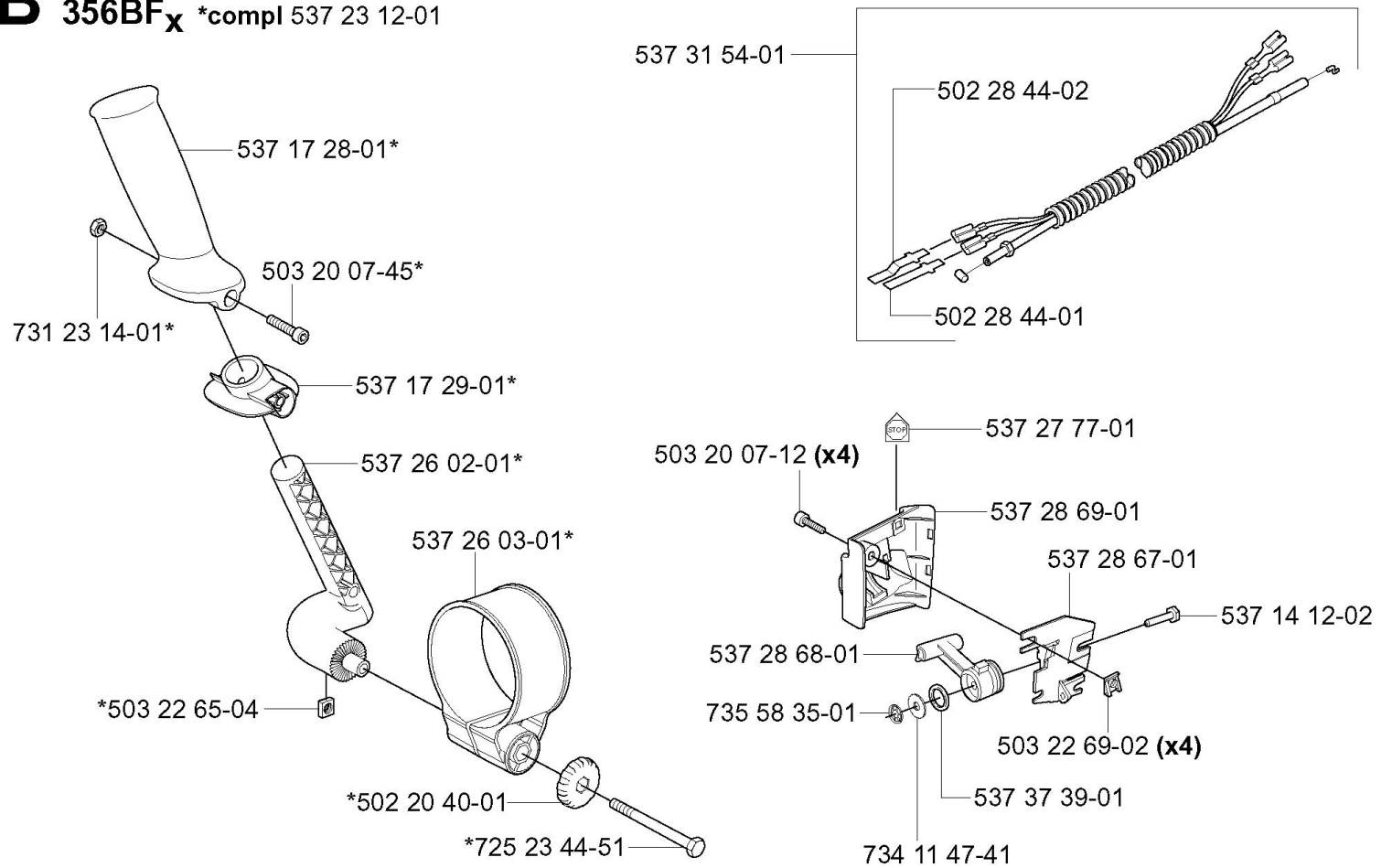
### H



Part No.	Description	QTY	KIT
501 89 67-03	STARTER PULLEY	1	
503 13 50-01	RECOIL SPRING ASSY	1	
503 20 78-10	SCREW IHSCFM	4	
503 23 00-74	WASHER STEEL	1	
503 43 29-04	STARTER CORD	1	
503 44 32-01	FILTER	1	
503 54 39-01	STARTER HANDLE	1	
503 73 58-01	BUSHING	2	
503 91 18-01	TANK CAP	1	
503 93 66-01	PRIMER HOUSING	1	
537 00 60-01	STARTER	1	
537 04 24-08	FUEL HOSE	1	
537 04 24-08	FUEL HOSE	1	
537 04 24-11	FUEL HOSE	1	
537 05 74-01	STARTER HOUSING	1	
537 06 19-01	AIR FILTER	1	
537 06 20-01	GRID	1	
537 06 21-01	CAP	1	

<b>Part No.</b>	<b>Description</b>	<b>QTY</b>	<b>KIT</b>
537 11 61-01	FUEL TANK	1	
537 38 82-01	COVER	1	
537 42 47-01	SPACER	1	
537 42 53-01	SCREW	1	

**B** 356BF<sub>x</sub> \*compl 537 23 12-01

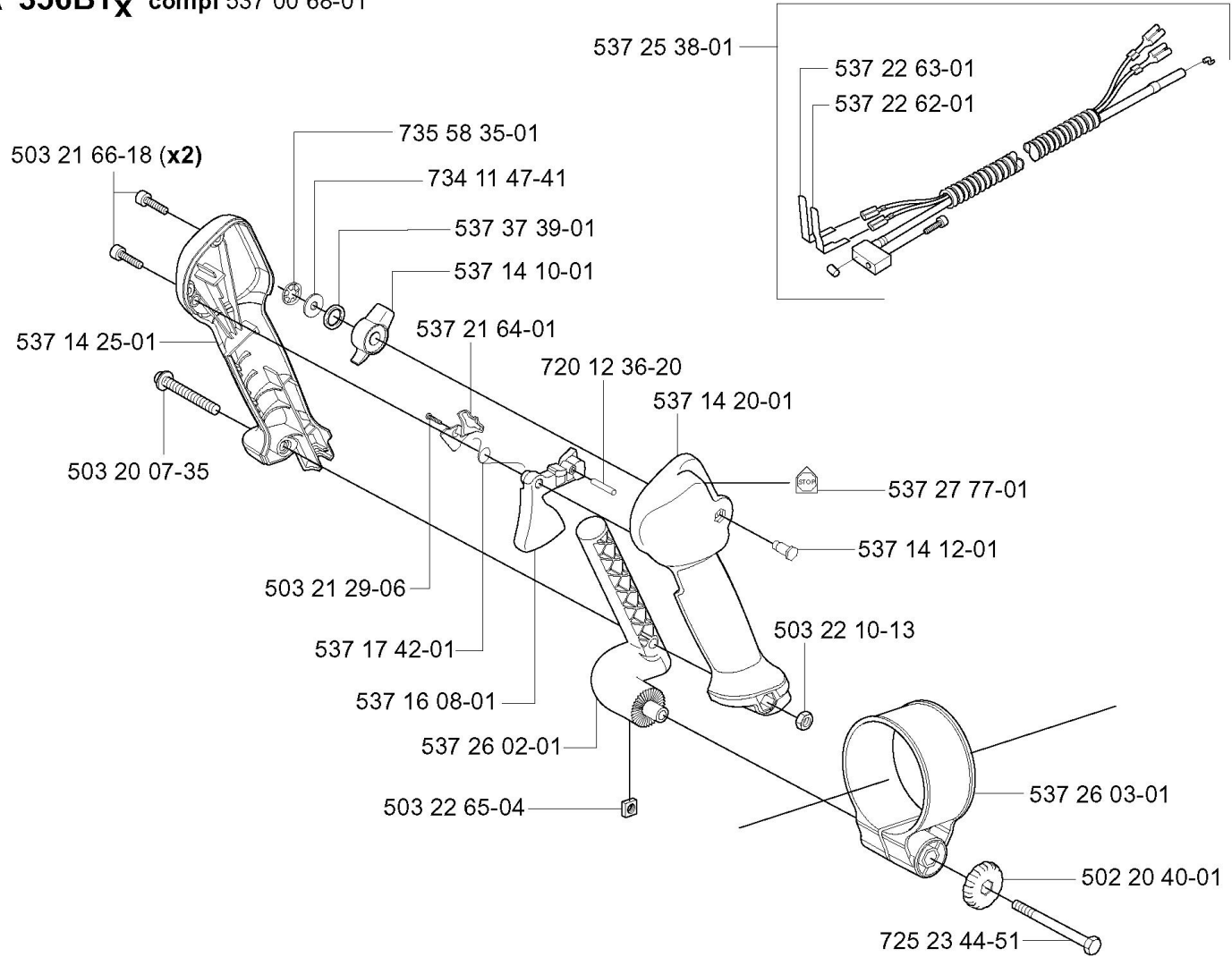


Part No.	Description	QTY	KIT
502 20 40-01	KNOB	1	
502 28 44-01	SPRING	1	
502 28 44-02	SPRING	1	
503 20 07-12	SCREW IHSCFM	4	
503 20 07-45	SCREW IHSCFM	1	
503 22 65-04	NUT	1	
503 22 69-02	NUT	4	
537 14 12-02	SHAFT PIVOT	1	
537 17 28-01	HANDLE	1	
537 17 29-01	COVER	1	
537 23 12-01	HANDLE	1	
537 26 02-01	STAY	1	
537 26 03-01	BRACKET	1	
537 27 77-01	PLATE	1	
537 28 67-01	BRACKET	1	
537 28 68-01	HANDLE	1	
537 28 69-01	COVER	1	
537 31 54-01	WIRING	1	

<b>Part No.</b>	<b>Description</b>	<b>QTY</b>	<b>KIT</b>
537 37 39-01	SPRING	1	
725 23 44-51	SCREW	1	
731 23 14-01	NUT	1	
734 11 47-41	WASHER STEEL	1	
735 58 35-01	LOCK WASHER	1	

**HANDLE & CONTROLS**

**A 356BT<sub>x</sub> compl 537 00 68-01**

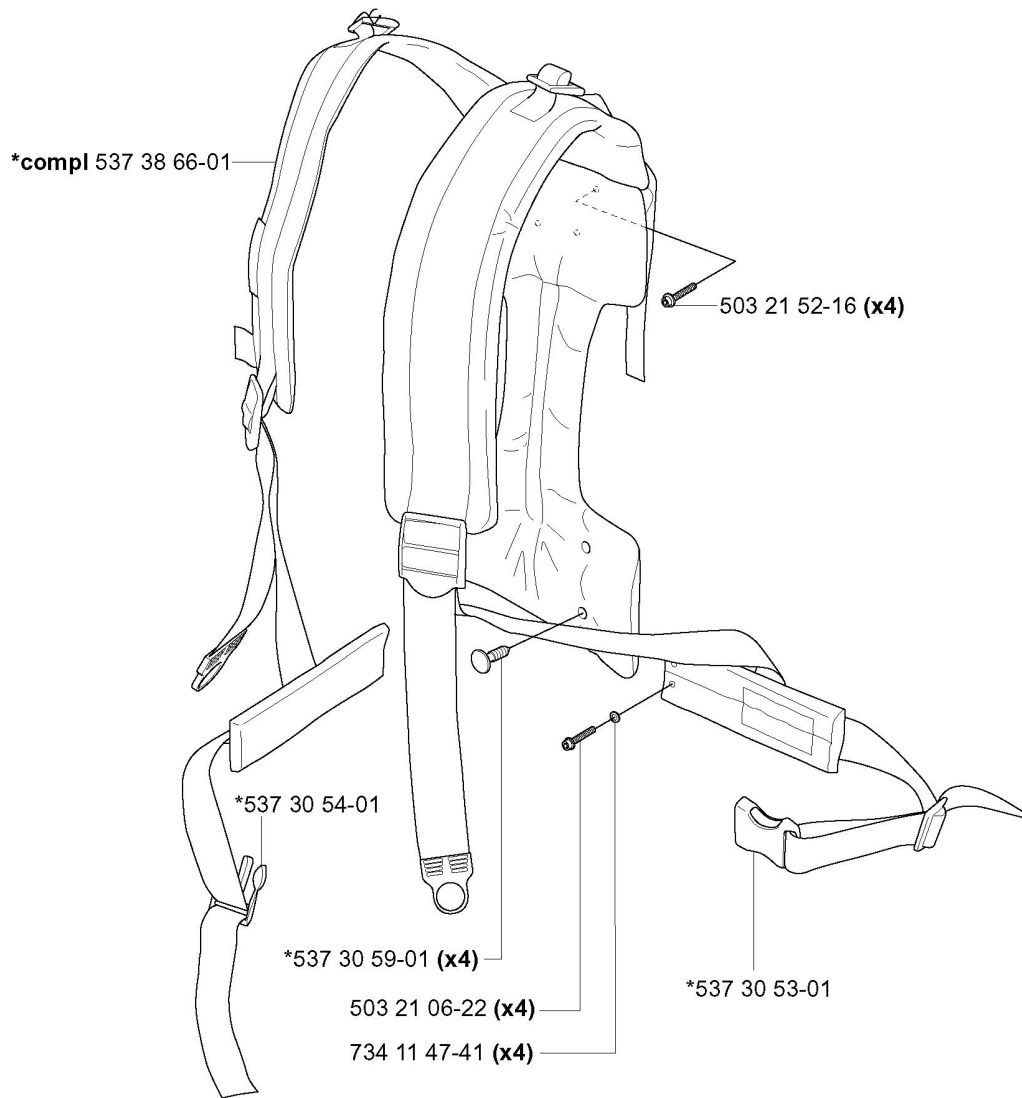


Part No.	Description	QTY	KIT
502 20 40-01	KNOB	1	
503 20 07-35	SCREW IHSCFM	1	
503 21 29-06	SCREW CCRPANT	1	
503 21 66-18	SCREW IHSCF	2	
503 22 10-13	NUT	1	
503 22 65-04	NUT	1	
537 00 68-01	HANDLE ASSY	1	
537 14 10-01	LEVER	1	
537 14 12-01	SHAFT	1	
537 14 20-01	CASE(R)	1	
537 14 25-01	CASE(L)	1	
537 16 08-01	THROTTLE TRIGGER	1	
537 17 42-01	SPRING THROTTLE TRIG	1	
537 21 64-01	STOPPER	1	
537 22 62-01	CONNECTOR	1	
537 22 63-01	CONNECTOR	1	
537 25 38-01	WIRING ASSY	1	
537 26 02-01	STAY	1	

<b>Part No.</b>	<b>Description</b>	<b>QTY</b>	<b>KIT</b>
537 26 03-01	BRACKET	1	
537 27 77-01	PLATE	1	
537 37 39-01	SPRING	1	
720 12 36-20	PIN	1	
725 23 44-51	SCREW	1	
734 11 47-41	WASHER STEEL	1	
735 58 35-01	LOCK WASHER	1	

HARNESS

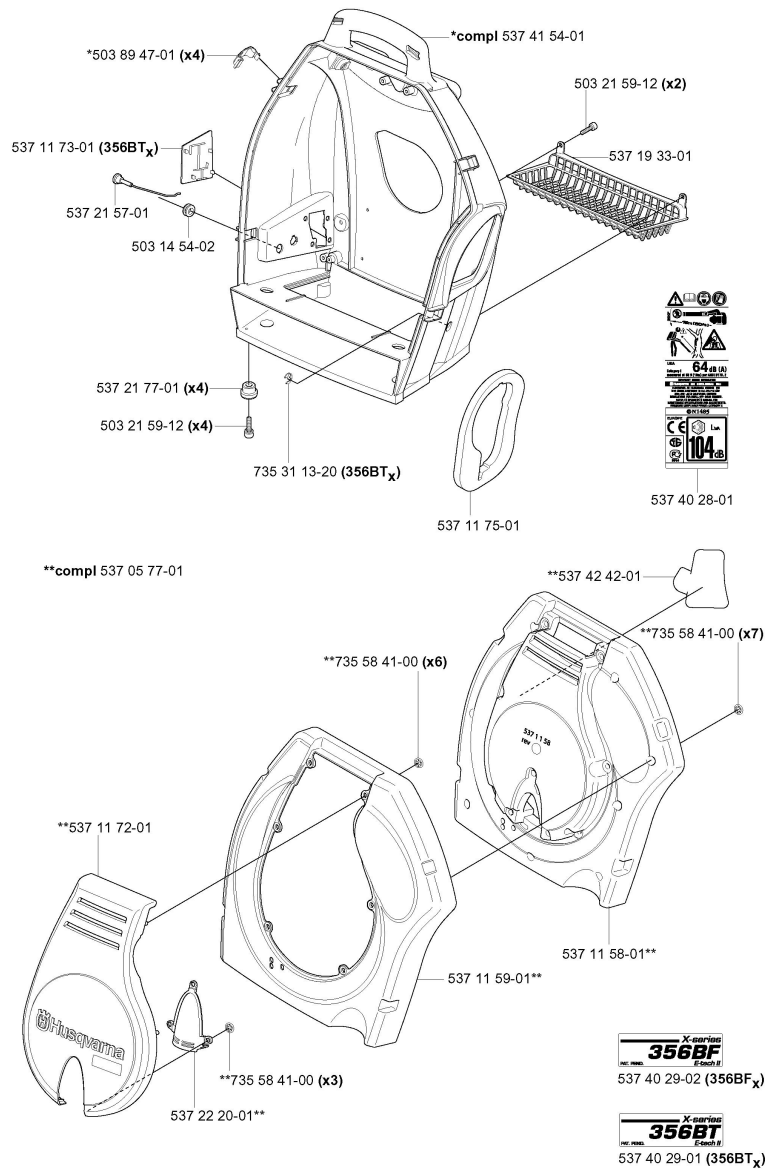
K



Part No.	Description	QTY	KIT
503 21 06-22	SCREW IHSCFT	4	
503 21 52-16	SCREW IHSCFT	4	
537 30 53-01	BUCKLE	1	
537 30 54-01	BUCKLE	1	
537 30 59-01	RIVET	4	
537 38 66-01	HARNESS ASSY	1	
734 11 47-41	WASHER STEEL	4	

# HOUSING

**F**

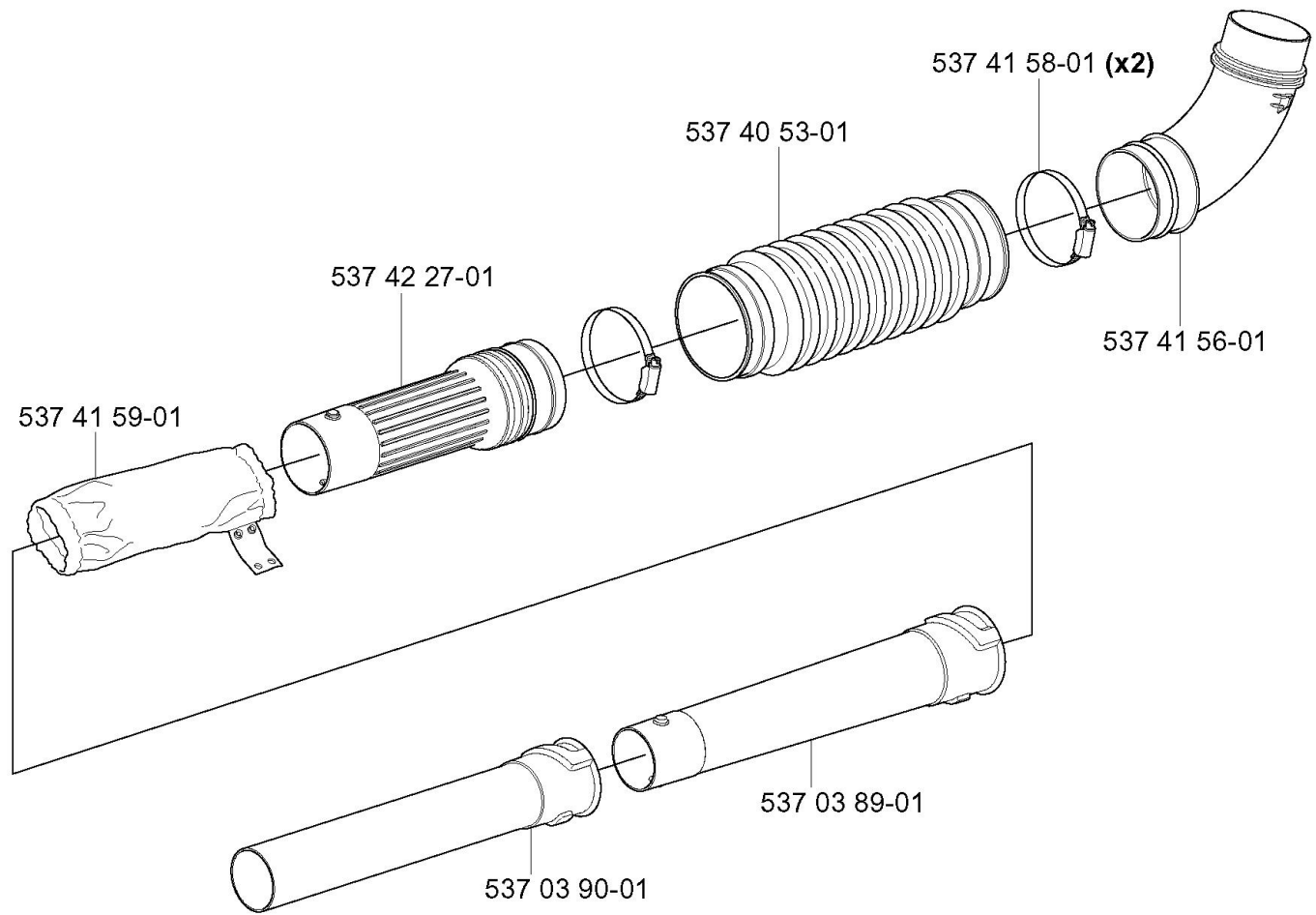


Part No.	Description	QTY	KIT
503 14 54-02	GROMMET	1	
503 21 59-12	SCREW IHSCT	4	
503 21 59-12	SCREW IHSCT	2	
503 89 47-01	SNAP	4	
537 05 77-01	CAP	1	
537 11 58-01	INSULATING	1	
537 11 59-01	CAP	1	
537 11 72-01	CAP	1	
537 11 73-01	COVER	1	
537 11 75-01	INSULATING	1	
537 19 33-01	GRID	1	
537 21 57-01	CHOKE CONTROL	1	
537 21 77-01	BASE	4	
537 22 20-01	EXHAUST COVER	1	
537 40 28-01	LABEL	1	
537 40 29-01	LABEL	1	
537 40 29-02	LABEL	1	
537 41 54-01	CHASSIS	1	



<b>Part No.</b>	<b>Description</b>	<b>QTY</b>	<b>KIT</b>
537 42 42-01	ALUMINIUM FOIL	1	
735 31 13-20	E-CLIP	1	
735 58 41-00	LOCK WASHER	3	
735 58 41-00	LOCK WASHER	6	
735 58 41-00	LOCK WASHER	7	

C



Part No.	Description	QTY	KIT
537 03 89-01	PIPE	1	
537 03 90-01	PIPE	1	
537 40 53-01	BELLOWS	1	
537 41 56-01	PIPE BEND	1	
537 41 58-01	HOSE CLAMP	2	
537 41 59-01	COVER	1	
537 42 27-01	PIPE	1	