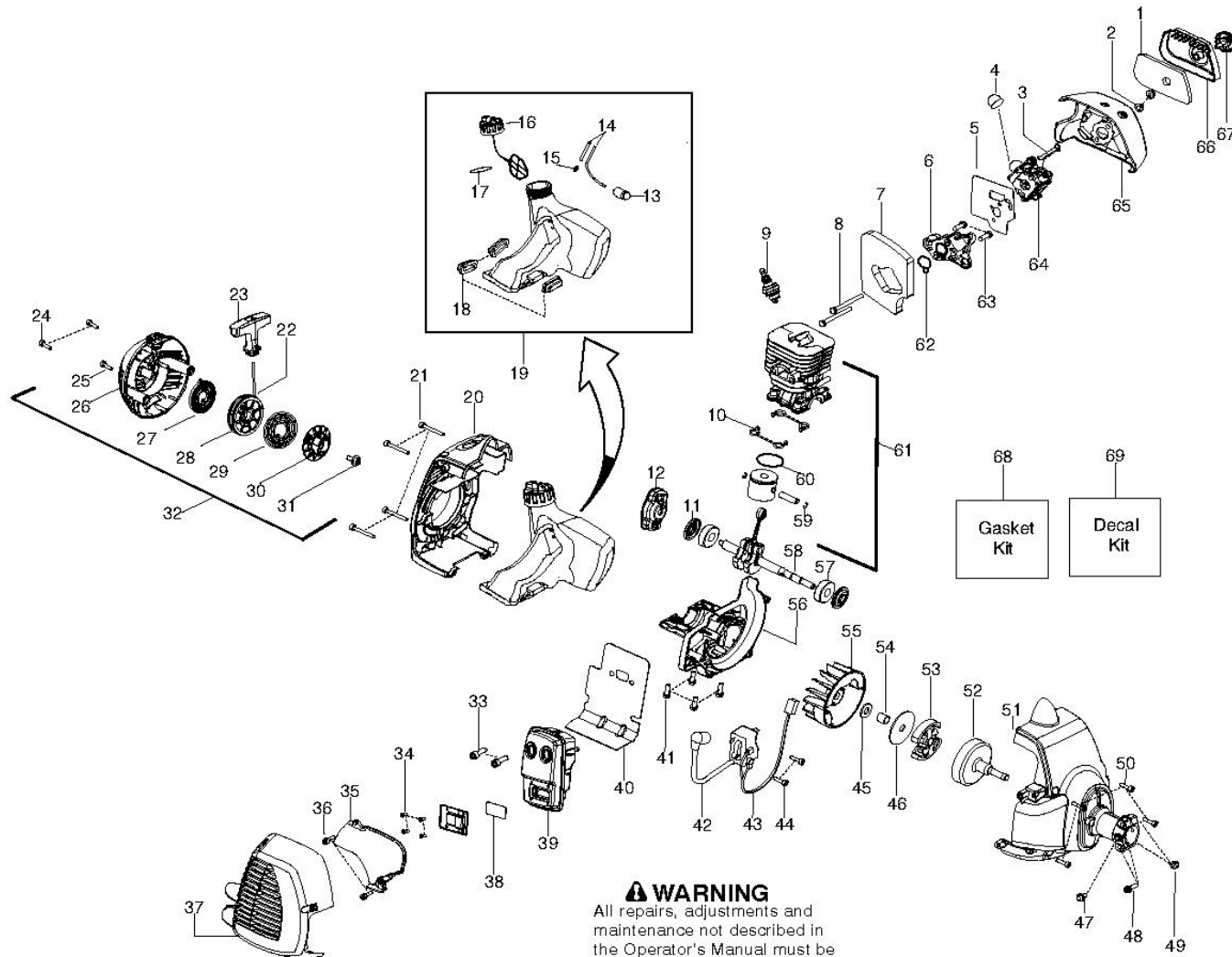


ENGINE



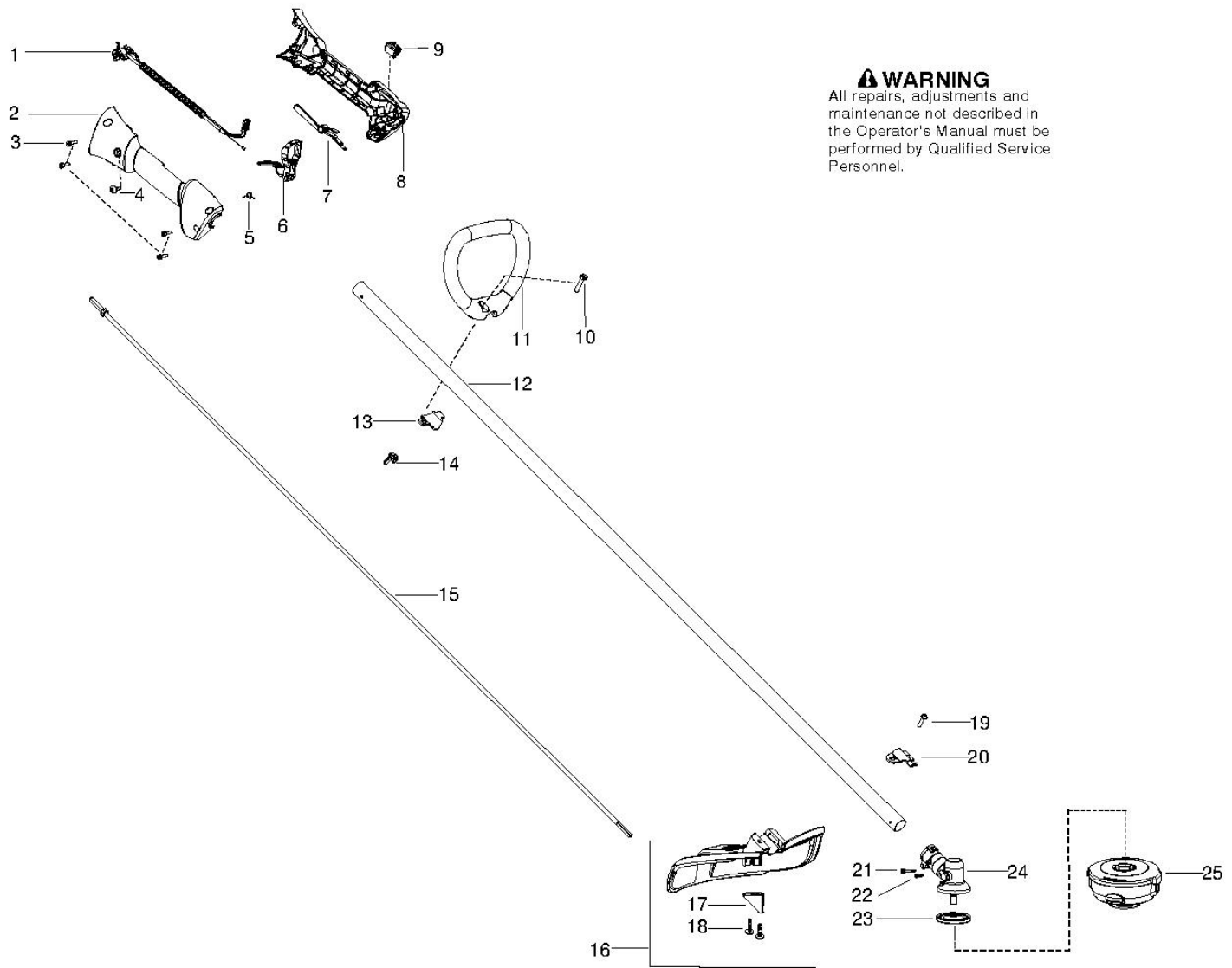
⚠ WARNING
 All repairs, adjustments and maintenance not described in the Operator's Manual must be performed by Qualified Service Personnel.

Ref	Part No.	Description	QTY	KIT
1	530 15 02-53	AIR FILTER	1	
2	530 01 61-01	NUT	1	
3	530 05 78-44	LEVER	1	
4	530 05 87-09	PRIMER BULB	1	
5	545 00 80-86	KIT-CARB. GASKET	1	7, 61
6	530 03 55-96	SPACER	1	
7	545 00 80-84	O-RING - FUEL CAP (KIT)	1	
8	530 01 64-00	BOLT	1	
9	952 03 02-01	SPARK PLUG	1	
10	545 00 80-84	O-RING - FUEL CAP (KIT)	1	
11	545 00 80-84	O-RING - FUEL CAP (KIT)	1	
12	503 87 33-05	STARTER PAWL BRIDGE	1	
13	530 09 56-46	FILTER	1	
14	530 06 95-99	HOSE	1	15
15	530 02 38-77	NIPPLE	1	

Ref	Part No.	Description	QTY	KIT
16	530 15 03-50	TANK CAP	1	17
17	545 00 80-84	O-RING - FUEL CAP (KIT)	1	
18	530 05 97-80	INSULATOR	1	
19	545 18 08-70	KIT-FUEL TANK ASSY.	1	13, 14, 15, 16, 17, 18
20	576 38 21-01	KIT	1	
21	530 01 64-48	SCREW	1	
22	545 00 80-79	KIT-ROPE	1	
23	545 04 32-05	HANDLE	1	
24	530 01 64-26	SCREW	1	
25	530 01 64-49	SCREW	1	
26	576 38 21-01	KIT	1	
27	545 00 80-87	SPRING	1	
28	545 00 80-78	KIT-STARTER PULLEY	1	
29	544 03 88-02	SPRING	1	
30	544 03 87-02	DRIVER	1	
31	530 01 64-68	SCREW	1	
32	576 36 83-01	ASSEMBLY	1	22, 23, 25 - 31
33	530 05 89-82	BOLT	1	
34	530 01 52-41	SCREW	1	
35	530 15 04-40	PROTECTOR	1	
36	530 01 64-49	SCREW	1	
37	576 21 50-01	KIT	1	
38	545 03 05-01	SCREEN	1	34
39	574 03 15-02	KIT	1	33, 34, 39, 40
40	545 00 80-84	O-RING - FUEL CAP (KIT)	1	
41	530 01 58-97	SCREW	1	
42	545 04 67-01	IGNITION MODULE	1	
43	530 03 92-27	SHORTING LEAD	1	
44	530 01 64-56	SCREW	1	
45	530 01 64-63	WASHER	1	
46	530 09 41-89	WASHER	1	
47	530 01 58-05	SCREW	1	
48	530 01 57-74	SCREW	1	
49	530 01 57-68	NUT	1	
50	530 01 64-56	SCREW	1	
51	545 20 52-01	FAN HOUSING	1	
52	530 15 00-39	CLUTCH DRUM	1	
53	545 06 44-01	CLUTCH	1	
54	530 05 78-52	RING	1	
55	530 03 92-42	FLYWHEEL	1	
56	545 19 56-01	CRANKCASE-CAST	1	
57	545 01 34-01	BEARING	1	
58	545 19 52-02	ASSY-CRANKSHAFT	1	
59	530 01 51-62	CIRCLIP	1	
60	530 01 92-83	PISTON RING	1	
61	545 00 80-82	KIT	1	59, 60
62	545 00 80-84	O-RING - FUEL CAP (KIT)	1	
63	530 01 58-97	SCREW	1	
64	545 08 18-48	KIT - CARBURETOR	1	3, 4, 5

Ref	Part No.	Description	QTY	KIT
65	576 45 90-01	BASE	1	
66	530 05 78-46	COVER	1	
67	530 05 97-96	KNOB ASSY AIRBOX COVER	1	
68	545 00 80-84	O-RING - FUEL CAP (KIT)	1	5, 7, 10, 11, 17, 40, 62
69	545 00 80-85	KIT DECAL	1	

SHAFT & HANDLE



⚠ WARNING

All repairs, adjustments and maintenance not described in the Operator's Manual must be performed by Qualified Service Personnel.

Ref	Part No.	Description	QTY	KIT
1	576 13 94-01	ASSEMBLY	1	
2	545 22 30-01	HOUSING RIGHT	1	
3	530 01 64-49	SCREW	1	
4	530 01 58-05	SCREW	1	
5	530 01 64-54	RETURN SPRING	1	
6	574 35 53-01	TRIGGER	1	
7	574 35 54-01	THROTTLE	1	
8	545 22 32-01	HOUSING LEFT	1	
9	545 04 93-09	SWITCH MOMENTARY	1	
10	530 01 58-20	SCREW	1	
11	545 04 22-01	HANDLE	1	
12	575 75 55-01	KIT	1	20, 21, 22, 24
13	530 05 91-85	CLAMP	1	
14	530 01 61-52	WING NUT	1	
15	545 00 75-07	SHAFT	1	
16	545 03 09-01	PROTECTOR	1	17, 18, 19
17	530 05 22-86	BLADE	1	
18	530 01 58-14	SCREW	1	

Ref	Part No.	Description	QTY	KIT
19	530 01 57-71	SCREW	1	
20	530 05 75-54	BRACKET	1	
21	530 01 60-14	SCREW	1	
22	545 00 39-02	SCREW	1	
23	537 23 49-01	DRIVER ASSY	1	
24	530 09 62-95	BEVEL GEAR	1	
25	537 33 83-06	TRIMMER HEAD	1	