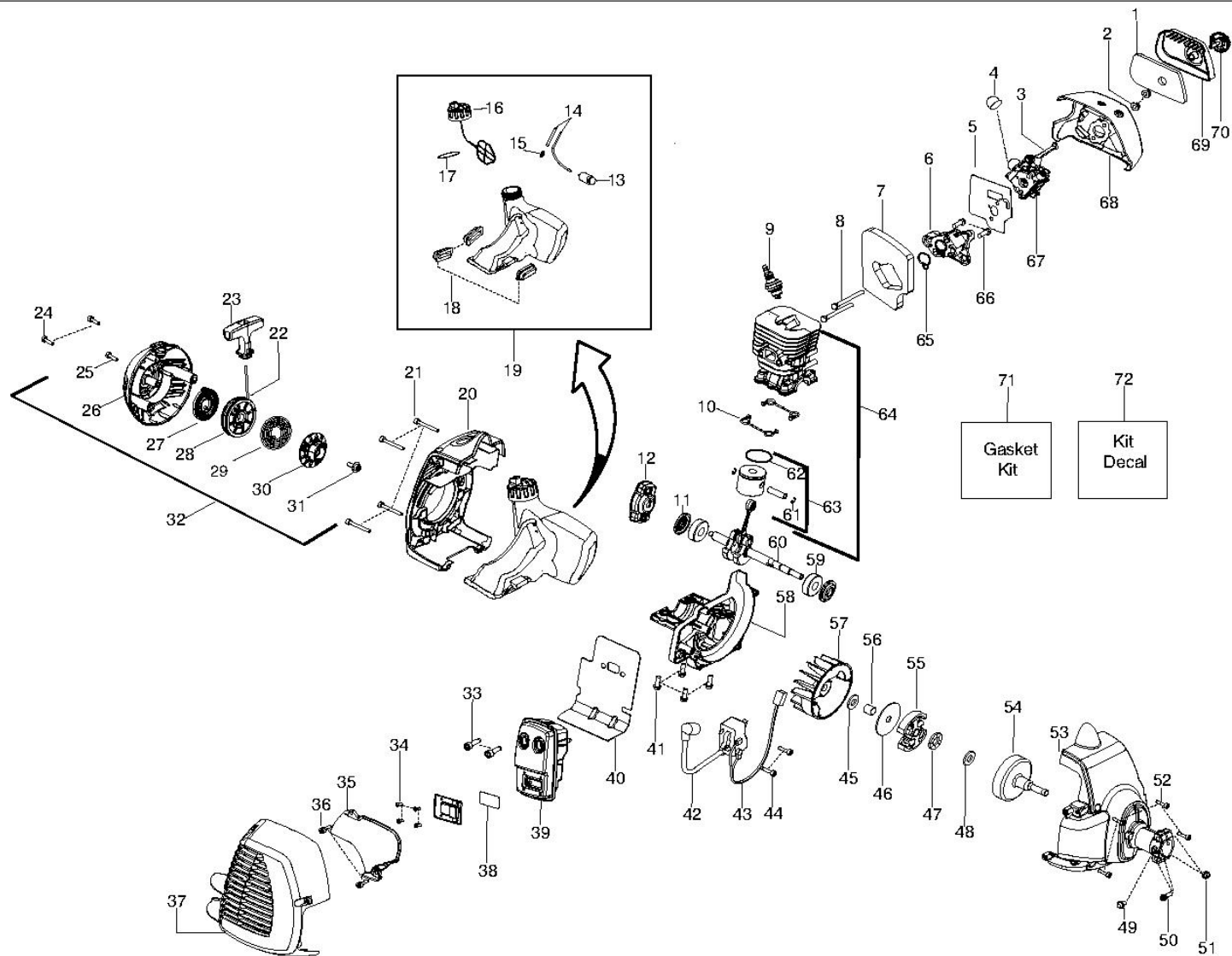


ENGINE



Ref	Part No.	Description	QTY	KIT
1	530 15 02-53	AIR FILTER	1	
2	530 01 61-01	NUT	1	
3	530 05 78-44	LEVER	1	
4	530 05 87-09	PRIMER BULB	1	
5	545 00 80-86	KIT-CARB. GASKET	1	7,65
6	530 03 55-96	SPACER	1	
7	545 00 80-84	O-RING - FUEL CAP (KIT)	1	
8	530 01 64-00	BOLT	1	
9	952 03 02-01	SPARK PLUG	1	
10	545 00 80-84	O-RING - FUEL CAP (KIT)	1	
11	545 00 80-84	O-RING - FUEL CAP (KIT)	1	
12	503 87 33-05	STARTER PAWL BRIDGE	1	
13	530 09 56-46	FILTER	1	
14	530 06 95-99	HOSE	1	15
15	530 02 38-77	NIPPLE	1	

Ref	Part No.	Description	QTY	KIT
16	530 15 03-50	TANK CAP	1	17
17	545 00 80-84	O-RING - FUEL CAP (KIT)	1	
18	530 05 97-80	INSULATOR	1	
19	545 18 08-70	KIT-FUEL TANK ASSY.	1	13, 14, 15, 16, 17, 18
20	576 38 21-01	KIT	1	
21	530 01 64-48	SCREW	1	
22	545 00 80-79	KIT-ROPE	1	
23	545 04 32-05	HANDLE	1	
24	530 01 64-26	SCREW	1	
25	530 01 64-49	SCREW	1	
26	576 38 21-01	KIT	1	
27	545 00 80-87	SPRING	1	
28	545 00 80-78	KIT-STARTER PULLEY	1	
29	544 03 88-02	SPRING	1	
30	544 03 87-02	DRIVER	1	
31	530 01 64-68	SCREW	1	
32	576 36 83-01	ASSEMBLY	1	22, 23, 25-31
33	530 05 89-82	BOLT	1	
34	530 01 52-41	SCREW	1	
35	530 15 04-40	PROTECTOR	1	
36	530 01 64-49	SCREW	1	
37	576 21 50-01	KIT	1	
38	545 03 05-01	SCREEN	1	34
39	574 03 14-01	KIT	1	33, 34, 38, 40
40	545 00 80-84	O-RING - FUEL CAP (KIT)	1	
41	530 01 58-97	SCREW	1	
42	545 04 67-01	IGNITION MODULE	1	
43	530 03 92-27	SHORTING LEAD	1	
44	530 01 64-56	SCREW	1	
45	530 01 64-63	WASHER	1	
46	530 09 41-89	WASHER	1	
47	545 17 34-01	BEARING - THRUST	1	
48	530 01 64-20	WASHER - THRUST	1	
49	530 01 58-05	SCREW	1	
50	530 01 57-74	SCREW	1	
51	530 01 57-68	NUT	1	
52	530 01 64-56	SCREW	1	
53	545 20 52-01	FAN HOUSING	1	
54	530 15 00-39	CLUTCH DRUM	1	
55	530 05 51-22	CLUTCH ASSY	1	
56	530 05 78-52	RING	1	
57	530 03 92-42	FLYWHEEL	1	
58	545 19 56-01	CRANKCASE-CAST	1	
59	545 01 34-01	BEARING	1	
60	545 19 52-02	ASSY-CRANKSHAFT	1	
61	530 01 51-62	CIRCLIP	1	
62	530 01 92-83	PISTON RING	1	
63	545 08 18-14	KIT	1	61, 62
64	545 00 80-83	KIT-PISTON/CYL.	1	63

Ref	Part No.	Description	QTY	KIT
65	545 00 80-84	O-RING - FUEL CAP (KIT)	1	
66	530 01 58-97	SCREW	1	
67	545 08 18-47	KIT - CARBURETOR	1	3, 4, 5
68	576 45 90-01	BASE	1	
69	530 05 78-46	COVER	1	
70	530 05 97-96	KNOB ASSY AIRBOX COVER	1	
71	545 00 80-84	O-RING - FUEL CAP (KIT)	1	5, 7, 10, 11, 17, 40, 65
72	545 00 33-52	KIT	1	

Ref	Part No.	Description	QTY	KIT
19	537 41 90-01	SWITCH	1	
20	537 16 07-03	STARTER THROTTLE LOC	1	
21	537 17 43-01	SPRING	1	
22	503 22 10-13	NUT	1	
23	506 49 51-01	THROTTLE LOCKOUT	1	
24	537 16 02-03	HANDLE HALF LEFT	1	
25	545 12 58-01	ASSEMBLY	1	
26	537 17 42-01	SPRING THROTTLE TRIG	1	
27	506 49 50-01	THROTTLE CONTROL	1	
28	503 21 66-18	SCREW IH SCT	1	
29	503 20 07-35	SCREW IH SCFM	1	
30	537 16 03-01	HANDLE HALF RIGHT	1	
31	545 00 75-07	SHAFT	1	
32	537 21 63-01	HARNES	1	
33	545 03 09-01	PROTECTOR	1	34, 35, 43
34	530 05 22-86	BLADE	1	
35	530 01 58-14	SCREW	1	
36	504 00 13-03	GRASS BLADE	1	
37	503 89 01-01	SUPPORT CUP	1	
38	537 28 56-01	SUPPORT FLANGE	1	
39	503 85 63-01	NUT BLADE	1	
40	530 01 60-14	SCREW	1	
41	545 00 39-02	SCREW	1	
42	537 23 49-01	DRIVER ASSY	1	
43	530 01 57-71	SCREW	1	
44	530 05 75-54	BRACKET	1	
45	502 28 59-01	STOP	1	
46	530 09 62-95	BEVEL GEAR	1	
47	537 33 83-06	TRIMMER HEAD	1	