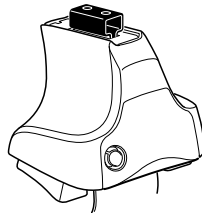
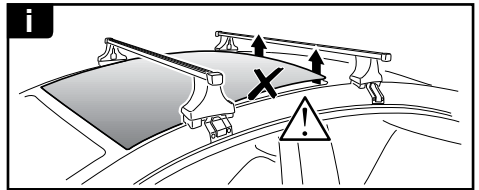
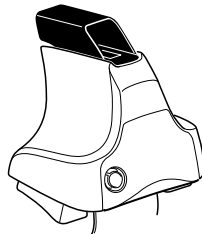
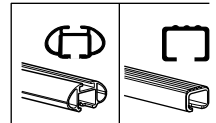


Kit 1566

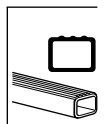
TOYOTA Prius, 5-dr Hatchback w/ Solar Panel, *10-
TOYOTA Prius, 5-dr Hatchback, 09- / *10-
* North America



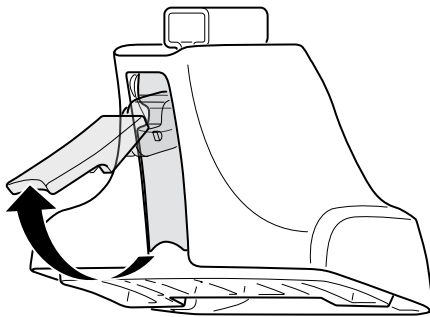
754 Rapid System
480R Rapid Traverse (North America)



480 Traverse (North America)



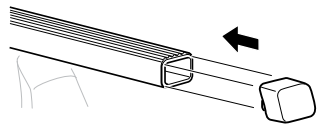
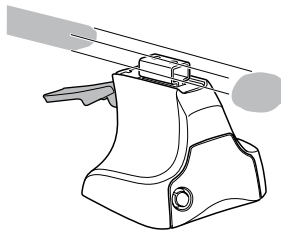
1



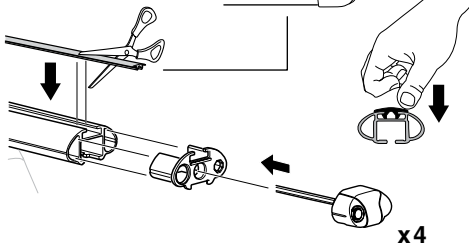
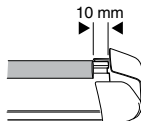
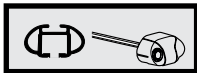
2



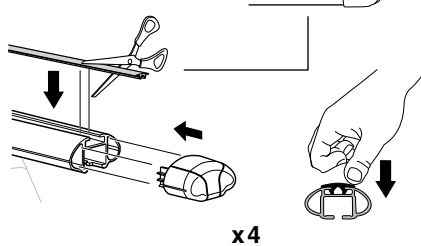
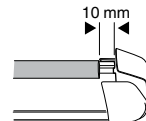
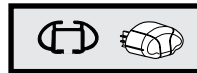
754 Rapid System
480R Rapid Traverse
(North America)



x4



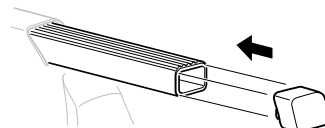
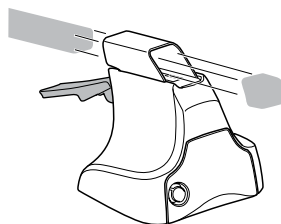
x4



x4

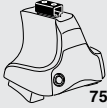


480 Traverse
(North America)

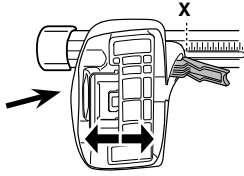


x4

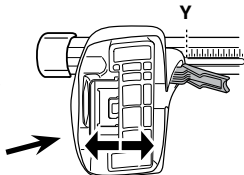
3



754 Rapid System



	X
TOYOTA Prius, 5-dr Hatchback w/ Solar Panel, *10-	38
TOYOTA Prius, 5-dr Hatchback, 09- / *10-	39



	Y
TOYOTA Prius, 5-dr Hatchback w/ Solar Panel, *10-	34
TOYOTA Prius, 5-dr Hatchback, 09- / *10-	35,5

3



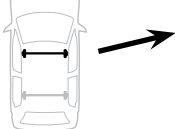
480R Rapid Traverse



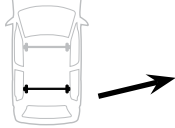
480 Traverse



(North America)

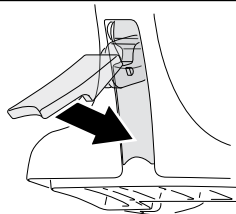


	X inch	X mm
TOYOTA Prius, 5-dr Hatchback w/ Solar Panel, *10-	40 1/2"	1030 mm
TOYOTA Prius, 5-dr Hatchback, 09- / *10-	41"	1041 mm



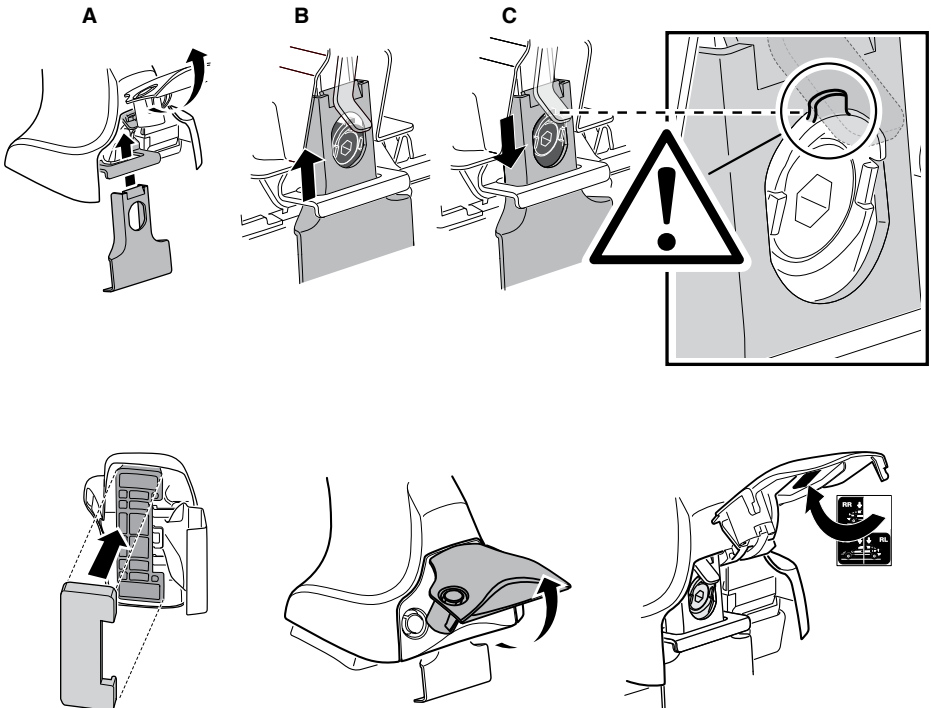
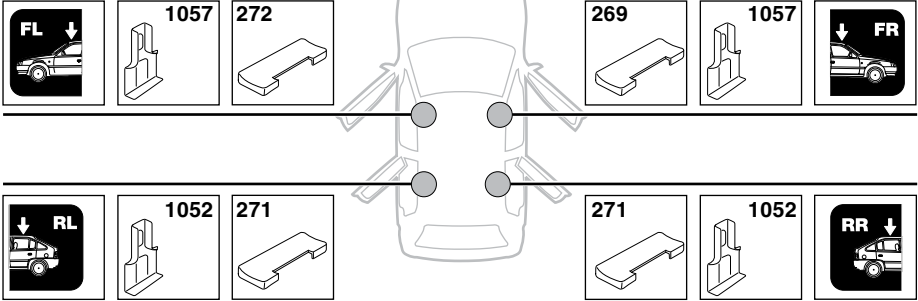
	Y inch	Y mm
TOYOTA Prius, 5-dr Hatchback w/ Solar Panel, *10-	39"	990 mm
TOYOTA Prius, 5-dr Hatchback, 09- / *10-	39 5/8"	1006 mm

4

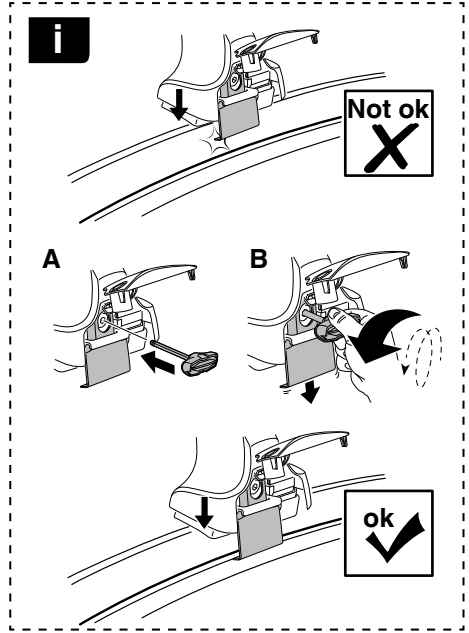
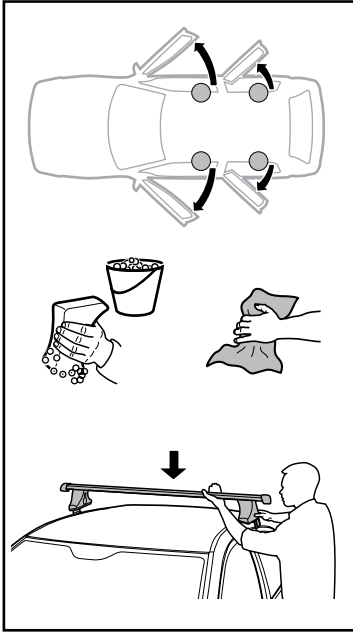


5

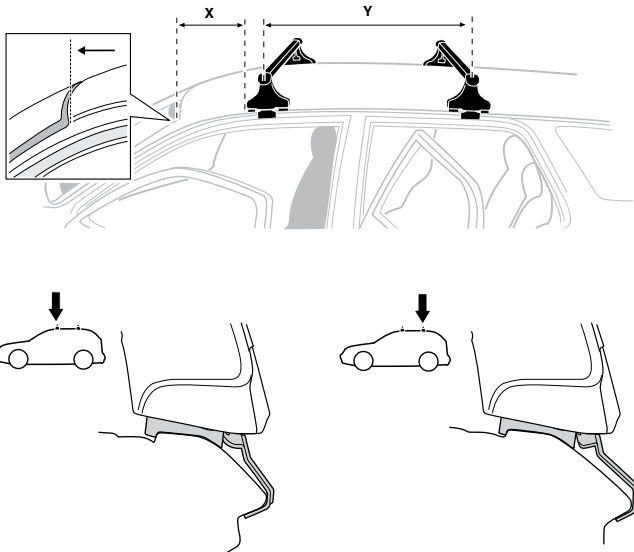
TOYOTA Prius, 5-dr Hatchback w/ Solar Panel, *10-
TOYOTA Prius, 5-dr Hatchback, 09- / *10-



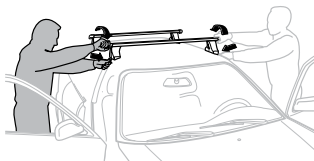
6



	X mm	Y mm	X inch	Y inch
TOYOTA Prius, 5-dr Hatchback w/ Solar Panel, *10-	280 mm	673 mm	11 "	26 1/2 "
TOYOTA Prius, 5-dr Hatchback, 09- / *10-	310 mm	700 mm	12 1/4 "	27 1/2 "



7



GB/US Tighten alternately
 D Die Schrauben abwechselnd anziehen
 F Serrer alternativement chaque côté
 NL Afwisselend aan de linker- en de rechterkant aandraaien
 I Alternare il serraggio delle viti
 E Apertar alternativamente
 PT Aperte alternadamente
 S Dra åt växelvis
 FIN Kierrä vuorotellen
 EST Pinguldage vaheldumisi
 LAT Pieļieciet pamišus
 LIT Užsukinėkite pakaitomis
 PL Śruby dokręcaj naprzemiennie
 RU Затягивайте попеременно

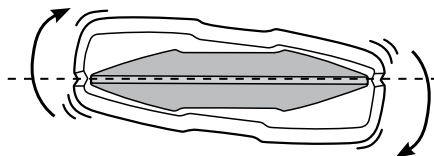
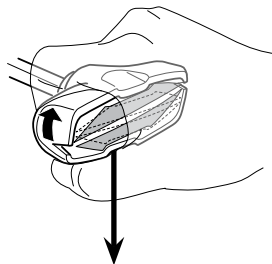
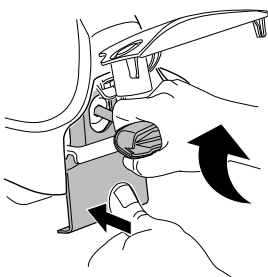
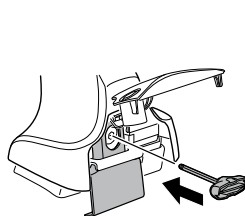
CZ Pokręťta bagażnika dokręcaj dokręcaj naprzemiennie.
 SK Dofahajte striedavo
 SLO Privijajte izmenično.
 HR Naizmjerno zategnite
 HU Egymástól függetlenül szorítandó
 GR Σφιγίγες εναλλάξ
 TR Dönüşümlü sıkın

中文 交替拧紧

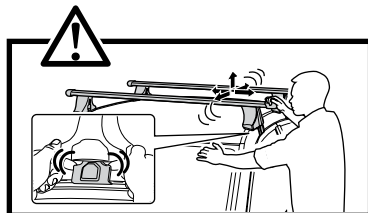
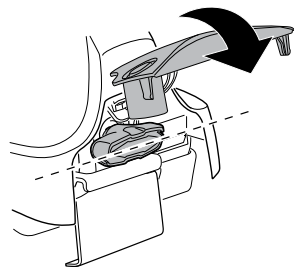
한국어 번갈아 가며 조이십시오.

日本語 交互に締め付けてください。

ไทย ชันในแบบสลับ



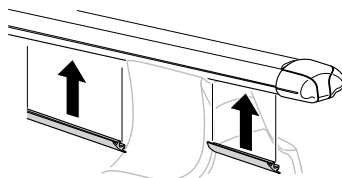
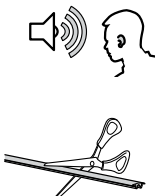
≈ 3 Nm

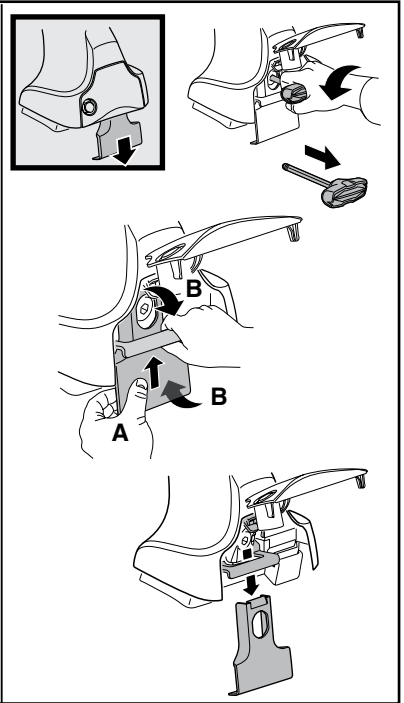
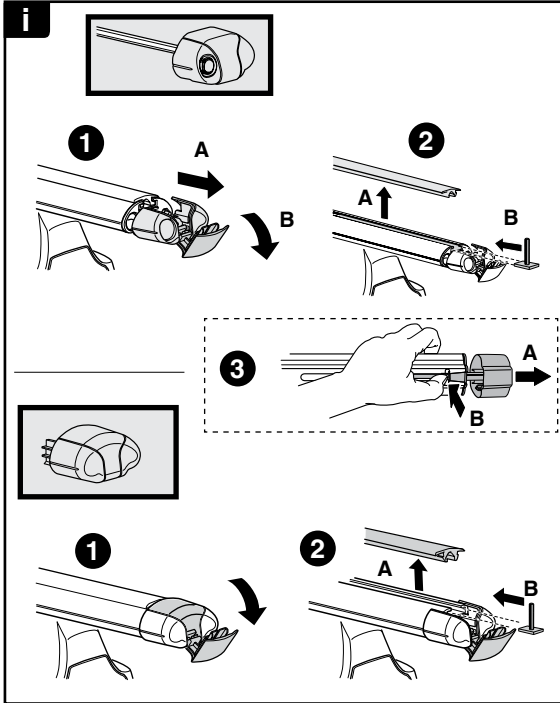
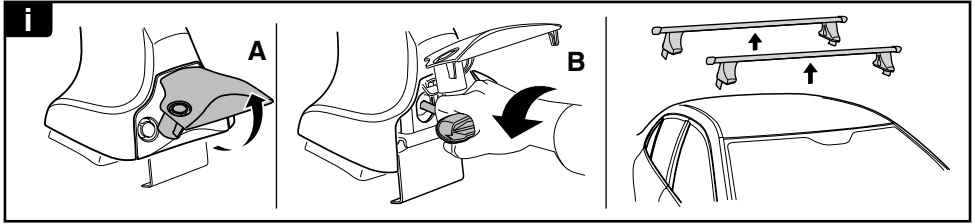


8

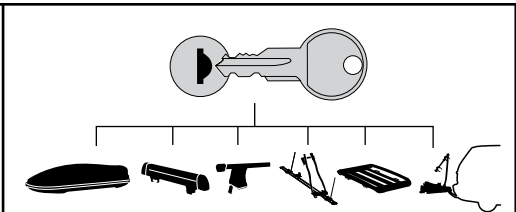


x1
17 mm

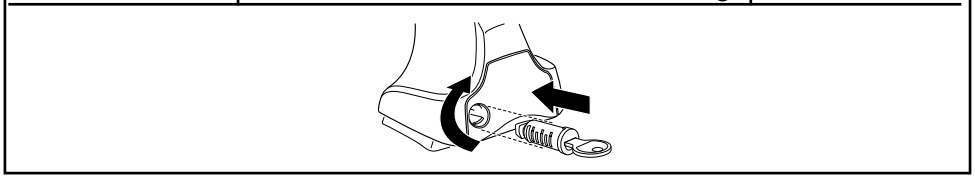




THULE
SWEDEN
**ONE
KEY
SYSTEM**



		(x4)
		(x6)
		(x8)
NA		(x10)
EUR		(x12)
ASIA		



WW ▶ Thule Sweden AB, Box 69, 330 33 Hillerstorp, SWEDEN
NA ▶ Thule Inc., 42 Silvermine Road, Seymour, Connecticut 06483, USA

info@thule.com
customer.service@thule.com

www.thule.com