

PARTS CATALOG



Generator

Model

MGE12000 J 51

Spec. No. RGV12K37040

Spec. No. EH650DC2770

ISSUE EMD-GP6576

ISSUE DATE	2008.12
------------	---------

CONTENTS

ENGINE PARTS

		FIG.
1	CRANKCASE	100
2	CRANK, PISTON	200
3	INTAKE, EXHAUST	300,315
4	GOVERNOR	400
5	COOLING, STARTING	500
6	FUEL, LUBRICANT	600,640
7	ELECTRIC DEVICE	700,730

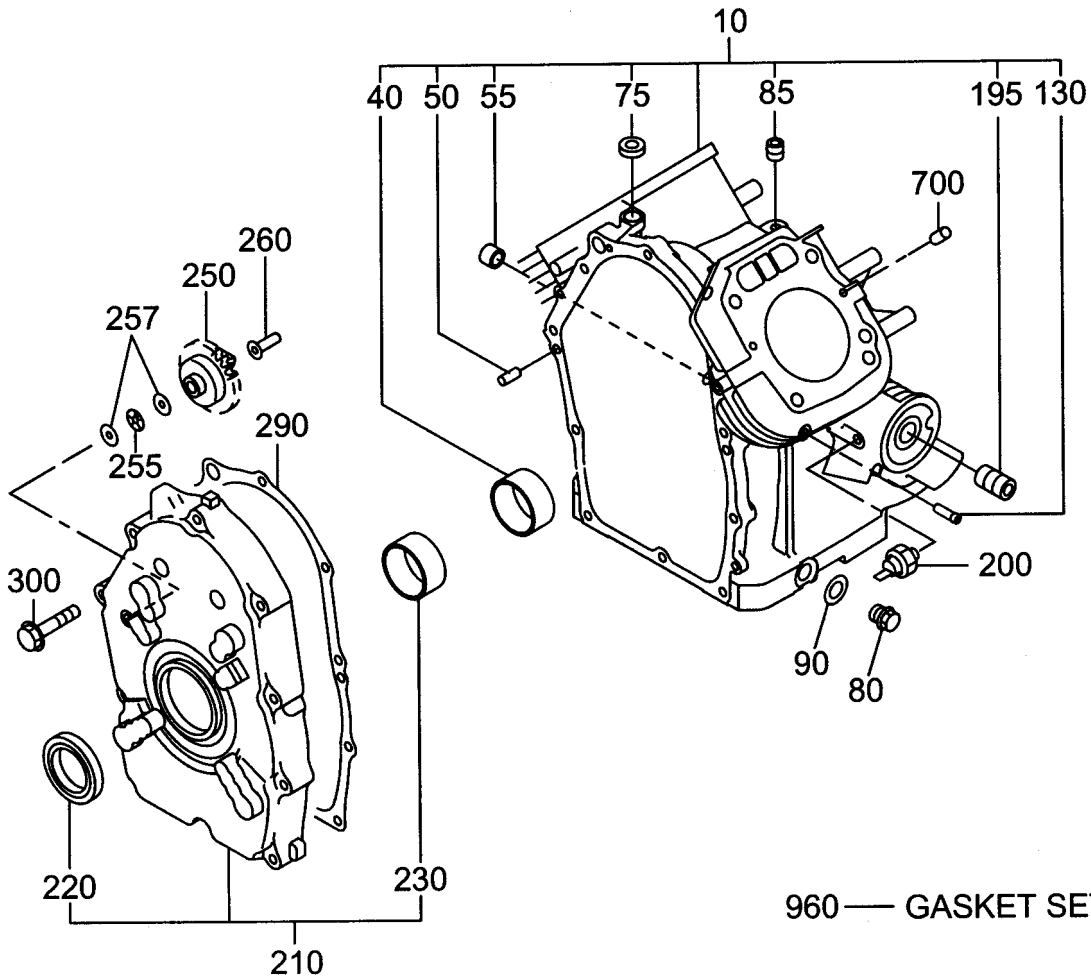
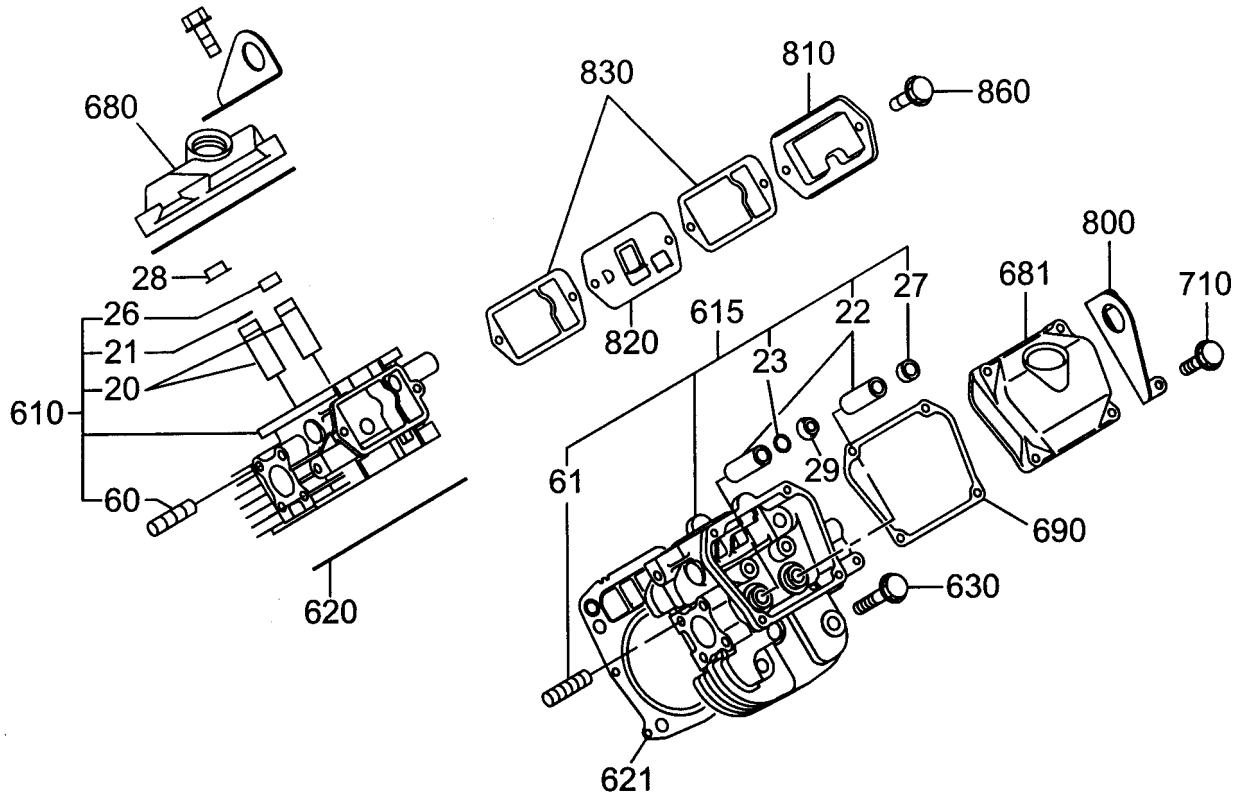
GENERATOR PARTS

22	GENERATOR	2200
23	PIPE FRAME	2300
24	CONTROL BOX	2400
26	FUEL TANK	2600
29	ACCESSORIES	2900
30	WHEEL	3000

Table of abbreviations

ABBREVIATIONS	DESCRIPTION
A	AMPERE
AC	AIR CLEANER
AY	ASSEMBLY
B	BREADTH
BB	BALL BEARING
CD	CENTER DISTANCE
CP	COMPLETE
D	DIAMETER
EX	EXPORT
EX	EXHAUST
FIG	FIGURE
FR	FRONT
H	HEIGHT
HZ	HERTZ
IN	INCH
IN	INTAKE
L	LITER
L	LENGTH
LH	LEFT HAND
MG	MAGNETIC
N	NUMBER
N R Y	NEW ROBIN YELLOW
OS	OIL SENSOR
O.S.	OVER SIZE
P	PITCH
PD	PITCH DIAMETER
PTO	POWER TAKE OFF
REF	REFERENCE
RH	RIGHT HAND
RR	REAR
ST	STARTER
STD	STANDARD
SW	SPRING WASHER
SW	SWITCH
T	THICKNESS
TH	THROTTLE
UN	UNIT
U.S.	UNDER SIZE
V	VOLTAGE
W	WASHER
W	WATT
W	WIDTH
W/	WITH
W/O	WITHOUT

FIG. 100



1 CRANK CASE GROUP

REF.	PART NUMBER	PART NAME	QTY	R E M A R K S	CODE NO.	INTERCHANGE P/NO.	UNIT P	FIG.
10	KY2631011101	CRANK CASE CP	1		-			100
20	KY2631421103	VALVE GUIDE	2	6DX11DX32.5L	-			100
21	KY0565100050	CLIP	1	10.7DX0.9D	-			100
22	KY2631421103	VALVE GUIDE	2	6DX11DX32.5L	-			100
23	KY0565100050	CLIP	1	10.7DX0.9D	-			100
26	KY13207AA050	SEAL-INT VALVE	1		-			100
27	KY13207AA050	SEAL-INT VALVE	1		-			100
28	KY2633534103	RETAINER PLATE	1	11DX17.3DX27DX4.7H	-			100
29	KY2633534103	RETAINER PLATE	1	11DX17.3DX27DX4.7H	-			100
40	KY2631580203	MAIN BEARING	1	45DX50DX23B W/STOPER	-			100
50	KY0310080100	DOWEL PIN	2		7122-			100
55	KY2635560103	PIPE	2	11DX8.8DX8L	6910-			100
60	KY0105080290	STUD	4	M8X1.25X30L	-			100
61	KY0105080290	STUD	4	M8X1.25X30L	-			100
75	KY0440080010	OIL SEAL	1	8DX14DX4B	-			100
80	KY0401140030	PLUG	2	M14X1.5X20DX12L	-			100
85	KY2351542103	BLIND PLUG	1	PT1/8X8L	-			100
90	KY0211140020	GASKET	2	14.1DX19DX2.3T	-			100
130	KY1596540103	PIPE (PULSE)	1	4DX6DX25L	-			100
195	KY2631590103	UNION	1	3/4X16UNFX30L	-			100
200	KY26376102H1	SWITCH OIL PRESSURE	1		-			100
210	KY2631110151	MAINBEARING COVER CP	1		-			100
220	KY0440420030	OIL SEAL	1	42DX60DX9B	-			100
230	KY2631580203	MAIN BEARING	1	45DX50DX23B W/STOPER	-			100
250	KY2634500301	GOVERNOR GEAR CP	1	52DX26T N=25	-			100
255	KY26346215A3	THRUST BEARING	1	6.4DX17.5DX2T	-			100
257	KY26346214A3	WASHER	2	6DX19DX1T	-			100
260	KY2774190103	GOVERNOR SLEEVE	1	6DX7.6DX16DX26L	-			100
290	KY26316002A3	GASKET (M.B COVER)	1	T=0.5	-			100
300	KY0110080220	FLANGE BOLT	10	M8X1.25X17DX45L	-			100
610	KY2631321101	CYLINDER HEAD 1 CP	1		-			100
615	KY2631331101	CYLINDER HEAD 2 CP	1		-			100
620	KY2631502121	GASKET 1 (CYL HEAD)	1		7047-			100
621	KY2631512111	GASKET 2 (CYL HEAD)	1		-			100
630	KY0110100070	FLANGE BOLT	8	M10X1.25X19DX65L	-			100
680	KY28015501A3	ROCKER COVER	1		-			100
681	KY26315501A3	ROCKER COVER	1		-			100
690	KY26316101A3	GASKET (ROCKER COVER)	2	T=0.4	-			100
700	KY0310060020	DOWEL PIN	4	6DX14.5L	-			100
710	KY0110060101	FLANGE BOLT	8	M6X1.0X13DX28L	-			100

FIG. 200

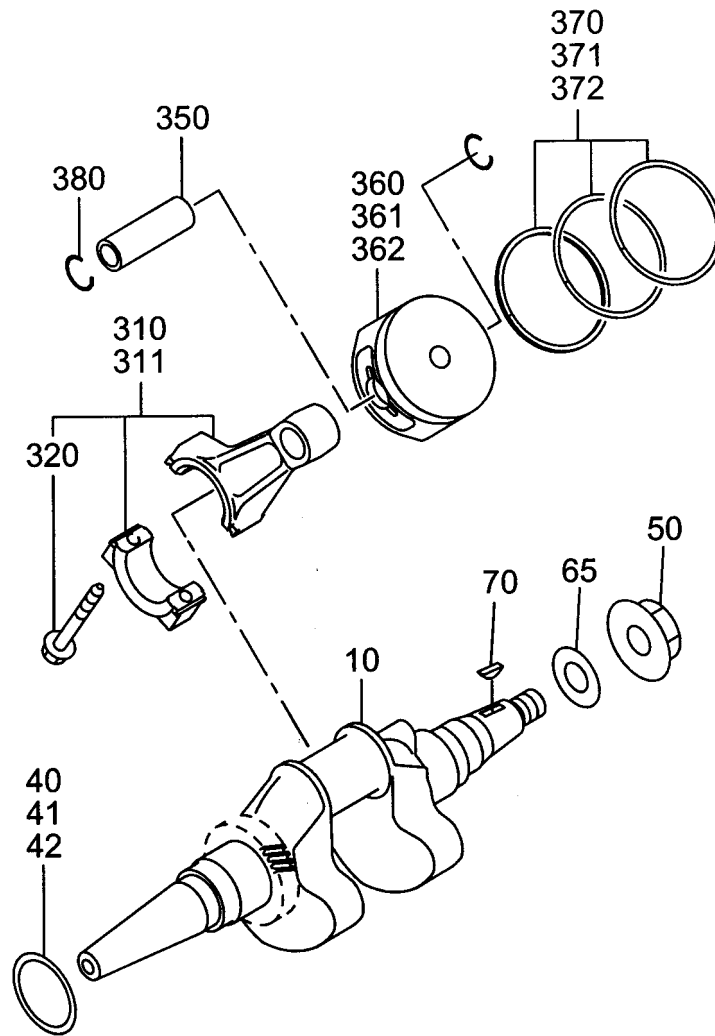


FIG. 300

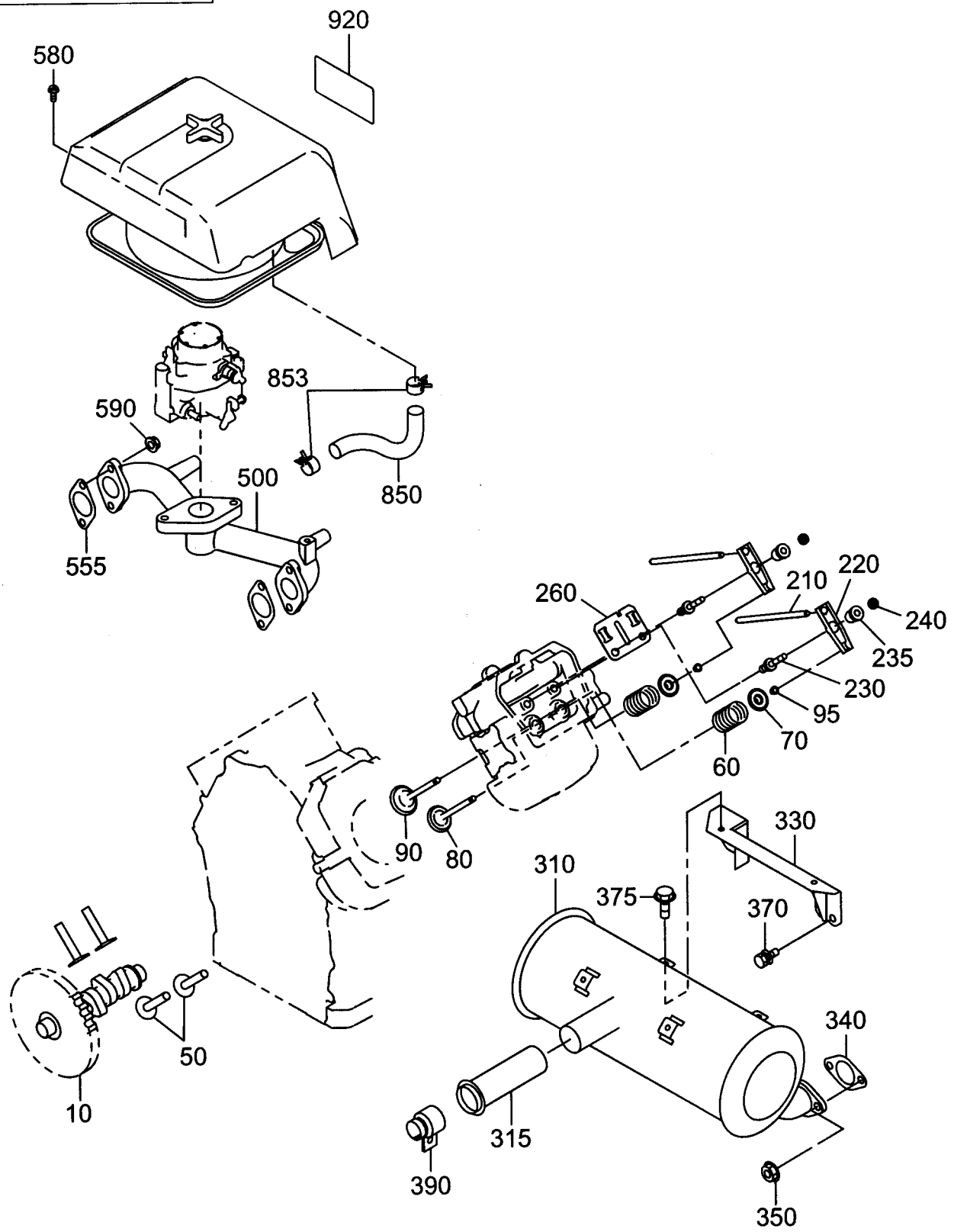


FIG. 315

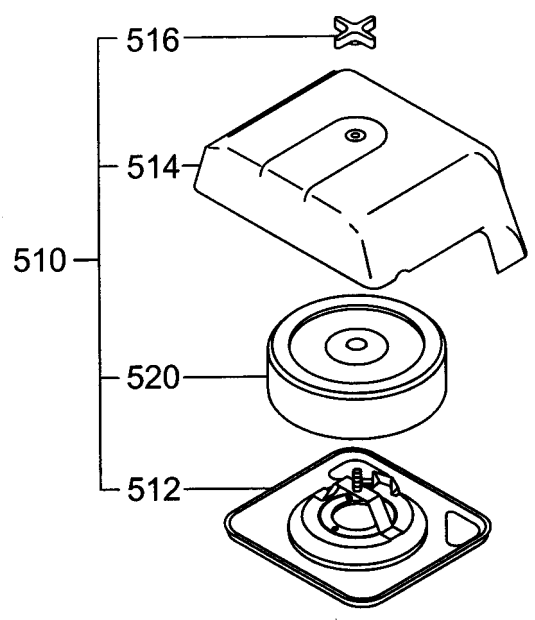


FIG. 400

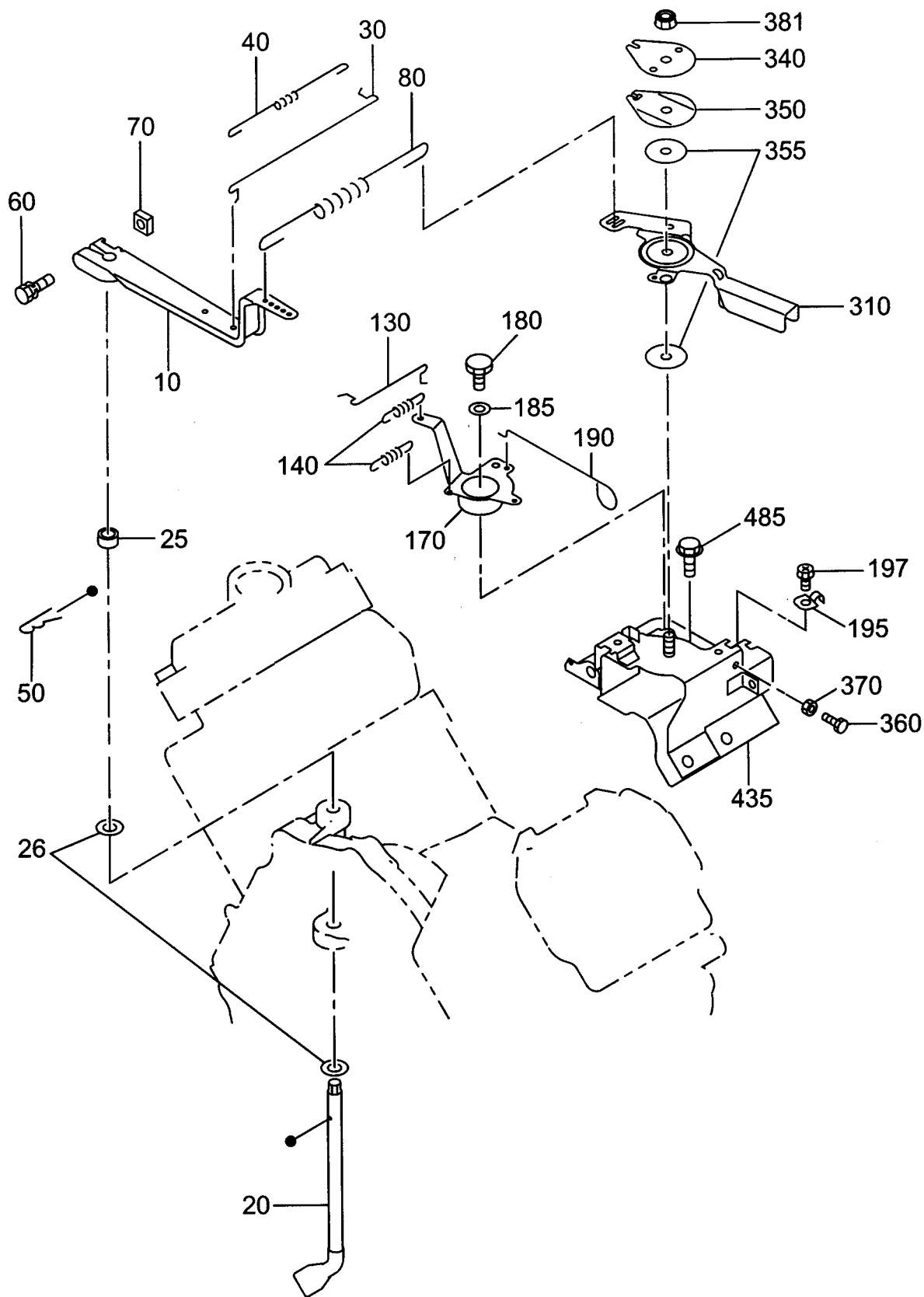


FIG. 500

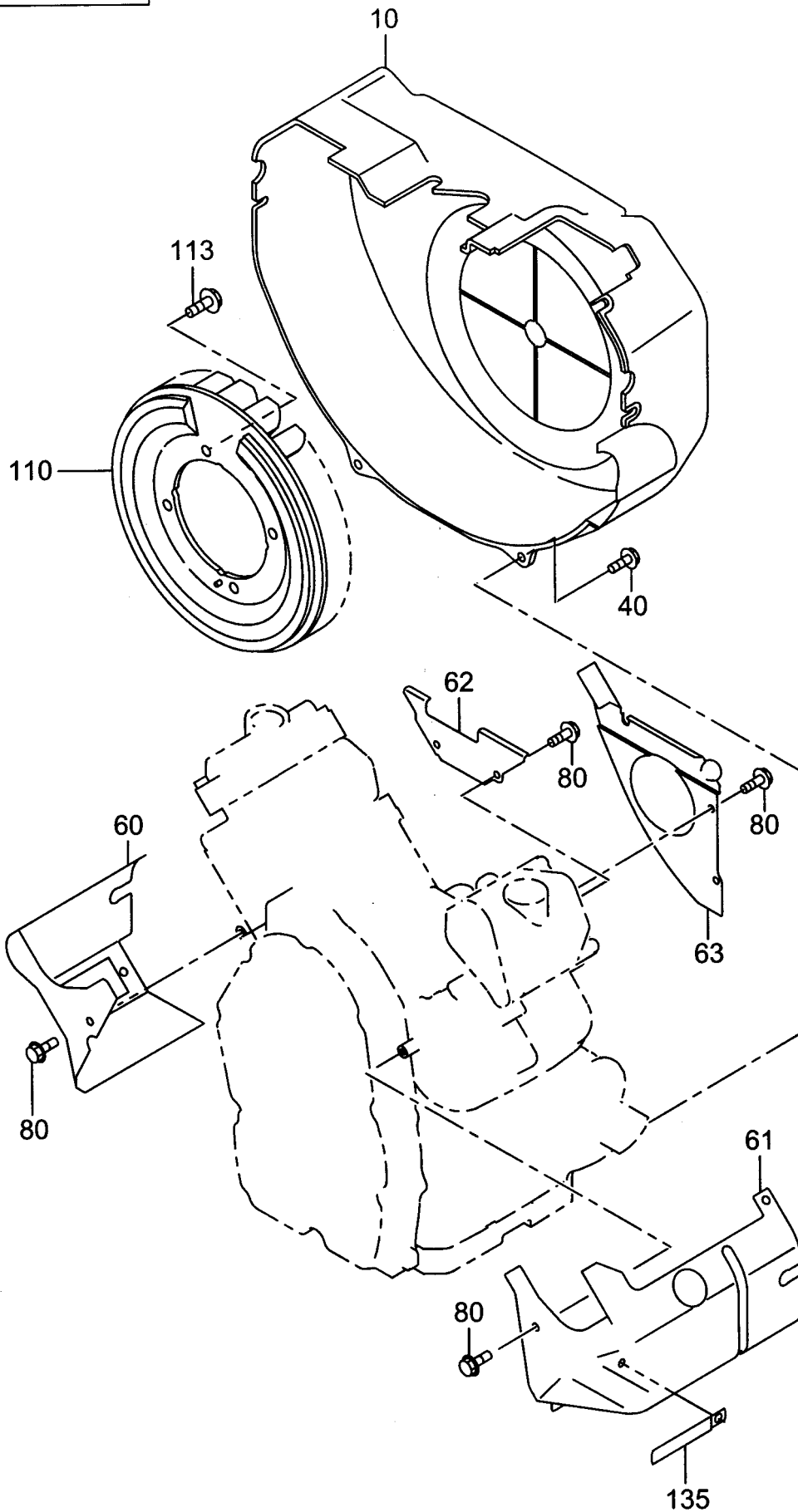


FIG. 600

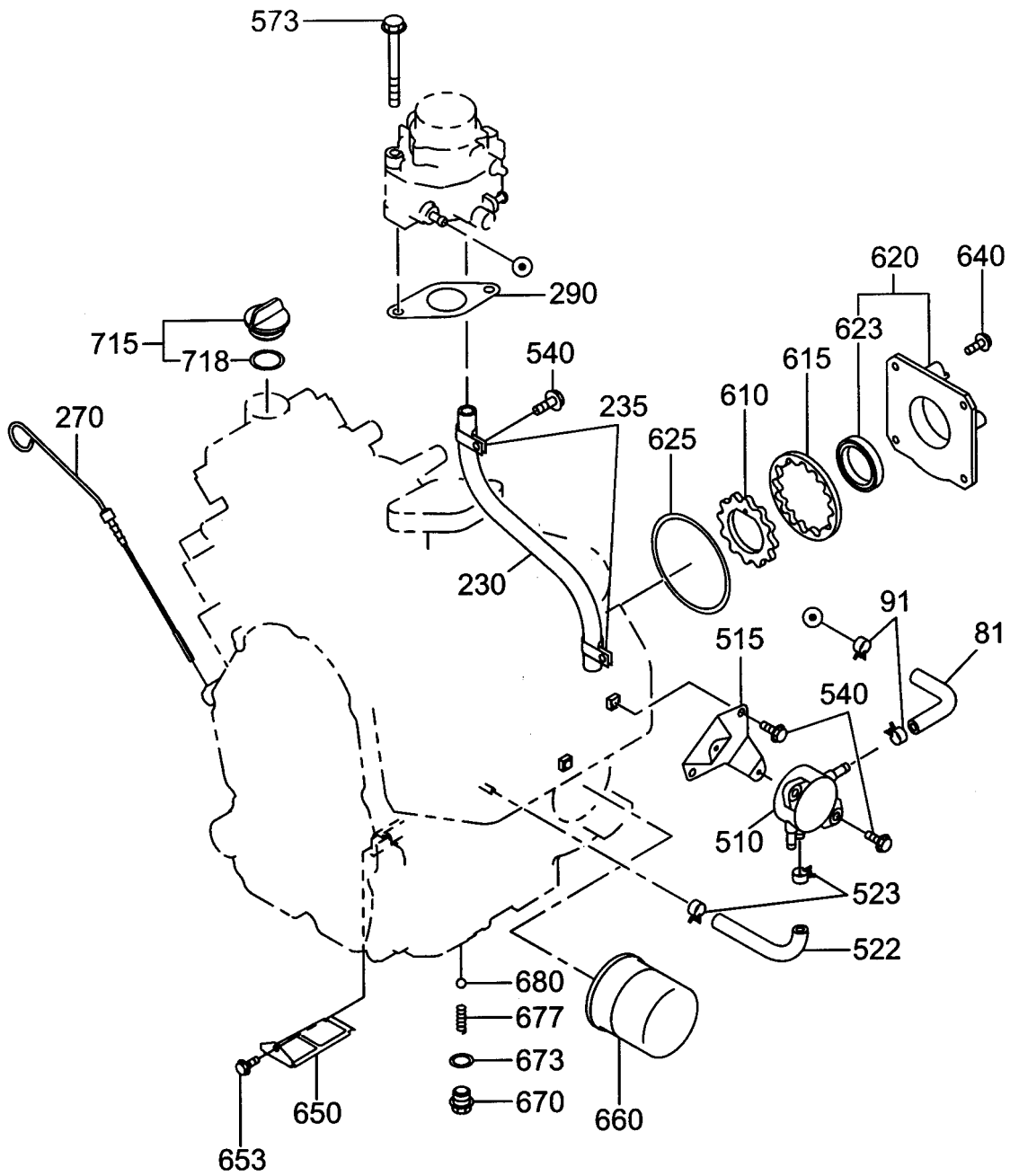


FIG. 640

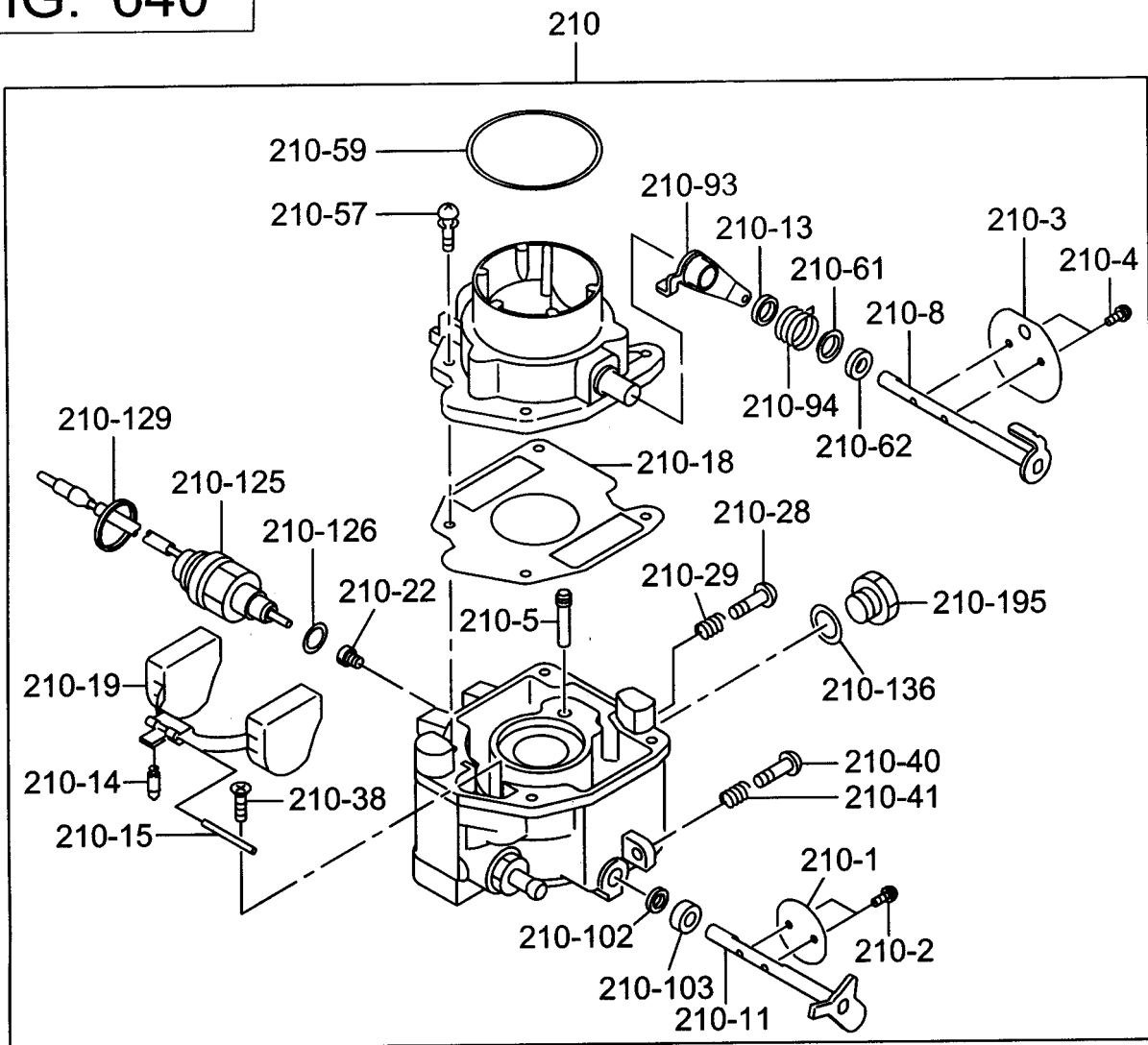


FIG. 700

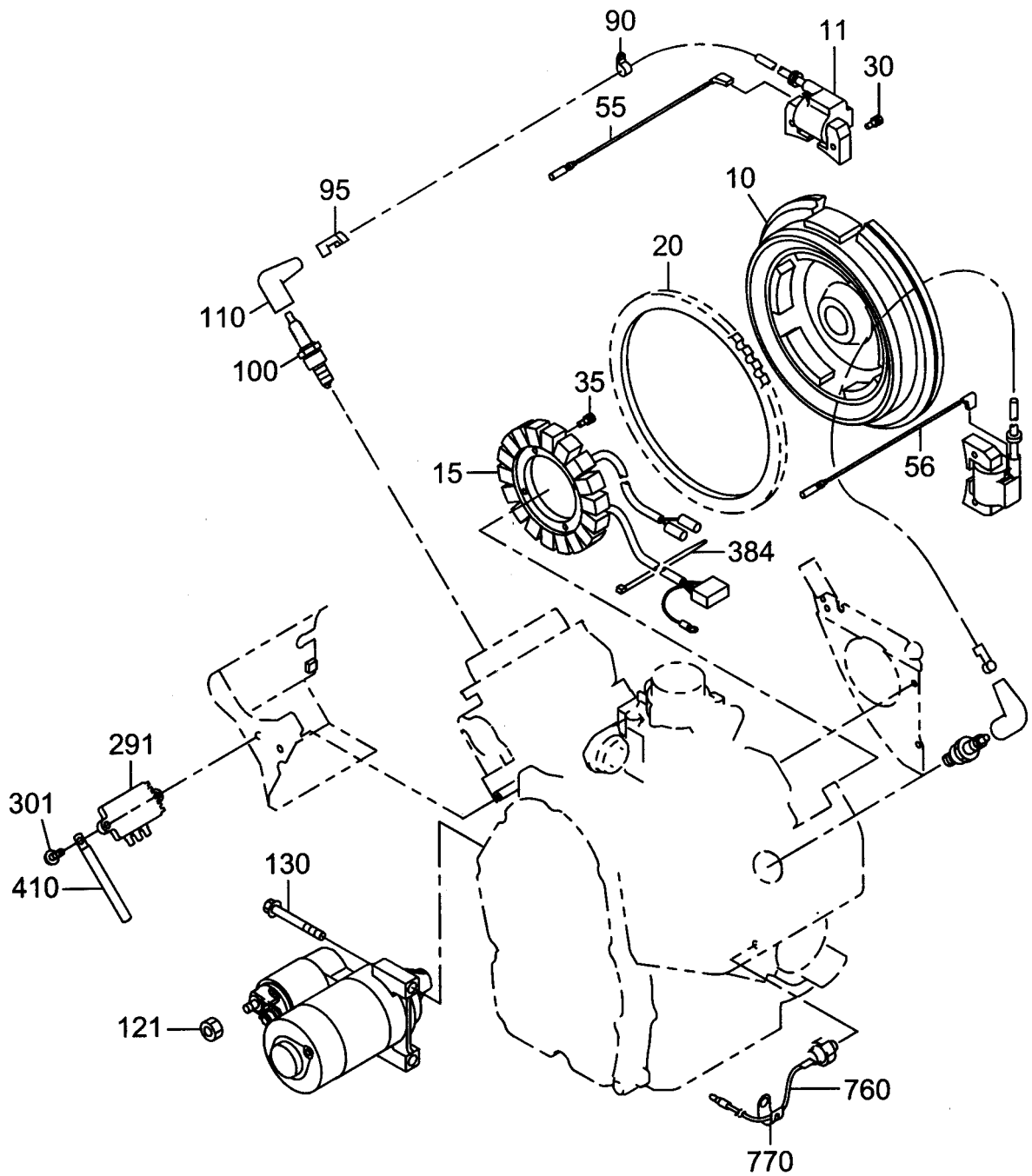


FIG. 730

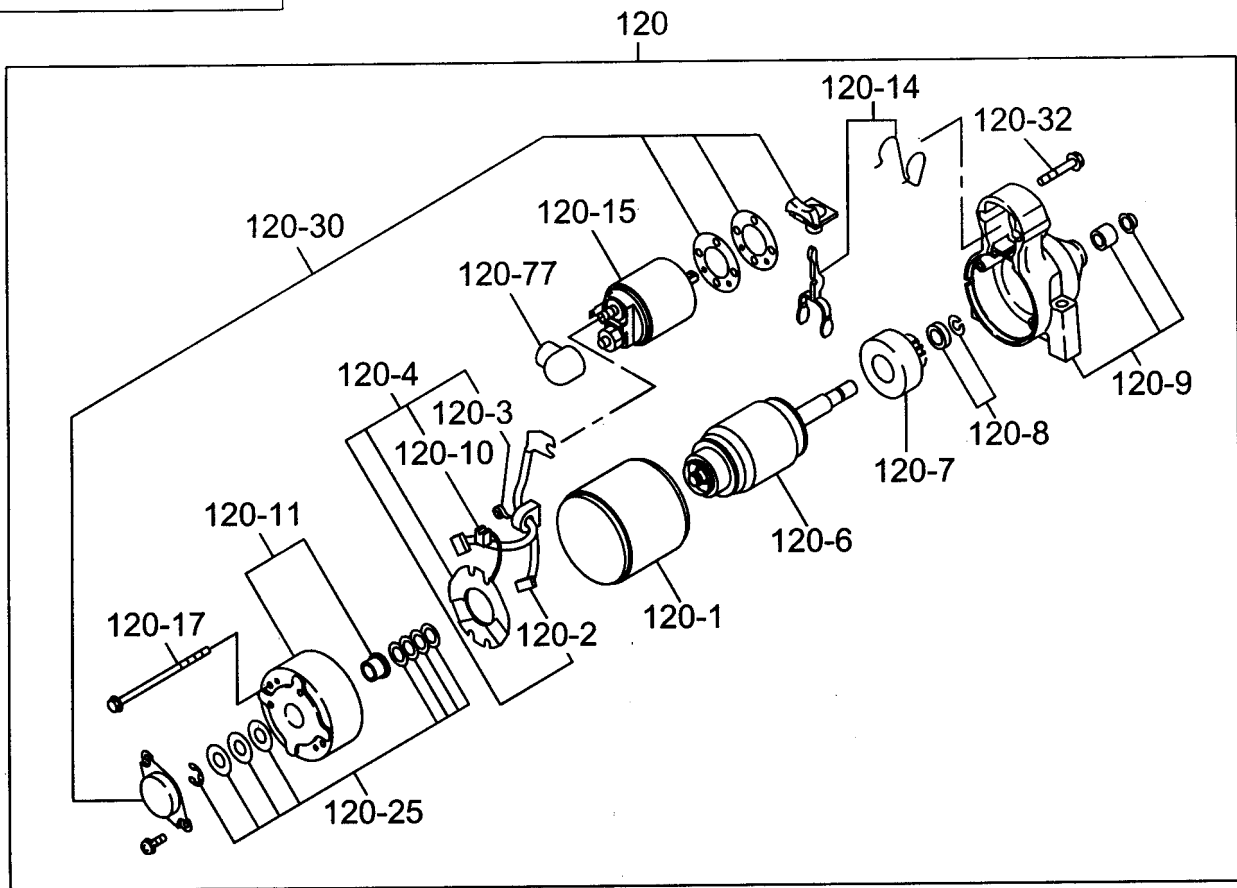
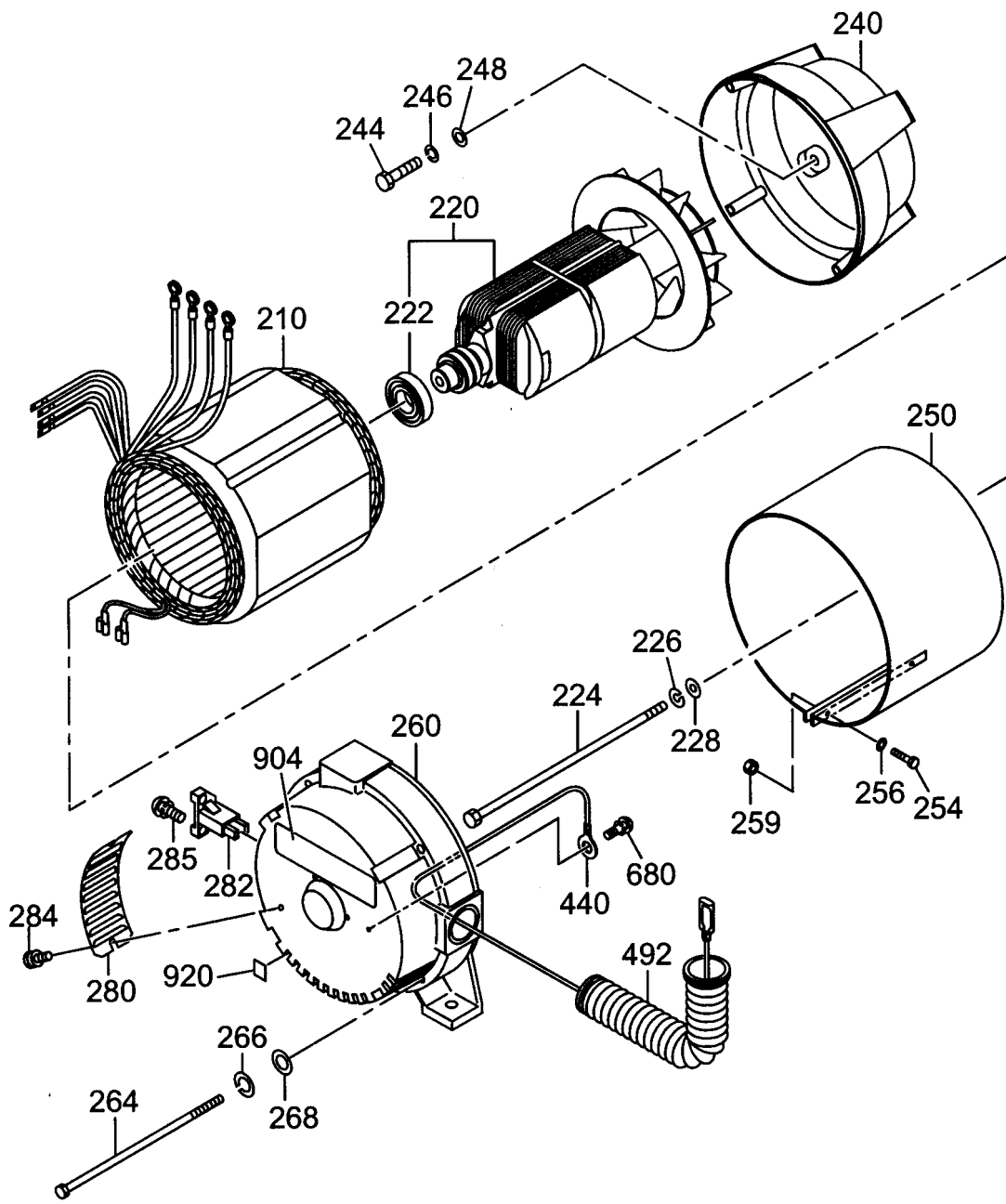


FIG. 2200



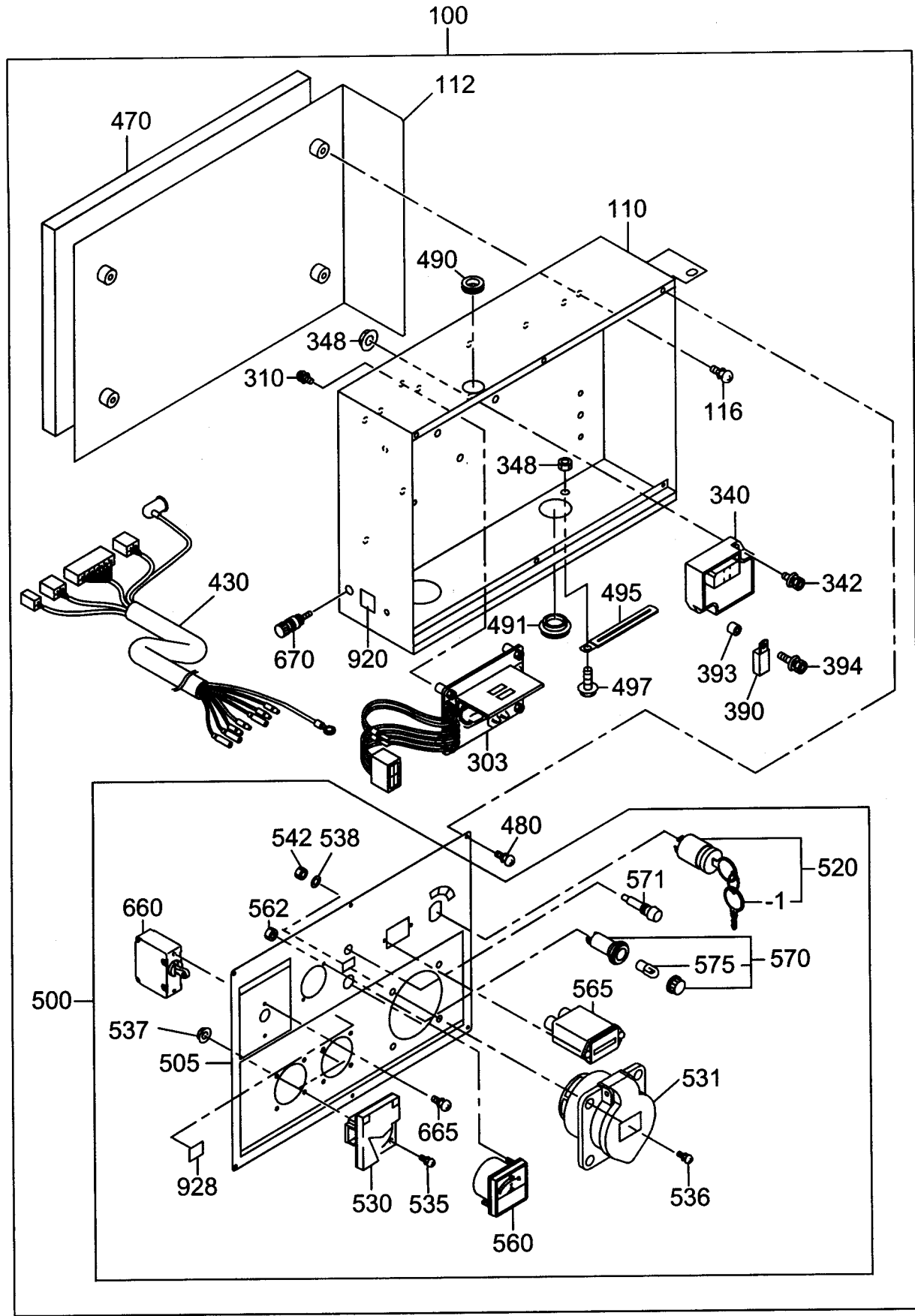
23 PIPE FRAME

REF.	PART NUMBER	PART NAME	QTY	REMARKS	CODE NO.	INTERCHANGE P/NO.	UNIT P	FIG.
10	KY31G6100501	PIPE FRAME CP	1		-			2300
210	KY31F6102401	BAFFLE PLATE	1		-			2300
215	KY31G6102401	COVER PLATE	1		-			2300
220	KY31G6102701	FRONT PLATE	1		-			2300
224	KY0110060020	FLANGE BOLT	4	M6X1.0X14DX12L	-			2300
225	KY35C7201403							
226	KY31G6200201	FLANGE BOLT	4		-			2300
228	KY31F7600101	SCREW & WASHER AY	2		-			2300
229	KY0110060020	FLANGE BOLT	2	M6X1.0X14DX12L	-			2300
230	KY31F6100201	GENERATOR BASE	1		-			2300
320	KY31F3500201	MOUNT CP	4		-			2300
330	KY0023810000	FLANGE NUT	8		-			2300
350	KY31F6102201	STOPPER PLATE	1		-			2300
358	KY0016610400	BOLT	1		-			2300
360	KY0032010000	SPRING WASHER	1		-			2300
362	KY0031010000	WASHER	3		-			2300
364	KY0021710000	NUT	1		-			2300
440	KY31F6201601	EARTH CORD	1		-			2300
495	KY0566000250	CLAMP	1	6.5DX10BX95LX0.6T	-			2300
497	KY0110060020	FLANGE BOLT	1	M6X1.0X14DX12L	-			2300
499	KY0023806000	FLANGE NUT	1		-			2300
680	KY3924998708	SCREW	1		-			2300
810	KY9782161120	ROD(BATTERY)	2		-			2300
815	KY31F3300101	BATTERY STAY CP	1		-			2300
820	KY0024106000	WING NUT	2		-			2300
832	KY31F7401621	WIRE CABLE SET	1		-			2300
833	KY31F7402201	BATTERY CODE (-)	1		-			2300
840	KY31F3200103	BATTERY TERMINAL	1		-			2300
843	KY0016608400	BOLT	1	M8X40L	-			2300
845	KY0023808000	FLANGE NUT	1		-			2300
849	KY0031008000	WASHER	1		-			2300
851	KY0566000170	CLAMP	1	8.5DX10BX95LX0.7T	-			2300
855	KY0563000060	WIRE BAND	5	4.7BX1.3TX120L	-			2300
902	KY31G8107103	LABEL (BRAND)	1		-			2300
920	KY30G4910608	LABEL EARTH	1		-			2300
946	KY0732005080	LABEL (F. STRAINER)	1		-			2300
954	KY31F9410103	LABEL (CHOKE)	1		-			2300
956	KY0732004860	LABEL (HOT&GAS)	1		-			2300

RGV10K76080

3-S0.50-22/38JISミツビシ

FIG. 2400



24 CONTROL BOX

REF.	PART NUMBER	PART NAME	QTY	REMARKS	CODE NO.	INTERCHANGE P/NO.	UNIT P	FIG.
100	KY31G7103200	CONTROL BOX AY	1		-			2400
110	KY31F7305701	CONTROL BOX UN	1		-			2400
112	KY31G7301001	PLATE	1		-			2400
116	KY3595992908	SCREW & WASHER AY	4		-			2400
303	KY31G7402401	AVR AY	1		-			2400
310	KY3924998608	SCREW	1	M4X6L	-			2400
340	KYKU31106221	ECU(O/S & R/C) CP	1		-			2400
342	KY0043606200	SCREW AND WASHER AY	1		-	004-35062-00		2400
348	KY0023806000	FLANGE NUT	3		-			2400
390	KY3914830101	RELAY(CA) AY	1		-			2400
393	KY0230060330	SPACER	1		-			2400
394	KYG31G7502103	SCREW	1		-			2400
430	KY31G7603303	WIRE CP	1		-			2400
470	KY31G7402501	SPONGE						2400
480	KY3514992008	SCREW & WASHER AY	6		-			2400
490	KY0241150010	GROMMET	1	15DX20DX9.5H	-			2400
491	KY31H7500903	GROMMET	1		-			2400
495	KY0566000250	CLAMP	1	6.5DX10BX95LX0.6T	-			2400
497	KY0110060020	FLANGE BOLT	1	M6X1.0X14DX12L	-			2400
500	KY31G7201900	CONTROL PANEL AY	1		-			2400
505	KY31G7303401	CONTROL PANEL	1		-			2400
520	KY0660000330	SWITCH	1		-			2400
- 1	KY0660009980	KEY, SWITCH	2	MARK 103	-			2400
530	KY3884574608	AC RECEPTACLE	1		-			2400
531	KY3534573308	AC RECEPTACLE	1		-			2400
535	KY31F7600501	SCREW & WASHER AY	2		-			2400
536	KY0043605200	SCREW & WASHER AY	4					2400
537	KY31F7600601	FLANGE NUT	4					2400
538	KY0031005000	WASHER	4					2400
542	KY0021705000	NUT	4					2400
560	KY3914790011	VOLTMETER	1		-			2400
562	KY3884980108	NUT						2400
565	KY3934065008	HOUR METER	1	50HZ	-			2400
570	KY3934310101	PILOT LAMP CP	1	RED	-			2400
571	KY3207511808	NEON LAMP	1		-			2400
575	KY3934500601	LAMP	1	18V/0.11A	-			2400
660	KY31G7500503	BREAKER	1		-			2400
665	KY31B7901103	SCREW&WASHER AY	2		-			2400
670	KY3534571608	TERMINAL BOLT	1		-			2400
920	KY30G4910608	LABEL (EARTH)	1		-			2400
928	KY0732004490	LABEL (ELEC. SHOCK)	1		-			2400

FIG. 2600

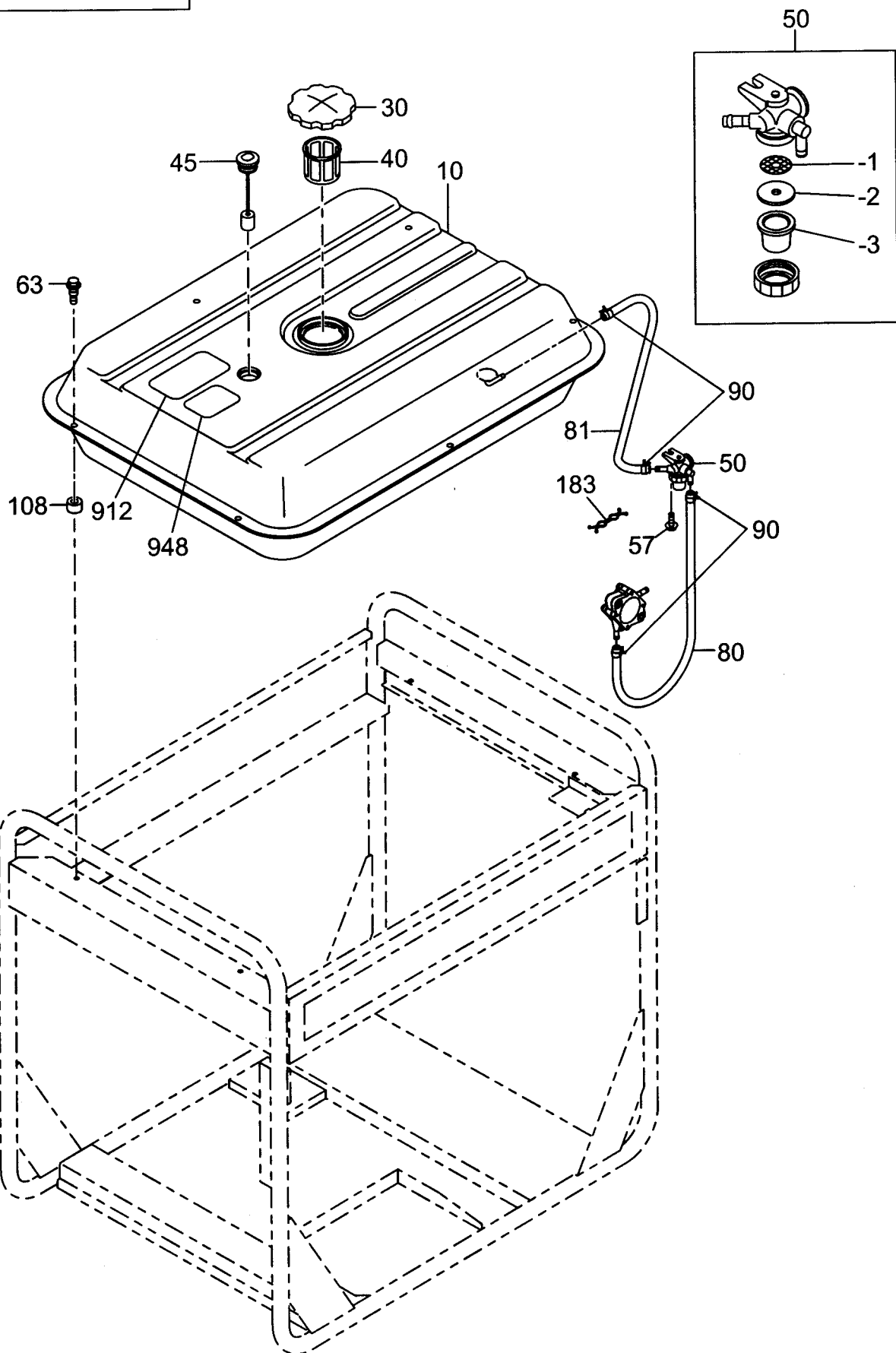


FIG. 2900

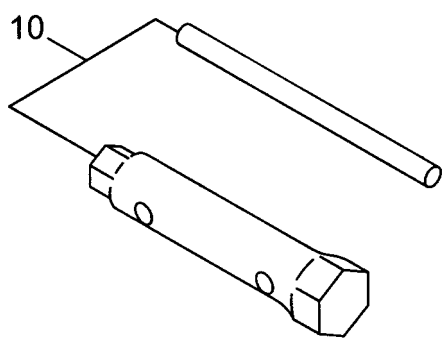


FIG. 3000

