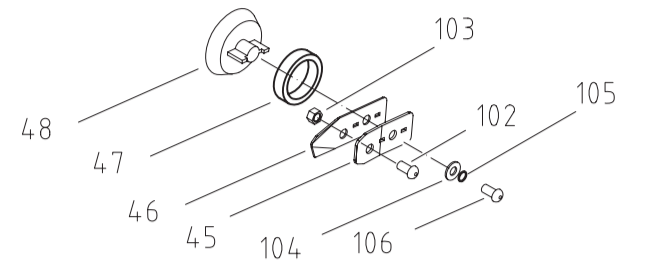


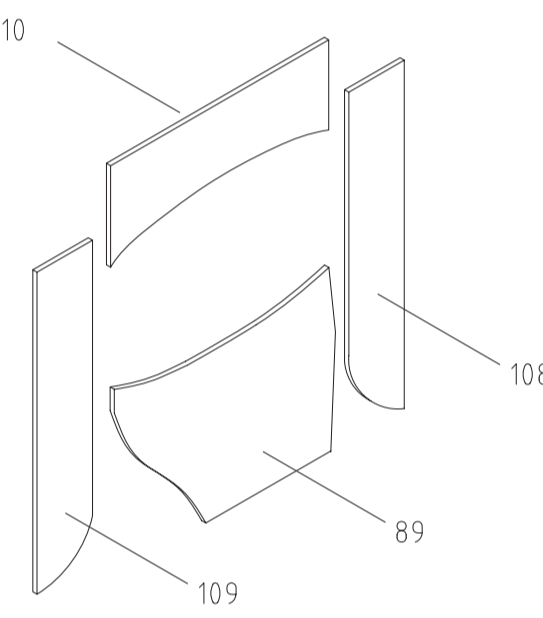
ASSEMBLY AND PARTS DRAWING

IG3000

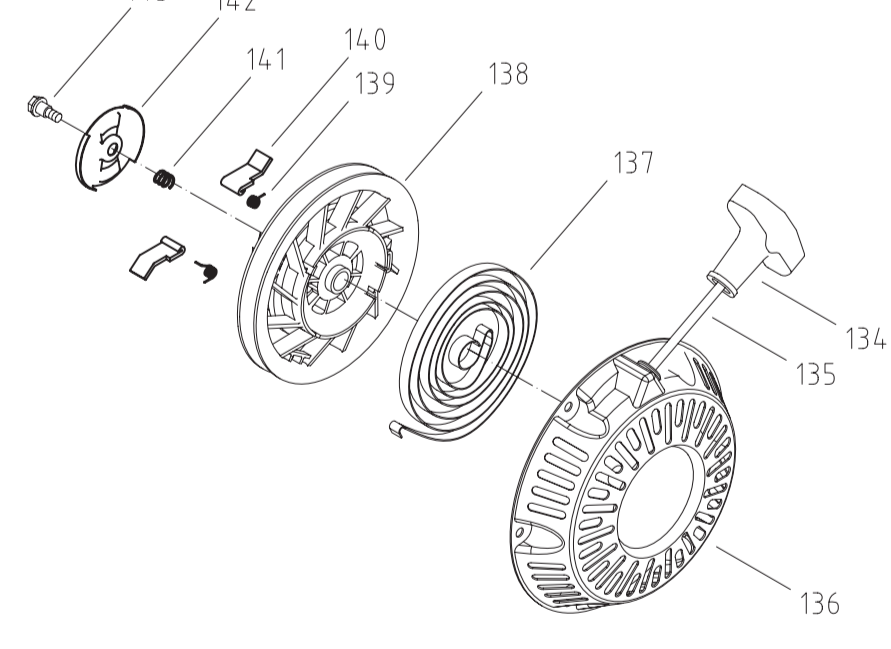
Door Lock Parts KGE3300Ti-08330



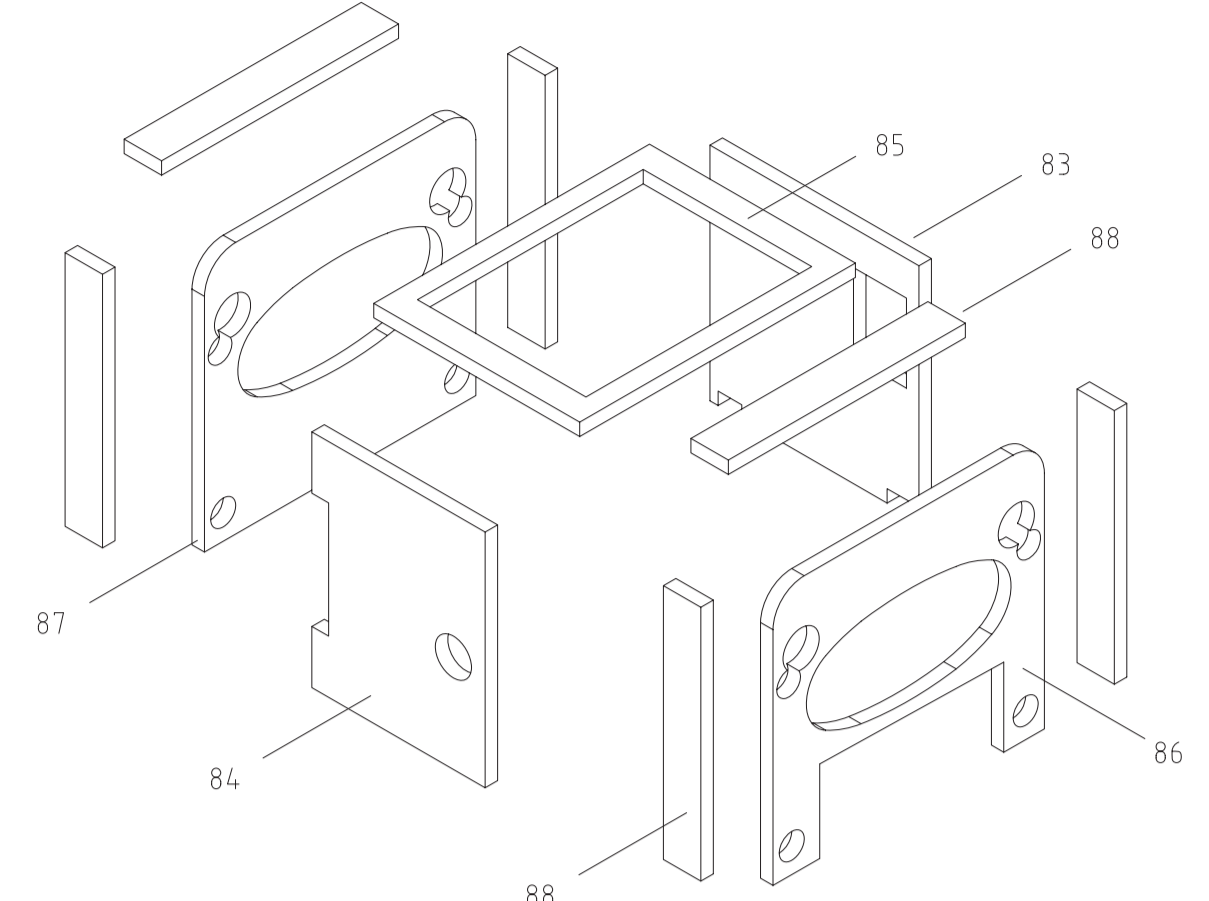
Complex Heat Insulation Aluminum Foil Assembly KGE3300Ti-10500



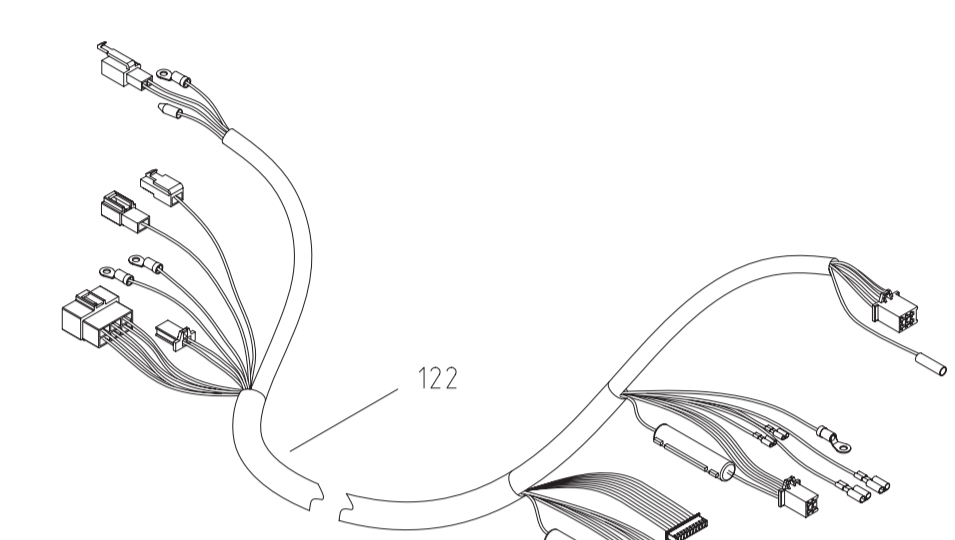
Recoil Starter Assembly KG160-12000a



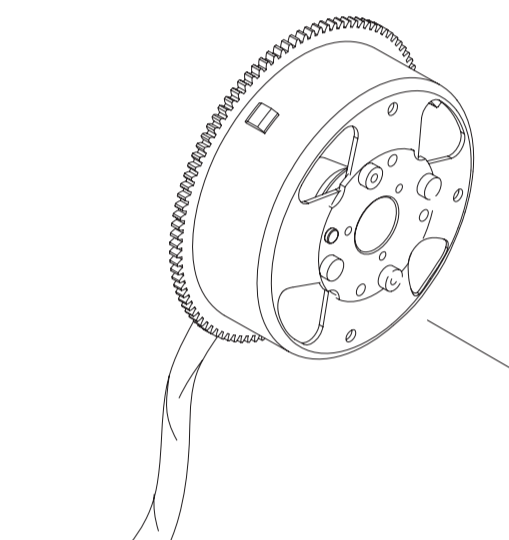
Sponge Assembly KGE3300Ti-08800



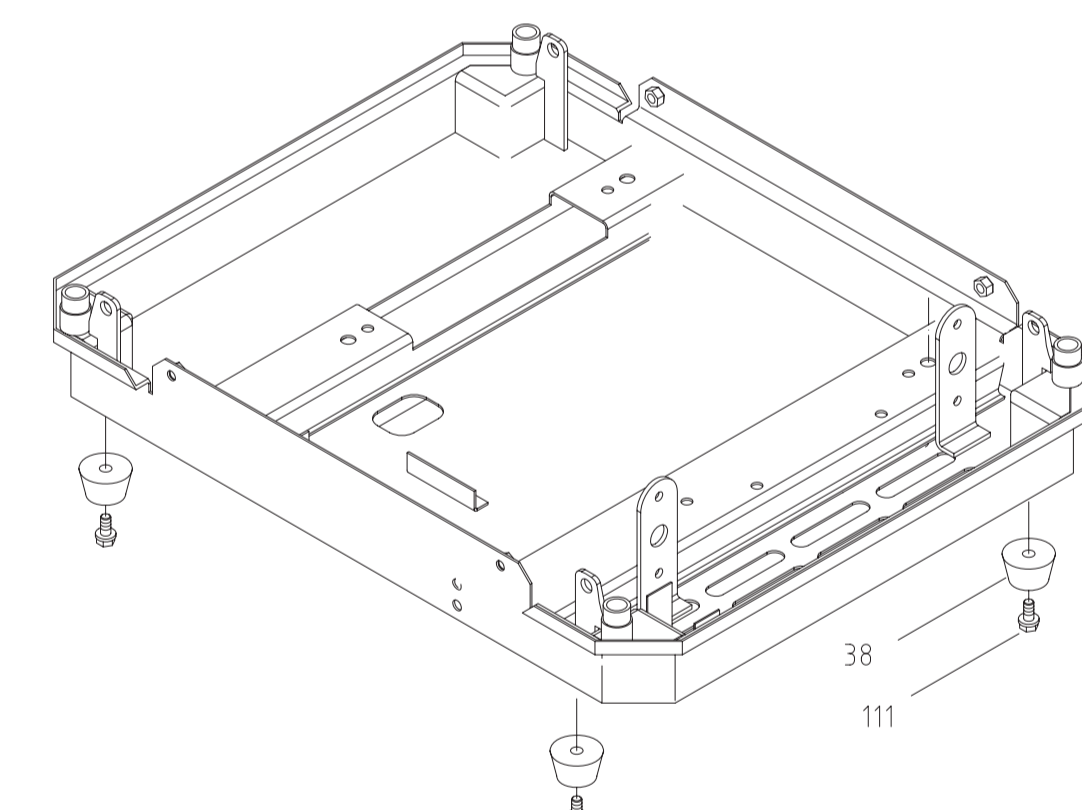
Connection Wire KGE3500Ti-13210



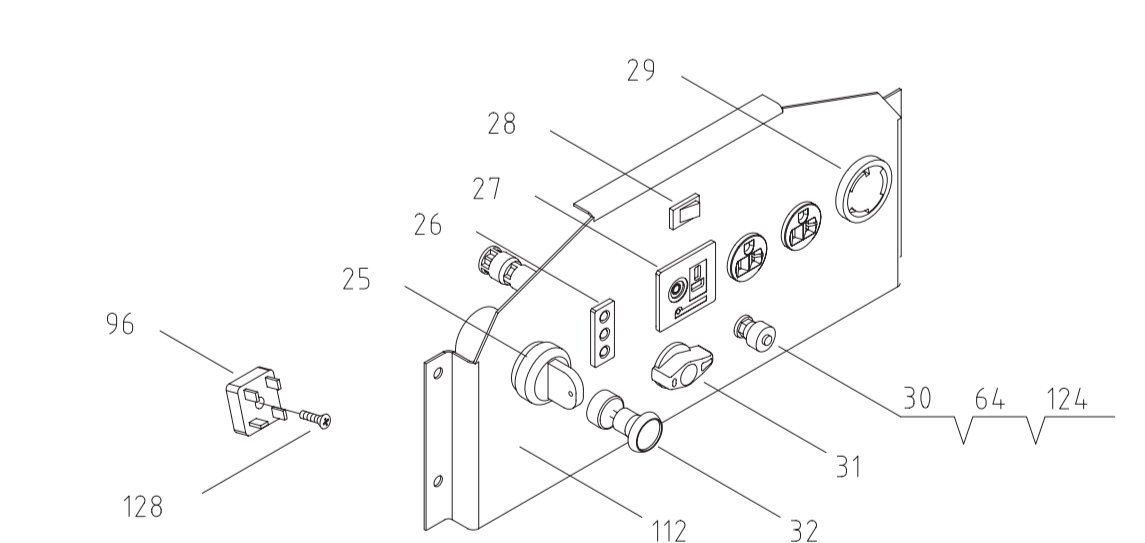
Motor Assembly KD(M)35(A)-02000a



Chassis Bottom Shock Pad KGE3300Ti-06700



Control Panel Assembly KGE3300Ti-13100



No.	Part No.	Description	Qty.	No.	Part No.	Description	Qty.	No.	Part No.	Description	Qty.	No.	Part No.	Description	Qty.	No.	Part No.	Description	Qty.				
1	KG205GETi-00000	Gasoline engine	1	26	KI-DHQ-30	Three in one igniter	1	51	KGE3300Ti-08100	Machine Cabinet Weldment	1	76	KGE3300Ti-08104	Handling Panel Cover	1	101	GB/T97.1-2002	Big Washer 6	14	126	KGE3300Ti-17004	Battery connecting sheath (black)	1
2	KD(M)30(A)-02205	Stator location pin	2	27	WZ-Z2 8.3A DC12V	DC receptacle	1	52	KGE3300Ti-11010	Fuel Tank Cover Assembly	1	77	KGE3300Ti-08107	Float Window Glass	1	102	GB/T818-2000	Plus Screw M5X8	1	127	KGE3300Ti-17004	Battery connecting sheath (red)	1
3	KD(M)35(A)-02100	Stator assembly	1	28	RF-1003-BB2	Boat shaped switch	1	53	KGE3300Ti-08106	Window Fixed Sheath	1	78	KGE3300Ti-08320	Machine Cabinet Doorcase Weldment	1	103	GB/T6170-2000	Nut M5	1	128	GB/T818-2000	Plus screw M5X20	1
4	KD(M)35(A)-02200	Rotor assembly	1	29	Optional	AC receptacle	2	54	KGE3300Ti-11300	Oil Scale Subassembly	1	79	KGE3300Ti-08330	Door Lock Part	1	104	GB/T97.1-2002	Flat Washer 5 (Blackening)	1	129	GB/T5789-2000	Hexagonal flange bolt M6X18	14
5	KGE3300Ti-05001	Fan	1	30	GB/806-1988	Grounding nut M6	1	55	KGE3300Ti-11003	Fuel Tank Spring Washer	4	80	KGE3300Ti-08602	Seal Strip of Exhaust Window	1	105	GB/T93-1987	Spring Washer 5 (Blackening)	1	130	GB/T5789-2000	Hexagonal flange bolt M5X12	2
6	KGE2800Ti-03010	Claw disc fixing plate weldment	1	31	KGE3300Ti-11005	Oil tank switch adjusting pipe	1	56	5GF-LDE-03600	Land wheel	4	81	KGE3300Ti-08709a	Connection Curved Plate	1	106	GB/T818-2000	Plus Screw M5X12 (Blackening)	1	131	GB/T5789-2000	Hexagonal flange bolt M6X70	3
7	KG160-05005a	Starter puller	1	32	KGE3500Ti-14000	Choke grip	1	57	KGE3500Ti-18100	Axle Weldment	2	82	KGE3300Ti-08716	Machine Frame Pad	2	107	GB/T818-2000	Plus Screw M6X10	4	132	KGE3300Ti-11009	Complex Heat Insulation Aluminum Foil	1
8	KGE3300Ti-04001	Motor guide cover	1	33	KGE3300Ti-13502	Bushing	3	58	QC/T623-1999	Lock Pin 12	4	83	KGE3300Ti-08801a	Inner Label Sponge of Machine Cabinet Left Side Plate	1	108	KGE3300Ti-10502	Complex Heat Insulation Aluminum Foil	1	133	KG160-a-12000	Recoil starter	1
9	KGE3300Ti-13300	Ignition coil	1	34	DU30	Inverter cell	1	59	GB/T96.2-2002	Big Washer 12	8	84	KGE3300Ti-08802a	Inner Label Sponge of Machine Cabinet Door Plate	1	109	KGE3300Ti-10503	Complex Heat Insulation Aluminum Foil	1	134	KG160-12011	Starter handle	1
10	KGE3500Ti-13601a	Trigger	1	35	KGE3300Ti-13501	Shock Pad	3	60	KGE3500Ti-18200	Right Supporting Plate Subassembly	2	85	KGE3300Ti-08803a	Inner Label Sponge of Machine Cabinet Upper Cover Plate	1	110	KGE3300Ti-10504	Complex Heat Insulation Aluminum Foil	1	135	KG160-12009	Starter guyrope	1
11	KGE3300Ti-13003	Wire pressure plate	36	36	KGE3300Ti-08700	Framework weldment	1	61	KGE3500Ti-18300	Left Supporting Plate Subassembly	2	86	KGE3300Ti-08804a	Inner Labelled Sponge of Front Cover	1	111	GB/T5789-2000	Hexagonal Flange Bolt M8X16	12	136	KG160-a-12100	Starter case weldment	1
12	KGE3300Ti-01010	Cylinder base cover	1	37	GB/T62-1988	Butterfly nut M6	2	62	GB/T5789-2000	Hexagonal flange bolt M6X12	26	87	KGE3300Ti-08805a	Inner Labelled Sponge of Rear Cover	1	112	KGE3500Ti-13110	Control panel	1	137	KG160-12003	Recoil starter spring	1
13	KGE3300Ti-10301	Muffie elbow pipe	1	38	KGE3300Ti-06700	Shock Pad of Chassis Bottom	4	63	GB/T845-1985	Self-tapping Screw ST4.8X18	6	88	KGE3300Ti-08808a	Inner Labelled Sponge of Front and Rear Cover	6	113	GB/T6177.1-2000	Hexagonal flange nut M8	4	138	KG160-a-12002	Starter scroll	1
14	KGE3300Ti-10100	Muffie body assembly	1	39	KGE3300Ti-03000a	Chassis Assembly	1	64	GB/T5789-2000	Hexagonal flange bolt M6X25	9	89	KGE3300Ti-10501	Complex Heat Insulation Aluminum Foil	1	114	GB/T6170-2000	Nut M8	6	139	KG240-12007	Pallet spring	2
15	KGE3300Ti-10303	Gasket B	1	40	KGE3300Ti-12100	Shock Pad	2	65	GB/T5789-2000	Hexagonal flange bolt M6X16	2	90	KGE3300Ti-10400	Fireproof Cap Subassembly	1	115	GB/T97.1-2002	Washer 8	8	140	KG240-12008	Pallet	2
16	KGE3300Ti-10210	Muffie cover weldment	1	41	KGE3300Ti-12200	Shock Pad	2	66	GB/T70.1-2000	Inner Hexagonal flange Bolt M8X20	4	91	KGE3300Ti-11004	Fuel Tank Spring Washer Sleeve	4	116	GB/T818-2000	Plus Screw M6X16	2	141	KG240-12004	Friction spring	1
17	6-FM-9	Battery pressure plate	1	42	KGE3300Ti-08601	Exhausting Window	1	67	GB/T5789-2000	Hexagonal flange bolt M8X60	2	92	KGE3300Ti-11007	Fuel Supplying Pipe	1	117	GB/T93-1987	Spring washer 6	3	142	KG240-12005	Pallet guide plate	1
18	KGE3300Ti-17002	Battery fixing bolt	2	43	KGE3300Ti-08500	Rear Cover	1	68	KD(M)30(A)-02206	Stator Location Pin	4	93	KGE3300Ti-11008	Oil Filling Port Strainer	1	118	AWG10 (black)	Battery connection (-)	1	143	KG240-12006	Tighten bolt	1
19	KGE3300Ti-17001	Battery pressure plate	1	44	KGE3300Ti-11001	Fuel Tank	1	69	KGE3300Ti-13510	Module Connection Plate	1	94	KGE3300Ti-11016	Screw	1	119	AWG10 (red)	Battery connection (+)	1	144	KD(M)35(A)-02000a	Motor assembly	1
20	QC/T620-1999	A type hoop 8-12	2	45	KGE3300Ti-08333	Strengthen Plate of Door Lock	1	70	KGE3300Ti-01020	Air Conduct Plate	1	95	KGE3300Ti-11400	Oil Switch Subassembly	1	120	KGE3300Ti-11410	Long strainer	1	145	KG160-02014	Exhaust pipe gasket	1
21	KGE3300Ti-08201-100	Handle weldment	2	46	KGE3300Ti-08334	Door Lock	1	71	KGE3300Ti-01030	Cylinder Head Air Conduct Plate	1	96	KBPC2510	Rectifier	1	121	GB/T5789-2000	Hexagonal flange bolt M6X25	9	146			
22	KGE3300Ti-08204	Handle rubber sheath	4	47	KGE3300Ti-08332	Door Lock Gasket	1	72	KGE3300Ti-03003	Chassis Oil Drain Port Plug	1	97	SFC9AH/KYCD9AH	Charging Regulator	1	122	KGE3500Ti-13210	Connecting wire	1	147			
23	KGE3300Ti-08400	Front cover	1	48	KGE3300Ti-08331	Door Lock Button	1	73	KGE3300Ti-03100	Shock Pad Pressing Plate Weldment	1	98	GY6	Starting Relay	1	123	GB/T818-2000	Screw M6X16	2	148			
24	KGE3300Ti-13100	Control panel assembly	1	49	KGE3300Ti-08310	Machine Cabinet Door Weldment	1	74	KGE3300Ti-03200	Shock Pad Pressing Plate Weldment	1	99	KGE3300Ti-13002	Centra Line Seal Ring	1	124	GB/T6177.1-2000	Hexagonal flange nut M6	2	149			
25	JK427A	Electric starter key parts	1	50	KGE3300Ti-08108a	Fuel Tank Port Protection Sleeve	1	75	KDE5000X-30003	Shock Pad	2	100	GB/T93-1987	Spring Washer 8	12	125	GB/T70.1-2000	Inner hexagonal bolt M6X60	4	150			