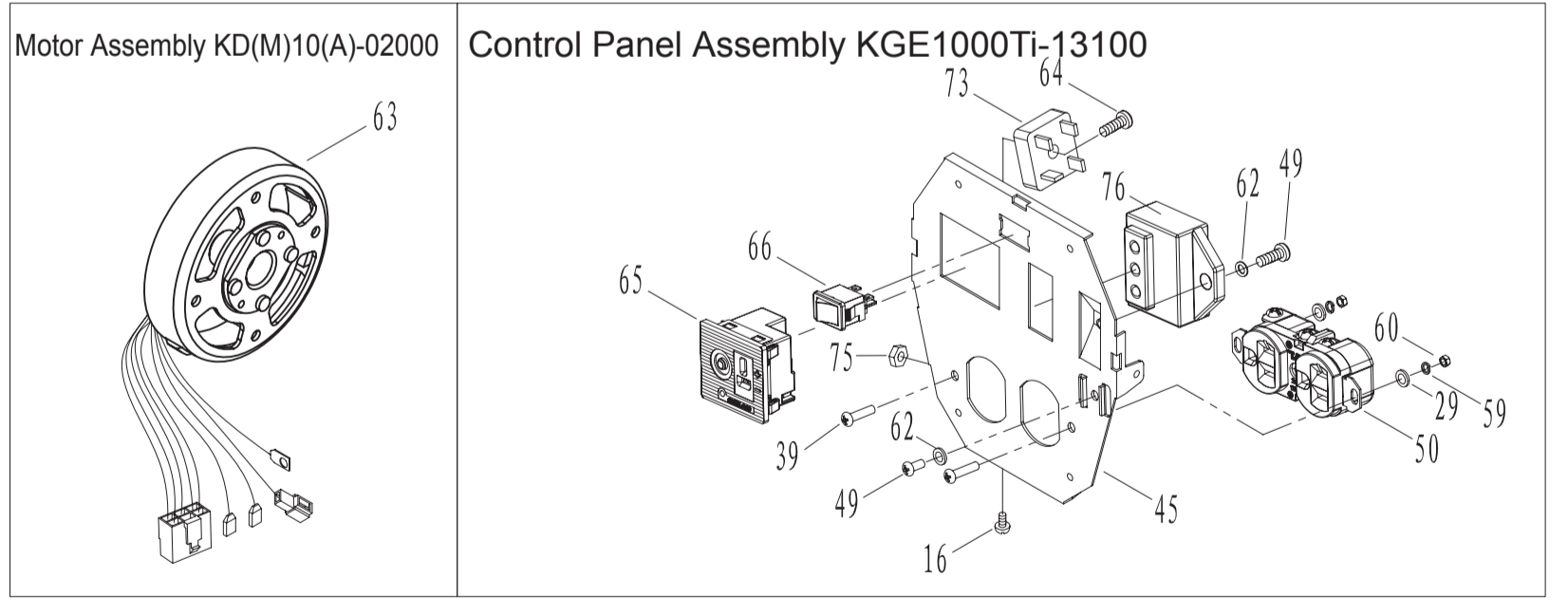
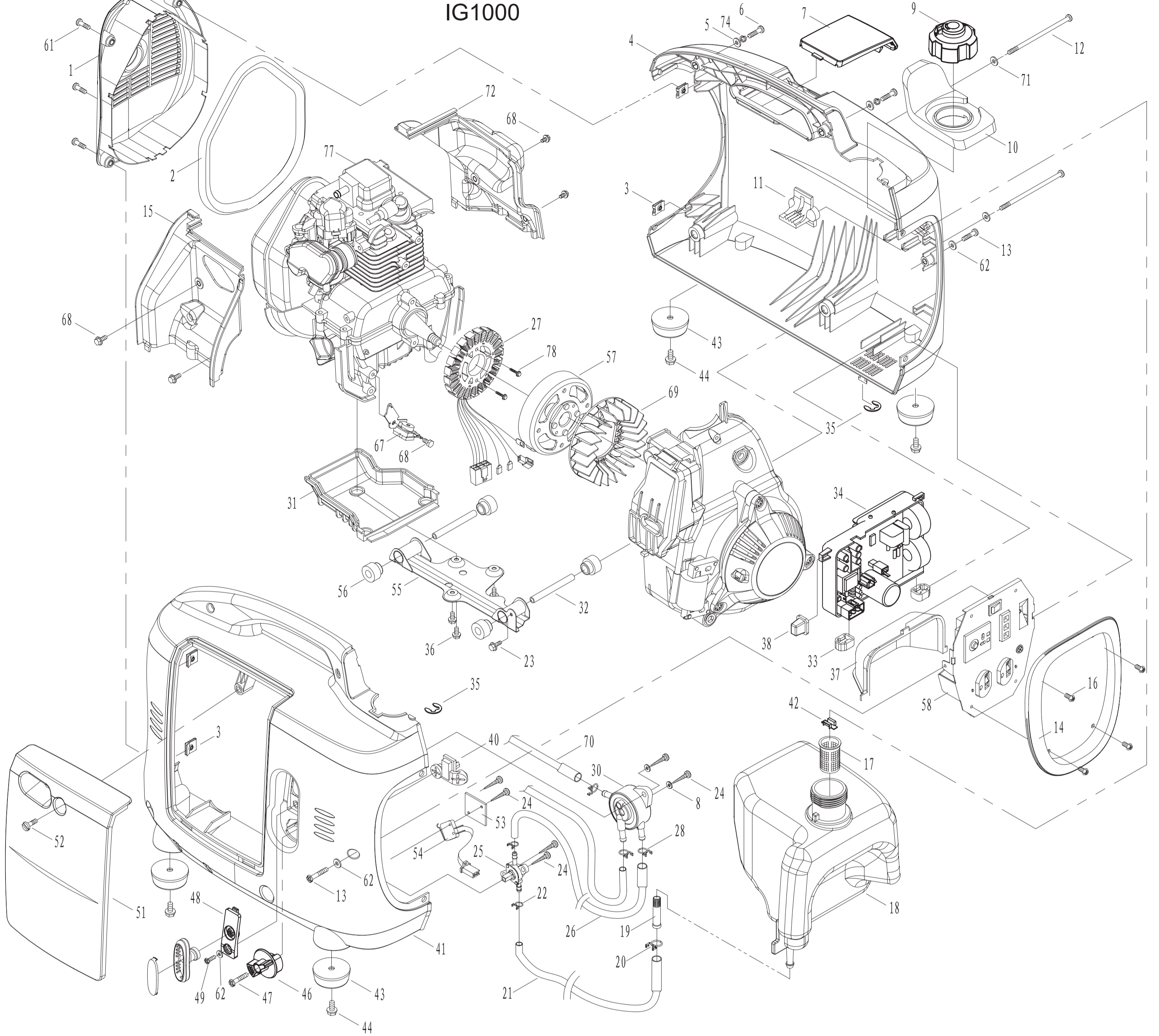


ASSEMBLY AND PARTS DRAWING

IG1000



No.	Part No.	Description	Qty.	No.	Part No.	Description	Qty.	No.	Part No.	Description	Qty.	No.	Part No.	Description	Qty.	No.	Part No.	Description	Qty.				
1	KGE1000Ti-06610	Rear Cover	1	16	GB/T818-2000	H-Type Plus Screw M5X10	4	31	KGE1000TiA-03031	Deflector of Lower Air Duct	1	46	KGE1000Ti-07008	Oil Switch Handle	1	61	GB/T818-2000	Screw M5X16	4	76	K3-200-1.0 (EXE+DHP-1.0)	Three-in-One Ignition Controller	1
2	KGE1000Ti-06601	Seal Strip of Rear Cover	1	17	KGE1000Ti-07011	Filter Bowl	1	32	KGE1000Ti-04204	Lower Hollow Shaft	2	47	KGE1000Ti-07304	Screw	1	62	GB/T97.1-2002	Washer 5	5	77	KG144-00000	KG144 Gasoline Engine	1
3	KGE1000Ti-06115	Plug-in	4	18	KGE1000Ti-07005	Fuel Tank	1	33	KGE1000Ti-00008	Module Shock Pad	2	48	KGE1000Ti-06102	Handle Fixed Seat	1	63	KD10-02000	Motor Assembly	1	78	GB/T5789-2000	Hexagonal Flange Bolt M5X25	2
4	KGE1000Ti-06310	Right Casing	1	19	KGE1000Ti-07004	Strainer	1	34	DU10	Inverter Module	1	49	GB/T818-2000	H-Type Plus Screw M5X12	3	64	GB/T818-2000	H-Type Plus Screw M5X20	1				
5	GB/T97.1-2002	Washer 6	2	20	KGE1000Ti-07012	Hoop 10	1	35	GB/T896-1986	Split Washer 9	2	50	5-20R	A-Type Doublet Receptacle	1	65	WZ-22	DC Receptacle (DC12V 8.3A)	1				
6	GB/T818-2000	H-Type Plus Screw M6X20	2	21	KGE1000Ti-07001	Fuel Supplying Pipe	1	36	GB/T5789-2000	Hexagonal Flange Bolt M6X16	3	51	KGE1000Ti-06201	Side Door of Left Casing	1	66	RF-1003-BB2	Smart Switch	1				
7	KGE1000Ti-06401	Right Casing Top Cover	1	22	KGE1000Ti-07006	Hoop 7	2	37	KGE1000Ti-06001	Protection Cover of Electric Parts	1	52	KGE1000Ti-04201b	Lower Shock Insulation Sleeve	4	71	GB/T96.1-2002	Washer 6	2				
8	GB/T97.1-2002	Washer 4	2	23	GB/T5789-2000	Hexagonal Flange Bolt M6X12	1	38	KGE1000Ti-00004	Rubber Square Protection Bracket	1	53	KGE3000Ti-03017	Micro-Active Switch Retainer	1	68	GB/T5789-2000	Hexagonal Flange Bolt M5x12	5				
9	KGE1000Ti-07200	Fuel Tank Cover	1	24	GB/T845-1985	Plus Self-tapping Screw ST3.8X16-C-H	6	39	GB/T818-2000	H-Type Plus Screw M4X16	2	54	KW4A-Z6CSP200	Micro-Active Switch	1	69	KD 00 10 (A) -02200	Impeller	1				
10	KGE1000Ti-07009	Protection Sleeve of Fuel Tank Port	1	25	KGE1000Ti-07300	Oil Switch Assembly	1	40	KGE1000Ti-06101	Cross Protection Bracket of Left Casing	1	55	KGE1000Ti-04100a	Engine Fixed Bracket Weldment	1	70	KGE1000Ti-07003	Fuel Supplying Pipe	1				
11	KGE1000Ti-06301	Cross Protection Bracket of Right Casing	1	26	KGE1000Ti-07002	Fuel Supplying Pipe	1	41	KGE1000Ti-06110	Protection Cover of Electric Parts	1	56	KGE1000Ti-04201b	Lower Shock Insulation Sleeve	4	71	GB/T96.1-2002	Washer 6	2				
12	KGE1000Ti-00007	Bolt M6X10S	2	27	KD 00 10 (A) -02100	Stator Assembly	1	42	KGE1000Ti-07013	Oil Indicator	1	57	KD 00 10 (A) -02200	Rotor Assembly	1	72	KGE1000TiA-03021	Exhaust Side Deflector Subassembly	1				
13	GB/T818-2000	H-Type Plus Screw M5X25	2	28	KGE1000Ti-07007	Hoop 9	3	43	KGE1000Ti-06700	Shock Pad of Casing Bottom	4	58	KGE1000Ti-13100	Control Panel Assembly	1	73	KBPC2510	Rectifier	1				
14	KGE1000Ti-06501	Front Cover	1	29	GB/T97.1-2002	Washer 4	2	44	GB/T5789-2000	Hexagonal Flange Bolt M6X12	4	59	GB/T93-1987	Plastic Washer 4	2	74	GB/T93-1987	Spring Washer 6	2				
15	KGE1000TiA-03011	Inlet Side Deflector Subassembly	1	30	KGE1000Ti-07100	Fuel Vacuum Pump	1	45	KGE1000Ti-13101	Control Panel	1	60	GB/T41-2000	Hexagonal Nut M4	2	75	GB/T41-2000	Hexagonal Nut M5	1				