

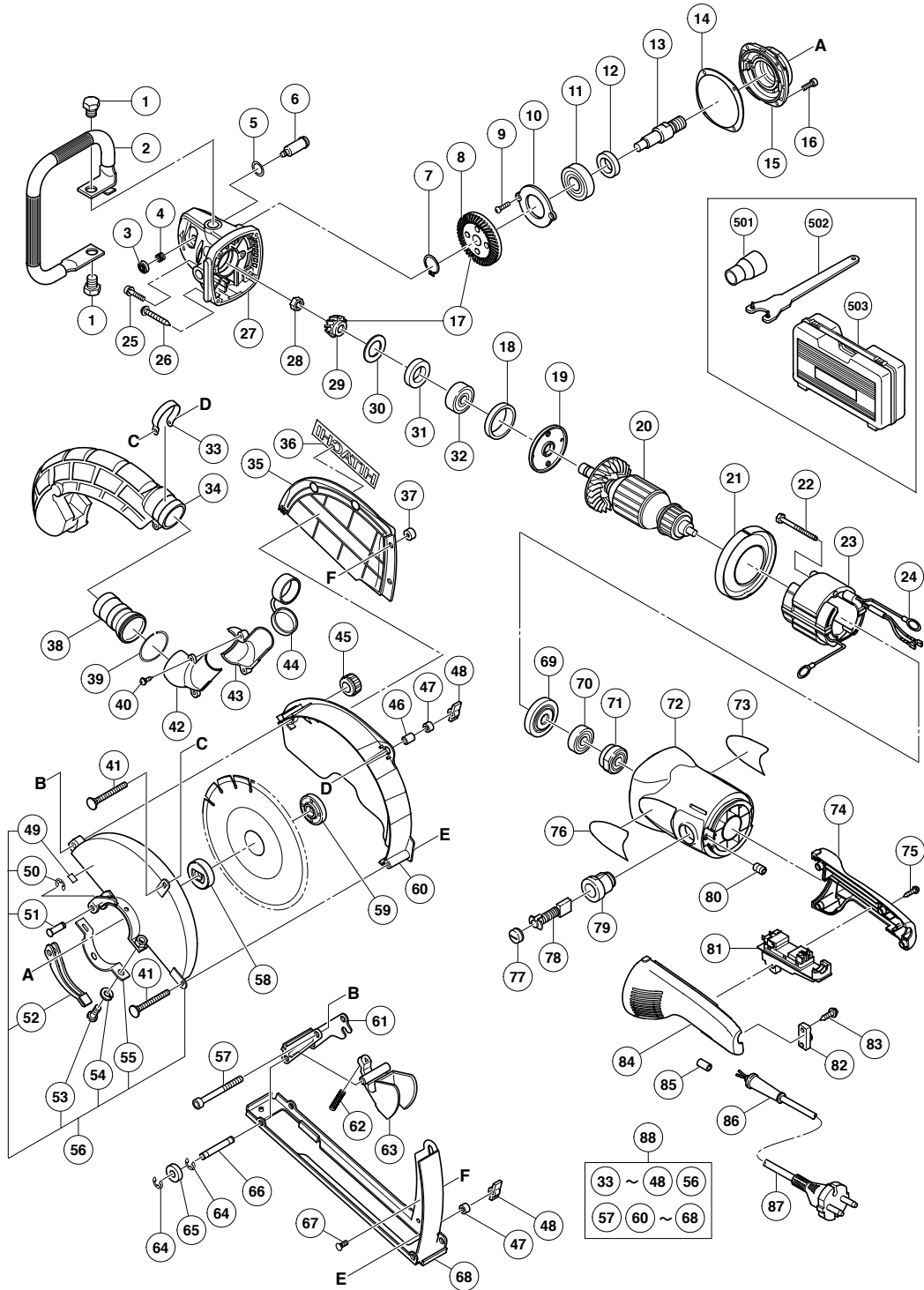
## ELECTRIC TOOL PARTS LIST

■ CUTTER

2007 · 8 · 27

Model CM 9SR

(E1)



**PARTS**

CM 9SR

ITEM NO.	CODE NO.	DESCRIPTION	NO. USED	REMARKS
1	985-597	BOLT M14	2	
2	322-141	PIPE HANDLE	1	
3	306-888	PUSHING BUTTON	1	
4	320-219	SPRING	1	
5	320-218	O-RING	1	
6	306-890	LOCK PIN	1	
7	939-542	RETAINING RING FOR D12 SHAFT (10 PCS.)	1	
8	320-224	GEAR	1	
9	949-236	MACHINE SCREW M5X10 (10 PCS.)	2	
10	320-229	BEARING COVER (B)	1	
11	630-2VV	BALL BEARING 6302VVCMP2L	1	
12	990-852	FELT PACKING (B)	1	
13	320-234	SPINDLE	1	
14	320-228	SEAL PLATE	1	
15	320-227	PACKING GLAND	1	
16	994-192	HEX. SOCKET HD. BOLT (W/FLANGE) M5X16	4	
17	320-223	GEAR AND PINION ASS'Y	1	INCLUD. 8, 29
18	994-208	RUBBER RING (B)	1	
19	320-220	BEARING COVER (A)	1	
* 20	360-762C	ARMATURE 110V	1	
* 20	360-762E	ARMATURE 220V-240V	1	
21	320-215	FAN GUIDE	1	
22	961-501	HEX. HD. TAPPING SCREW D5X60	2	
* 23	340-664C	STATOR ASS'Y 110V	1	
* 23	340-664E	STATOR ASS'Y 220V-230V	1	
24	958-032	BRUSH TERMINAL	2	
25	984-509	SEAL LOCK HEX. SOCKET HD. BOLT M5X14	2	
26	323-209	TAPPING SCREW (W/FLANGE) D5X35 (BLACK)	4	
27	320-217	GEAR COVER ASS'Y	1	INCLUD. 3-6
28	320-226	SPECIAL NUT M10	1	
29	320-225	PINION	1	
30	320-221	SEAL WASHER	1	
31	320-222	FELT PACKING	1	
32	630-1VV	BALL BEARING 6301VVCMP2L	1	
33	328-754	HOSE BAND	1	
34	328-748	DUST DUCT	1	
35	328-752	COVER (B)	1	
36		HITACHI LABEL (B)	1	
37	997-467	KNOB NUT	2	
38	328-758	ADAPTER	1	
39	328-761	RING	1	
40	305-720	TAPPING SCREW (W/FLANGE) D4X12	2	
41	324-877	BOLT (SQUARE) M6X57	2	
42	328-759	ADAPTER (A)	1	
43	328-760	ADAPTER (B)	1	
44	324-865	DUST CAP	1	
45	995-578	KNOB NUT	1	
46	885-414	HOLDER SLEEVE (B)	1	
47	328-841	SLEEVE	1	
48	314-622	WING NUT M6	2	
49	311-492	LABEL	1	

**PARTS**

CM 9SR

ITEM NO.	CODE NO.	DESCRIPTION	NO. USED	REMARKS
50	673-489	RETAINING RING (E-TYPE) FOR D5 SHAFT	1	
51	321-546	SET PIN	1	
52	321-545	LEVER	1	
53	306-887	BOLT M8X22	1	
54	949-457	SPRING WASHER M8 (10 PCS.)	1	
55	321-544	SET PIECE	1	
56	328-745	WHEEL GUARD ASS'Y	1	INCLUD. 49-55
57	328-843	BOLT (A)	1	
58	937-907Z	WHEEL WASHER (A)	1	
59	937-909Z	WHEEL NUT M14X2	1	
60	328-749	COVER (A)	1	
61	328-750	HOLDER	1	
62	314-429	SPRING	1	
63	328-751	POCKET GUIDE	1	
64	974-577	RETAINING RING (E-TYPE) FOR D7 SHAFT	8	
65	328-755	ROLLER	4	
66	328-756	ROLLER SHAFT	2	
67	328-757	BOLT (SQUARE) M5	2	
68	328-747	BASE	1	
69	320-216	DUST SEAL	1	
70	600-0VV	BALL BEARING 6000VVCMP52L	1	
71	321-536	BEARING BUSHING	1	
72	325-640	HOUSING ASS'Y	1	INCLUD. 71, 79, 80
73		NAME PLATE	1	
74	325-642	HANDLE (A)	1	
75	305-812	TAPPING SCREW (W/FLANGE) D4X16 (BLACK)	4	
76		HITACHI LABEL	1	
77	940-540	BRUSH CAP	2	
* 78	999-044	CARBON BRUSH (1 PAIR)	1	
* 78	999-074	CARBON BRUSH (AUTO STOP TYPE) (1 PAIR)	1	
* 78	999-044	CARBON BRUSH (1 PAIR)	2	FOR GBR
79	980-487	BRUSH HOLDER	2	
80	938-477	HEX. SOCKET SET SCREW M5X8	1	
* 81	320-239	SWITCH (2P PILLAR TYPE) W/SAFETY LOCK	1	
* 81	320-238	SWITCH (2P PILLAR TYPE) W/SAFETY LOCK	1	FOR FRA, HOL, BEL, GBR, NOR, DEN
82	960-266	CORD CLIP	1	
83	984-750	TAPPING SCREW (W/FLANGE) D4X16	2	
84	325-641	HANDLE (B)	1	
85	981-373	TUBE (D)	2	FOR CORD
86	940-778	CORD ARMOR D10.7	1	
* 87	500-247Z	CORD	1	(CORD ARMOR D10.7)
* 87	321-539	CORD	1	(CORD ARMOR D10.7) FOR GBR (110V)
* 87	500-450Z	CORD	1	(CORD ARMOR D10.7) FOR GBR (230V)
88	328-744	DUST COVER ASS'Y	1	INCLUD. 33-48, 56, 57, 60-68

**STANDARD ACCESSORIES**

CM 9SR

ITEM NO.	CODE NO.	DESCRIPTION	NO. USED	REMARKS
501	320-994	ADAPTER	1	
502	937-913Z	WRENCH	1	
503	328-844	CASE (A)	1	

**OPTIONAL ACCESSORIES**

ITEM NO.	CODE NO.	DESCRIPTION	NO. USED	REMARKS
601	310-337	SUPER WASHER	1	
* 602		DIAMOND WHEEL 230MMXD40-D22.2 HOLE	1	EXCEPT FOR GBR