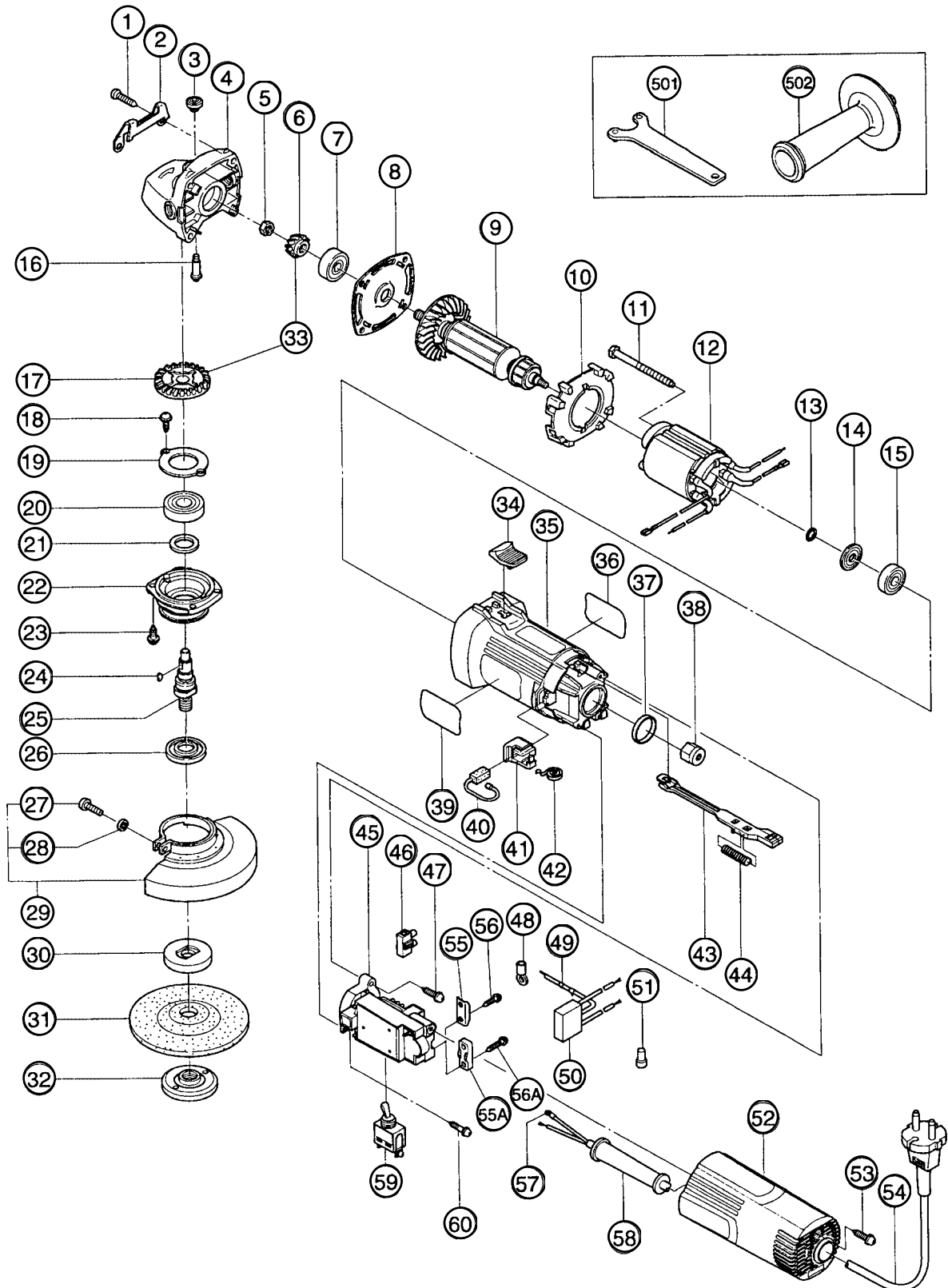


ELECTRIC TOOL PARTS LIST

■ ELECTRONIC DISC GRINDER
Model G 13YD

2000·12·25
(E1)



PARTS

G 13YD

ITEM NO.	CODE NO.	DESCRIPTION	NO. USED	REMARKS
1	937-807	TAPPING SCREW D5X25	4	
2	317-807	GUARD PLATE	1	
3	301-944	PUSHING BUTTON	1	
4	316-484	GEAR COVER ASS'Y	1	INCLUD.3,16
5	301-941	SPECIAL NUT M7	1	
6	316-437	PINION	1	
7	628-VVC	BALL BEARING 628VVC2PS2-L	1	
8	316-480	BEARING HOLDER	1	
9	360-540E	ARMATURE 230V	1	
10	316-479	FAN GUIDE	1	
11	982-021	HEX. HD. TAPPING SCREW D4X70	2	
12	340-484E	STATOR (A) 230V	1	
13	311-737	THRUST WASHER	1	
14	319-386	DUST SEAL	1	
15	608-VVM	BALL BEARING 608VVC2PS2L	1	
16	301-943	LOCK PIN	1	
17	316-438	GEAR	1	
18	997-263	SEAL LOCK SCREW (W/SP. WASHER) M4X10	2	
19	316-490	BEARING COVER	1	
20	620-1DD	BALL BEARING 6201DDCMPS2L	1	
21	301-946	FELT PACKING	1	
22	317-823	PACKING GLAND	1	
23	307-127	SEAL LOCK SCREW (W/SP. WASHER) M4X12	4	
24	940-220	WOODRUFF KEY 2.5X8	1	
25	317-804	SPINDLE	1	
26	301-945	FRINGER	1	
27	949-241	MACHINE SCREW M5X20 (10 PCS.)	1	
28	949-454	SPRING WASHER M5 (10 PCS.)	1	
29	994-323	WHEEL GUARD ASS'Y	1	INCLUD.27,28
30	937-817Z	WHEEL WASHER	1	
31	316-822	D. C. WHEELS 125MM A36Q (25 PCS.)	1	
32	994-324	WHEEL NUT M14	1	
33	316-436	GEAR ASS'Y	1	INCLUD.6,17
34	314-428	SLIDE KNOB	1	
35	317-802	HOUSING	1	
36		NAME PLATE	1	
37	995-662	RUBBER RING	1	
38	318-721	MAGNET	1	
39		HITACHI LABEL	1	
40	999-076	CARBON BRUSH (AUTO STOP TYPE) (1 PAIR)	2	
41	317-810	BRUSH HOLDER	2	
42	308-536	SPRING	2	
43	319-370	SLIDE BAR	1	
44	314-429	SPRING	1	
45	319-897	CONTROLLER SET	1	INCLUD.55A,56A
46	938-307	PILLAR TERMINAL	1	
47	301-653	TAPPING SCREW (W/FLANGE) D4X20 (BLACK)	1	
48	311-741	TERMINAL	1	
49	314-854	EARTH TERMINAL	1	
50	317-491	NOISE SUPPRESSOR	1	
51	959-140	CONNECTOR 50091 (10 PCS.)	1	

STANDARD ACCESSORIES

G 13YD

ITEM NO.	CODE NO.	DESCRIPTION	NO. USED	REMARKS
501	938-332Z	WRENCH	1	
502	302-142	SIDE HANDLE	1	

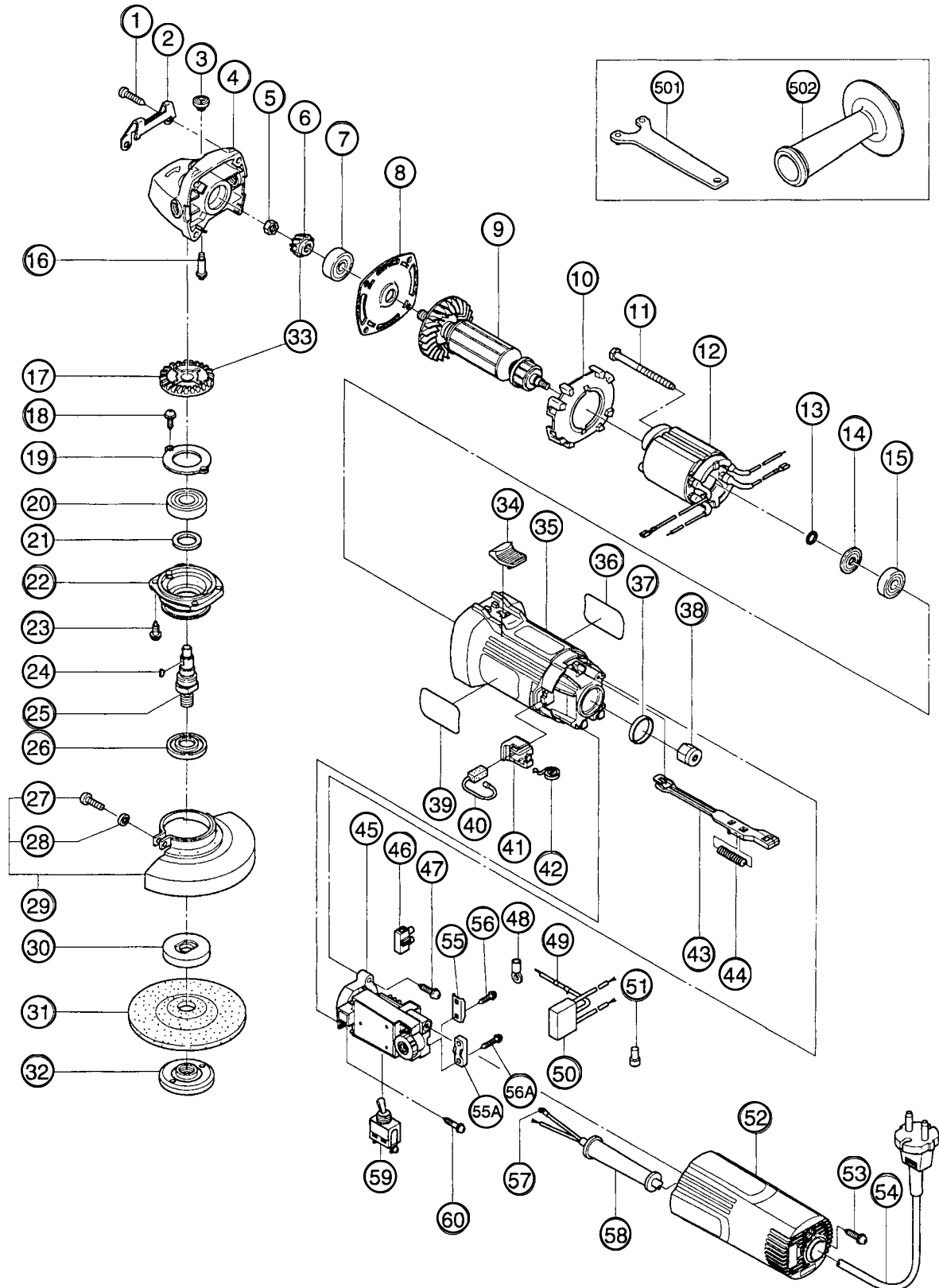
OPTIONAL ACCESSORIES

ITEM NO.	CODE NO.	DESCRIPTION	NO. USED	REMARKS
601	937-825Z	RUBBER PAD	1	
602	937-826Z	WASHER NUT	1	
603	314-062	SANDING DISCS 125MM C-P16 (10 PCS.)	1	
604	314-063	SANDING DISCS 125MM C-P20 (10 PCS.)	1	
605	314-064	SANDING DISCS 125MM C-P24 (10 PCS.)	1	
606	314-065	SANDING DISCS 125MM C-P30 (10 PCS.)	1	
607	314-066	SANDING DISCS 125MM C-P36 (10 PCS.)	1	
608	314-067	SANDING DISCS 125MM C-P40 (10 PCS.)	1	
609	314-068	SANDING DISCS 125MM C-P50 (10 PCS.)	1	
610	314-069	SANDING DISCS 125MM C-P60 (10 PCS.)	1	
611	314-070	SANDING DISCS 125MM C-P80 (10 PCS.)	1	
612	314-071	SANDING DISCS 125MM C-P100 (10 PCS.)	1	
613	314-072	SANDING DISCS 125MM C-P120 (10 PCS.)	1	
614	310-392	DIAMOND WHEEL (SEGMENT) 125MM-D22 HOLE	1	
615	310-338	SUPER WASHER	1	

ELECTRIC TOOL PARTS LIST

■ ELECTRONIC DISC GRINDER
Model G 13V

2000·12·25
(E1)



PARTS

G 13V

ITEM NO.	CODE NO.	DESCRIPTION	NO. USED	REMARKS
1	937-807	TAPPING SCREW D5X25	4	
2	317-807	GUARD PLATE	1	
3	301-944	PUSHING BUTTON	1	
4	316-484	GEAR COVER ASS'Y	1	INCLUD.3,16
5	301-941	SPECIAL NUT M7	1	
6	316-437	PINION	1	
7	628-VVC	BALL BEARING 628VVC2PS2-L	1	
8	316-480	BEARING HOLDER	1	
9	360-540E	ARMATURE 230V	1	
10	319-898	FAN GUIDE	1	
11	982-021	HEX. HD. TAPPING SCREW D4X70	2	
12	340-484E	STATOR (A) 230V	1	
13	311-737	THRUST WASHER	1	
14	319-386	DUST SEAL	1	
15	608-VVM	BALL BEARING 608VVC2PS2L	1	
16	301-943	LOCK PIN	1	
17	316-438	GEAR	1	
18	997-263	SEAL LOCK SCREW (W/SP. WASHER) M4X10	2	
19	316-490	BEARING COVER	1	
20	620-1DD	BALL BEARING 6201DDCMPS2L	1	
21	301-946	FELT PACKING	1	
22	317-823	PACKING GLAND	1	
23	307-127	SEAL LOCK SCREW (W/SP. WASHER) M4X12	4	
24	940-220	WOODRUFF KEY 2.5X8	1	
25	317-804	SPINDLE	1	
26	301-945	FRINGER	1	
27	949-241	MACHINE SCREW M5X20 (10 PCS.)	1	
28	949-454	SPRING WASHER M5 (10 PCS.)	1	
29	994-323	WHEEL GUARD ASS'Y	1	INCLUD.27,28
30	937-817Z	WHEEL WASHER	1	
31	316-822	D. C. WHEELS 125MM A36Q (25 PCS.)	1	
32	994-324	WHEEL NUT M14	1	
33	316-436	GEAR ASS'Y	1	INCLUD.6,17
34	314-428	SLIDE KNOB	1	
35	317-802	HOUSING	1	
36		NAME PLATE	1	
37	995-662	RUBBER RING	1	
38	318-721	MAGNET	1	
39		HITACHI LABEL	1	
40	999-076	CARBON BRUSH (AUTO STOP TYPE) (1 PAIR)	2	
41	317-810	BRUSH HOLDER	2	
42	308-536	SPRING	2	
43	319-370	SLIDE BAR	1	
44	314-429	SPRING	1	
45	319-899	CONTROLLER SET	1	INCLUD.55A,56A
46	938-307	PILLAR TERMINAL	1	
47	301-653	TAPPING SCREW (W/FLANGE) D4X20 (BLACK)	1	
48	311-741	TERMINAL	1	
49	314-854	EARTH TERMINAL	1	FOR NOISE SUPPRESSOR
50	994-273	NOISE SUPPRESSOR	1	
51	959-140	CONNECTOR 50091 (10 PCS.)	1	

PARTS

ITEM NO.	CODE NO.	DESCRIPTION	NO. USED	REMARKS
52	319-376	TAIL COVER	1	
53	301-653	TAPPING SCREW (W/FLANGE) D4X20 (BLACK)	1	
* 54	500-409Z	CORD	1	(CORD ARMOR D8.8)
* 54	500-247Z	CORD	1	(CORD ARMOR D8.8) FOR NOR,SWE,DEN
* 54	500-447Z	CORD	1	(CORD ARMOR D8.8) FOR SUI
* 54	500-439Z	CORD	1	(CORD ARMOR D8.8) FOR AUS
55	930-108	CORD CLIP	1	TILL 1.2001
55A	937-631	CORD CLIP	1	SINCE 2.2001
56	305-720	TAPPING SCREW (W/FLANGE) D4X12	2	TILL 1.2001
56A	984-750	TAPPING SCREW (W/FLANGE) D4X16	2	SINCE 2.2001
57	980-063	TERMINAL	1	FOR CORD
58	953-327	CORD ARMOR D8.8	1	
* 59	314-603	SWITCH (1P SOLDER TYPE)	1	
* 59	955-509	SWITCH (1P SCREW TYPE)	1	FOR AUS
60	984-750	TAPPING SCREW (W/FLANGE) D4X16	1	

STANDARD ACCESSORIES

G 13V

ITEM NO.	CODE NO.	DESCRIPTION	NO. USED	REMARKS
501	938-332Z	WRENCH	1	
502	302-142	SIDE HANDLE	1	

OPTIONAL ACCESSORIES

ITEM NO.	CODE NO.	DESCRIPTION	NO. USED	REMARKS
601	937-825Z	RUBBER PAD	1	
602	937-826Z	WASHER NUT	1	
603	314-062	SANDING DISCS 125MM C-P16 (10 PCS.)	1	
604	314-063	SANDING DISCS 125MM C-P20 (10 PCS.)	1	
605	314-064	SANDING DISCS 125MM C-P24 (10 PCS.)	1	
606	314-065	SANDING DISCS 125MM C-P30 (10 PCS.)	1	
607	314-066	SANDING DISCS 125MM C-P36 (10 PCS.)	1	
608	314-067	SANDING DISCS 125MM C-P40 (10 PCS.)	1	
609	314-068	SANDING DISCS 125MM C-P50 (10 PCS.)	1	
610	314-069	SANDING DISCS 125MM C-P60 (10 PCS.)	1	
611	314-070	SANDING DISCS 125MM C-P80 (10 PCS.)	1	
612	314-071	SANDING DISCS 125MM C-P100 (10 PCS.)	1	
613	314-072	SANDING DISCS 125MM C-P120 (10 PCS.)	1	
614	310-392	DIAMOND WHEEL (SEGMENT) 125MM-D22 HOLE	1	
615	310-338	SUPER WASHER	1	