

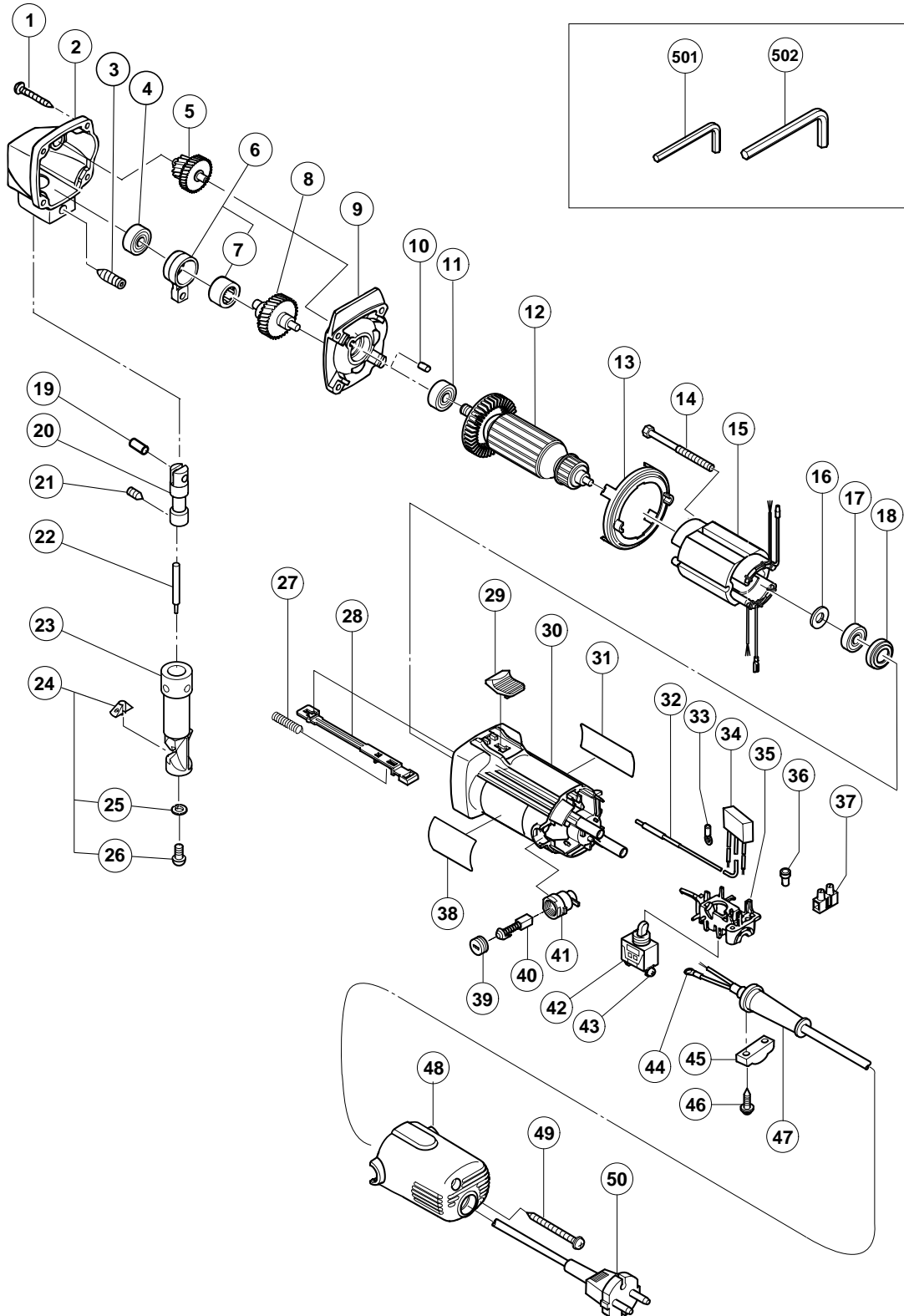
ELECTRIC TOOL PARTS LIST

■ NIBBLER

2003 • 9 • 25

Model CN 16SA

(E1)



PARTS

CN 16SA

ITEM NO.	CODE NO.	DESCRIPTION	NO. USED	REMARKS
1	957-580	TAPPING SCREW D5X30	4	
2	998-033	GEAR COVER	1	
3	998-008	HEX. SOCKET SET SCREW M8X20	1	
4	608-VVM	BALL BEARING 608VVC2PS2L	1	
5	998-036	SECOND PINION AND GEAR SET	1	
6	998-004	CONNECTING ROD ASS'Y	1	INCLUD. 7
7	993-163	NEEDLE BEARING (M152112)	1	
8	998-035	SPINDLE AND GEAR SET	1	
9	998-032	INNER COVER	1	
10	931-701	BEARING LOCK	1	
11	608-VVM	BALL BEARING 608VVC2PS2L	1	
* 12	360-622C	ARMATURE 110V	1	
* 12	360-622U	ARMATURE ASS'Y 120V-127V	1	INCLUD. 11, 16, 17
* 12	360-622E	ARMATURE 220V-230V	1	
* 12	360-622F	ARMATURE 240V	1	
13	306-840	FAN GUIDE	1	
14	982-021	HEX. HD. TAPPING SCREW D4X70	2	
* 15	340-567C	STATOR 110V	1	
* 15	340-567D	STATOR 120V-127V	1	
* 15	340-567E	STATOR 220V-230V	1	
* 15	340-567F	STATOR 240V	1	
16	942-204	WASHER	1	
17	626-VVM	BALL BEARING 626VVC2PS2L	1	
18	309-929	RUBBER BUSHING	1	
19	993-546	PIN D6	1	
20	998-034	PISTON	1	
21	998-037	HEX. SOCKET SET SCREW M5X6	1	
* 22	998-030	PUNCH	1	
* 22	998-041	PUNCH (A)	1	FOR TPE
23	998-038	DIE HOLDER	1	
24	998-039	DIE ASS'Y	1	INCLUD. 25, 26
25	949-451	SPRING WASHER M3 (10 PCS.)	2	
26	949-206	MACHINE SCREW M3X14 (10 PCS.)	2	
27	314-429	SPRING	1	
28	314-427	SLIDE BAR	1	
29	314-428	SLIDE KNOB	1	
30	314-438	HOUSING ASS'Y	1	INCLUD.18
* 31		NAME PLATE	1	
* 32	314-854	EARTH TERMINAL	1	FOR NOISE SUPPRESSOR
33	311-741	TERMINAL	1	
* 34	994-273	NOISE SUPPRESSOR	1	FOR TPE, HKG, NGU, NZL, AUS, GBR, SAF, EUROPE, NOR, SWE, DEN, FIN, SUI, KOR
35	314-432	SWITCH HOLDER	1	
* 36	959-140	CONNECTOR 50091 (10 PCS.)	1	EXCEPT FOR TPE, HKG, NGU, NZL, AUS, GBR, SAF, EUROPE, NOR, SWE, DEN, FIN, SUI, KOR
* 37	938-307	PILLAR TERMINAL	1	FOR TPE, HKG, NGU, NZL, AUS, GBR, SAF, EUROPE, NOR, SWE, DEN, FIN, SUI, KOR
38		HITACHI LABEL	1	
39	936-551	BRUSH CAP	2	
40	999-021	CARBON BRUSH (1 PAIR)	2	
41	313-777	BRUSH HOLDER	2	

