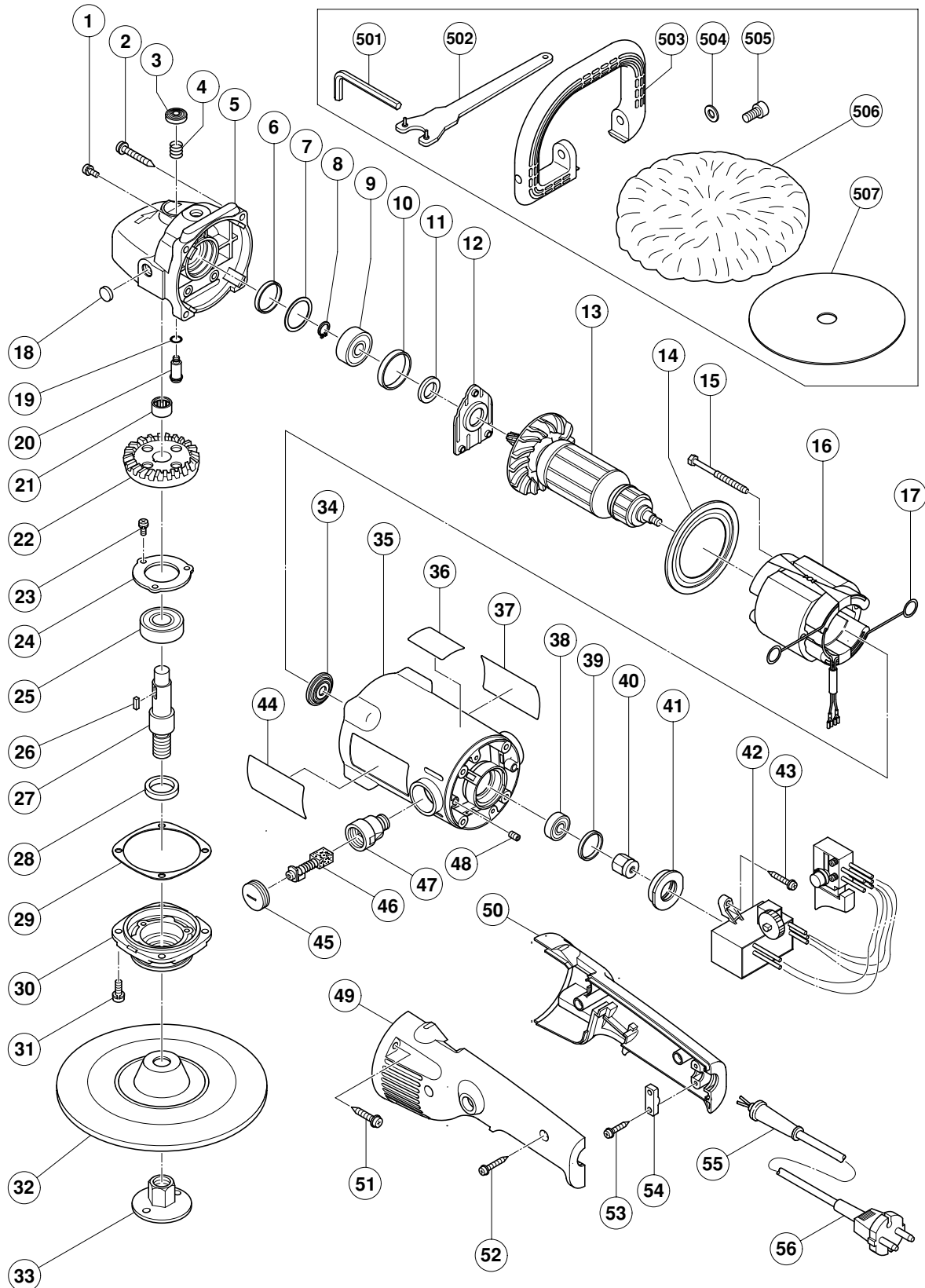


## ELECTRIC TOOL PARTS LIST

### ■ ELECTRONIC SANDER POLISHER 2002 · 6 · 20 Model SP 18VA (E1)



## PARTS

SP 18VA

| ITEM NO. | CODE NO. | DESCRIPTION                               | NO. USED | REMARKS                |
|----------|----------|-------------------------------------------|----------|------------------------|
| 1        | 303-255  | SEAL LOCK SCREW (W/SP. WASHER) M4X10      | 3        |                        |
| 2        | 305-507  | TAPPING SCREW (W/FLANGE) D5X30            | 4        |                        |
| 3        | 306-888  | PUSHING BUTTON                            | 1        |                        |
| 4        | 306-889  | SPRING                                    | 1        |                        |
| 5        | 320-936  | GEAR COVER ASS'Y                          | 1        | INCLUD.3,4,18-21       |
| 6        | 315-055  | SEAL RING (A)                             | 1        |                        |
| 7        | 315-054  | WASHER (A)                                | 1        |                        |
| 8        | 939-540  | RETAINING RING FOR D10 SHAFT (10 PCS.)    | 1        |                        |
| 9        | 620-0DD  | BALL BEARING 6200DDCMPS2L                 | 1        |                        |
| 10       | 315-053  | RUBBER RING (A)                           | 1        |                        |
| 11       | 315-052  | FELT PACKING (B)                          | 1        |                        |
| 12       | 315-051  | BEARING COVER (B)                         | 1        |                        |
| * 13     | 360-576U | ARMATURE ASS'Y 110V-120V                  | 1        | INCLUD.9,11,34,38      |
| * 13     | 360-576E | ARMATURE 220V-240V                        | 1        |                        |
| 14       | 315-046  | FAN GUIDE                                 | 1        |                        |
| 15       | 961-501  | HEX. HD. TAPPING SCREW D5X60              | 2        |                        |
| * 16     | 340-526C | STATOR ASS'Y 110V                         | 1        | INCLUD.17              |
| * 16     | 340-526D | STATOR ASS'Y 120V                         | 1        | INCLUD.17              |
| * 16     | 340-526E | STATOR ASS'Y 220V-240V                    | 1        | INCLUD.17              |
| 17       | 930-703  | BRUSH TERMINAL                            | 2        |                        |
| 18       | 315-049  | FELT WASHER                               | 1        |                        |
| 19       | 320-218  | O-RING                                    | 1        |                        |
| 20       | 315-050  | LOCK PIN                                  | 1        |                        |
| 21       | 871-397  | NEEDLE BEARING (NTN HK1210)               | 1        |                        |
| 22       | 320-937  | GEAR                                      | 1        |                        |
| 23       | 987-201  | SEAL LOCK SCREW (W/SP. WASHER) M4X10      | 3        |                        |
| 24       | 937-077  | BEARING COVER (A)                         | 1        |                        |
| 25       | 620-2DD  | BALL BEARING 6202DDCMPS2L                 | 1        |                        |
| 26       | 940-533  | FEATHER KEY 3X3X10                        | 1        |                        |
| * 27     | 320-943  | SPINDLE                                   | 1        |                        |
| * 27     | 320-944  | SPINDLE                                   | 1        | FOR USA,CAN            |
| 28       | 315-062  | FELT PACKING (A)                          | 1        |                        |
| 29       | 315-060  | SEAL PACKING                              | 1        |                        |
| 30       | 315-061  | PACKING GLAND                             | 1        |                        |
| 31       | 315-636  | SEAL LOCK SCREW (W/SP.WASHER)M5X14(BLACK) | 4        |                        |
| * 32     | 953-255  | RUBBER PAD (D16 HOLE)                     | 1        | FOR USA,CAN            |
| * 32     | 953-247Z | RUBBER PAD (D14 HOLE)                     | 1        | <del>FOR USA,CAN</del> |
| * 33     | 953-246Z | WASHER NUT M14                            | 1        |                        |
| * 33     | 953-254P | WASHER NUT 5/8"-11UNC                     | 1        | FOR USA,CAN            |
| 34       | 315-047  | DUST SEAL                                 | 1        |                        |
| 35       | 320-945  | HOUSING ASS'Y                             | 1        | INCLUD.39,41,47,48     |
| 36       | 320-948  | SETTING LABEL                             | 1        |                        |
| * 37     |          | NAME PLATE                                | 1        |                        |
| 38       | 608-VVM  | BALL BEARING 608VVC2PS2L                  | 1        |                        |
| 39       | 995-662  | RUBBER RING                               | 1        |                        |
| 40       | 318-721  | MAGNET                                    | 1        |                        |
| 41       | 320-946  | BEARING BUSHING                           | 1        |                        |
| * 42     | 320-941  | CONTROLLER SWITCH                         | 1        |                        |
| * 42     | 320-940  | CONTROLLER SWITCH                         | 1        | FOR GBR (110V),USA,CAN |
| 43       | 305-095  | TAPPING SCREW (W/FLANGE) D4X20            | 2        |                        |
| 44       |          | HITACHI LABEL                             | 1        |                        |

# PARTS

SP 18VA

| ITEM NO. | CODE NO. | DESCRIPTION                            | NO. USED | REMARKS                               |  |
|----------|----------|----------------------------------------|----------|---------------------------------------|--|
| 45       | 945-161  | BRUSH CAP                              | 2        |                                       |  |
| 46       | 999-043  | CARBON BRUSH (1 PAIR)                  | 2        |                                       |  |
| 47       | 958-900  | BRUSH HOLDER                           | 2        |                                       |  |
| 48       | 938-477  | HEX. SOCKET SET SCREW M5X8             | 2        |                                       |  |
| 49       | 320-939  | HANDLE (B)                             | 1        |                                       |  |
| 50       | 320-938  | HANDLE (A)                             | 1        |                                       |  |
| 51       | 302-089  | TAPPING SCREW (W/FLANGE) D5X20 (BLACK) | 4        |                                       |  |
| 52       | 302-086  | TAPPING SCREW (W/FLANGE) D4X20 (BLACK) | 2        |                                       |  |
| 53       | 984-750  | TAPPING SCREW (W/FLANGE) D4X16         | 2        |                                       |  |
| 54       | 937-631  | CORD CLIP                              | 1        |                                       |  |
| 55       | 953-327  | CORD ARMOR D8.8                        | 1        |                                       |  |
| * 56     | 500-234Z | CORD                                   | 1        | (CORD ARMOR D8.8)                     |  |
| * 56     | 500-435Z | CORD                                   | 1        | (CORD ARMOR D8.8) FOR HKG,GBR (230V)  |  |
| * 56     | 500-439Z | CORD                                   | 1        | (CORD ARMOR D8.8) FOR NZL,AUS         |  |
| * 56     | 500-396Z | CORD                                   | 1        | (CORD ARMOR D8.8) FOR GBR (110V)      |  |
| * 56     | 500-247Z | CORD                                   | 1        | (CORD ARMOR D8.8) FOR NOR,SWE,DEN,FIN |  |
| * 56     | 500-447Z | CORD                                   | 1        | (CORD ARMOR D8.8) FOR SUI             |  |
| * 56     | 500-241Z | CORD                                   | 1        | (CORD ARMOR D8.8) FOR USA,CAN         |  |
|          |          |                                        |          |                                       |  |
|          |          |                                        |          |                                       |  |
|          |          |                                        |          |                                       |  |
|          |          |                                        |          |                                       |  |
|          |          |                                        |          |                                       |  |
|          |          |                                        |          |                                       |  |
|          |          |                                        |          |                                       |  |
|          |          |                                        |          |                                       |  |
|          |          |                                        |          |                                       |  |
|          |          |                                        |          |                                       |  |
|          |          |                                        |          |                                       |  |
|          |          |                                        |          |                                       |  |
|          |          |                                        |          |                                       |  |
|          |          |                                        |          |                                       |  |
|          |          |                                        |          |                                       |  |
|          |          |                                        |          |                                       |  |
|          |          |                                        |          |                                       |  |
|          |          |                                        |          |                                       |  |
|          |          |                                        |          |                                       |  |
|          |          |                                        |          |                                       |  |
|          |          |                                        |          |                                       |  |
|          |          |                                        |          |                                       |  |
|          |          |                                        |          |                                       |  |
|          |          |                                        |          |                                       |  |
|          |          |                                        |          |                                       |  |
|          |          |                                        |          |                                       |  |
|          |          |                                        |          |                                       |  |
|          |          |                                        |          |                                       |  |
|          |          |                                        |          |                                       |  |

### STANDARD ACCESSORIES

SP 18VA

| ITEM NO. | CODE NO. | DESCRIPTION                           | NO. USED | REMARKS                    |
|----------|----------|---------------------------------------|----------|----------------------------|
| 501      | 955-857  | HEX. BAR WRENCH 8MM                   | 1        |                            |
| 502      | 937-913Z | WRENCH                                | 1        |                            |
| 503      | 320-949  | LOOP HANDLE                           | 1        |                            |
| 504      | 949-434  | BOLT WASHER M10 (10 PCS.)             | 2        |                            |
| 505      | 949-844  | HEX. SOCKET HD. BOLT M10X20 (10 PCS.) | 2        |                            |
| * 506    | 949-103  | WOOL BONNET 180MM                     | 1        | EXCEPT FOR FRA,SUI,USA,CAN |
| * 507    | 314-090  | SANDING DISCS 180MM C-P50 (10 PCS.)   | 1        | EXCEPT FOR FRA,SUI,USA,CAN |
|          |          |                                       |          |                            |
|          |          |                                       |          |                            |
|          |          |                                       |          |                            |
|          |          |                                       |          |                            |
|          |          |                                       |          |                            |
|          |          |                                       |          |                            |
|          |          |                                       |          |                            |
|          |          |                                       |          |                            |

### OPTIONAL ACCESSORIES

| ITEM NO. | CODE NO. | DESCRIPTION                          | NO. USED | REMARKS             |
|----------|----------|--------------------------------------|----------|---------------------|
| 601      | 314-084  | SANDING DISCS 180MM C-P16 (10 PCS.)  | 1        |                     |
| 602      | 314-085  | SANDING DISCS 180MM C-P20 (10 PCS.)  | 1        |                     |
| 603      | 314-086  | SANDING DISCS 180MM C-P24 (10 PCS.)  | 1        |                     |
| 604      | 314-088  | SANDING DISCS 180MM C-P36 (10 PCS.)  | 1        |                     |
| 605      | 314-089  | SANDING DISCS 180MM C-P40 (10 PCS.)  | 1        |                     |
| 606      | 314-090  | SANDING DISCS 180MM C-P50 (10 PCS.)  | 1        |                     |
| 607      | 314-091  | SANDING DISCS 180MM C-P60 (10 PCS.)  | 1        |                     |
| 608      | 314-093  | SANDING DISCS 180MM C-P100 (10 PCS.) | 1        |                     |
| * 609    | 949-103  | WOOL BONNET 180MM                    | 1        | FOR FRA,SUI,USA,CAN |
| 610      | 994-322  | SIDE HANDLE                          | 1        |                     |
|          |          |                                      |          |                     |
|          |          |                                      |          |                     |
|          |          |                                      |          |                     |
|          |          |                                      |          |                     |
|          |          |                                      |          |                     |
|          |          |                                      |          |                     |
|          |          |                                      |          |                     |
|          |          |                                      |          |                     |
|          |          |                                      |          |                     |
|          |          |                                      |          |                     |
|          |          |                                      |          |                     |
|          |          |                                      |          |                     |
|          |          |                                      |          |                     |
|          |          |                                      |          |                     |
|          |          |                                      |          |                     |
|          |          |                                      |          |                     |
|          |          |                                      |          |                     |
|          |          |                                      |          |                     |
|          |          |                                      |          |                     |
|          |          |                                      |          |                     |
|          |          |                                      |          |                     |
|          |          |                                      |          |                     |
|          |          |                                      |          |                     |
|          |          |                                      |          |                     |