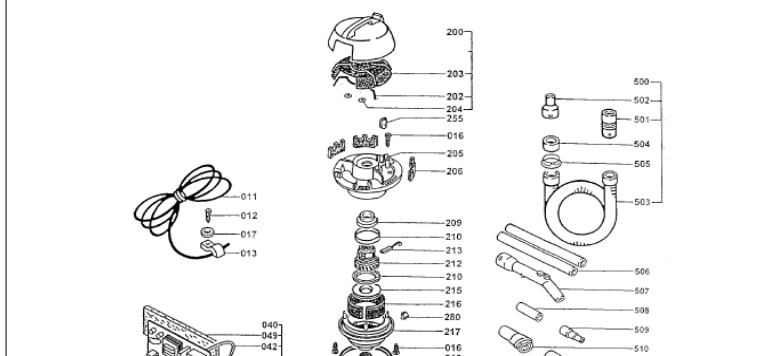
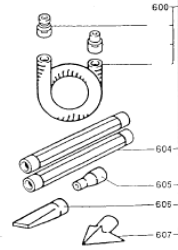
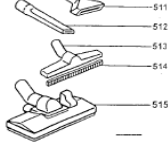
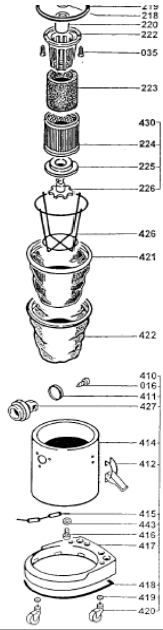
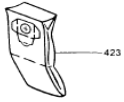
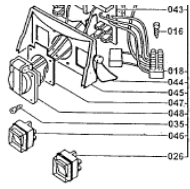


Pos	Item number	Description	no used	Remarks
11	710002	CORD 8M 3 X 1.5 H05VV-F	1	
12	710003	SCREW 4,8X19 DIN 7981	1	
13	710004	CORD HOLDER	1	
16	710032	SCREW 3,5X19 DIN7981	10	
17	710095	WASHER D.5X11X1	1	
18	710006	CONNECTOR BLOCK PA44/4	1	
26	710011	SWITCH	1	
35	710045	SCREW 3,5X16 DIN 7982	7	
40	710005	AUTOM. SWITCH SET	**	
42	710013	INTERNAL WIRE 190 L	1	
43	710070	PRINTBOARD WDE+FSE	1	
44	710084	O-RING FOR PRINT ASS'Y	1	
45	710012	PLUGBOX HOLDER	1	
46	710007	SWITCH M/A WD	1	
47	710009	PLUGBOX PAKKING	1	
48	710008	PLUGBOX 2P+T	1	
200	710029	GRIPCOVER	1	
202	710031	PAKKING	1	
203	710030	SOUND ISOLATION (3 PCS)	1	
204	710097	QUICK FAST FOR PIN D5	4	
205	710033	AIRCAP	1	
209	710034A	RING	1	
210	710035	RING	2	
212	710036	MOTOR 220 VOLT WDE	1	
213	710037A	CARBON BRUSH	**	
216	710039	MOTORISOLATION	1	
217	710040	MOTOR HOUSING	1	
218	710041	MOTORFILTER	1	
219	710042	RING	1	
220	710043	VLOTTER	1	
222	710044	VLOTTERHOLDER	1	
223	710094	FOAM FILTER WDE3600	1	
224	710060	CARTRIDGE FILTER 15 MICRON	1	
225	710046	FILTERSUPPORT (BLACK)	1	
226	710047	FILTERKNOP	1	
255	710201	PLUG P.P NEW	1	
280	710202	BULKHEAD	1	
401	710062	BOX COVER	1	
410	710203	VAT ASS'Y INOX WDE3600	**	
411	710204	LOCKING RING WDE3600	1	
412	710205	LOCKING LEVER ZINC/PLATED	2	
414	710206	VAT INOX	1	
415	710207	CHAIN IX	1	
416	710208	CHAIN IX	1	
417	710209	CARRIAGE FOR INOX	1	
418	710210	BUMPER WD INOX BLACK	1	
419	710211	WASHER 15X28X3,5	4	
420	710212	SWIVEL WHEEL WDE3600	4	
421	421000	DUST FILTERBAG WDE3600 (TEXTILE)	1	
422	715678	DUST FILTERBAG WDE3600 (NYLON)	**	
423	423000	PAPER DUSTBAG WDE3600 (1 PCS)	1	
426	710213	BAG TENSIONER BASKET FOR INOX WD	1	
427	710215	HOSE CONNECTOR WDE3600	1	
443	710096	WASHER D.6X18X2	1	
500	710091	VACUUMHOSESET COMPLETE D.36 3 M**	**	
501	710055	CONNECTOR PIECE	1	
502	710057	CONNECTOR PIECE	1	
506	710059	SUCTION HOSE D.36MM (1 PC)	2	
507	710051	GRIP WITH AIR ADJUSTING	1	
508	710093	ADAPTER 36/36 70L	1	
509	710052	REDUCER 36/32/25MM	1	
510	710048	FURNITURE BRUSH	1	
511	710049	VACUUM MOUTH D.36MM	1	
512	710050	VACUUM MOUTH D.36 MM	1	
513	710058	VACUUM MOUTH FOR FLUID	1	
514	710069	RUBBER STRIP 290MM FOR 710058 (1 P	2	
515	710092	VACUUM MOUTH (WIDE) WITH WHEEL	1	
600	710064	VACUUM HOSE D.58 1,50M COMPLETE	**	
604	710065	SUCTION TUBE D.58 MM (1 PC)	**	
605	710068	HINGE PIECE 58/36MM	**	
606	710066	VACUUM MOUTH D.58 MM	**	
607	710067	VACUUM MOUTH FOR LEAVES D.58 MM	**	

WDE3600

HITACHI
Inspire the Next

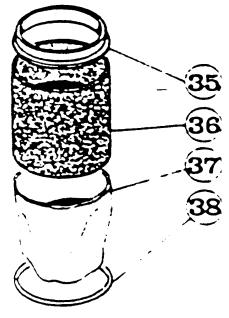
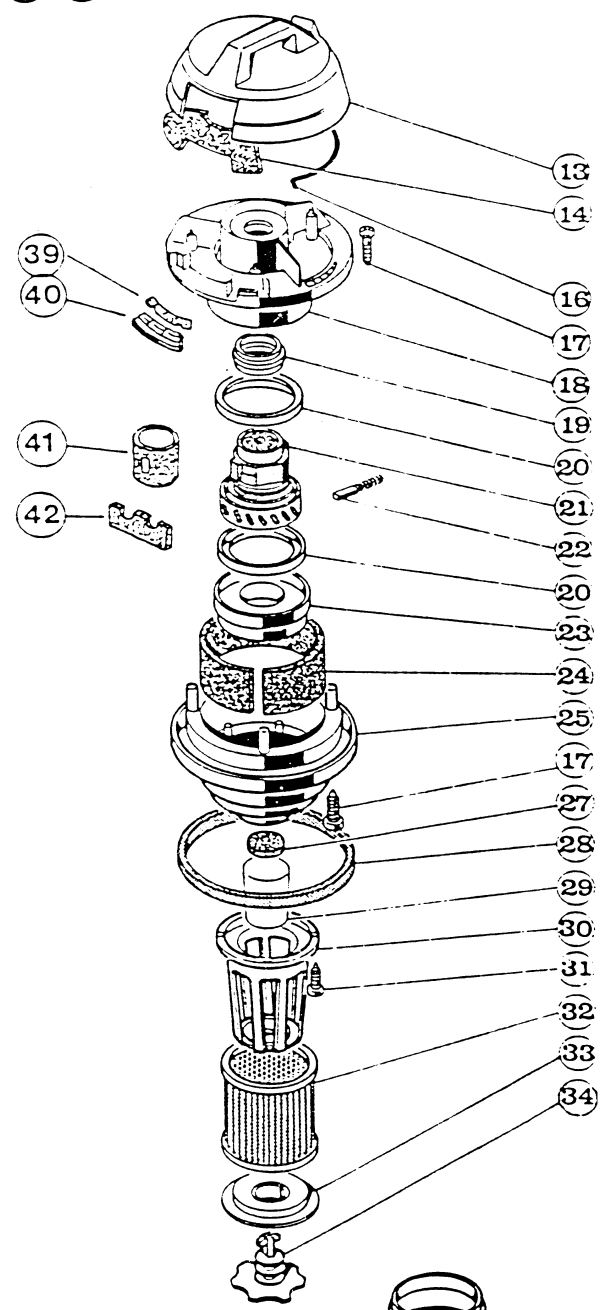
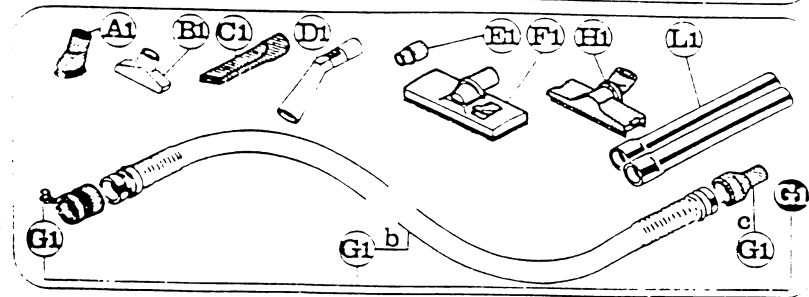
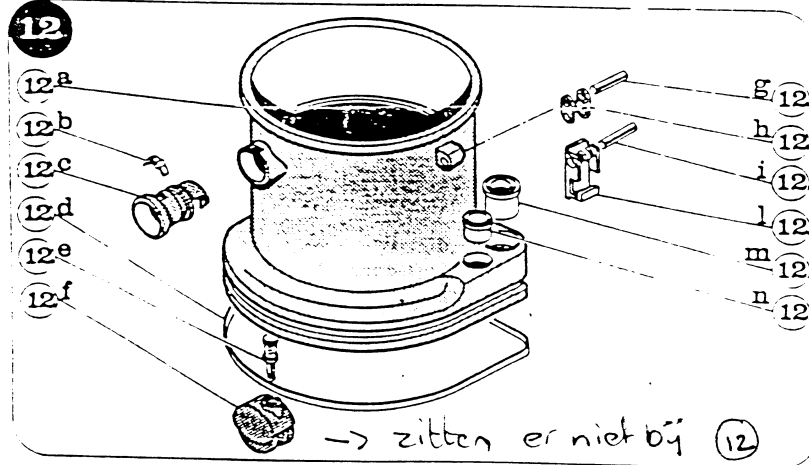
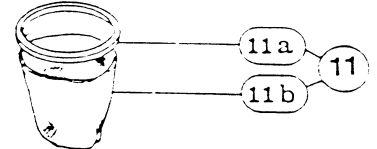
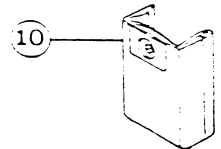
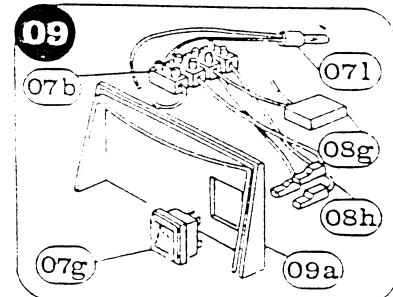
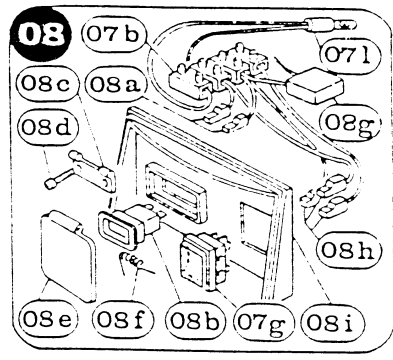
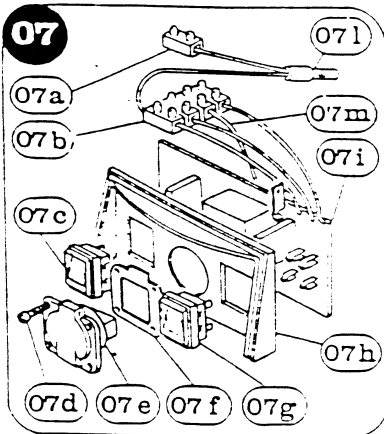
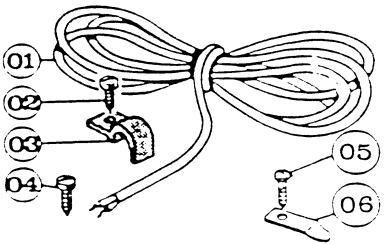




WDE1200

WD |

Serie 03



925094

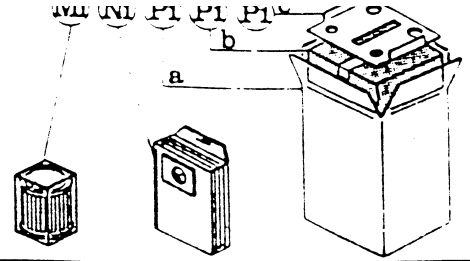
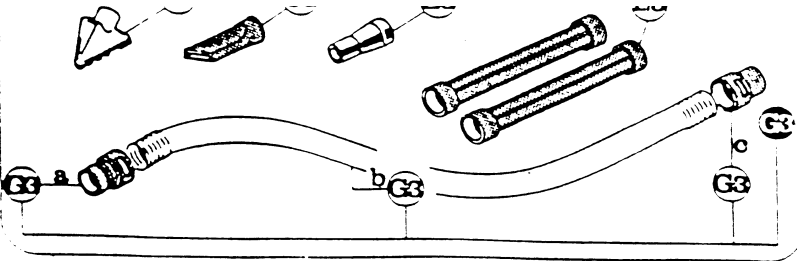
01

B3 C3 E3 L3

M3 N3 P3 Q3 R3 S3

Part List WDE1200

Montem
elettrodomestici



Part List WDE1200

POS	CODE NR	DESCRIPTION	USED QTY	REMARKS
1	710002	CORD 8M 3 X 1,5 H05VV-F	1	
2	710003	SCREW 4,8X19 DIN 7981	1	
3	710004	CORD HOLDER	1	
7	710005	AUTOM. SWITCH SET	**	
07b	710006	CONNECTOR BLOCK PA44/3	1	
07c	710007	SWITCH M/A WD	1	
07e	710008	PLUGBOX 2P+T	1	
07f	710009	PLUGBOX PAKKING	1	
07g	710011	SWITCH	1	
07h	710012	PLUGBOX HOLDER	1	
07i	710070	PRINTBOARD	1	
**	710084	O-RING FOR PRINT ASS'Y	1	
07m	710013	INTERNAL WIRE	1	
10	710014	PAPER DUST BAG (1 PC)	**	OPTIONAL
11	710015	DUST FILTERBAG (TEXTILE)	**	OPTIONAL
11a	710086	DUSTFILTERBAG (NYLON)	**	OPTIONAL
12	710016	HOUSING	1	
12b	710018	KNOP	1	
12c	710019	HOSE CONNECTOR	1	
12d	710020	BUMPER (GRAY)	1	
12f	710022	TURNWHEEL + WHEELPIN	5	
12g	710023	HINGE PIN	2	
12h	710024	HINGEPIN HOLDER	2	
12i	710025	HINGE PIN	2	
12l	710026	FASTENCLIP	2	
12m	710027	HOLDER D.58	2	
12n	710028	HOLDER D.36	4	
13	710029	GRIPCOVER	1	
14	710030	SOUND ISOLATION (3PCS)	1	
16	710031	PAKKING	1	
17	710032	SCREW 3,5X19 DIN7981	10	
18	710033	AIRCAP	1	
19	710034A	RING	1	
20	710035	RING	2	
21	710036	MOTOR 220 VOLT	1	
22	710037	CARBON BRUSH (1 PCS)	2	
23	710038	DISTANCE HOLDER	1	
24	710039	MOTORISOLATION	1	
25	710040	MOTOR HOUSING	1	
27	710041	MOTORFILTER	1	
28	710042	RING	1	
29	710043	VLOTTER	1	
30	710044	VLOTTERHOLDER	1	
31	710045	SCREW 3,5X16 DIN 7983	7	

Part List WDE1200

32	710060	CARTRIDGE FILTER 15 MICRON	1	
32	710088	HEPA CARTRIDGE FILTER 0,3 MICRON	1	OPTIONAL
33	710046	FILTERSUPPORT (BLACK)	1	
34	710047	FILTERKNOP	1	

Part List WDE1200

STANDARD ACCESSOIRES				
A1	710048	FURNETURE BRUSH	1	
B1	710049	VACUUM MOUTH D.36	1	
C1	710050	VACUUM MOUTH D.36	1	
D1	710051	GRIP WITH AIR ADJUSTING	1	
E1	710052	REDUCER 36/32/25MM	1	
E3	710068	HINGE PIECE 58/36MM	1	
F1	710053	VACUUM MOUTH (WIDE)	1	
G1	710054	VACUUMHOSESET COMPLETE D.36 (2 m)	1	OPTIONAL
G1a	710055	CONNECTOR PIECE	1	
G1b	710056	VACUUM HOSE D.36 1,70 M	1	
G1c	710057	CONNECTOR PIECE	1	
H1	710058	VACCUM MOUTH FOR FLUID	1	
H2	710069	RUBBER STRIP FOR 710058(1 PC)	2	
L1	710059	SUCTION HOSE D.36 (1 PC)	2	
M1	710060	CARTRIDGE FILTER 15 MICRON	1	
OPTIONAL ACCESSOIRES				
**	710087	BASKET WITH STRAP	1	
**	710089	CONNECTOR PIECE (DUO)	1	
B3	710067	VACUUM MOUTH FOR LEAVES D.58	1	
C3	710066	VACUUM MOUTH D.58	1	
G2	710085	VACUUMHOSESET COMPLETE D.36 5M	1	
**	710083	PLASTIC RING FOR HOSE CONNECTION	2	
G3	710064	VACUUM HOSE COMPLETE D.58 1,50M	1	
L3	710065	SUCTION TUBE D.58 (1 PC)	2	
M1	710088	HEPA CARTRIDGE FILTER 0,3 MICRON	1	

POS	CODENR	DESCRIPTION	WDE1200	USED QTY	REMARKS
1	710002	CORD 8M 3 X 1,5 H05VV-F	WDE1200	1	
2	710003	SCREW 4,8X19 DIN 7981	WDE1200	1	
3	710004	CORD HOLDER	WDE1200	1	
7	710005	AUTOM. SWITCH SET	WDE1200	**	
07b	710006	CONNECTOR BLOCK PA44/3	WDE1200	1	
07c	710007	SWITCH M/A WD	WDE1200	1	
07e	710008	PLUGBOX 2P+T	WDE1200	1	
07f	710009	PLUGBOX PAKKING	WDE1200	1	
07g	710011	SWITCH	WDE1200	1	
07h	710012	PLUGBOX HOLDER	WDE1200	1	
07i	710070	PRINTBOARD	WDE1200	1	
**	710084	O-RING FOR PRINT ASS'Y	WDE1200	1	
07m	710013	INTERNAL WIRE	WDE1200	1	
10	710014	PAPER DUST BAG (1 PC)	WDE1200	**	OPTIONAL
11	710015	DUST FILTERBAG (TEXTILE)	WDE1200	**	OPTIONAL
11a	710086	DUSTFILTERBAG (NYLON)	WDE1200	**	OPTIONAL
12	710016	HOUSING	WDE1200	1	
12b	710018	KNOP	WDE1200	1	
12c	710019	HOSE CONNECTOR	WDE1200	1	
12d	710020	BUMPER (GRAY)	WDE1200	1	
12f	710022	TURNWHEEL + WHEELPIN	WDE1200	5	
12g	710023	HINGE PIN	WDE1200	2	
12h	710024	HINGEPIN HOLDER	WDE1200	2	
12i	710025	HINGE PIN	WDE1200	2	
12l	710026	FASTENCLIP	WDE1200	2	
12m	710027	HOLDER D.58	WDE1200	2	
12n	710028	HOLDER D.36	WDE1200	4	
13	710029	GRIPCOVER	WDE1200	1	
14	710030	SOUND ISOLATION (3PCS)	WDE1200	1	
16	710031	PAKKING	WDE1200	1	
17	710032	SCREW 3,5X19 DIN7981	WDE1200	10	
18	710033	AIRCAP	WDE1200	1	
19	710034A	RING	WDE1200	1	
20	710035	RING	WDE1200	2	
21	710036	MOTOR 220 VOLT	WDE1200	1	
22	710037	CARBON BRUSH (1 PCS)	WDE1200	2	
23	710038	DISTANCE HOLDER	WDE1200	1	
24	710039	MOTORISOLATION	WDE1200	1	
25	710040	MOTOR HOUSING	WDE1200	1	
27	710041	MOTORFILTER	WDE1200	1	
28	710042	RING	WDE1200	1	
29	710043	VLOTTER	WDE1200	1	
30	710044	VLOTTERHOLDER	WDE1200	1	
31	710045	SCREW 3,5X16 DIN 7983	WDE1200	7	
32	710060	CARTRIDGE FILTER 15 MICRO	WDE1200	1	
32	710088	HEPA CARTRIDGE FILTER 0,3	WDE1200	1	OPTIONAL
33	710046	FILTERSUPPORT (BLACK)	WDE1200	1	
34	710047	FILTERKNOP	WDE1200	1	
A1	710048	FURNETURE BRUSH	WDE1200	1	
B1	710049	VACUUM MOUTH D.36	WDE1200	1	