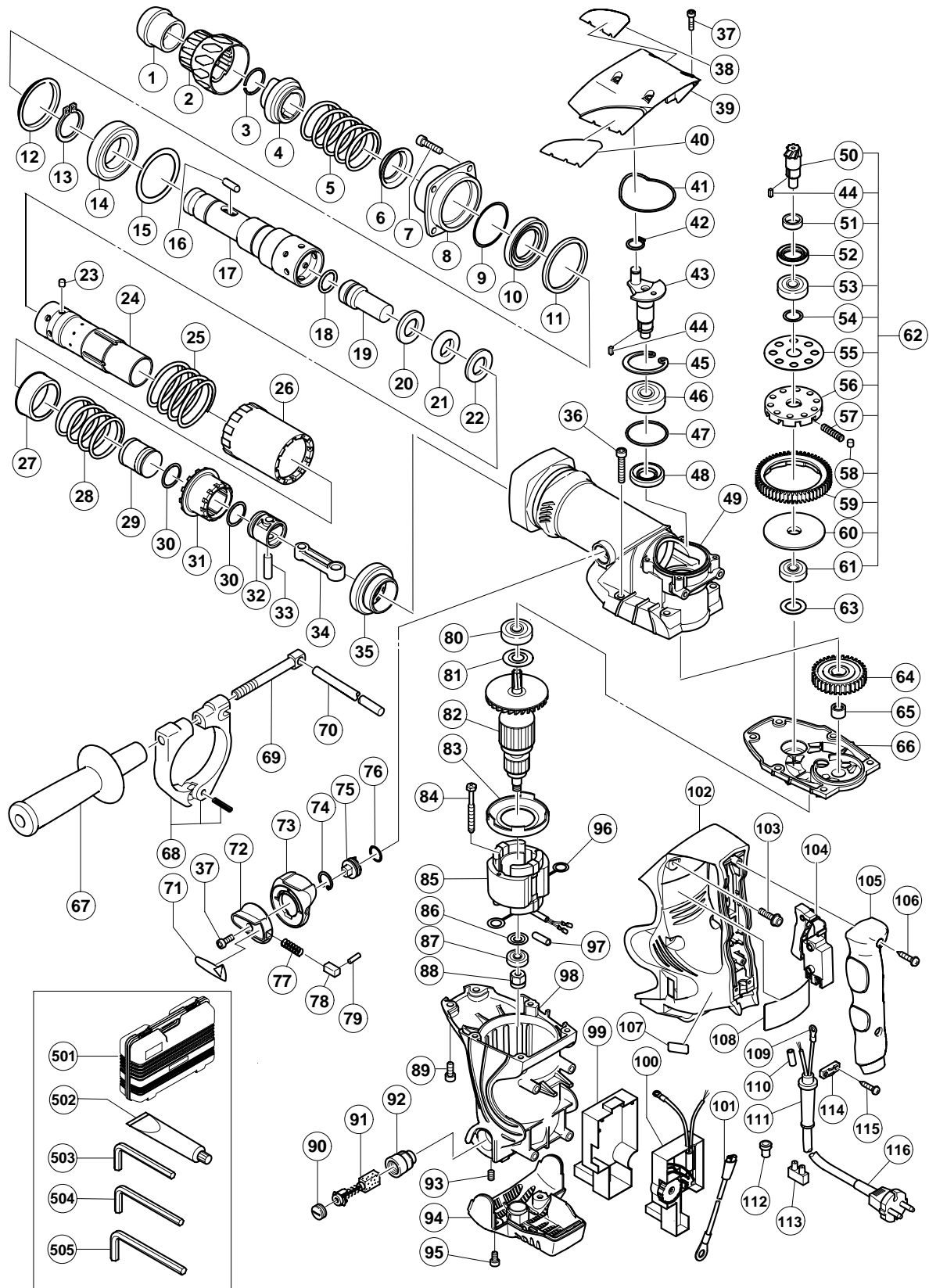


ELECTRIC TOOL PARTS LIST

■ ROTARY HAMMER Model DH 40MR

2002 • 9 • 30

(E1)



PARTS

DH 40MR

ITEM NO.	CODE NO.	DESCRIPTION	NO. USED	REMARKS
1	321-306	FRONT CAP	1	
2	321-305	GRIP	1	
3	318-590	STOPPER RING	1	
4	321-304	NEEDLE HOLDER	1	
5	321-303	RETAINER SPRING	1	
6	321-302	SPRING HOLDER (A)	1	
7	981-942	SEAL LOCK HEX. SOCKET HD. BOLT M6X25	4	
8	321-300	FRONT COVER	1	
9	956-996	O-RING (1AS-60)	1	
10	321-301	OIL SEAL	1	
11	981-859	URETHANE RING	1	
12	315-868	URETHANE RING HOLDER	1	
13	948-131	RETAINING RING FOR D35 SHAFT	1	
14	600-7DD	BALL BEARING 6007DDUAV2S	1	
15	321-297	BEARING WASHER	1	
16	313-421	NEEDLE ROLLER D8X20	2	
17	321-286	RETAINER SLEEVE	1	
18	313-396	O-RING (C)	1	
19	321-287	SECOND HAMMER	1	
20	321-288	DAMPER WASHER	1	
21	321-289	DAMPER	1	
22	321-290	DAMPER HOLDER	1	
23	313-057	NEEDLE PIN D6X6	4	
24	321-291	CYLINDER	1	
25	321-298	LOCK SPRING	1	
26	321-299	LOCK SLEEVE	1	
27	321-293	SPRING HOLDER (B)	1	
28	321-294	CLUTCH SPRING	1	
29	321-292	STRIKER	1	
30	986-104	O-RING	2	
31	321-295	CLUTCH	1	
32	321-284	PISTON	1	
33	980-708	PISTON PIN	1	
34	321-285	CONNECTING ROD	1	
35	321-296	BEVEL GEAR	1	
36	986-940	SEAL LOCK HEX. SOCKET HD. BOLT M6X45	4	
37	983-162	SEAL LOCK HEX. SOCKET HD. BOLT M4X12	5	
38		HITACHI LABEL	1	
39	321-315	CRANK COVER	1	
40		HITACHI LABEL	1	
41	321-314	RUBBER SEAL	1	
42	939-540	RETAINING RING FOR D10 SHAFT (10 PCS.)	1	
43	321-275	CRANK SHAFT	1	
44	944-109	FEATHER KEY 3X3X8	2	
45	948-391	RETAINING RING FOR D40 HOLE	1	
46	620-3DD	BALL BEARING 6203DDCMPS2L	1	
47	996-363	O-RING (S-40)	1	
48	321-274	OIL SEAL (B)	1	
49	321-273	CYLINDER CRANK CASE	1	
50	321-278	BEVEL PINION	1	
51	321-279	COLLAR	1	

PARTS

DH 40MR

ITEM NO.	CODE NO.	DESCRIPTION	NO. USED	REMARKS
52	313-050	OIL SEAL (A)	1	
53	600-2DD	BALL BEARING 6002DDCMPS2L	1	
54	313-058	WASHER	1	
55	313-053	WASHER (A)	1	
56	321-281	GEAR HOLDER	1	
57	321-282	SPRING (C)	10	
58	320-343	NEEDLE	10	
59	321-280	SECOND GEAR	1	
60	321-283	SPACER	1	
61	629-VVM	BALL BEARING 629VVC2PS2L	1	
62	321-277	SLIP CLUTCH ASS'Y	1	INCLUD.44,50,51,53-61
63	944-525	BEARING WASHER (C)	1	
64	321-276	FIRST GEAR	1	
65	939-299	NEEDLE BEARING (M661)	1	
66	321-319	GEAR COVER	1	
67	313-078	SIDE HANDLE	1	
68	313-079	HANDLE HOLDER	1	
69	313-080	HANDLE BOLT	1	
70	971-786	STOPPER ROD	1	
71		LEVER LABEL	1	
72	321-309	CHANGE LEVER	1	
73	321-308	LEVER HOLDER	1	
74	311-229	RETAINING RING FOR D20 HOLE	1	
75	321-307	LEVER SHAFT	1	
76	873-095	O-RING (P-16)	1	
77	321-310	LEVER SPRING	1	
78	321-311	PUSHING BUTTON	1	
79	321-312	PIN D2X10	1	
80	620-1DD	BALL BEARING 6201DDCMPS2L	1	
81	302-429	DUST WASHER (B)	1	
*	82	360-591U	ARMATURE ASS'Y 110V-120V	1 INCLUD.80,81,86,87
*	82	360-591E	ARMATURE 220V-230V	1
*	82	360-591F	ARMATURE 240V	1
	83	321-320	FAN GUIDE	1
	84	953-174	HEX. HD. TAPPING SCREW D5X55	2
*	85	340-542C	STATOR ASS'Y 110V	1 INCLUD.96
*	85	340-542G	STATOR ASS'Y 120V	1 INCLUD.96
*	85	340-542E	STATOR ASS'Y 220V-230V	1 INCLUD.96
*	85	340-542H	STATOR ASS'Y 220V	1 INCLUD.96 FOR HKG
*	85	340-542F	STATOR ASS'Y 240V	1 INCLUD.96
	86	982-631	WASHER (A)	1
	87	608-VVM	BALL BEARING 608VVC2PS2L	1
	88	318-721	MAGNET	1
	89	321-313	SEAL LOCK HEX. SOCKET HD. BOLT M6X22	2
	90	935-829	BRUSH CAP	2
*	91	999-073	CARBON BRUSH (AUTO STOP TYPE) (1 PAIR)	2
*	91	999-043	CARBON BRUSH (1 PAIR)	2 FOR HKG
	92	971-001	BRUSH HOLDER	2
	93	938-477	HEX. SOCKET SET SCREW M5X8	2
	94	321-321	TAIL COVER	1
	95	877-839	SEAL LOCK HEX. SOCKET HD. BOLT M5X10	2

PARTS

DH 40MR

ITEM NO.	CODE NO.	DESCRIPTION	NO. USED	REMARKS	
96	930-703	BRUSH TERMINAL	2		
97	321-322	VINYL TUBE	1		
98	321-318	HOUSING ASS'Y	1	INCLUD.92,93	
99	321-317	CASE (B)	1		
* 100	321-326	CONTROLLER CIRCUIT 110V	1		
* 100	321-328	CONTROLLER CIRCUIT 120V	1		
* 100	321-327	CONTROLLER CIRCUIT 220V-240V	1		
* 101	317-113	INTERNAL WIRE	1	EXCEPT FOR HKG,USA,CAN	
102	321-323	HANDLE	1		
103	998-485	HEX. SOCKET HD. BOLT (W/FLANGE) M5X14	6		
104	313-093	SWITCH (C) (2P SCREW TYPE W/O LOCK)	1		
105	321-324	HANDLE COVER	1		
106	301-653	TAPPING SCREW (W/FLANGE) D4X20 (BLACK)	2		
107		SDS MAX LABEL	1		
* 108		NAME PLATE	1		
* 109	980-063	TERMINAL	1		
* 109	930-804	TERMINAL M4.0 (10 PCS.)	1	FOR USA,CAN	
* 110	981-373	TUBE (D)	2	FOR CORD	
* 111	958-049	CORD ARMOR D8.2	1		
* 111	940-778	CORD ARMOR D10.7	1		
* 112	959-141	CONNECTOR 50092 (10 PCS.)	1	FOR HKG	
* 113	938-307	PILLAR TERMINAL	1	EXCEPT FOR HKG	
* 114	960-266	CORD CLIP	1		
* 114	981-987Z	CORD CLIP	1	FOR SUI	
115	984-750	TAPPING SCREW (W/FLANGE) D4X16	2		
* 116	500-390Z	CORD	1	(CORD ARMOR D10.7)	
* 116	500-446Z	CORD	1	(CORD ARMOR D10.7) FOR GBR (230V)	
* 116	500-454Z	CORD	1	(CORD ARMOR D10.7) FOR GBR (110V)	
* 116	500-435Z	CORD	1	(CORD ARMOR D8.2) FOR HKG	
* 116	500-391Z	CORD	1	(CORD ARMOR D10.7) FOR SUI	
* 116	500-408Z	CORD	1	(CORD ARMOR D8.2) FOR NZL	
* 116	500-439Z	CORD	1	(CORD ARMOR D8.2) FOR AUS	
* 116	500-434Z	CORD	1	(CORD ARMOR D10.7) FOR USA,CAN	

STANDARD ACCESSORIES

DH 40MR

ITEM NO.	CODE NO.	DESCRIPTION	NO. USED	REMARKS	
501	321-325	CASE	1		
502	981-840	GREASE (A) FOR HAMMER.HAMMER DRILL (30G)	1		
503	943-277	HEX. BAR WRENCH 3MM	1		
504	944-458	HEX. BAR WRENCH 4MM	1		
505	944-459	HEX. BAR WRENCH 5MM	1		

OPTIONAL ACCESSORIES

ITEM NO.	CODE NO.	DESCRIPTION	NO. USED	REMARKS	
601	313-448	DRILL BIT (SDS MAX) D16X340	1		
602	313-456	DRILL BIT (SDS MAX) D16X540	1		
603	313-449	DRILL BIT (SDS MAX) D19X340	1		
604	313-457	DRILL BIT (SDS MAX) D19X540	1		
605	313-450	DRILL BIT (SDS MAX) D22X320	1		
606	313-458	DRILL BIT (SDS MAX) D22X520	1		
607	313-451	DRILL BIT (SDS MAX) D25X320	1		
608	313-459	DRILL BIT (SDS MAX) D25X520	1		
609	313-452	DRILL BIT (SDS MAX) D28X370	1		
610	313-460	DRILL BIT (SDS MAX) D28X570	1		
611	313-453	DRILL BIT (SDS MAX) D32X370	1		
612	313-461	DRILL BIT (SDS MAX) D32X570	1		
613	313-454	DRILL BIT (SDS MAX) D38X370	1		
614	313-462	DRILL BIT (SDS MAX) D38X570	1		
615	313-455	DRILL BIT (SDS MAX) D40X370	1		
616	313-463	DRILL BIT (SDS MAX) D40X570	1		
617	944-460	TAPER SHANK DRILL BIT D11X100	1		
618	944-461	TAPER SHANK DRILL BIT D12.3X110	1		
619	993-038	TAPER SHANK DRILL BIT D12.7X110	1		
620	944-462	TAPER SHANK DRILL BIT D14.3X110	1		
621	944-500	TAPER SHANK DRILL BIT D14.5X110	1		
622	944-463	TAPER SHANK DRILL BIT D17.5X120	1		
623	313-464	TAPER SHANK ADAPTER ASS'Y (SDS MAX) NO.1	1	INCLUD.624	
624	944-477	COTTER	1		
625	313-465	ADAPTER (SDS MAX) FOR SDS PLUS SHANK BIT	1		
626	955-994	CORE BIT 25MM	1		
627	955-995	CORE BIT 29MM	1		
628	955-996	CORE BIT 32MM	1	INCLUD.629	
629	955-997	GUIDE PLATE (FOR CORE BIT 32MM)	1		
630	955-998	CORE BIT 35MM	1	INCLUD.631	
631	955-999	GUIDE PLATE (FOR CORE BIT 35MM)	1		