



DT-171



1.	2
2.	2
3.	2
4.	3
5.	3
6.	4
6.1.	4
6.2.	4
6.3.	4
6.4.	5
6.5.	6
6.6.	« », « ».....	8
6.7.	8
6.8.	8
7.	8
7.1.	8
8.	9
8.1.	9
8.2.	9

1

USB
/ 32000
•
•
•
•
•
•
•
•

2

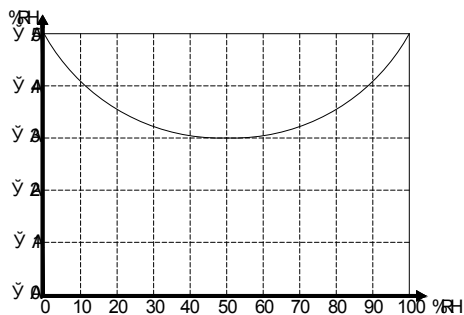
3

DT-171 3.1.

3.1

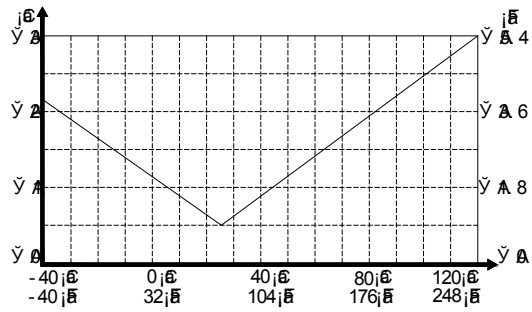
		0 100%
	0 20 80 100%	± 5,0%
	20 40 60 80%	±3,5%
	40 60%	±3,0%
		-40 70° (-40 158°F)
	-40 -10 +40 +70 °	±2°
	- 10 +40°	±1°
	-40 +14 104 158°F	±3,6°F
	+14 +104°F	±1,8°F
		-40 70° (-40 158°F)
	(25° , 40 100% RH)	±2,0° (±4,0°F)
		: 2 24
		-35 80° (-31 176°F)
	3,6 , (1/2) (SAFTLS14250), TADIRAN TL-5101	
		101 25 23 , 172 .

3.1.



.3.1

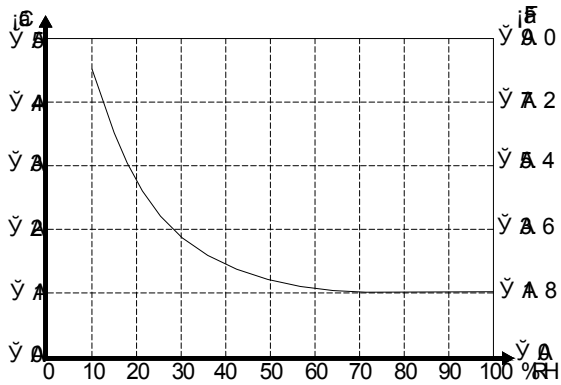
3.2.



.3.2

(25°)

3.3.



.3.3

4

4.1.

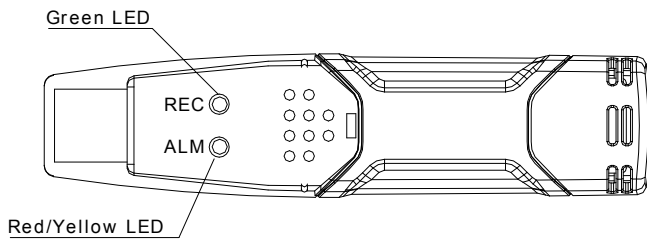
4.1

	1	
	2	
	1	
	1	
	1	3,6 (1/2) (SAFT LS 14250, Tadiran TL-5101)

5

DT-171

5.1 (. .5.1).



5.1

		/
1	GREEN LED	,
2	RED/YELLOW LED	/ , , ,
3	REC	.
4	ALM	
5		

6.

6
6.1

CD-ROM.
SETUP.EXE,

USB

USB

(.6.1.1):



.6.1.1

CD-ROM)
USB

6.2

DALOGGER,

USB

6.3

DT-171

6.3.1,

6.3.1.



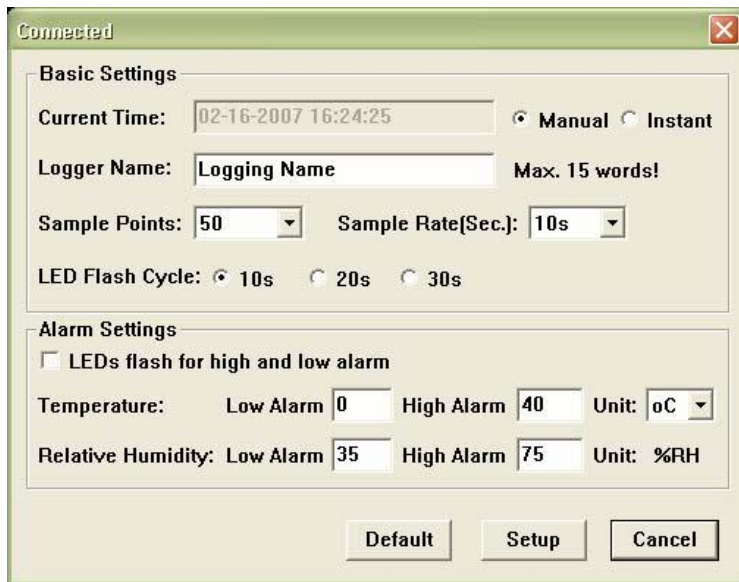
.6.3.1

6.3.1	
DATA DOWNLOAD	
LOGGER SETUP	
FILE OPEN	
FILE SAVE-AS	
FILE PRINT	
VIEW ALL	
ZOOM	
FILE	
VIEW	
LINK	
HELP	
FILE ()	
OPEN	
SAVE AS	

PRINT	
PRINTING PREVIEW	
PRINT SETUP	
EXIT	
VIEW ()	
TOOL BAR	
STATUS BAR	
ZOOM OUT	
ZOOM IN	
VIEW ALL	
SHOW TRACES	
RELATIVE HUMIDITY	
LOW ALARM FOR RH	
HIGH ALARM FOR RH	
TEMPERATURE	
LOW ALARM FOR TEMPERATURE	
HIGH ALARM FOR TEMPERATURE	
DEIW POINT	
BACKGROUND	
FULL BLACK	
FULL WHITE	
BLACK AND RED	
BLACK AND BLUE	
GRID LINES	
X AXIS	
Y AXIS	Y
MASK POINTS	
LINK	
LOGGER SET	
DATA DOWNLOAD	
HELP	
HELP TOPICS	
ABOUT DATALOGGER	

6.4

LINK – LOGGER SET.
6.4.1 6.4.1.



.6.4.1

6.4.1

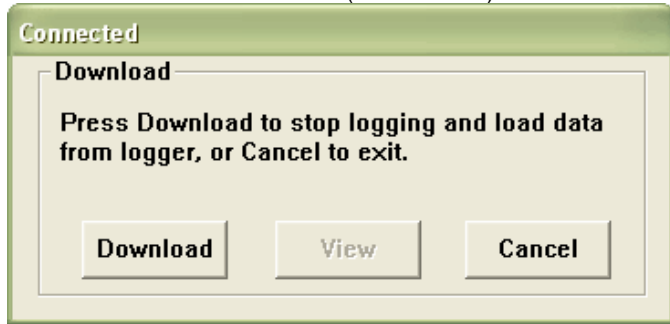
CONNECTED	
MANUAL	
INSTANT	
BASIC SETTINGS	
CURRENT TIME	
LOGGER NAME	
SAMPLE POINTS	
SAMPLE RATE (SEC.)	()
LED FLESH CYCLE	

ALARM SETTINGS	
LEDS FLASH FOR HIGH AND LOW ALARM	
TEMPERATURE	
LOW ALARM	
HIGH ALARM	
RELATIVE HUMIDITY	
UNIT	
DEFAULT	
SETUP	
CANCEL	

- « » -
 - « » « »:
 - «Instant».
 - «Manual».
 - « » -
 - « »
 - « » -
 - « » (
 - « »).
 - « »,
 - «SETUP», « CANCEL», « DEFAULT»,
 - « CANCEL»,
 - « CANCEL»,
 - « INSTANT»,
 - «SETUP», «MANUAL»,
- 3 , 2

6.5

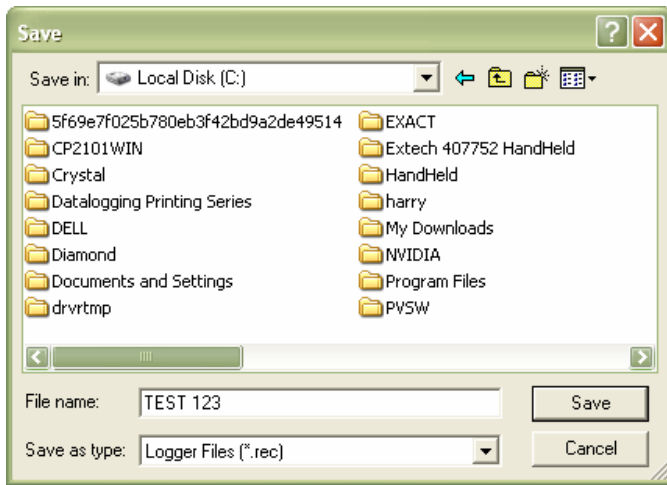
- USB
- (.6.5.1).
- «DOWNLOAD»,



.6.5.1

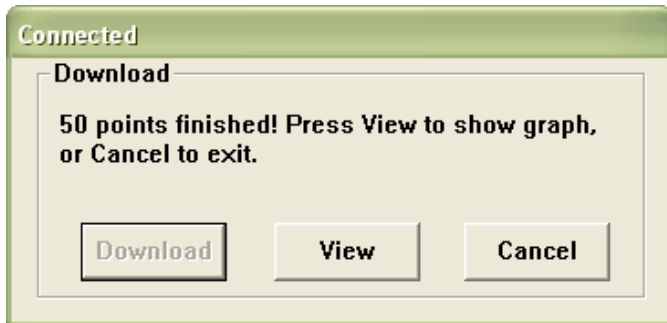
EXCEL, TEXT Bitmap.

« – save as»



.6.5.2

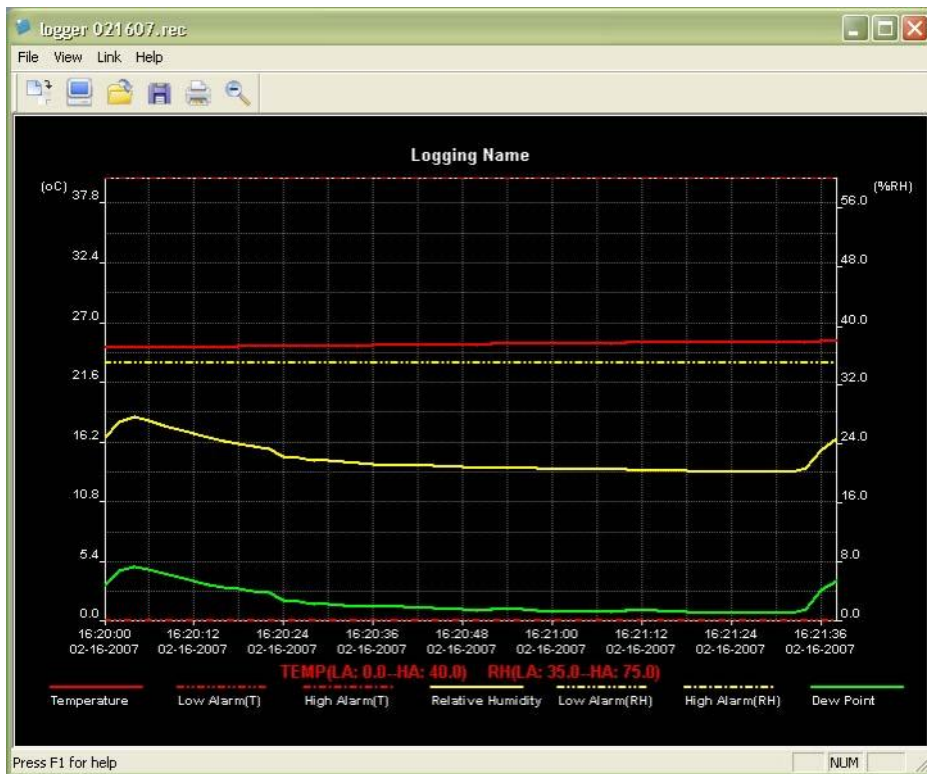
« VIEW »,



.6.5.3

«VIEW»,

Y.



.6.5.4

- -
 -
- « VIEW ALL »,
: «VIEW - «ZOOM OUT».

BACKGROUND, GRID LINES, and MASK POINTS».

- «SHOW TRACES» -
- ().
- «BACKGROUND» -
- «GRID LINES» -
- «MASK POINTS»-

«VIEW»

«SHOW TRACES,

6.6

() « - file» - « - save as».

TEXT FILE (.txt) EXCEL FILE (.xls) BITMAP FILE (.bmp).

: «FILE - » «FILE OPEN - »,.

6.7

: « FILE- » «PRINT - ».

6.8

6.8.1.

6.8.1

REC ALM	:	
REC ALM	10 : 10	
REC ALM	10 : :	
REC ALM	10 : 10 :	

7
7.1

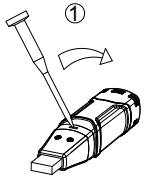
12

3,5

USB

DT-171

. 7.1.1.



②

.7.1.1

8
8.1

: « », « »
(
- 12

8.2

8.2.1.

8.2.1