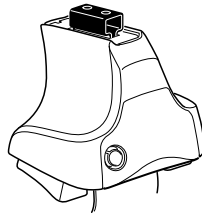


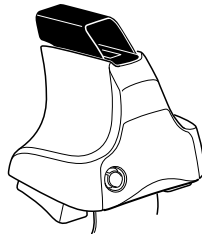
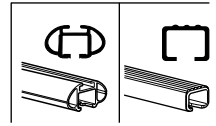
Kit 1618

VOLKSWAGEN Jetta VI, 4-dr Sedan, 10-/*11-

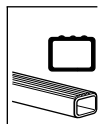
*North America



754 Rapid System
480R Rapid Traverse (North America)



480 Traverse (North America)



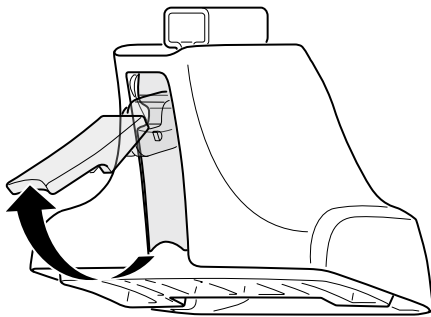
754 Rapid System
 480R Rapid Traverse (North America)

754 Rapid System
 480R Rapid Traverse (North America)

(North America)

50993 x 2
 1135 x 1
 1137 x 1
 1149 x 2
 204 x 1
 206 x 1
 340 x 1
 341 x 1
 x 1

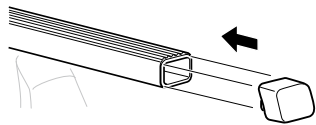
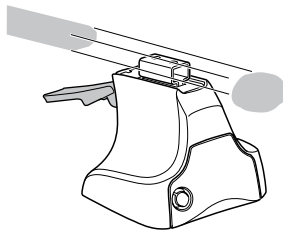
1



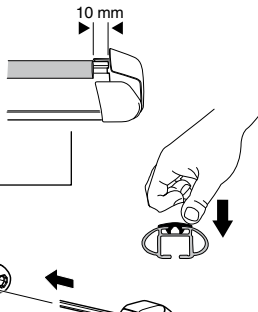
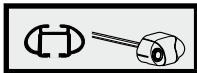
2



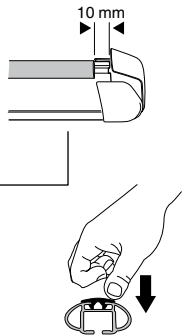
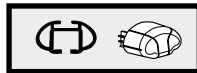
754 Rapid System
480R Rapid Traverse
(North America)



x4



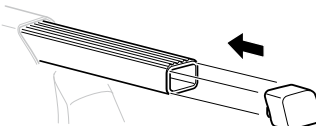
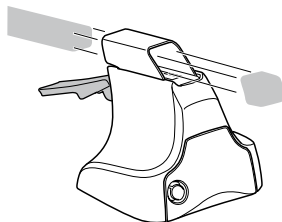
x4



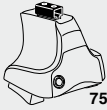
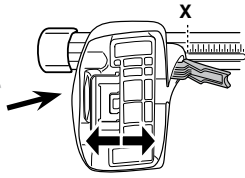
x4



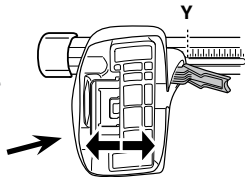
480 Traverse
(North America)



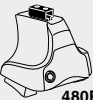
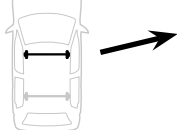
x4

3**754** Rapid System

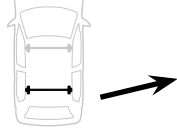
VOLKSWAGEN Jetta VI, 4-dr Sedan, 10-/*11-

X**36**

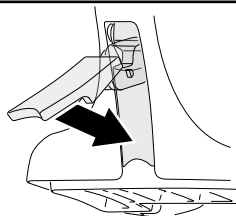
VOLKSWAGEN Jetta VI, 4-dr Sedan, 10-/*11-

Y**33,5****3****480R** Rapid Traverse**480** Traverse**(North America)**

VOLKSWAGEN Jetta VI, 4-dr Sedan, 10-/*11-

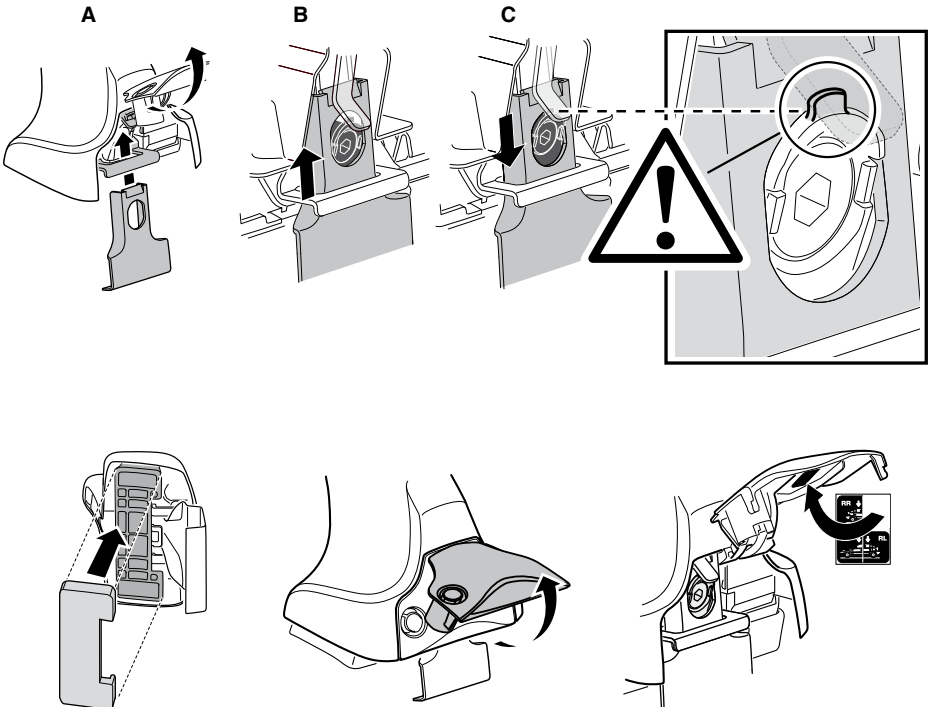
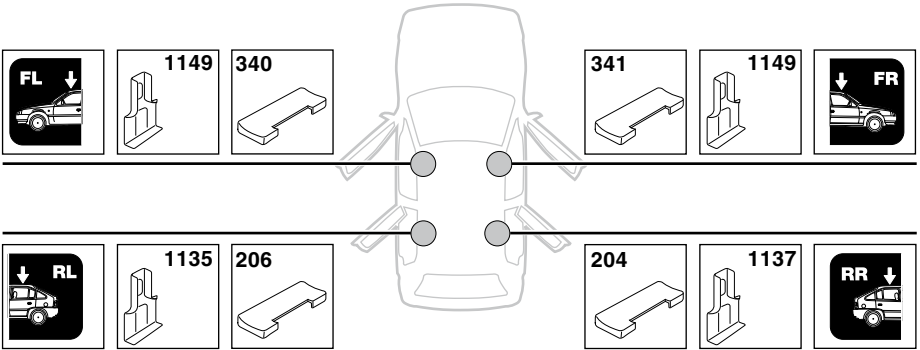
X inch**X mm****39 3/4"****1011 mm**

VOLKSWAGEN Jetta VI, 4-dr Sedan, 10-/*11-

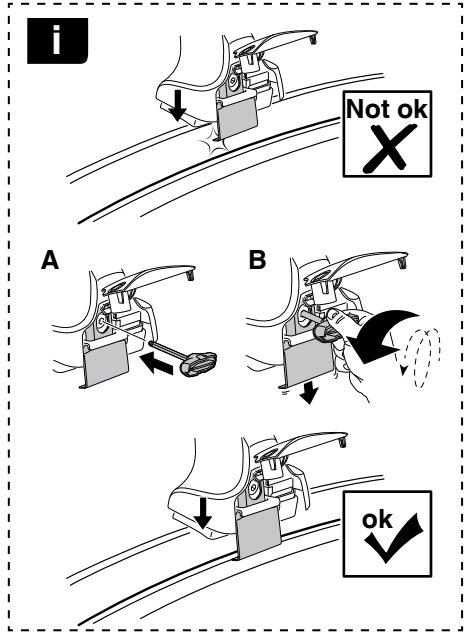
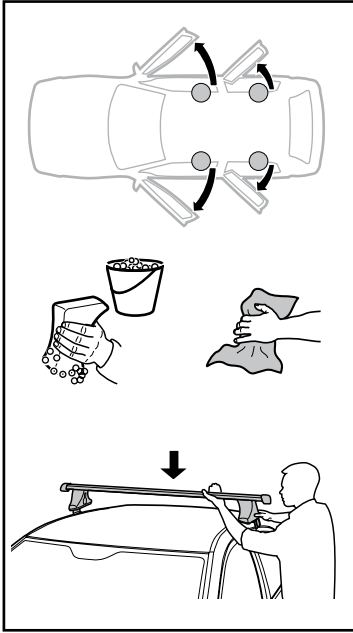
Y inch**Y mm****38 3/4"****986 mm****4**

5

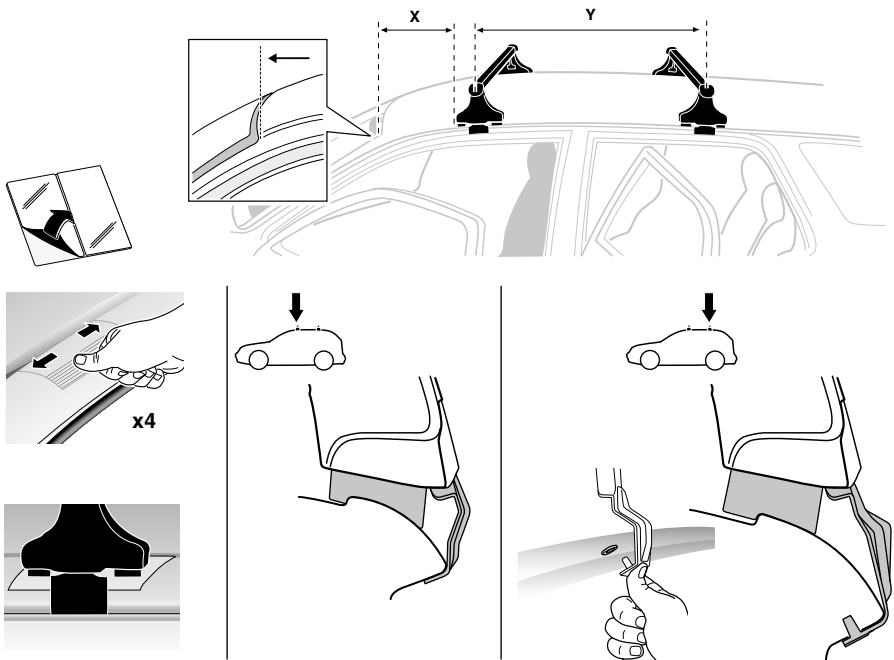
VOLKSWAGEN Jetta VI, 4-dr Sedan, 10-/*11-



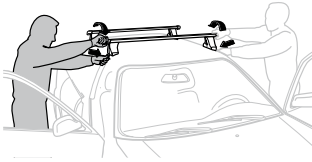
6



	X mm	Y mm	X inch	Y inch
VOLKSWAGEN Jetta VI, 4-dr Sedan, 10- / *11-	254 mm	762 mm	10"	30"



7



GB/US	Tighten alternately
D	Die Schrauben abwechselnd anziehen
F	Serrer alternativement chaque côté
NL	Afwisselend aan de linker- en de rechterkant aandraaien
I	Alternare il serraggio delle viti
E	Apertar alternativamente
PT	Aperte alternadamente
S	Dra åt växelvis
FIN	Kierrä vuorotellen
EST	Pinguldage vaheldumisi
LAT	Pielveiciet pamišus
LIT	Užsukinėkite pakaitomis
PL	Śruby dokręcaj naprzemiennie
RU	Загряивайте попеременно

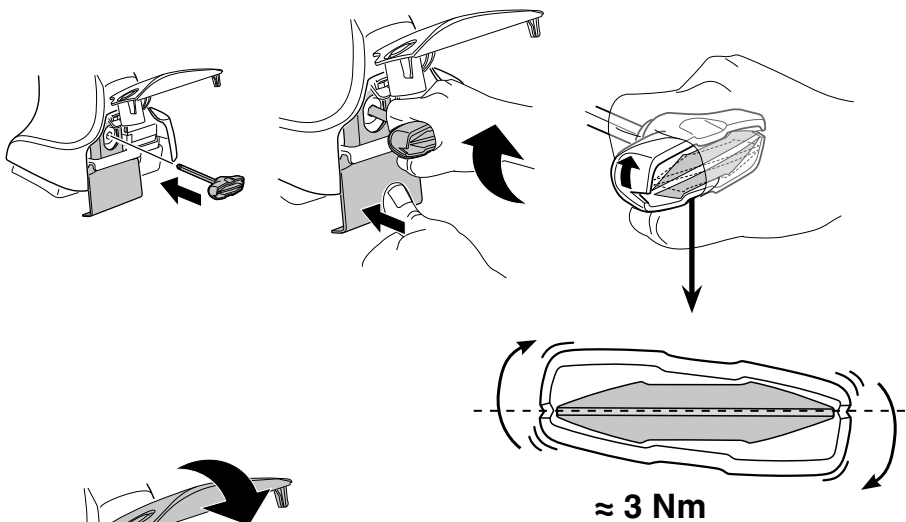
CZ	Pokręřta багаžnika dokręcaj naprzemiennie.
SK	Dofahajte striedavo
SLO	Privijajte izmenično.
HR	Naizmjenično zategnite
HU	Egymástól függetlenül szorítandó
GR	Σφιγίγτες εναλλάξ
TR	Dönüşümlü sıkın

中文 交替拧紧

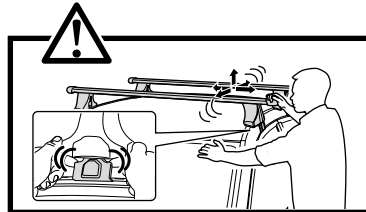
한국어 번갈아 가며 조이십시오.

日本語 交互に締め付けてください。

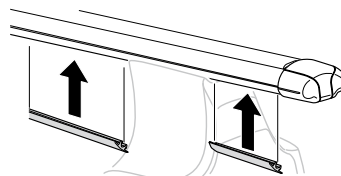
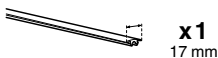
ไทย ชันในแบบสลับ

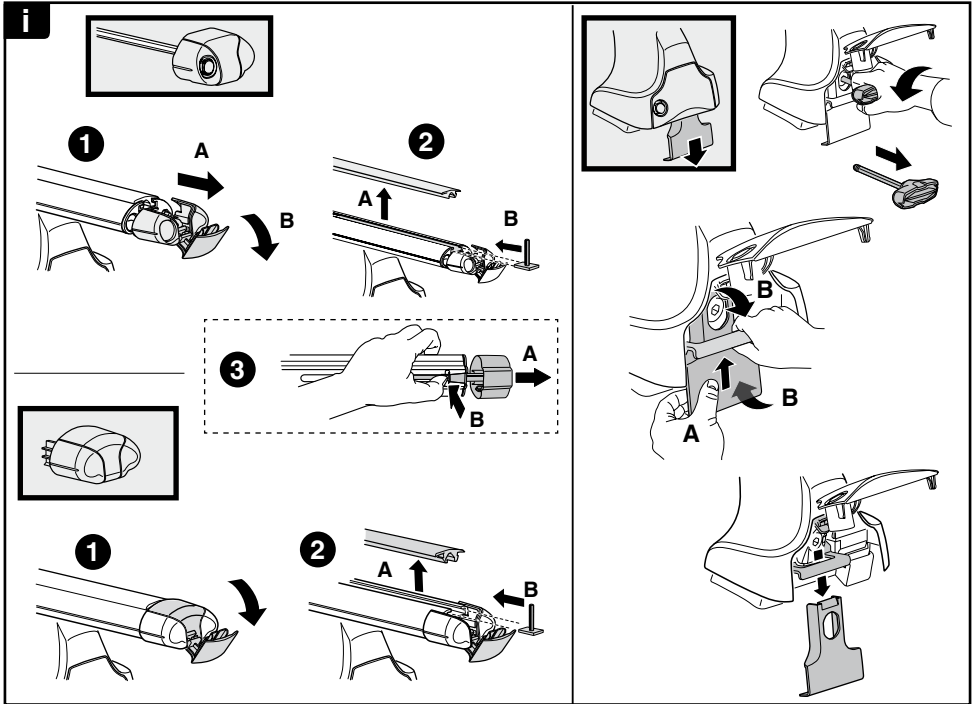
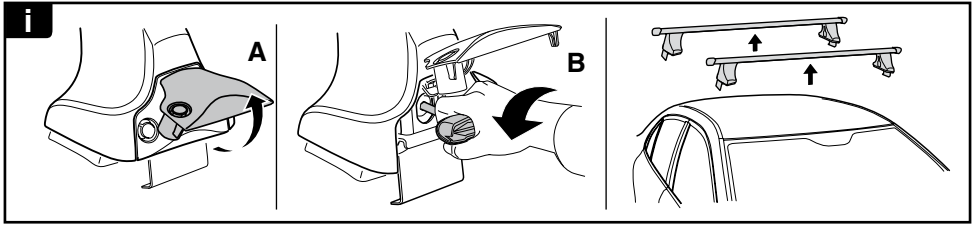


≈ 3 Nm

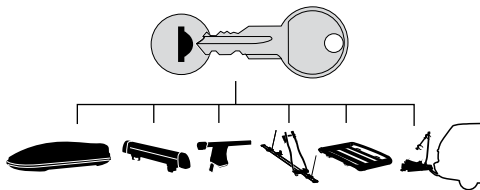


8





THULE
SWEDEN
**ONE
KEY
SYSTEM**



544 (x4)

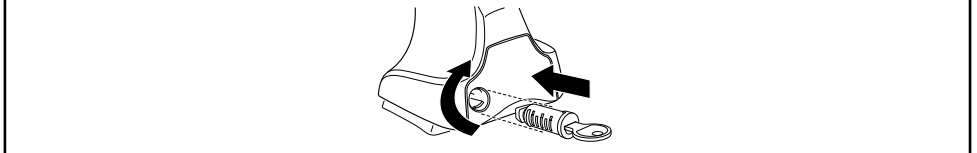
596 (x6)

588 (x8)

NA **510** (x10)

EUR **452** (x12)

ASIA



WW ▶ Thule Sweden AB, Box 69, 330 33 Hillerstorp, SWEDEN

NA ▶ Thule Inc., 42 Silvermine Road, Seymour, Connecticut 06483, USA

info@thule.com

customer.service@thule.com



www.thule.com