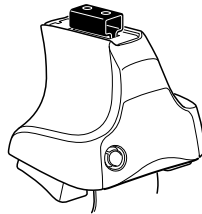


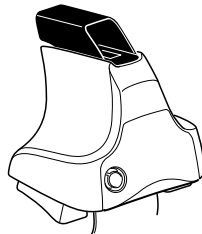
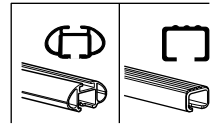
# Kit 1529

**FORD Fusion**, 4-dr Sedan, \*06–  
**LINCOLN MKZ**, 4-dr Sedan, \*07–  
**MERCURY Milan**, 4-dr Sedan, \*06-09

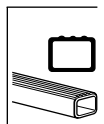
\*North America



**754** Rapid System  
**480R** Rapid Traverse (North America)



**480** Traverse (North America)



754 Rapid System  
 480R Rapid Traverse (North America)

---

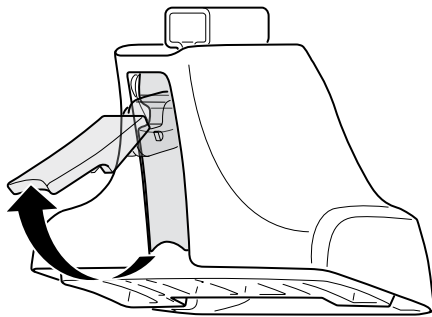
480 Traverse (North America)

(North America)

733 x 2  
 670 x 2  
 266 x 1  
 267 x 1  
 182 x 2

x 1

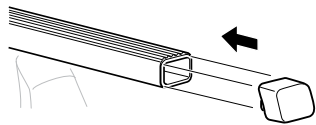
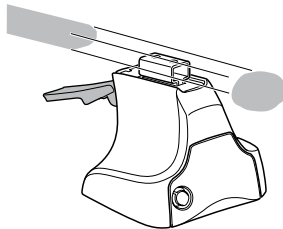
1



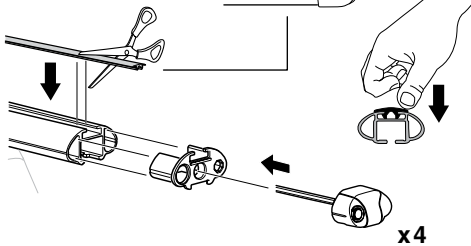
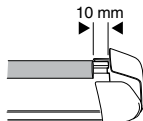
2



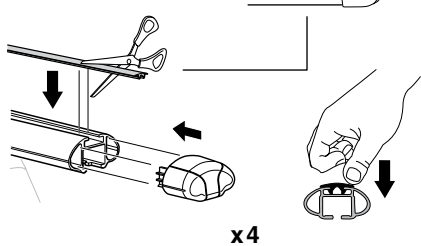
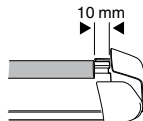
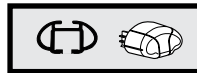
754 Rapid System  
480R Rapid Traverse  
(North America)



x4



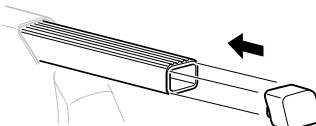
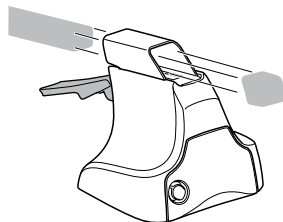
x4



x4



480 Traverse  
(North America)



x4

**3**



**754** Rapid System

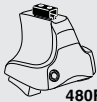


	<b>X</b>
<b>FORD Fusion, 4-dr Sedan, *06-</b>	<b>38</b>
<b>LINCOLN MKZ, 4-dr Sedan, *07-</b>	<b>38</b>
<b>MERCURY Milan, 4-dr Sedan, *06-09</b>	<b>38</b>



	<b>Y</b>
<b>FORD Fusion, 4-dr Sedan, *06-</b>	<b>40,5</b>
<b>LINCOLN MKZ, 4-dr Sedan, *07-</b>	<b>40,5</b>
<b>MERCURY Milan, 4-dr Sedan, *06-09</b>	<b>40,5</b>

**3**

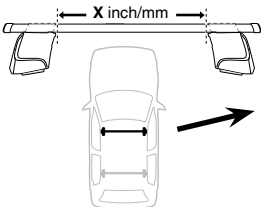


**480R** Rapid Traverse

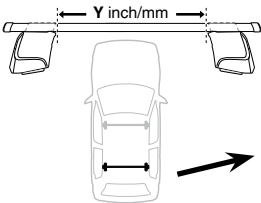


**480** Traverse

**(North America)**

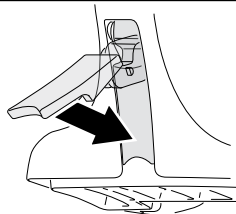


	<b>X inch</b>	<b>X mm</b>
<b>FORD Fusion, 4-dr Sedan, *06-</b>	<b>40 1/2"</b>	<b>1030 mm</b>
<b>LINCOLN MKZ, 4-dr Sedan, *07-</b>	<b>40 1/2"</b>	<b>1030 mm</b>
<b>MERCURY Milan, 4-dr Sedan, *06-09</b>	<b>40 1/2"</b>	<b>1030 mm</b>



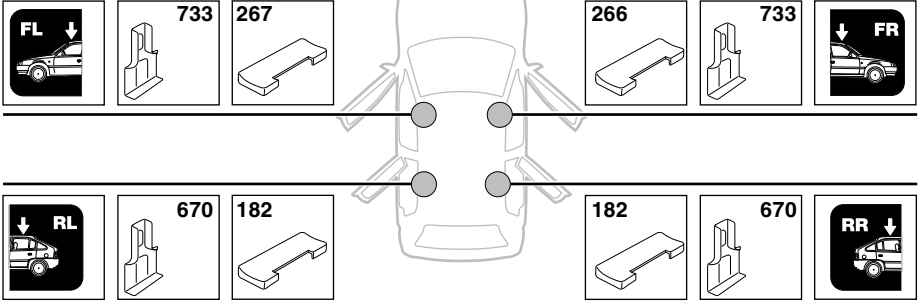
	<b>Y inch</b>	<b>Y mm</b>
<b>FORD Fusion, 4-dr Sedan, *06-</b>	<b>41 1/2"</b>	<b>1056 mm</b>
<b>LINCOLN MKZ, 4-dr Sedan, *07-</b>	<b>41 1/2"</b>	<b>1056 mm</b>
<b>MERCURY Milan, 4-dr Sedan, *06-09</b>	<b>41 1/2"</b>	<b>1056 mm</b>

**4**

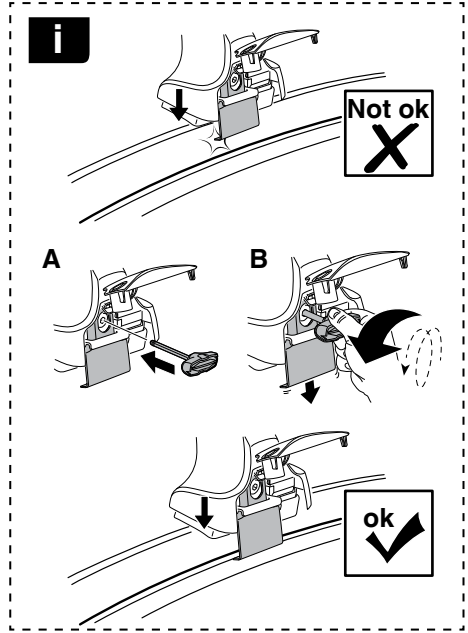


**5**

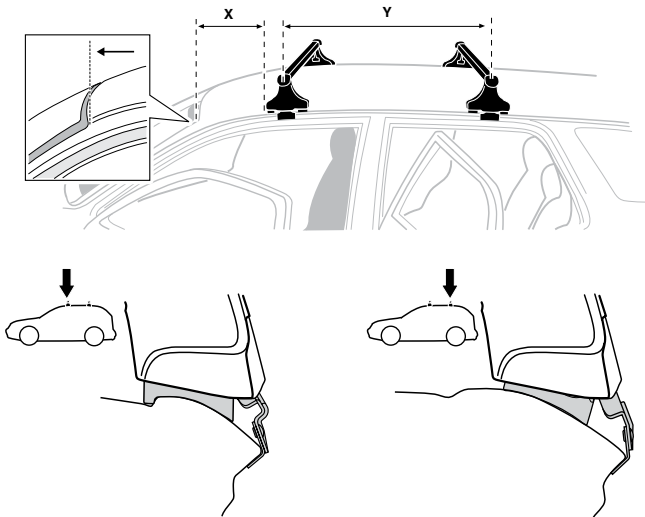
**FORD Fusion, 4-dr Sedan, \*06-**  
**LINCOLN MKZ, 4-dr Sedan, \*07-**  
**MERCURY Milan, 4-dr Sedan, \*06-09**



6



	X mm	Y mm	X inch	Y inch
<b>FORD Fusion, 4-dr Sedan, *06-</b>	205 mm	680 mm	8"	26 <sup>3</sup> / <sub>4</sub> "
<b>LINCOLN MKZ, 4-dr Sedan, *07-</b>	205 mm	680 mm	8"	26 <sup>3</sup> / <sub>4</sub> "
<b>MERCURY Milan, 4-dr Sedan, *06-09</b>	205 mm	680 mm	8"	26 <sup>3</sup> / <sub>4</sub> "



7



<b>GB/US</b>	Tighten alternately
<b>D</b>	Die Schrauben abwechselnd anziehen
<b>F</b>	Serrer alternativement chaque côté
<b>NL</b>	Afwisselend aan de linker- en de rechterkant aandraaien
<b>I</b>	Alternare il serraggio delle viti
<b>E</b>	Apertar alternativamente
<b>PT</b>	Aperte alternadamente
<b>S</b>	Dra åt växelvis
<b>FIN</b>	Kierrä vuorotellen
<b>EST</b>	Pinguldage vaheldumisi
<b>LAT</b>	Pielveiciet pamišus
<b>LIT</b>	Užsukinėkite pakaitomis
<b>PL</b>	Śruby dokręcaj naprzemiennie
<b>RU</b>	Загряивайте попеременно

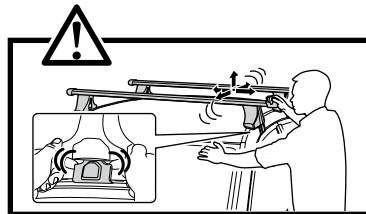
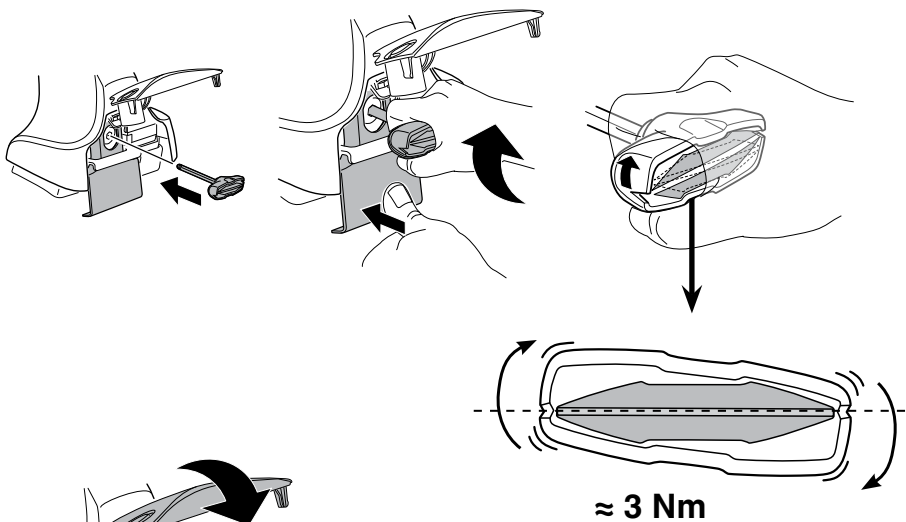
<b>CZ</b>	Pokręřta багаžnika dokręcaj naprzemiennie.
<b>SK</b>	Dofahajte striedavo
<b>SLO</b>	Privijajte izmenično.
<b>HR</b>	Naizmjenično zategnite
<b>HU</b>	Egymástól függetlenül szorítandó
<b>GR</b>	Σφιγίγτες εναλλάξ
<b>TR</b>	Dönüşümlü sıkın

**中文** 交替拧紧

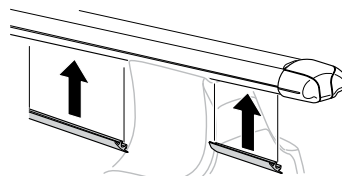
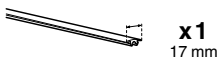
**한국어** 번갈아 가며 조이십시오.

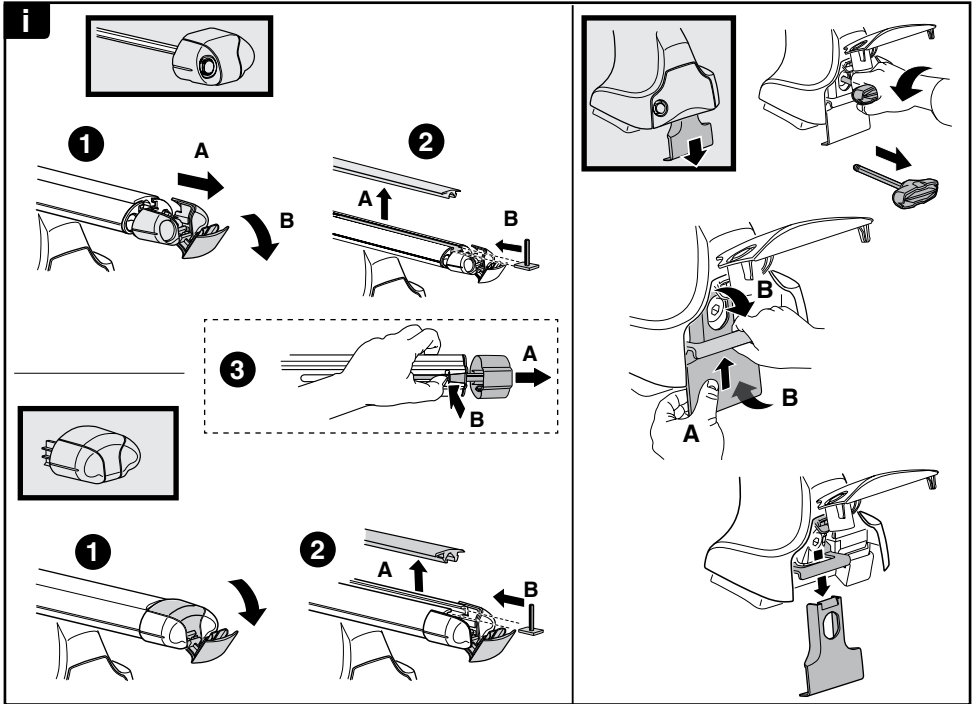
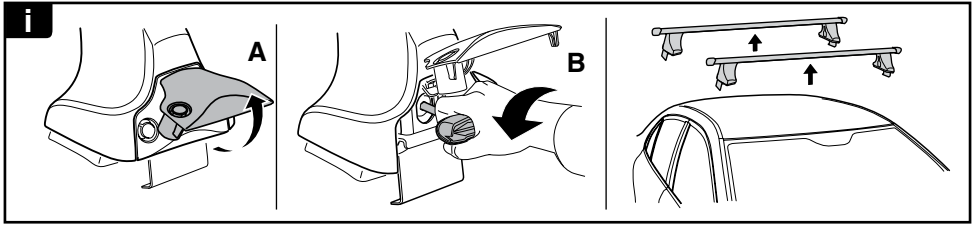
**日本語** 交互に締め付けてください。

**ไทย** ชันในแบบสลับ

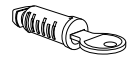
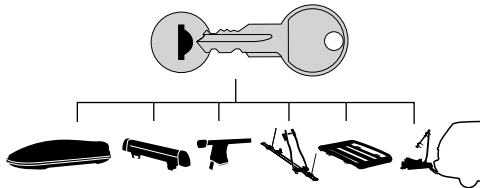


8





**THULE**  
SWEDEN  
**ONE  
KEY  
SYSTEM**



- 544** (x4)
- 596** (x6)
- 588** (x8)
- NA **510** (x10)
- EUR **452** (x12)
- ASIA

