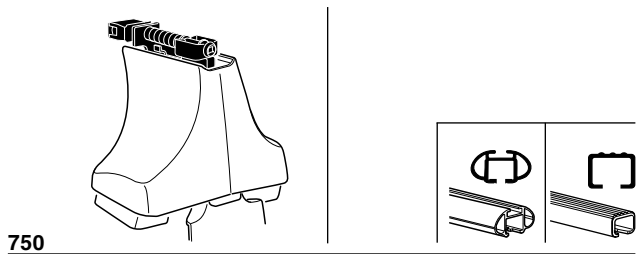
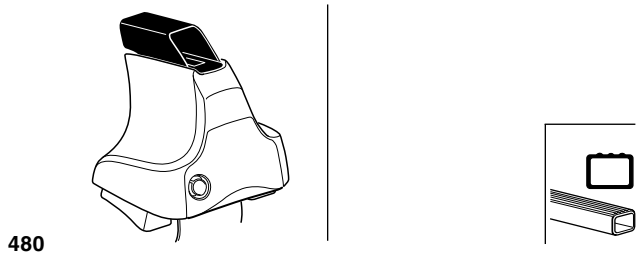
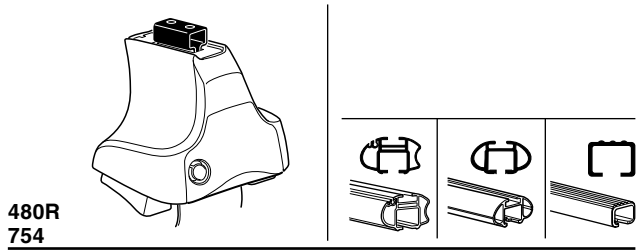


Kit 1527

JAGUAR XF, 4-dr Sedan, 08- / *09-

*North America



Max.
50 kg
Max.
110 lbs

Kit XXXX
 instructions

480R/754

480

750

------------------	------	------------------	----------	--

810 x1

811 x1

812 x2

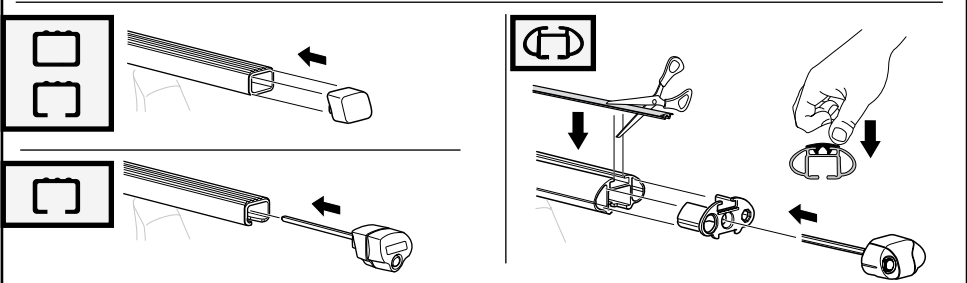
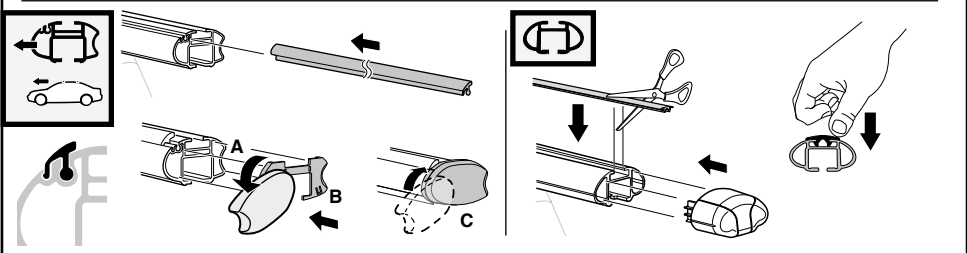
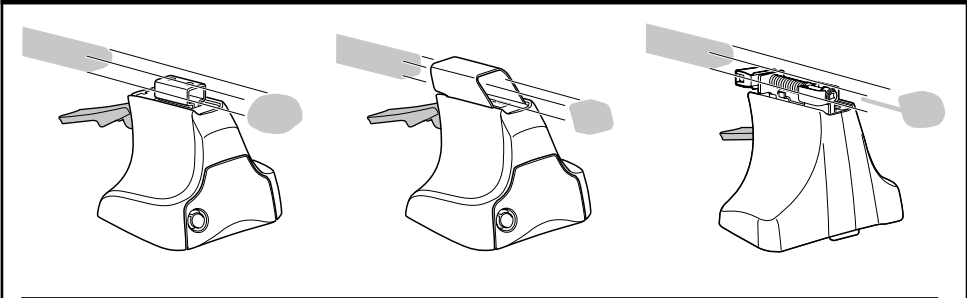
06 x2

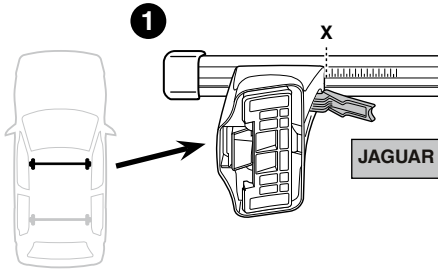
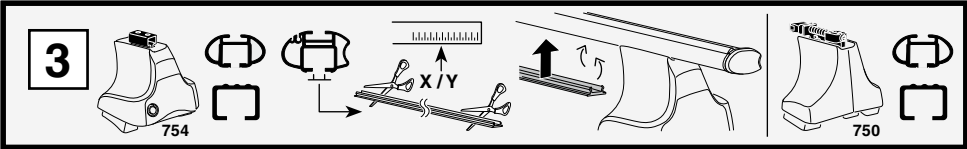
251 x1

252 x1

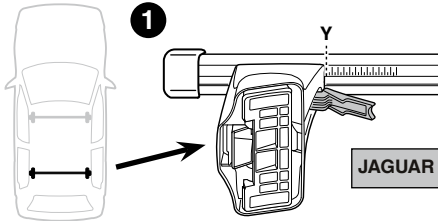
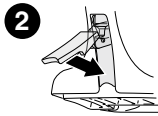
x1

Kit

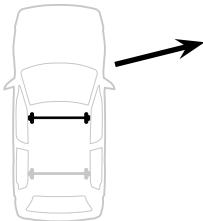
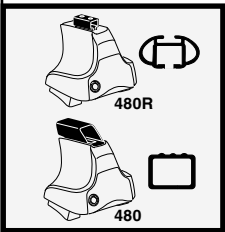




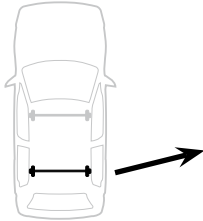
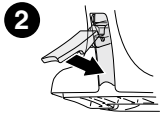
	X
JAGUAR XF, 4-dr Sedan, 08- / *09-	39,5



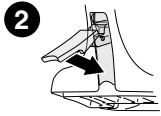
	Y
JAGUAR XF, 4-dr Sedan, 08- / *09-	40



	X inch	X mm
JAGUAR XF, 4-dr Sedan, 08- / *09-	41 1/8"	1046 mm

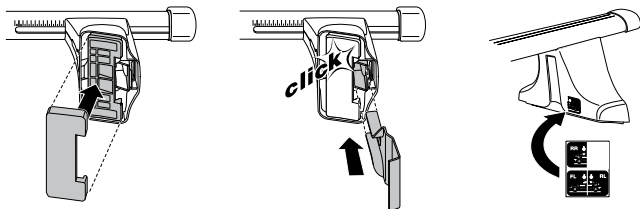
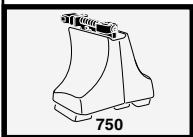
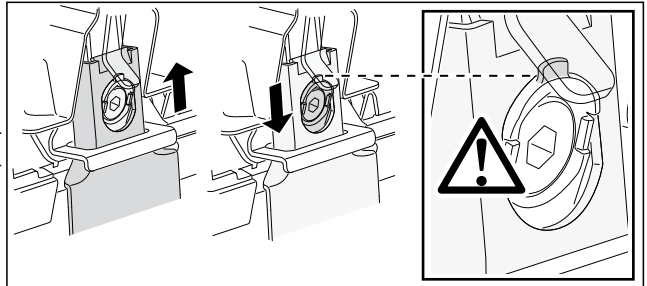
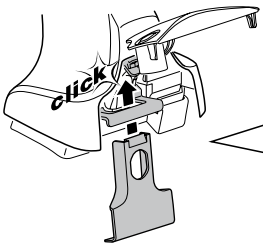
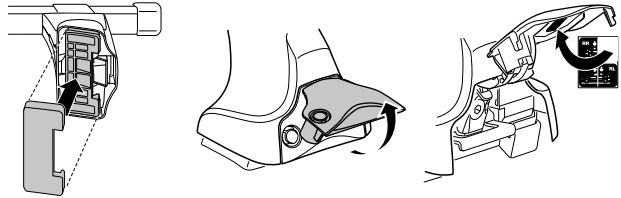
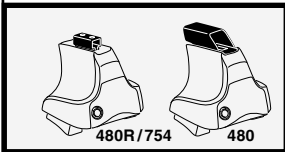
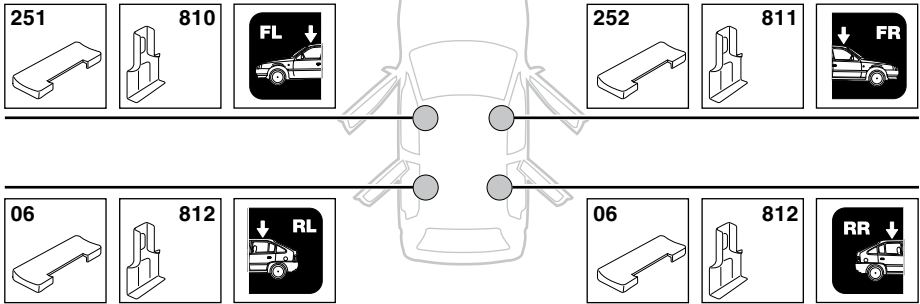


	Y inch	Y mm
JAGUAR XF, 4-dr Sedan, 08- / *09-	41 3/8"	1051 mm

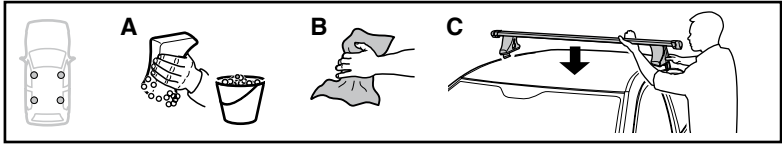


4

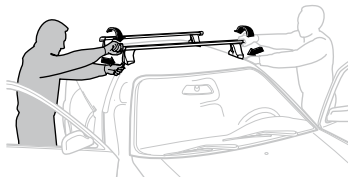
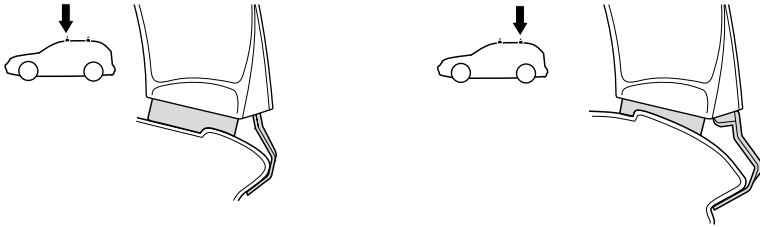
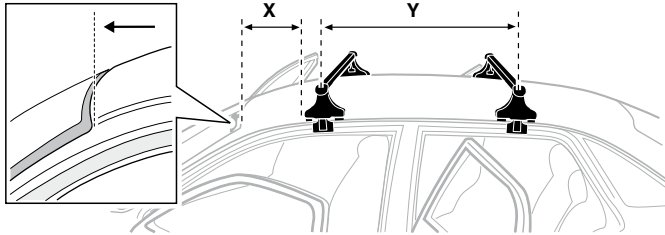
JAGUAR XF, 4-dr Sedan, 08- / *09-



5



	X mm	Y mm	X inch	Y inch
JAGUAR XF, 4-dr Sedan, 08- / *09-	200 mm	650 mm	7 ⁷ / ₈ "	25 ⁵ / ₈ "



GB/US Tighten alternately

D Die Schrauben abwechselnd anziehen

F Serrer alternativement chaque côté

NL Afwisselend aan de linker- en de rechterkant aandraaien

I Alternare il serraggio delle viti

E Apertar alternativamente

PT Aperte alternadamente

S Dra åt växelvis

FIN Kierrä vuorotellen

EST Pinguldage vaheldumisi

LAT Pielieciet pamišus

LIT Užsukinėkite pakaitomis

PL Śruby dokręcaj naprzemiennie

RU Затягивайте попеременно

CZ Pokręťta bagażníka dokręcaj dokręcaj naprzemiennie.

SK Doťahujte striedavo

SLO Privijajte izmenično.

HR Naizmjenično zategnite

HU Egymástól függetlenül szorítandó

GR Σφιγγετε εναλλάξ

TR Dönüşümlü sıkın

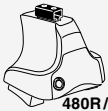
中文 交替拧紧

한국어 번갈아 가며 조이십시오.

日本語 交互に締め付けてください。

ไทย ชันโนแบบสลับ

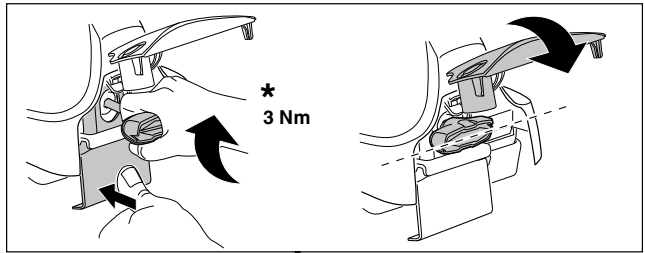
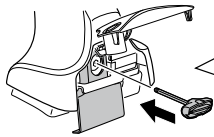
6



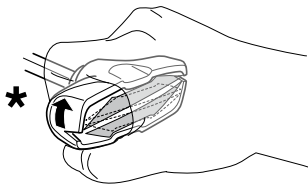
480R/754



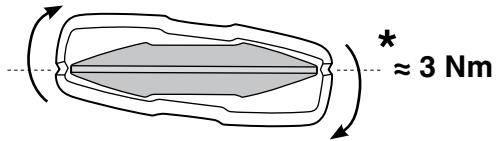
480



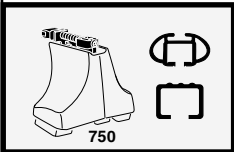
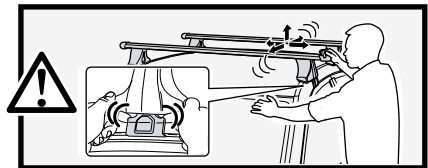
*
3 Nm



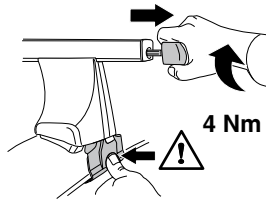
*



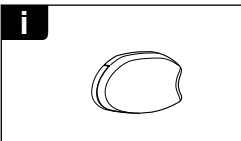
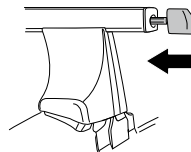
*
≈ 3 Nm



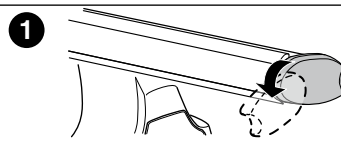
750



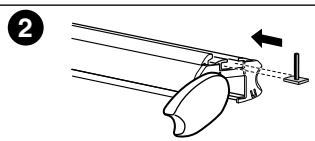
4 Nm



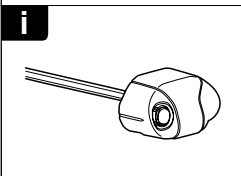
i



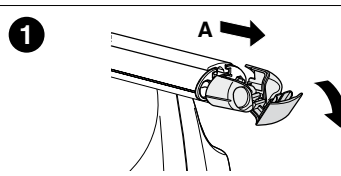
1



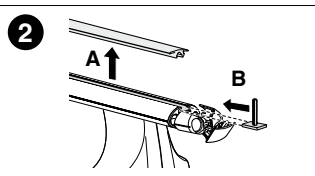
2



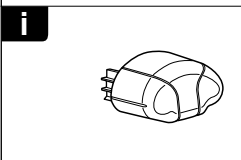
i



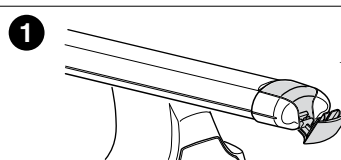
1



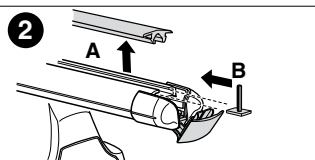
2



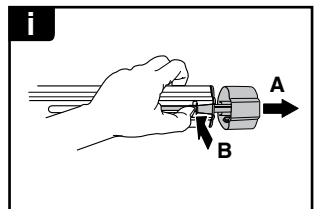
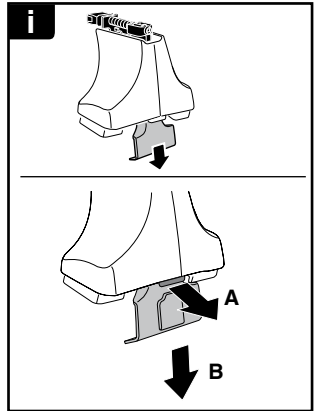
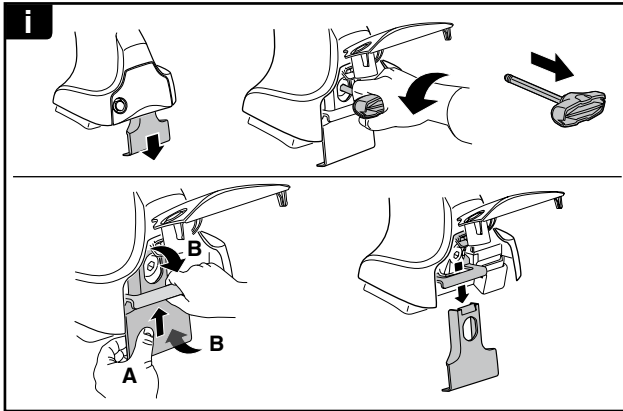
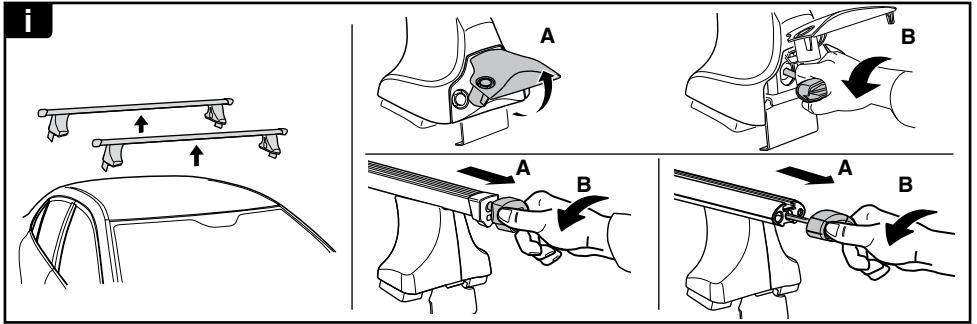
i



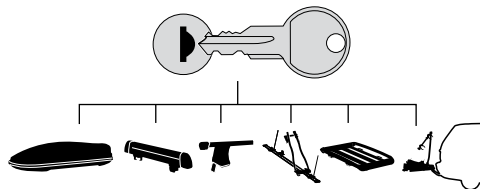
1



2



THULE
SWEDEN
**ONE
KEY
SYSTEM**



- 544 (x4)
- 596 (x6)
- 588 (x8)
- NA 510 (x10)
- EUR 452 (x12)
- ASIA 452 (x12)

