

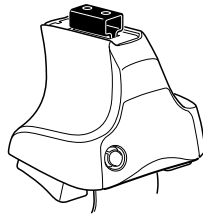
# Kit 1510

**HONDA Pilot**, 5-dr SUV, \*06-08, 09–

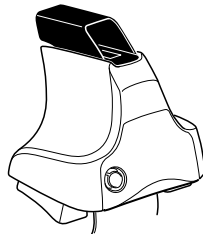
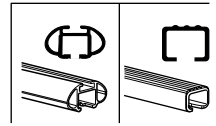
**HONDA Ridgeline**, 4-dr Quad Cab, \*06-08, 09–

\*North America

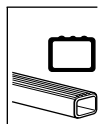
w/o factory rack



**754** Rapid System  
**480R** Rapid Traverse (North America)



**480** Traverse (North America)



**x1**

**754 Rapid System**

**x4**

**480R Rapid Traverse (North America)**

**x4**

**x4**

---

**754 Rapid System**

**480R Rapid Traverse (North America)**

---

**x1**

**480 Traverse (North America)**

**x4**

**x4**

<b>x2</b>	<b>x2</b> 23 mm	<b>x1</b> 17 mm	<p>(North America)</p> <b>x2</b> 23 mm	<b>x2</b>
<b>x2</b>	<b>x2</b>	<b>x2</b> 23 mm	<b>x2</b>	<b>x2</b>
<b>x4</b>	<b>x4</b>	<b>x2</b>	<b>x2</b>	<b>x2</b>
<b>x4</b>	<b>x4</b>	<b>x2</b>	<b>x2</b>	<b>x2</b>

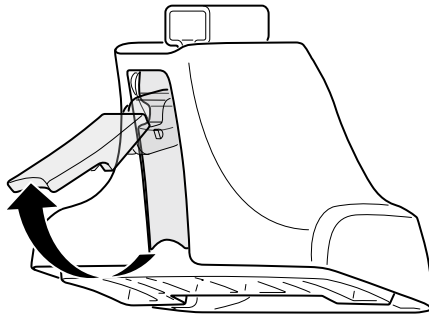
**578** **x4**

**182** **x4**

**x1**

RIR ↓ PR  
 FL ↓ RL

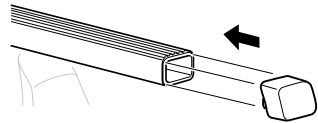
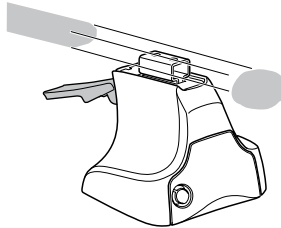
1



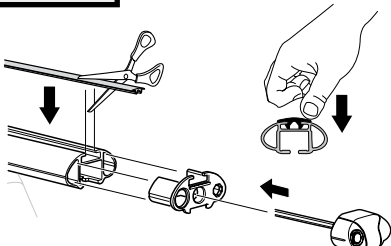
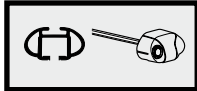
2



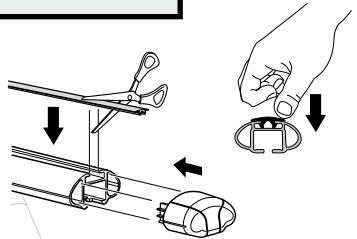
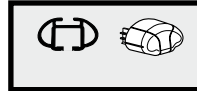
754 Rapid System  
480R Rapid Traverse  
(North America)



x4



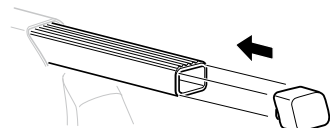
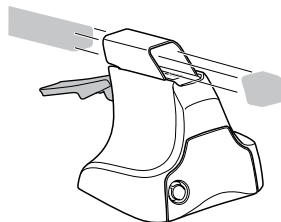
x4



x4

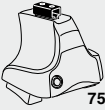


480 Traverse  
(North America)

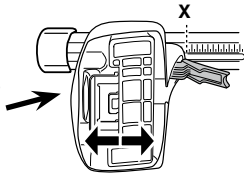


x4

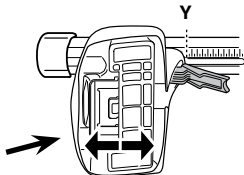
**3**



**754** Rapid System



	X
<b>HONDA Pilot, 5-dr SUV, *06-08</b>	<b>56</b>
<b>HONDA Pilot, 5-dr SUV, *09–</b>	<b>58,5</b>
<b>HONDA Ridgeline, 4-dr Quad Cab, *06-08</b>	<b>56</b>
<b>HONDA Ridgeline, 4-dr Quad Cab, *09–</b>	<b>58,5</b>



	Y
<b>HONDA Pilot, 5-dr SUV, *06-08</b>	<b>53,5</b>
<b>HONDA Pilot, 5-dr SUV, *09–</b>	<b>59,5</b>
<b>HONDA Ridgeline, 4-dr Quad Cab, *06-08</b>	<b>53,5</b>
<b>HONDA Ridgeline, 4-dr Quad Cab, *09–</b>	<b>59,5</b>

**3**



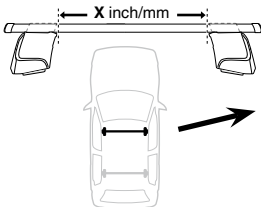
**480R** Rapid Traverse



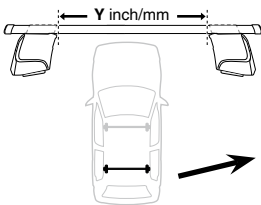
**480** Traverse



**(North America)**

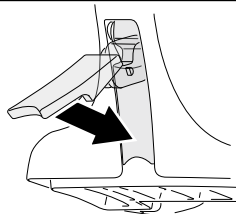


	X inch	X mm
<b>HONDA Pilot, 5-dr SUV, *06-08</b>	<b>47 1/2"</b>	<b>1211 mm</b>
<b>HONDA Pilot, 5-dr SUV, *09–</b>	<b>48 3/4"</b>	<b>1237 mm</b>
<b>HONDA Ridgeline, 4-dr Quad Cab, *06-08</b>	<b>47 1/2"</b>	<b>1211 mm</b>
<b>HONDA Ridgeline, 4-dr Quad Cab, *09–</b>	<b>48 3/4"</b>	<b>1237 mm</b>



	Y inch	Y mm
<b>HONDA Pilot, 5-dr SUV, *06-08</b>	<b>46 3/4"</b>	<b>1186 mm</b>
<b>HONDA Pilot, 5-dr SUV, *09–</b>	<b>49 1/8"</b>	<b>1247 mm</b>
<b>HONDA Ridgeline, 4-dr Quad Cab, *06-08</b>	<b>46 3/4"</b>	<b>1186 mm</b>
<b>HONDA Ridgeline, 4-dr Quad Cab, *09–</b>	<b>49 1/8"</b>	<b>1247 mm</b>

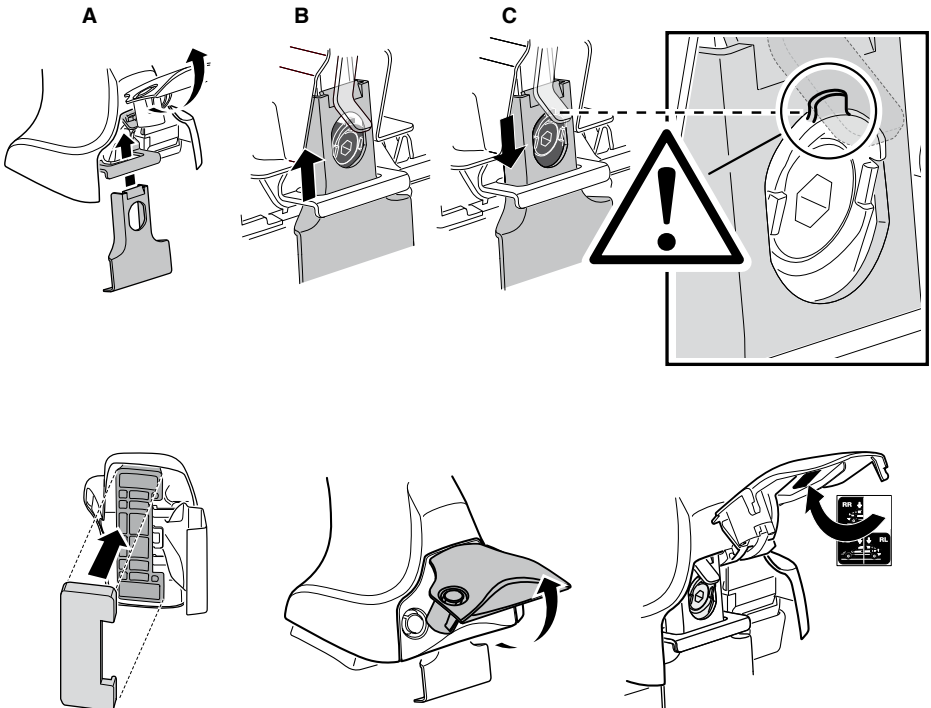
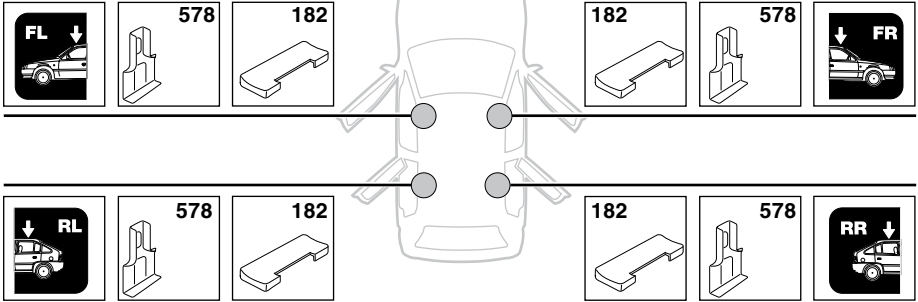
**4**



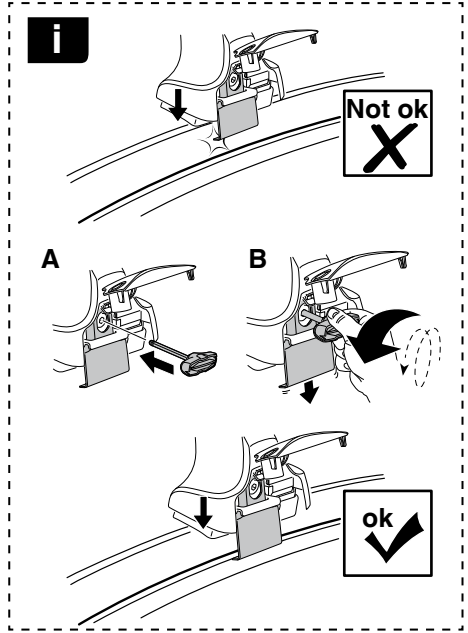
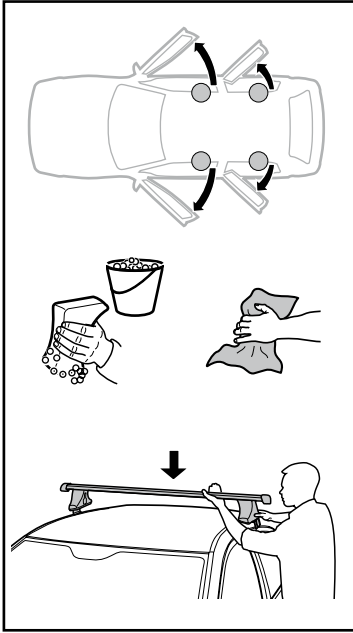
# 5

HONDA Pilot, 5-dr SUV, \*06-08, 09-

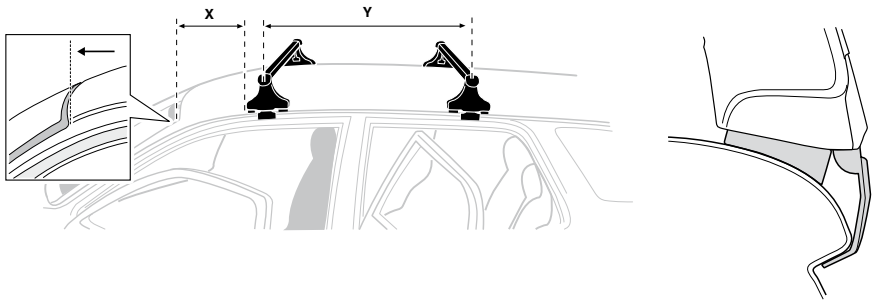
HONDA Ridgeline, 4-dr Quad Cab, \*06-08, 09-



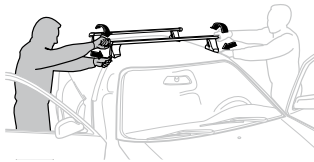
6



	X mm	Y mm	X inch	Y inch
HONDA Pilot, 5-dr SUV, *06-08, 09-	260 mm	750 mm	10 1/4"	29 1/2"
HONDA Ridgeline, 4-dr Quad Cab, *06-08, 09-	260 mm	750 mm	10 1/4"	29 1/2"



7



GB/US Tighten alternately  
 D Die Schrauben abwechselnd anziehen  
 F Serrer alternativement chaque côté  
 NL Afwisselend aan de linker- en de rechterkant aandraaien  
 I Alternare il serraggio delle viti  
 E Apretar alternativamente  
 PT Aperte alternadamente  
 S Dra åt växelvis  
 FIN Kierrä vuorotellen  
 EST Pinguldage vaheldumisi  
 LAT Pievelciēt pamišus  
 LIT Užsukinėkite pakaitomis  
 PL Śruby dokręcaj naprzemiennie  
 RU Затягивайте попеременно

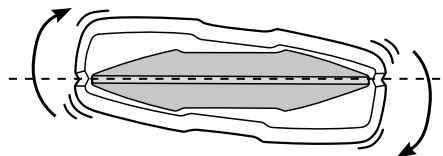
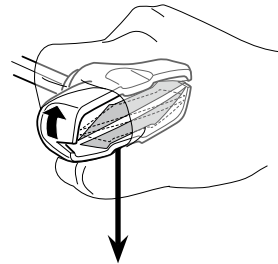
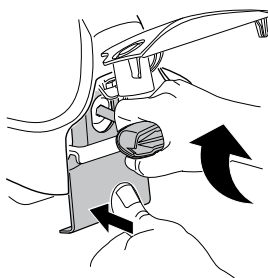
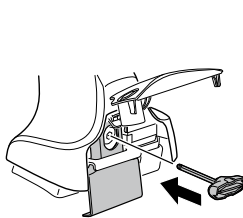
CZ Pokręťta bagazníka dokręcaj dokręcaj naprzemiennie.  
 SK Doťahujte striedavo  
 SLO Privijajte izmenično.  
 HR Naizmenično zategnite  
 HU Egymástól függetlenül szorítandó  
 GR Σφιγγεται εναλλάξ  
 TR Dönüşümlü sıkın

中文 交替拧紧

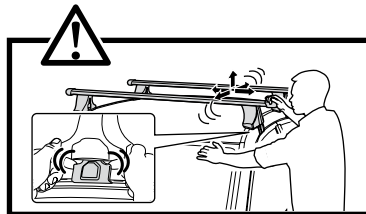
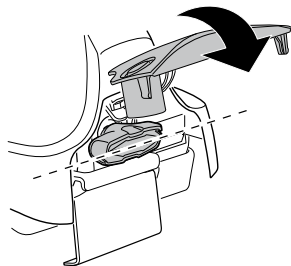
한국어 번갈아 가며 조이십시오.

日本語 交互に締め付けてください。

ไทย ชั้้นในแบบสลับ



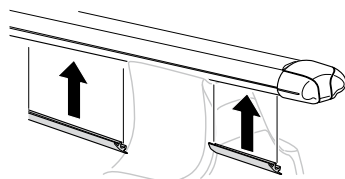
≈ 3 Nm

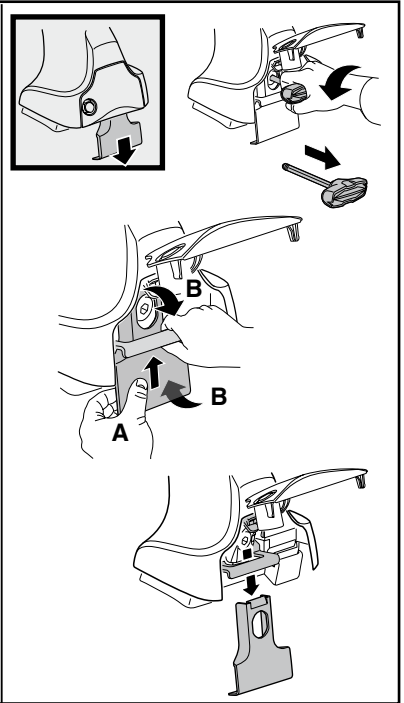
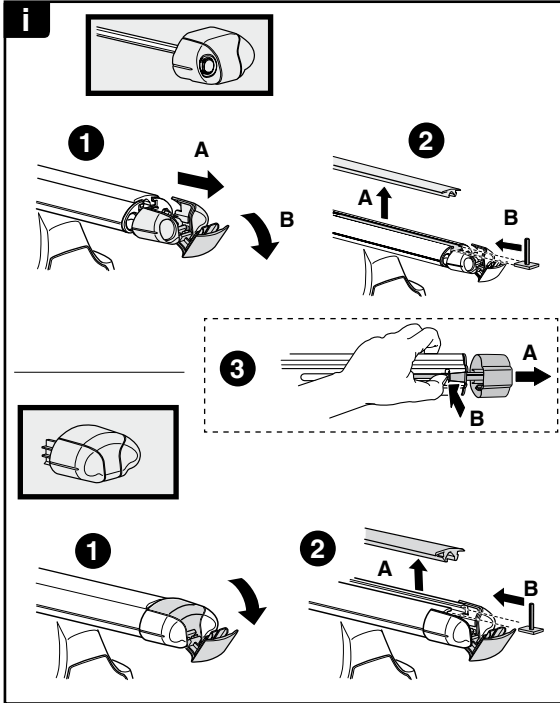
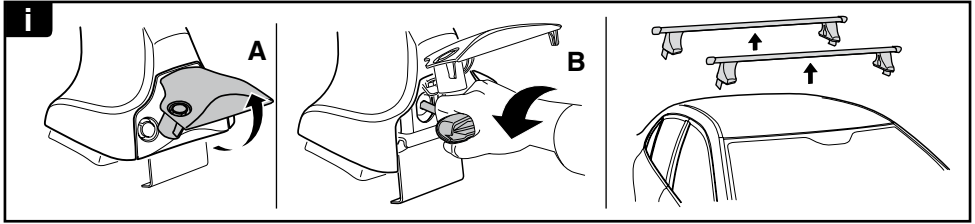


8

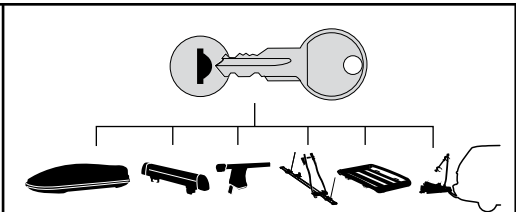


x1  
17 mm

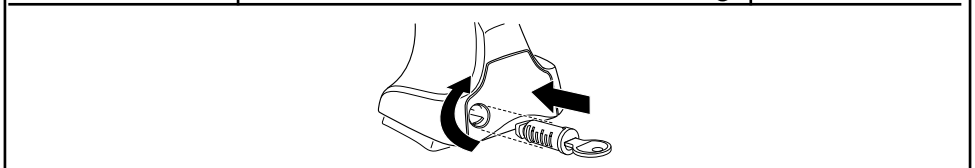




**THULE**  
SWEDEN  
**ONE  
KEY  
SYSTEM**



		(x4)
		(x6)
		(x8)
NA		(x10)
EUR		(x12)
ASIA		



WW ▶ Thule Sweden AB, Box 69, 330 33 Hillerstorp, SWEDEN  
NA ▶ Thule Inc., 42 Silvermine Road, Seymour, Connecticut 06483, USA

info@thule.com  
customer.service@thule.com

www.thule.com