

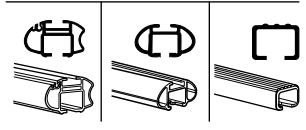
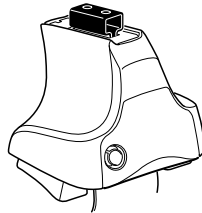
# Kit 1366

MINI Cooper (Mk.I), 3-dr Hatchback, 01-06 / \*03-07

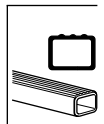
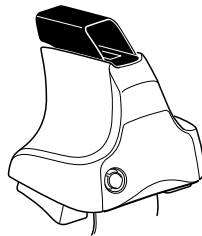
MINI Cooper (Mk.II), 3-dr Hatchback, 07- / \*08-

\*North America

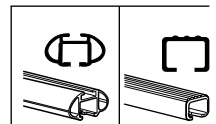
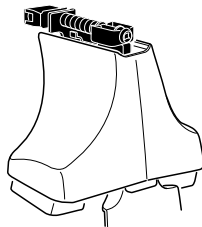
480R  
754



480



750



**Max. 50 kg**  
**Max. 110 lbs**

80 km/h 50 Mph    130 km/h 80 Mph  
 40 km/h 25 Mph  
**km/h Mph**

**THULE**  
**Kit XXXX**  
**instructions**  
**THULE**

**480R/754**  
 x1    x4    x4    x4

---

**480**  
 x1    x4    x4    x4

---

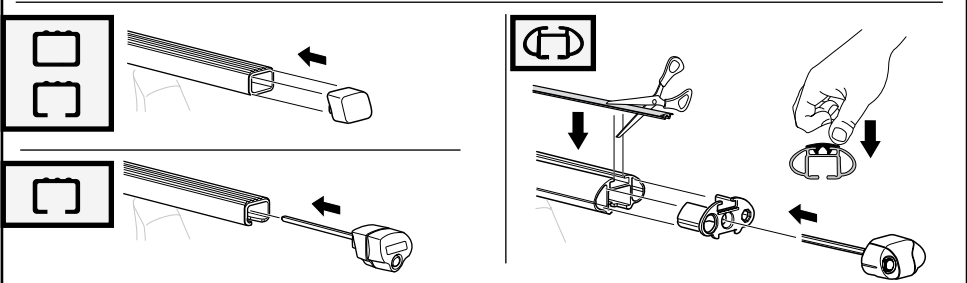
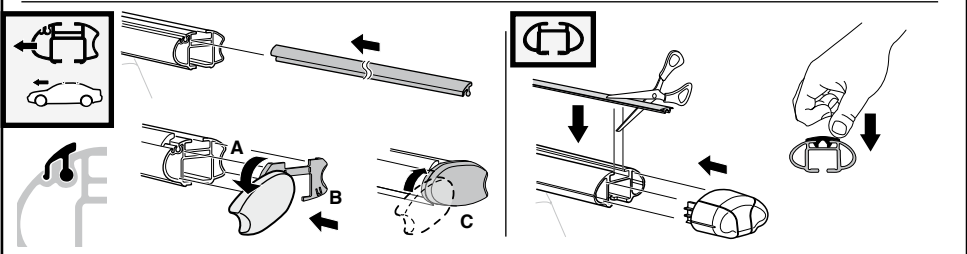
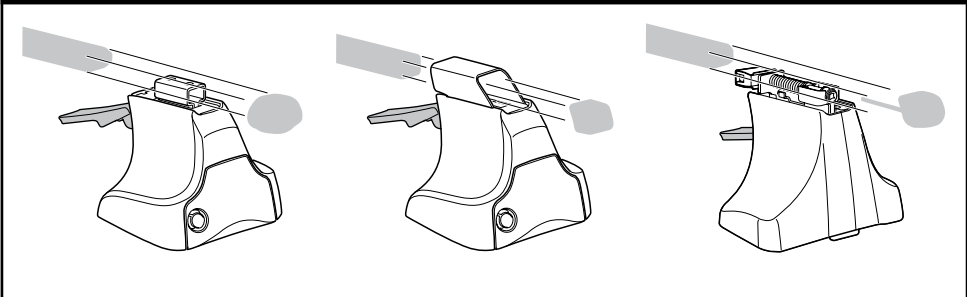
**750**  
 x1    x4    x4

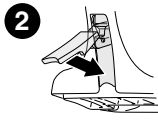
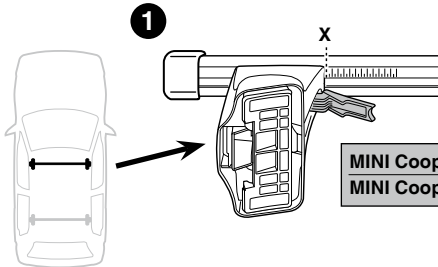
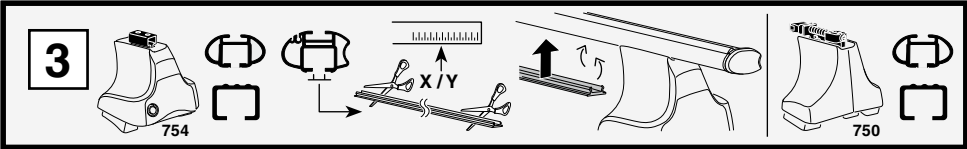
x2    x2    x2    x2    x2    x2  
 x2    x2    x2    x2    x2    x2  
 x2    x2    x2    x2    x2    x2  
 x4    x4    x4    x4    x4    x4

**659**    x4    **182**    x4    **50993**    x2

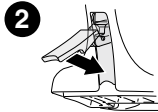
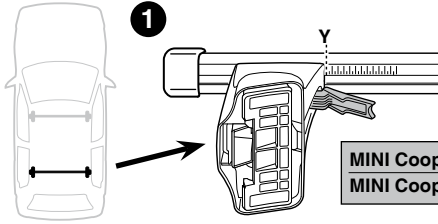
**x1**

**Kit**

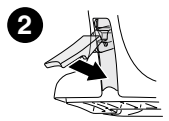
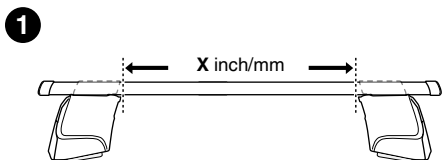
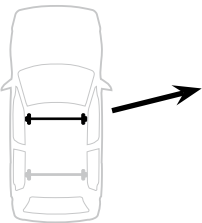
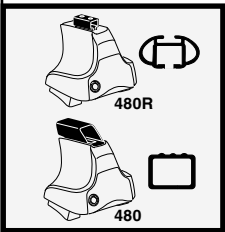




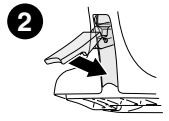
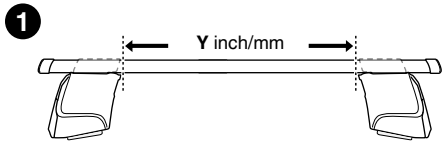
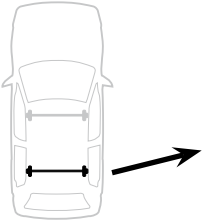
	X
<b>MINI Cooper (Mk.I), 3-dr Hatchback, 01-06 / *03-07</b>	<b>31</b>
<b>MINI Cooper (Mk.II), 3-dr Hatchback, 07- / *08-</b>	<b>28</b>



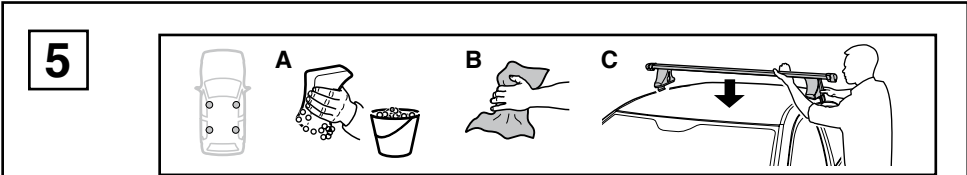
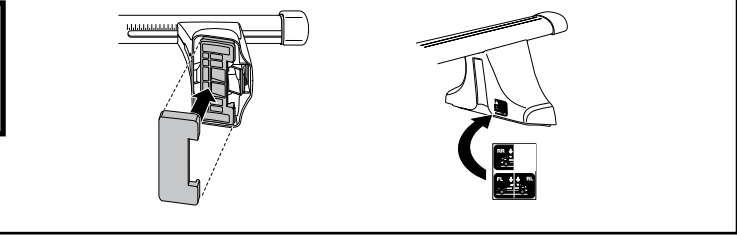
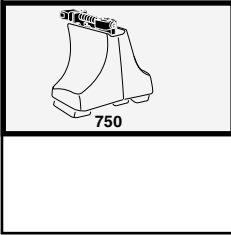
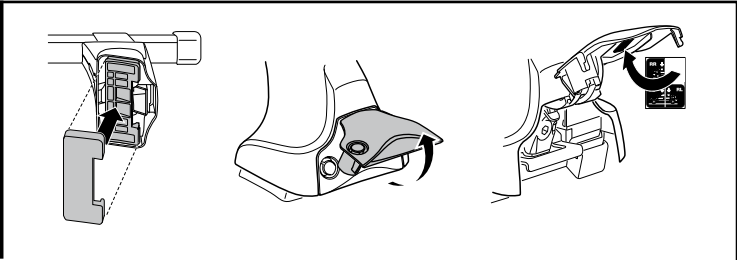
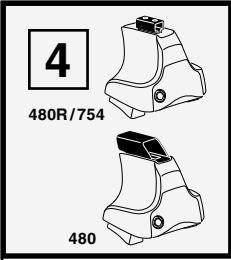
	Y
<b>MINI Cooper (Mk.I), 3-dr Hatchback, 01-06 / *03-07</b>	<b>32</b>
<b>MINI Cooper (Mk.II), 3-dr Hatchback, 07- / *08-</b>	<b>32</b>



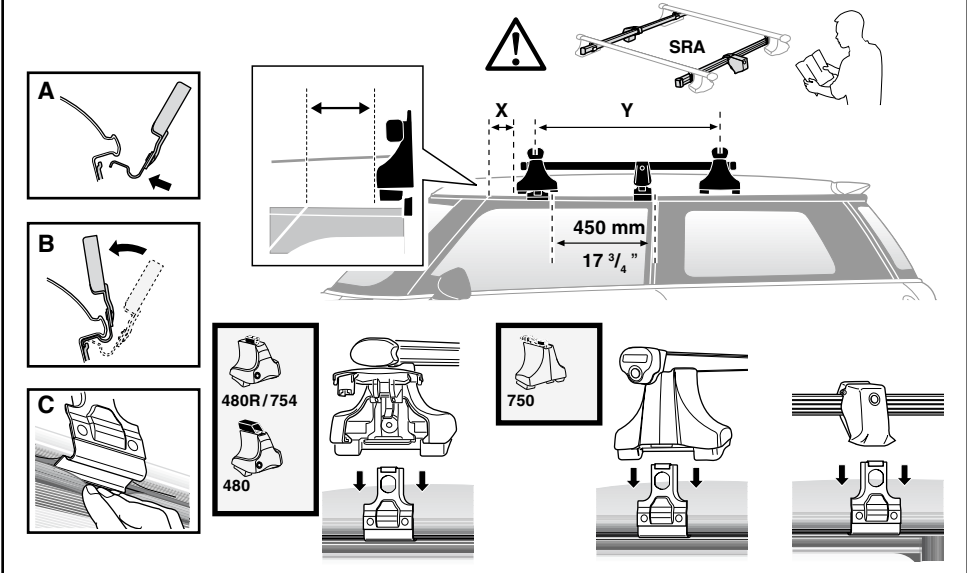
	X inch	X mm
<b>MINI Cooper (Mk.I), 3-dr Hatchback, 01-06 / *03-07</b>	<b>37 <sup>7</sup>/<sub>8</sub> "</b>	<b>961 mm</b>
<b>MINI Cooper (Mk.II), 3-dr Hatchback, 07- / *08-</b>	<b>36 <sup>5</sup>/<sub>8</sub> "</b>	<b>931 mm</b>



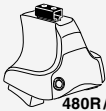
	Y inch	Y mm
<b>MINI Cooper (Mk.I), 3-dr Hatchback, 01-06 / *03-07</b>	<b>38 <sup>1</sup>/<sub>4</sub> "</b>	<b>971 mm</b>
<b>MINI Cooper (Mk.II), 3-dr Hatchback, 07- / *08-</b>	<b>38 <sup>1</sup>/<sub>4</sub> "</b>	<b>971 mm</b>



	X mm	Y mm	X inch	Y inch
MINI Cooper (Mk.I), 3-dr Hatchback, 01-06 / *03-07	110 mm	700 mm	4 <sup>3</sup> / <sub>8</sub> "	27 <sup>1</sup> / <sub>2</sub> "
MINI Cooper (Mk.II), 3-dr Hatchback, 07- / *08-	110 mm	700 mm	4 <sup>3</sup> / <sub>8</sub> "	27 <sup>1</sup> / <sub>2</sub> "



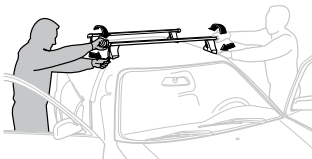
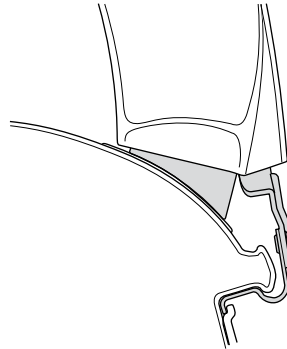
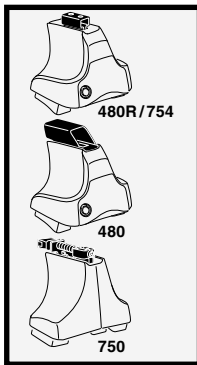
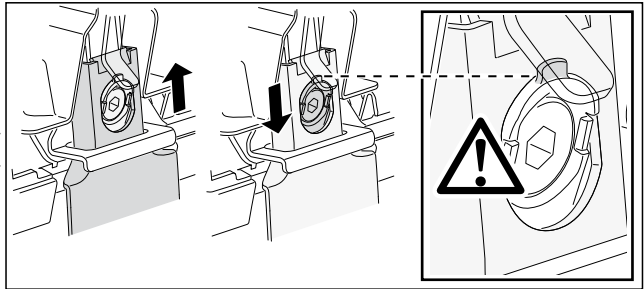
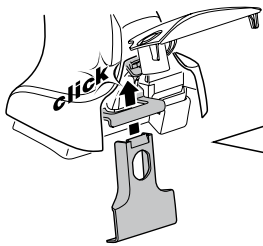
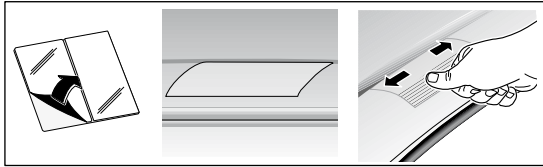
6



480R/754



480



GB/US

Tighten alternately

D Die Schrauben abwechselnd anziehen

F Serrer alternativement chaque côté

NL Afwisselend aan de linker- en de rechterkant aandraaien

I Alternare il serraggio delle viti

E Apretar alternativamente

PT Aperte alternadamente

S Dra åt växelvis

FIN Kierrä vuorotellen

EST Pinguldage vaheldumisi

LAT Pievelciet pamišus

LIT Užsukinėkite pakaitomis

PL Śruby dokręcaj naprzemiennie

RU Затягивайте попеременно

CZ

Pokrétla bagazníka dokręcaj dokręcaj naprzemiennie.

SK

Dofahujzte striedavo

SLO

Privijajte izmenično.

HR

Naizmjenično zategnite

HU

Egymástól függetlenül szorítandó

GR

Σφιγγετε εναλλάξ

TR

Dönüşümlü sıkın

中文

交替拧紧

한국어

번갈아 가며 조이십시오.

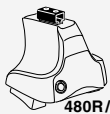
日本語

交互に締め付けてください。

ไทย

ขันในแบบสลับ

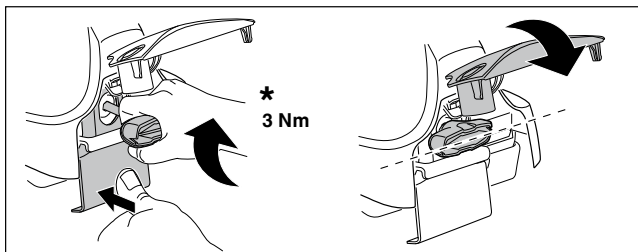
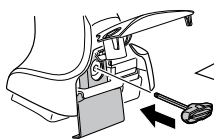
7



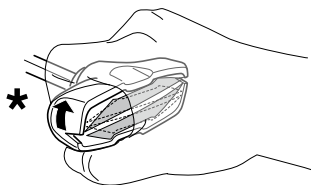
480R/754



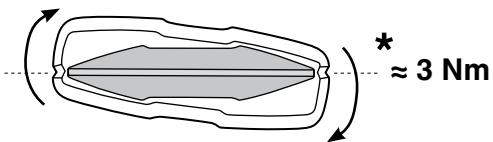
480



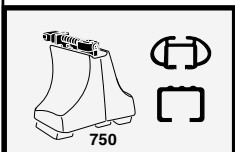
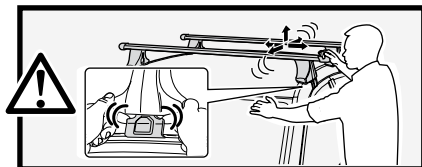
\*  
3 Nm



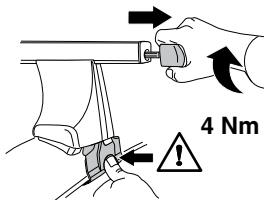
\*



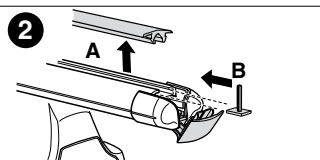
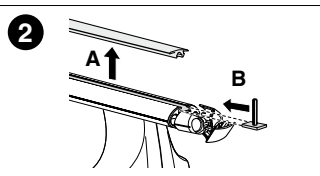
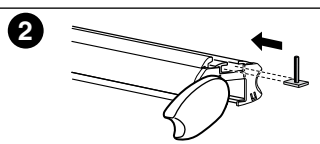
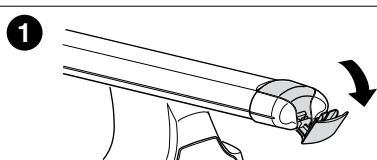
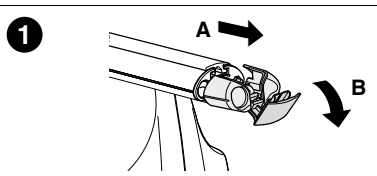
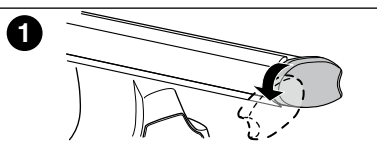
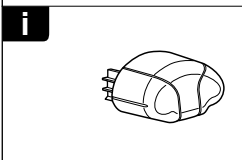
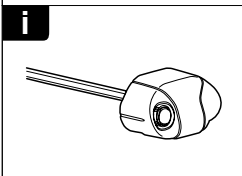
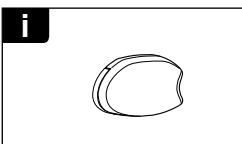
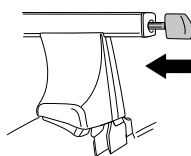
\*  
≈ 3 Nm

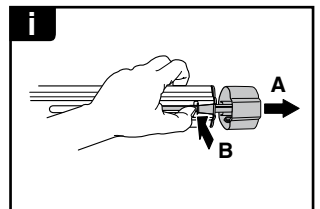
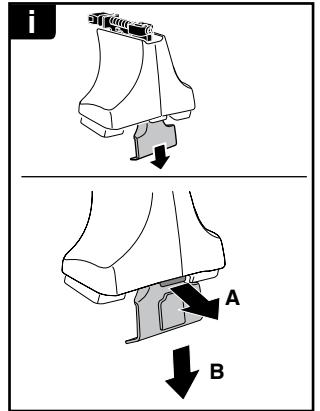
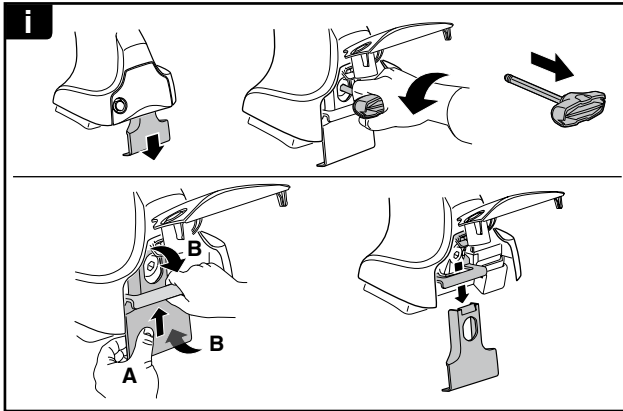
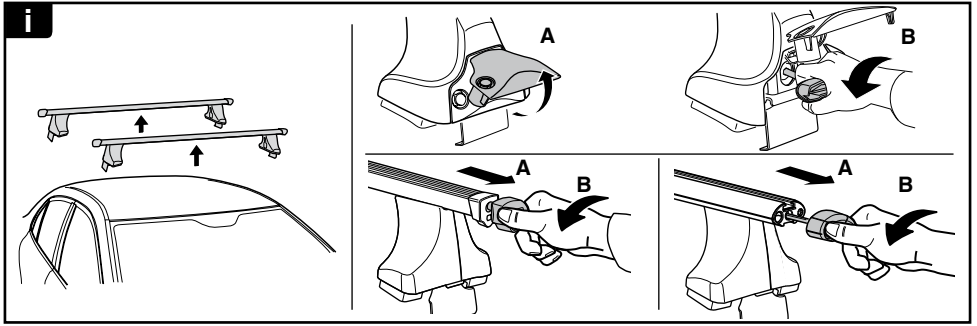


750

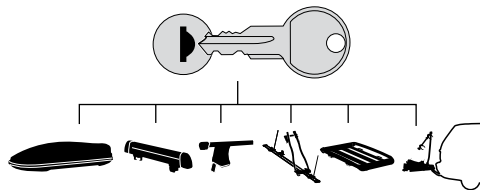


4 Nm

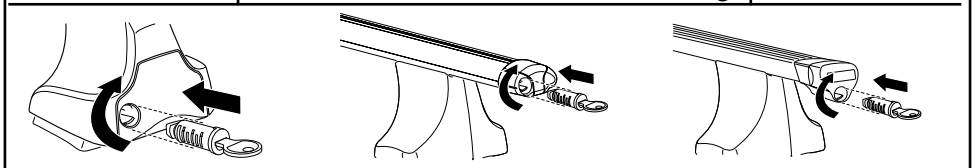




**THULE**  
SWEDEN  
**ONE  
KEY  
SYSTEM**



- 544 (x4)
- 596 (x6)
- 588 (x8)
- NA 510 (x10)
- EUR 452 (x12)
- ASIA



WW ▶ Thule Sweden AB, Box 69, 330 33 Hillerstorp, SWEDEN  
NA ▶ Thule Inc., 42 Silvermine Road, Seymour, Connecticut 06483, USA

info@thule.com  
customer.service@thule.com

www.thule.com

503-1366-04