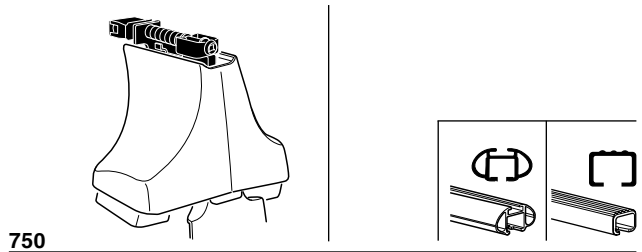
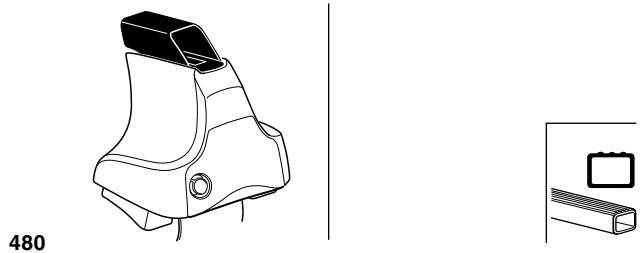
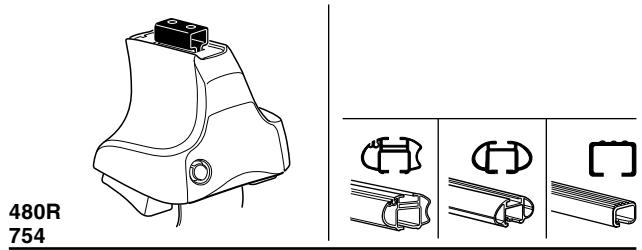


Kit 1224

TOYOTA Camry, 4-dr Sedan, *92-96

*North America



Max. 75kg
Max. 165 lbs

x1
 x4
 x4
 x4
 x4

480R/754

x1
 x4
 x4
 x4

480

x1
 x4
 x4

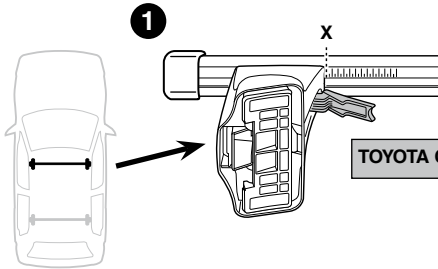
750

x2 x2 x2 x4	x2	x2 x2 x4 x4	x2 x2	x2
----------------------	----	----------------------	----------	----

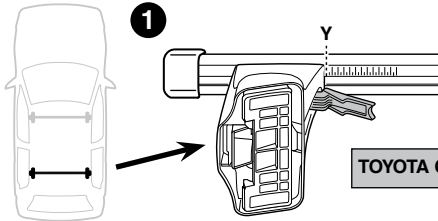
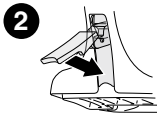
125 x4
 67 x4
 x1

Kit

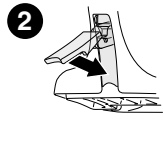
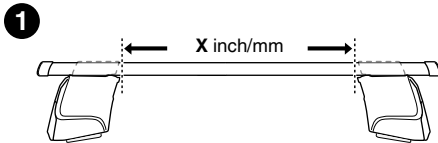
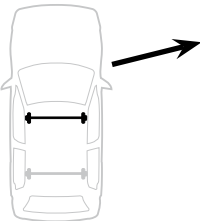
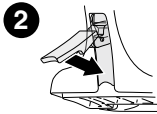




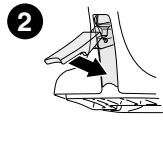
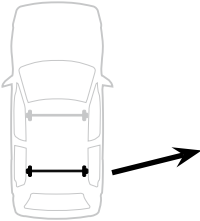
	X
TOYOTA Camry, 4-dr Sedan, *92-96	31,5



	Y
TOYOTA Camry, 4-dr Sedan, *92-96	30,5



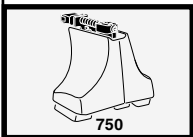
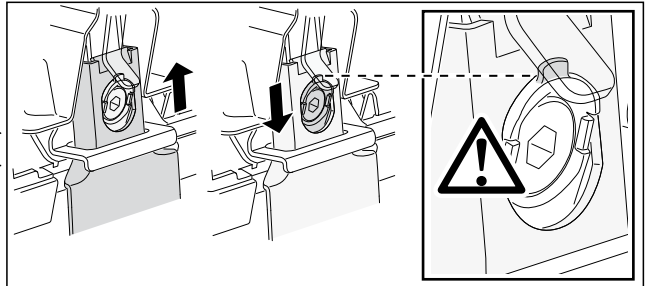
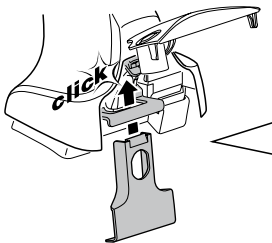
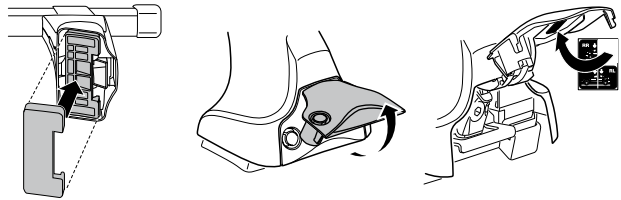
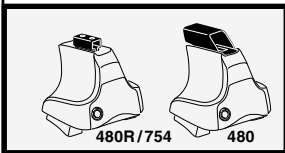
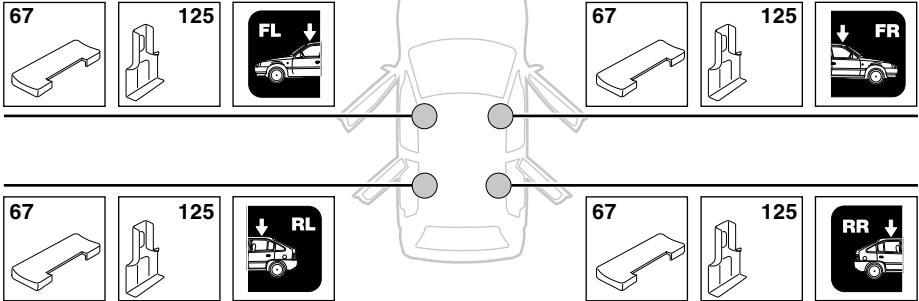
	X inch	X mm
TOYOTA Camry, 4-dr Sedan, *92-96	38 "	966 mm



	Y inch	Y mm
TOYOTA Camry, 4-dr Sedan, *92-96	37 ⁵ / ₈ "	956 mm

4

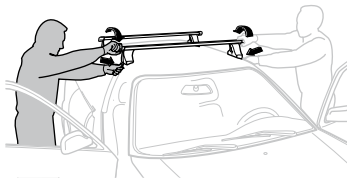
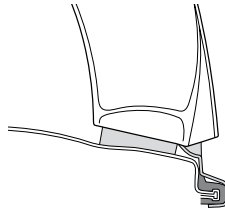
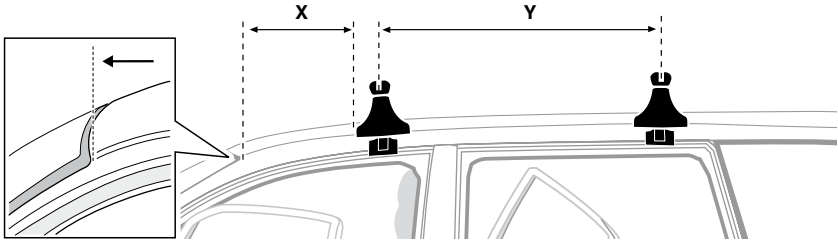
TOYOTA Camry, 4-dr Sedan, *92-96



5



	X mm	Y mm	X inch	Y inch
TOYOTA Camry, 4-dr Sedan, *92-96	190 mm	710 mm	7 1/2"	28"



GB/US Tighten alternately

D Die Schrauben abwechselnd anziehen

F Serrer alternativement chaque côté

NL Afwisselend aan de linker- en de rechterkant aandraaien

I Alternare il serraggio delle viti

E Apertar alternativamente

PT Aperte alternadamente

S Dra åt växelvis

FIN Kierrä vuorotellen

EST Pinguldage vaheldumisi

LAT Pielieciet pamišus

LIT Užsukinėkite pakaitomis

PL Śruby dokręcaj naprzemiennie

RU Затягивайте попеременно

CZ Pokręťta багаžníka dokręcaj dokręcaj naprzemiennie.

SK Doťahujte striedavo

SLO Privijajte izmenično.

HR Naizmjenično zategnite

HU Egymástól függetlenül szorítandó

GR Σφιγγετε εναλλάξ

TR Dönüşümlü sıkın

中文 交替拧紧

한국어 번갈아 가며 조이십시오.

日本語 交互に締め付けてください。

ไทย ชันโนแบบสลับ

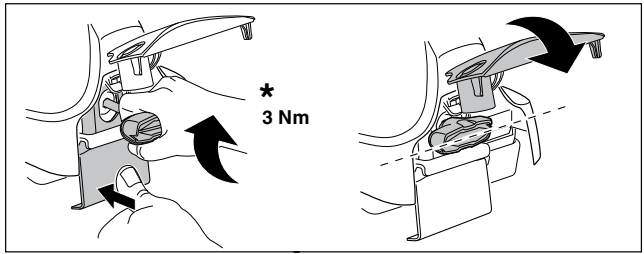
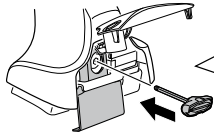
6



480R/754



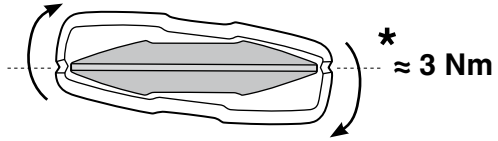
480



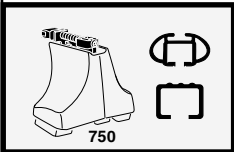
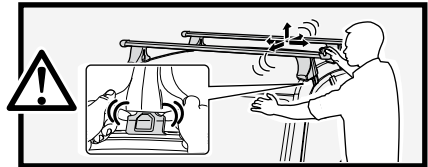
*
3 Nm



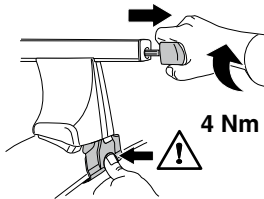
*



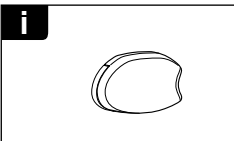
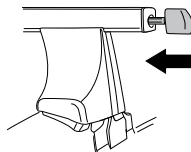
*
≈ 3 Nm



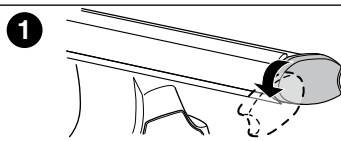
750



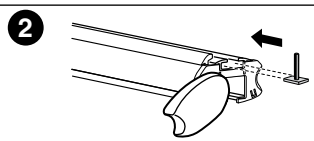
4 Nm



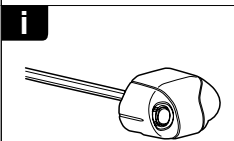
i



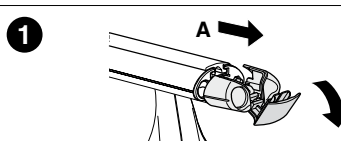
1



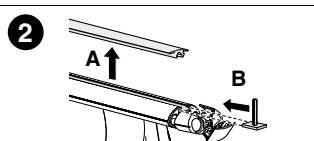
2



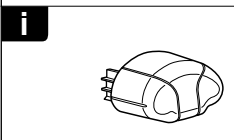
i



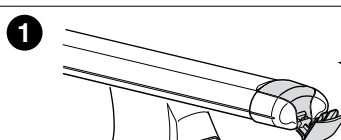
1



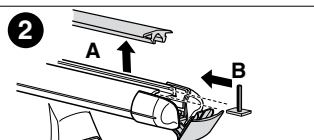
2



i



1



2



THULE
SWEDEN
**ONE
KEY
SYSTEM**



		544	(x4)
		596	(x6)
		588	(x8)
NA		510	(x10)
EUR		452	(x12)
ASIA			



ww ▶ Thule Sweden AB, Box 69, 330 33 Hillerstorp, SWEDEN
NA ▶ Thule Inc., 42 Silvermine Road, Seymour, Connecticut 06483, USA

info@thule.com
customer.service@thule.com

www.thule.com

503-1224-02