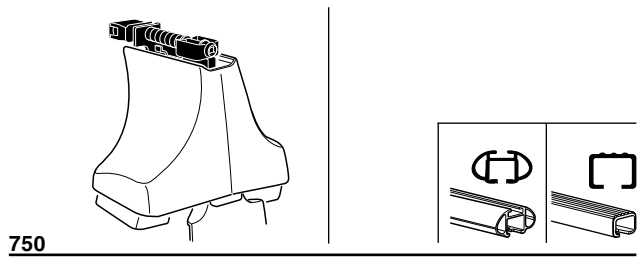
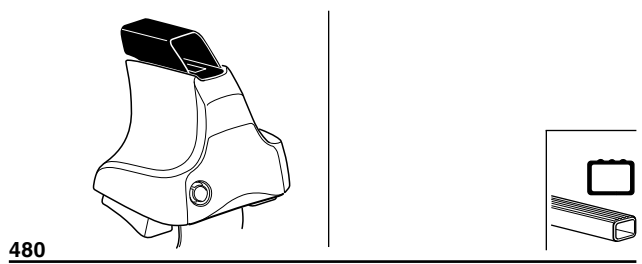
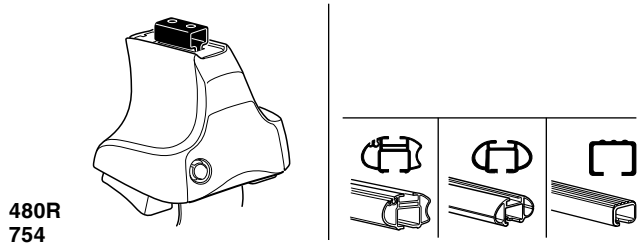


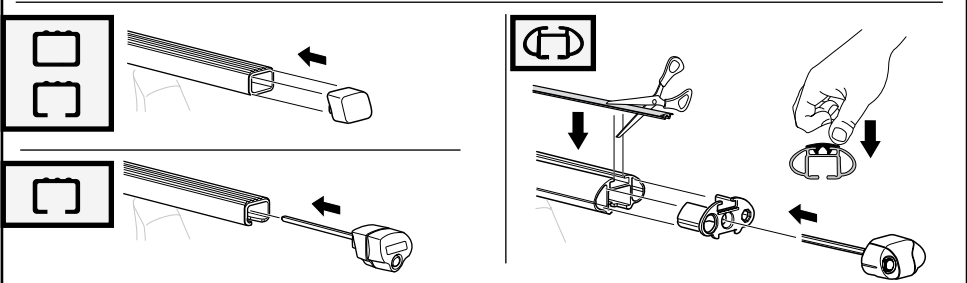
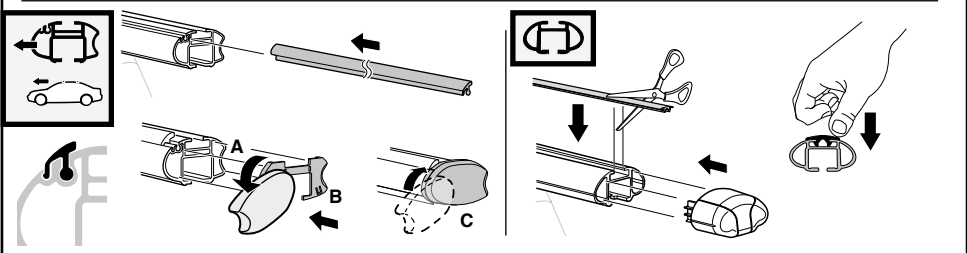
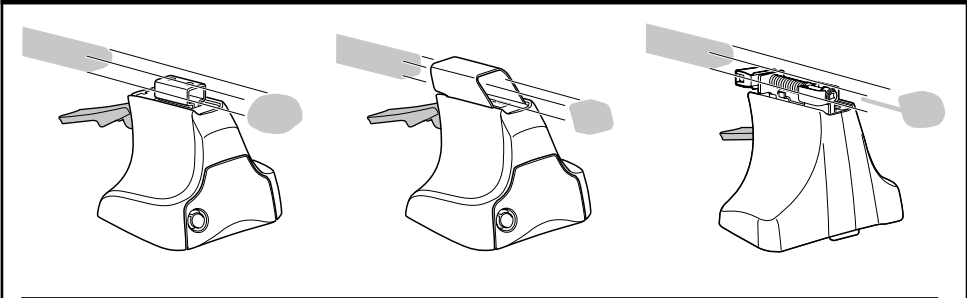
Kit 1191

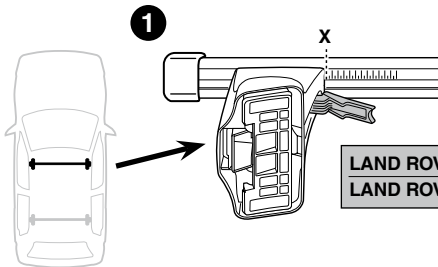
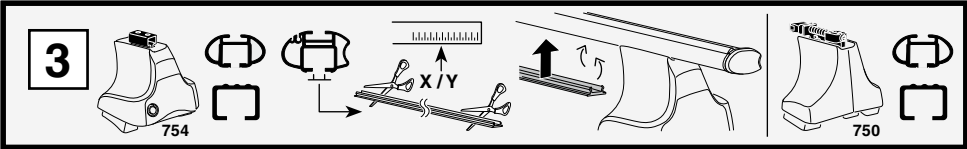
LAND ROVER Freelander, 3-dr SUV, 98-03
LAND ROVER Freelander, 5-dr SUV, 98-03 / *02-05

*North America

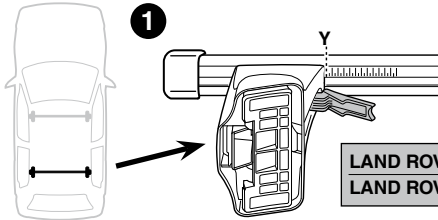
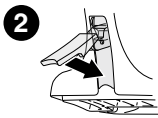


Kit

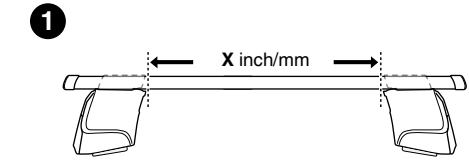
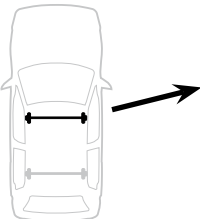
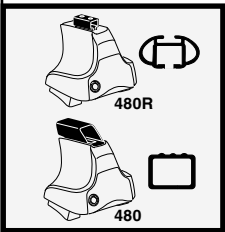
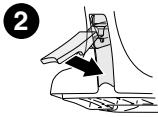




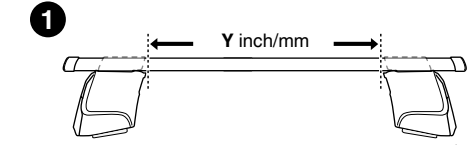
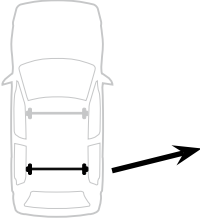
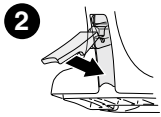
	X	
LAND ROVER Freelander, 3-dr SUV, 98-03	29	
LAND ROVER Freelander, 5-dr SUV, 98-03 / *02-05	29	



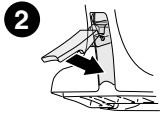
	Y	
LAND ROVER Freelander, 3-dr SUV, 98-03	27	
LAND ROVER Freelander, 5-dr SUV, 98-03 / *02-05	27	

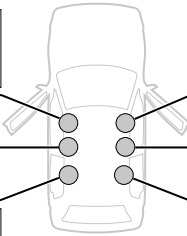
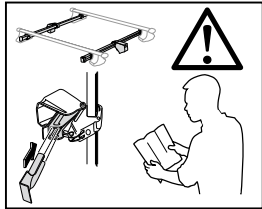
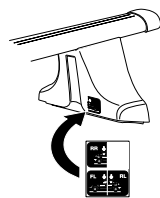
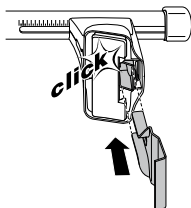
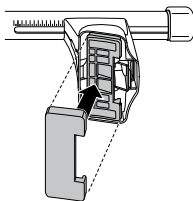
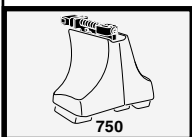
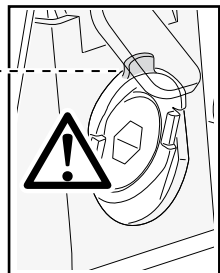
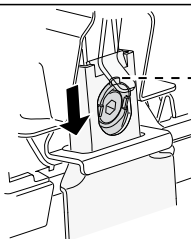
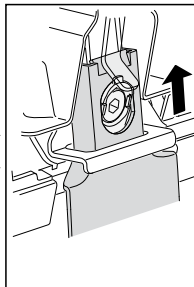
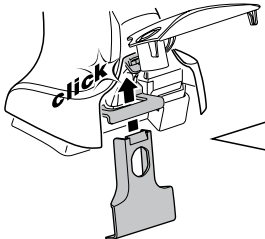
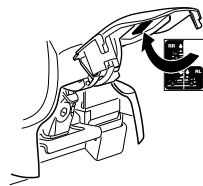
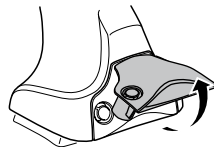
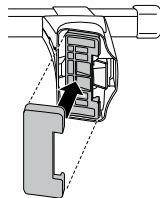
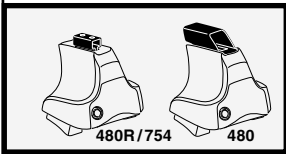
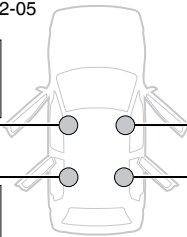


	X inch	X mm
LAND ROVER Freelander, 3-dr SUV, 98-03	37"	941 mm
LAND ROVER Freelander, 5-dr SUV, 98-03 / *02-05	37"	941 mm

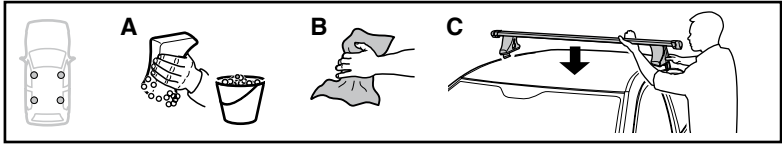


	Y inch	Y mm
LAND ROVER Freelander, 3-dr SUV, 98-03	36 1/4"	921 mm
LAND ROVER Freelander, 5-dr SUV, 98-03 / *02-05	36 1/4"	921 mm

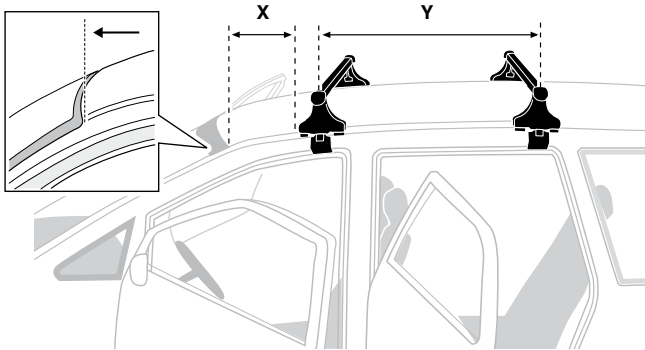


4**LAND ROVER Freelander, 3-dr SUV, 98-03****SRA****LAND ROVER Freelander, 5-dr SUV, 98-03 / *02-05**

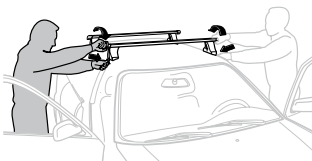
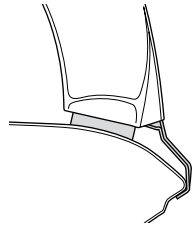
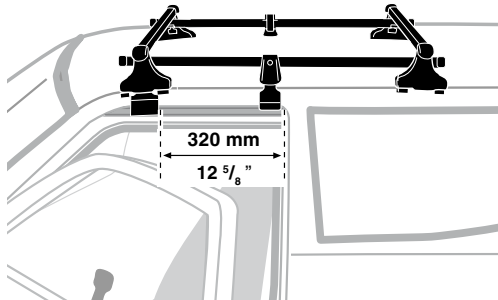
5



	X mm	Y mm	X inch	Y inch
LAND ROVER Freelander, 3-dr SUV, 98-03	200 mm	700 mm	7 ⁷ / ₈ "	27 ¹ / ₂ "
LAND ROVER Freelander, 5-dr SUV, 98-03 / *02-05	260 mm	640 mm	10 ¹ / ₄ "	25 ¹ / ₄ "



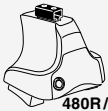
LAND ROVER Freelander, 3-dr SUV, 98-03



- GB/US** Tighten alternately
D Die Schrauben abwechselnd anziehen
F Serrer alternativement chaque côté
NL Afwisselend aan de linker- en de rechterkant aandraaien
I Alternare il serraggio delle viti
E Apretar alternativamente
PT Aperte alternadamente
S Dra åt växelvis
FIN Kierrä vuorotellen
EST Pinguldage vaheldumisi
LAT Pievelciēt pamīšus
LIT Užsukinėkite pakaitomis
PL Śruby dokręcaj naprzemiennie
RU Затягивайте попеременно

- CZ** Pokrétla bagażnika dokręcaj dokręcaj naprzemiennie.
SK Dotahujte striedavo
SLO Privijajte izmenično.
HR Naizmjenično zategnite
HU Egymástól függetlenül szorítandó
GR Σφιγγετε εναλλάξ
TR Dönüşümlü sıkın
中文 交替拧紧
한국어 번갈아 가며 조이십시오.
日本語 交互に締め付けてください。
ไทย ขันในแบบสลับ

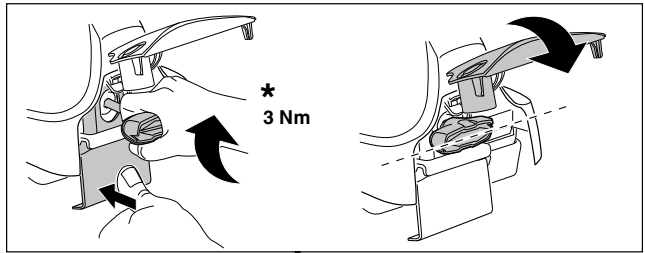
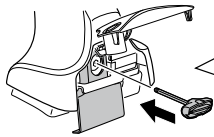
6



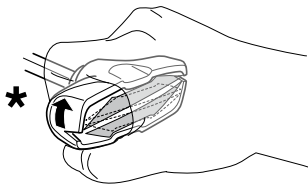
480R/754



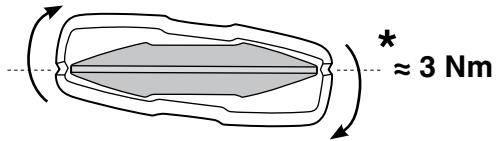
480



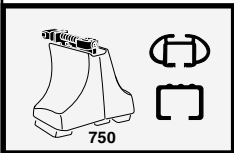
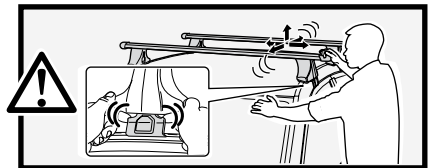
*
3 Nm



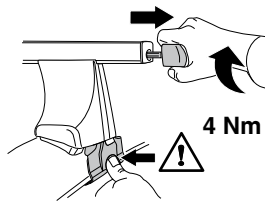
*



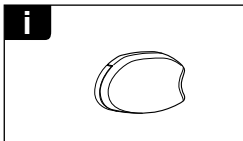
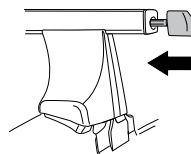
*
≈ 3 Nm



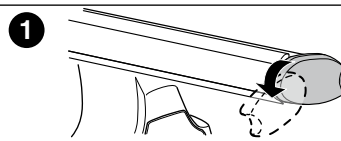
750



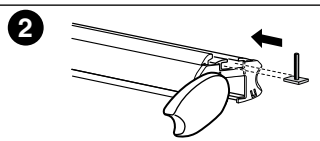
4 Nm



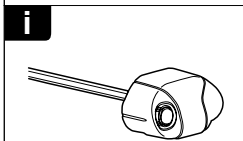
i



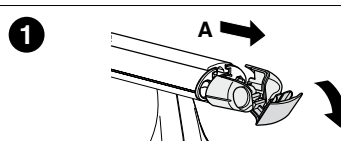
1



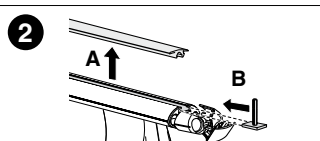
2



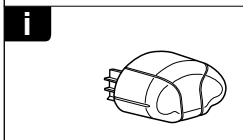
i



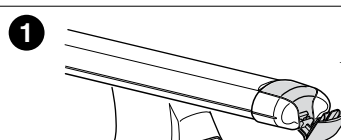
1



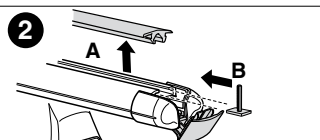
2



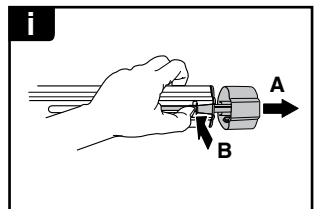
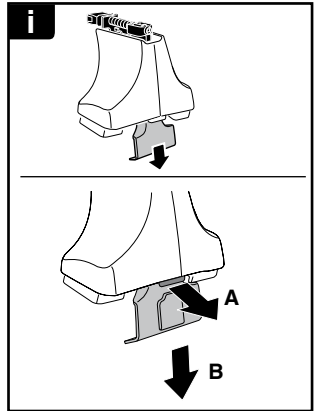
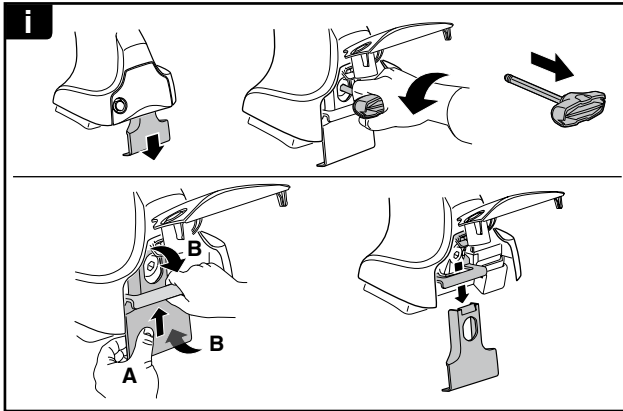
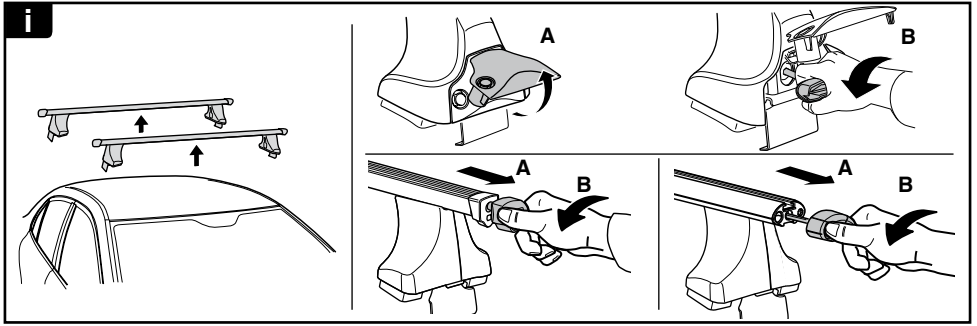
i



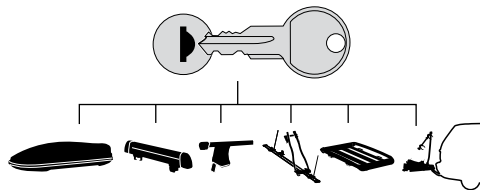
1



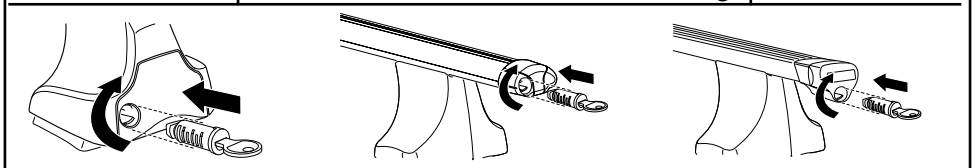
2



THULE
SWEDEN
**ONE
KEY
SYSTEM**



		(x4)
		(x6)
		(x8)
NA		(x10)
EUR		(x12)
ASIA		



WW ▶ Thule Sweden AB, Box 69, 330 33 Hillerstorp, SWEDEN
NA ▶ Thule Inc., 42 Silvermine Road, Seymour, Connecticut 06483, USA

info@thule.com
customer.service@thule.com

www.thule.com

503-1191-02